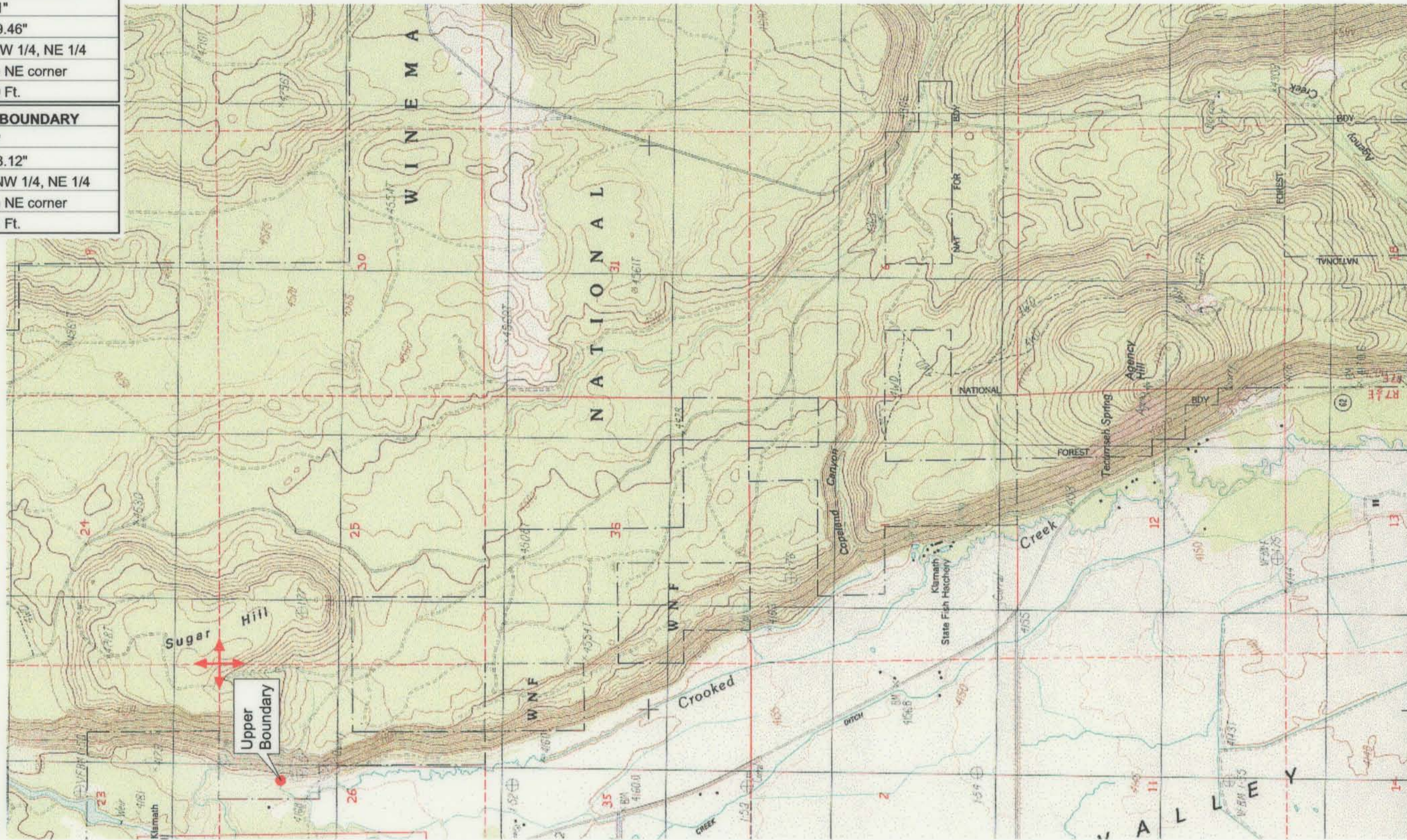


UPPER REACH BOUNDARY
Latitude: 42° 41' 12.01"
Longitude: 121° 57' 49.46"
T 33S, R 7.5E, S 26, NW 1/4, NE 1/4
Bearing/Distance: From NE corner S 59° 38' 53" W, 2,564.0 Ft.
LOWER REACH BOUNDARY
Latitude: 42° 36' 1.06"
Longitude: 121° 56' 18.12"
T 34S, R 7.5E, S 25, NW 1/4, NE 1/4
Bearing/Distance: From NE corner S 89° 13' 50" W, 1,567.1 Ft.



Source: USGS 7.5 Minute Quad: Fort Klamath, Agency Lake.

Vertical Datum: National Geodetic Vertical Datum of 1929.
Horizontal Datum: 1927 North American Datum.

KLAMATH ADJUDICATION
CLAIM # 669 PAGE # 018

Reach: Crooked Creek.
Plate 1 of 2.

RECEIVED
OCT 01 1999
 WATER RESOURCES DEPT.
 SALEM, OREGON

Klamath Basin Water Rights Claim #669
 Department of the Interior Bureau of Indian Affairs
 Reach Name: **Wood River #3 (WD 3)**
 Scale: 1:24,000 (Amended)

\\Lafayette\Graphics\Projects\GIS\BIA\60177.26\Topo\1117gis1.fh8