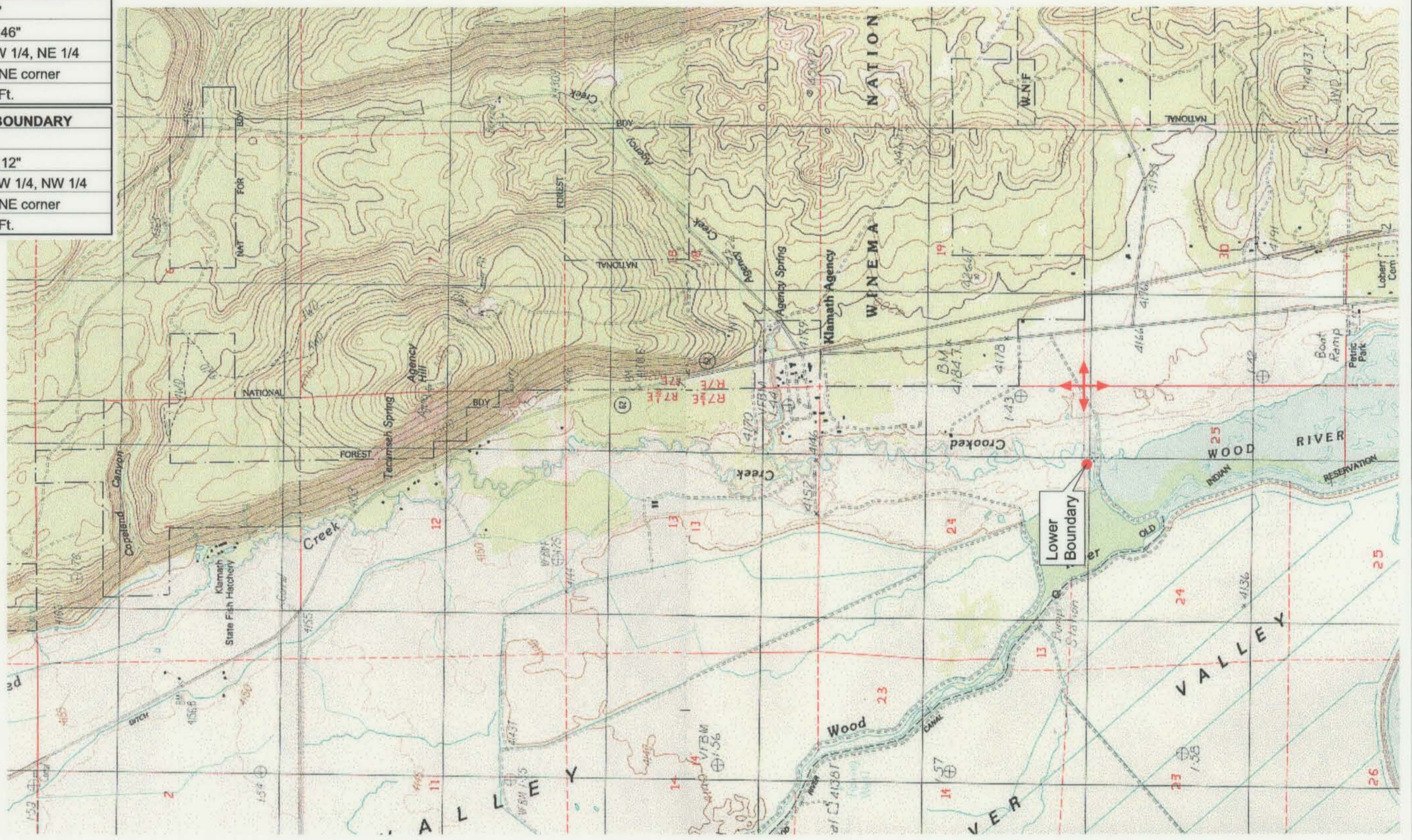


UPPER REACH BOUNDARY	
Latitude:	42° 41' 12.01"
Longitude:	121° 57' 49.46"
T 33S, R 7.5E, S 26, NW 1/4, NE 1/4	
Bearing/Distance: From NE corner S 59°38'53" W, 2,564.0 Ft.	
LOWER REACH BOUNDARY	
Latitude:	42° 36' 1.06"
Longitude:	121° 56' 18.12"
T 34S, R 7.5E, S 25, NW 1/4, NW 1/4	
Bearing/Distance: From NE corner S 89°13'50" W, 1,567.1 Ft.	



Source: USGS 7.5 Minute Quad: Fort Klamath, Agency Lake.

Vertical Datum: National Geodetic Vertical Datum of 1929.
Horizontal Datum: 1927 North American Datum.

KLAMATH ADJUDICATION
CLAIM # 669 PAGE # 019

Reach: Crooked Creek.
Plate 2 of 2.

RECEIVED

OCT 01 1999

WATER RESOURCES DEPT.
SALEM, OREGON

Klamath Basin Water Rights Claim #669
 Department of the Interior Bureau of Indian Affairs
 Reach Name: **Wood River #3 (WD 3)**
 Scale: 1:24,000 (Amended)

\\Lafayette\Graphics\Projects\GIS\BIA\60177.26\Topo\1117\gis1.fh8