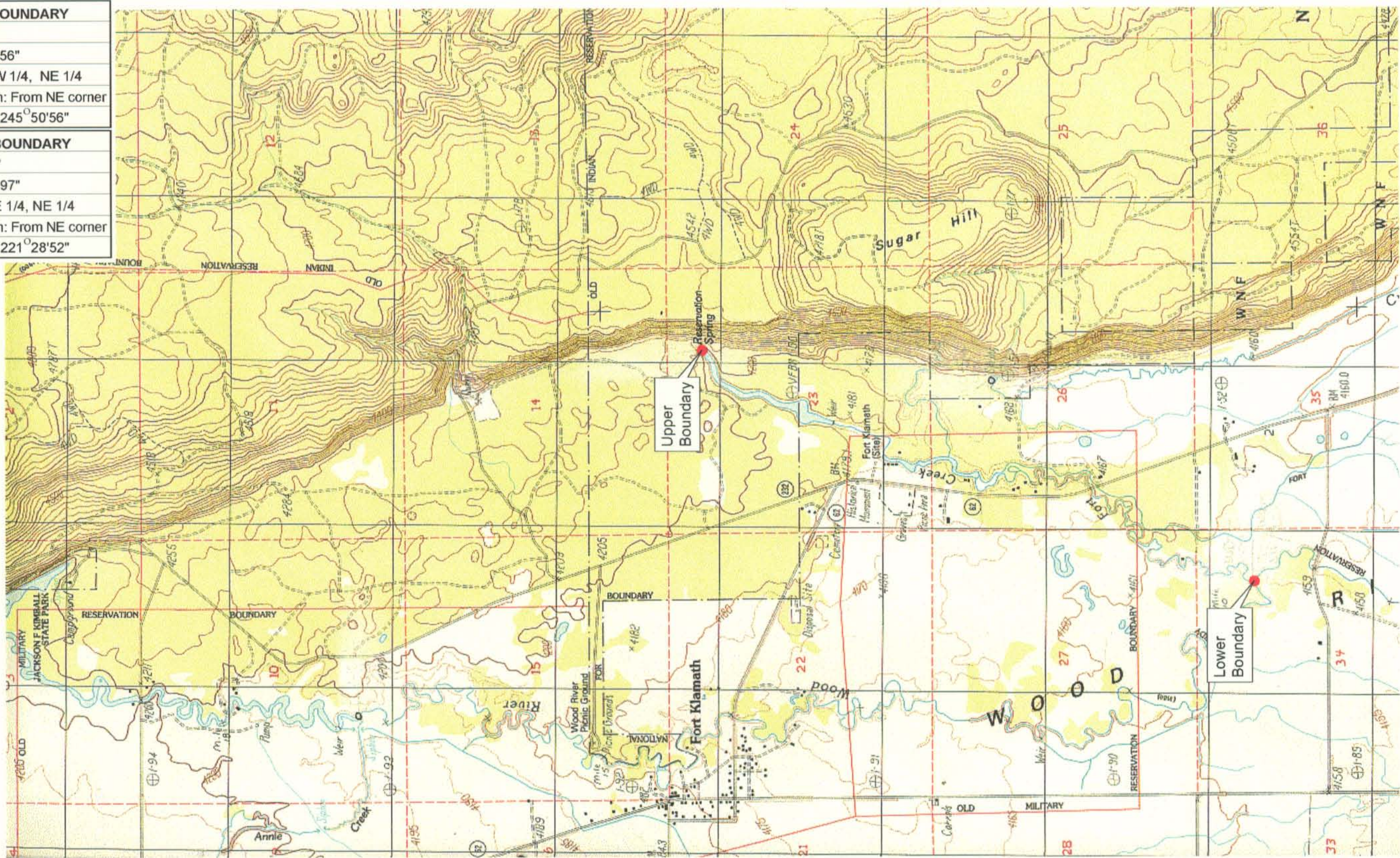


UPPER REACH BOUNDARY
Latitude: 42° 42' 9.38"
Longitude: 121° 57' 40.56"
T 33S, R 7.5E, S 23, NW 1/4, NE 1/4
Distance/Bearing/Azimuth: From NE corner S 65° 50' 56" W, 536.3m, 245° 50' 56"
LOWER REACH BOUNDARY
Latitude: 42° 40' 20.41"
Longitude: 121° 58' 42.97"
T 33S, R 7.5E, S 34, NE 1/4, NE 1/4
Distance/Bearing/Azimuth: From NE corner S 41° 28' 52" W, 481.2m, 221° 28' 52"



RECEIVED
MAR 01 1999
WATER RESOURCES DEPT
SALEM, OREGON

Source: USGS 7.5 Minute
Quad: Fort Klamath.
Vertical Datum: National
Geodetic Vertical Datum of
1929.
Horizontal Datum: 1927 North
American Datum.

KLAMATH ADJUDICATION
CLAIM 670 PAGE # 04

Reach: Fort Creek.
Plate 1 of 1.

Klamath Basin Water Rights Claim Map
Department of the Interior Bureau of Indian Affairs
Reach Name: **Wood River #4**
Scale: 1:24,000