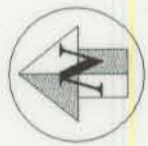
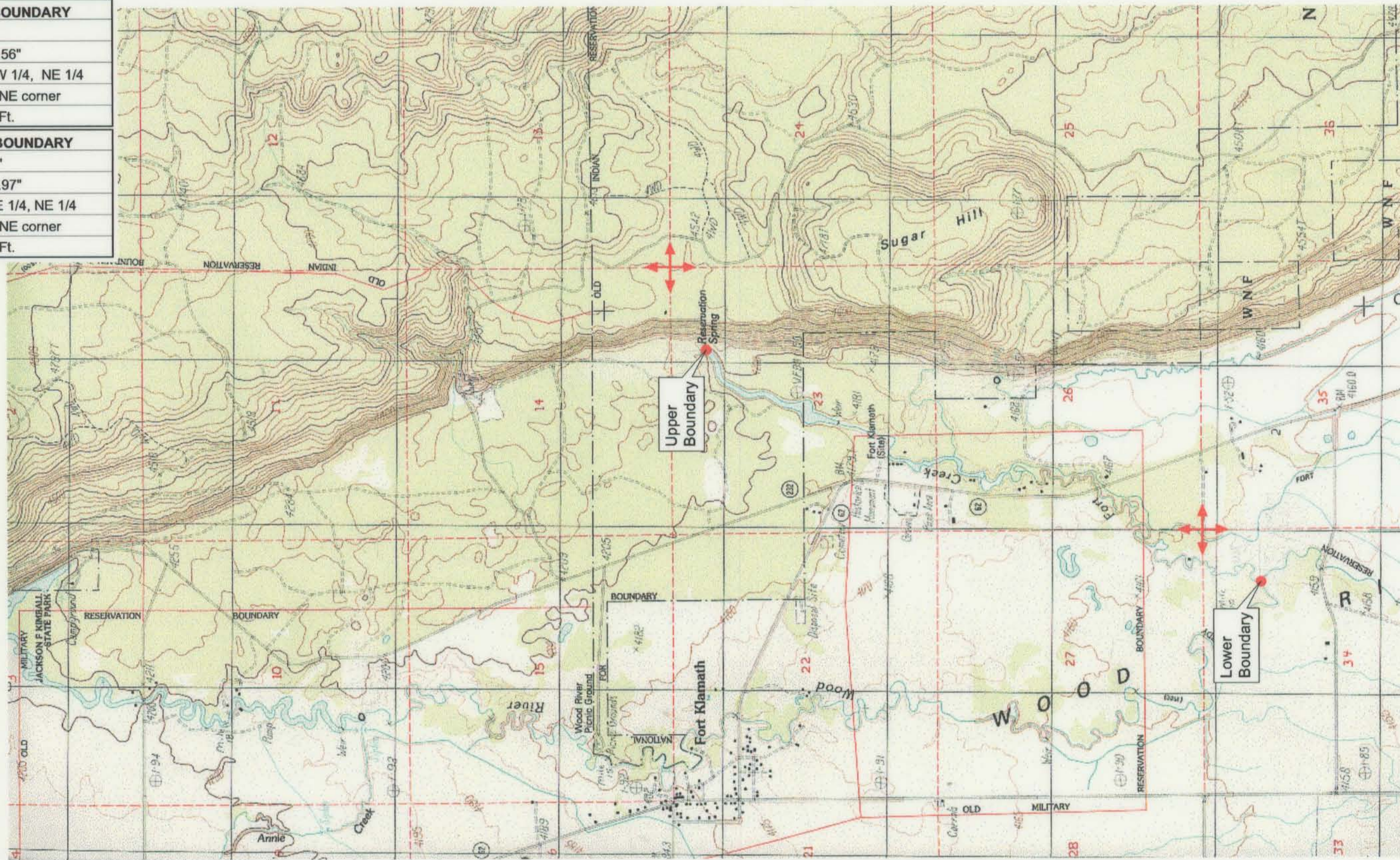


UPPER REACH BOUNDARY
Latitude: 42° 42' 9.38"
Longitude: 121° 57' 40.56"
T 33S, R 7.5E, S 23, NW 1/4, NE 1/4
Bearing/Distance: From NE corner S 65° 50' 56" W, 1,759.5 Ft.
LOWER REACH BOUNDARY
Latitude: 42° 40' 20.41"
Longitude: 121° 58' 42.97"
T 33S, R 7.5E, S 34, NE 1/4, NE 1/4
Bearing/Distance: From NE corner S 41° 28' 52" W, 1,578.7 Ft.



Source: USGS 7.5 Minute Quad: Fort Klamath.

Vertical Datum: National Geodetic Vertical Datum of 1929.

Horizontal Datum: 1927 North American Datum.

KLAMATH ADJUDICATION
CLAIM # 670 PAGE # 016

Reach: Fort Creek.
 Plate 1 of 1.

RECEIVED

OCT 01 1999

WATER RESOURCES DEPT.
 SALEM, OREGON

Klamath Basin Water Rights Claim #670

Department of the Interior Bureau of Indian Affairs

Reach Name: **Wood River #4 (WD 4)**

Scale: 1:24,000 (Amended)

\\Lafayette\Graphics\Projects\GIS\BIA\60177.26\Topo\1117gis1.fh8