

RECEIVED

FEB 14 2014

WATER RESOURCES DEPT
SALEM, OREGON



Date	Revision	By
2/14/14	TANK LOCATION AND IRRIGATED AREAS MAP	RWW

USKH
USKH WASHINGTON, IDAHO PROFESSIONAL ENGINEERS
ARCHITECTS ENGINEERS SURVEYORS
PLANNING ENVIRONMENTAL SERVICES

621 W. Mallon Ave.
Suite 208 WA 98201
(509) 326-5139
313 D Street
Lewiston, Idaho 83501
(208) 746-2881
5 North Coveille
Walla Walla, WA 99382
(509) 522-4843
1820 Main Street
Suite 14
Ferdinand, WA 98246
(509) 312-1815
www.uskh.com

Project: Love's Travel Stop and Country Store Boardman, OR



Project Mgr.	AEG
Drawn	ZCS ALB
Checked	ZCS AEG
Date	09/10/2013

WELL SITE PLAN

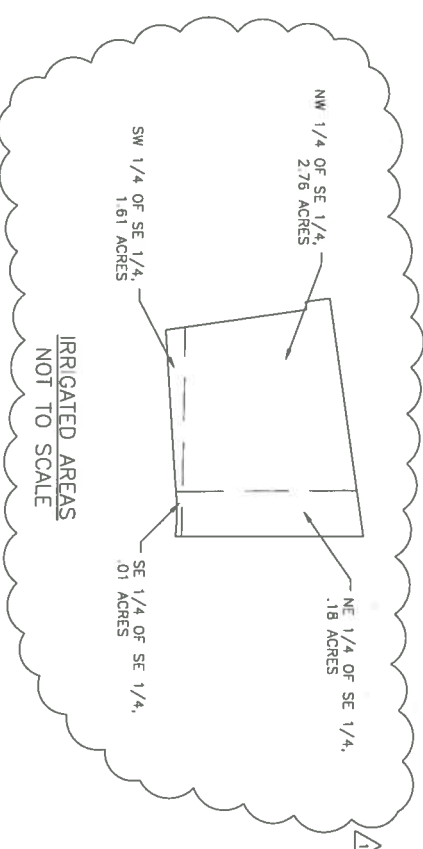
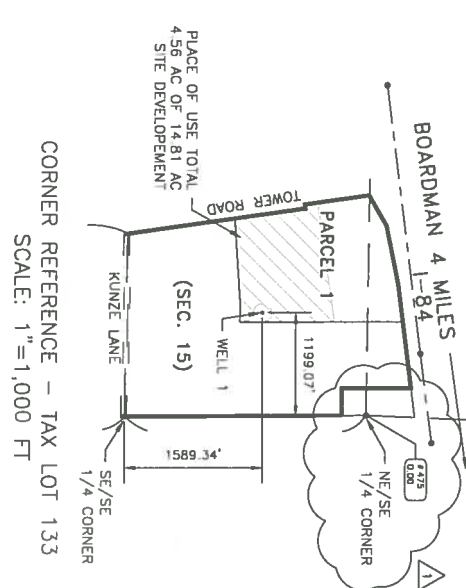
Sheet No.:

C6.3

USKH W.O. 1132100

WELL LOCATION:
14N, R24E, S15
NE 1/4 OF SE 1/4

WELL WATER POINTS OF USE:
14N, R24E, S15
NE 1/4 OF SE 1/4, NW 1/4 OF SE 1/4,
SW 1/4 OF SE 1/4, SE 1/4 OF SE 1/4



POINT #	NORTHING	EASTING	ELEVATION	DESCRIPTION
460	3718.27	6373.65		WELL
461	3745.99	6252.53	330.50	FG
462	3764.70	6384.21	329.50	FG
463	3665.70	6398.27	330.00	FG
464	3654.02	6316.09	329.50	FG
465	3646.99	6266.59	330.00	FG
466	3676.67	6282.37	330.20	FG
467	3692.51	6260.12	330.50	FG
468	3716.42	6256.73	330.99	FG
469	3713.52	6314.56	330.50	FG
470	3718.91	6363.94	331.00	BLDG
471	3720.53	6375.35	331.00	BLDG
472	3685.34	6380.35	331.00	BLDG
473	3683.72	6368.94	331.00	BLDG
474	3712.57	6333.53	0.00	TANK
475	4831.92	7511.37	0.00	1/4 CORNER

