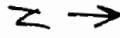


P-78218

83012



SEE MAP 40 9 24

1" = 400'

40-8-19

THIS SKETCH IS FOR LOCATION PURPOSES AND NO LIABILITY IS ASSUMED FOR INFORMATION DETERMINED BY SURVEY JOSEPHINE COUNTY TITLE 10.00 AC.

W 1/4 COR SEC 19

REDWOOD

1100  
56.90 AC.

HIGHWAY

REGISTRATION  
JAN 21 1997  
WATER RESOURCES  
GRANTS PASS, OR

NO. 199

4

1008  
4.71 AC.

17.13 AC.

ROAD

SEE

40 8 19-4

M.P.

1006  
5.82 AC.

1005  
3.75 AC.

1004  
7.66 AC.

801  
19.00 AC.

800  
70.00 AC.

CS 121-74

CS 192-79

90  
11.02 AC.

53.4  
N 88° 37' 12" W

1010' M/L  
N 83° 37' E

1000

35.61

1200  
16.30 AC.

601  
3.42 AC.

603  
6.36 AC.

605  
5.03 AC.

600  
5.03 AC.

602  
8.18 AC.

701  
0.33 AC.

702  
0.83 AC.

704  
0.83 AC.

700  
10.82 AC.

700  
10.82 AC.

703  
0.83 AC.

704  
0.83 AC.

500  
10.07 AC.

502  
5.33 AC.

506  
5.37 AC.

500  
10.07 AC.

503 AC.

503 AC.

501-PP  
501-PP  
1440' M/L

506  
5.37 AC.

LOT  
35.80

502  
5.33 AC.

350

1075.57'

150'

1360

352'

89° 22' E

LOT

N 85° 00' E

350

558.6

780' M/L

700' M/L

500

502

1440' M/L

150'

DITCH

35.61

1200

700

35.80

5.33 AC.

1440' M/L

REGISTRATION  
JAN 21 1997  
WATER RESOURCES  
GRANTS PASS, OR

NO. 199

4

1008  
4.71 AC.

17.13 AC.

ROAD

SEE

40 8 19-4

M.P.

1006  
5.82 AC.

1005  
3.75 AC.

1004  
7.66 AC.

801  
19.00 AC.

800  
70.00 AC.

CS 121-74

CS 192-79

90  
11.02 AC.

53.4  
N 88° 37' 12" W

1010' M/L  
N 83° 37' E

1000

35.61

1200  
16.30 AC.

601  
3.42 AC.

603  
6.36 AC.

605  
5.03 AC.

600  
5.03 AC.

602  
8.18 AC.

506  
5.37 AC.

701  
0.33 AC.

702  
0.83 AC.

704  
0.83 AC.

700  
10.82 AC.

700  
10.82 AC.

703  
0.83 AC.

704  
0.83 AC.

500  
10.07 AC.

502  
5.33 AC.

506  
5.37 AC.

LOT  
35.80

502  
5.33 AC.

350

1075.57'

150'

1360

352'

89° 22' E

LOT

N 85° 00' E

350

558.6

780' M/L

700' M/L

500

502

1440' M/L

150'

DITCH

35.61

1200

700

35.80

5.33 AC.

1440' M/L

REGISTRATION  
JAN 21 1997  
WATER RESOURCES  
GRANTS PASS, OR

NO. 199

4

1008  
4.71 AC.

17.13 AC.

ROAD

SEE

40 8 19-4

M.P.

1006  
5.82 AC.

1005  
3.75 AC.

1004  
7.66 AC.

801  
19.00 AC.

800  
70.00 AC.

CS 121-74

CS 192-79

90  
11.02 AC.

53.4  
N 88° 37' 12" W

1010' M/L  
N 83° 37' E

1000

35.61

1200  
16.30 AC.

601  
3.42 AC.

603  
6.36 AC.

605  
5.03 AC.

600  
5.03 AC.

602  
8.18 AC.

506  
5.37 AC.

701  
0.33 AC.

702  
0.83 AC.

704  
0.83 AC.

700  
10.82 AC.

700  
10.82 AC.

703  
0.83 AC.

704  
0.83 AC.

500  
10.07 AC.

502  
5.33 AC.

506  
5.37 AC.

LOT  
35.80

502  
5.33 AC.

350

1075.57'

150'

1360

352'

89° 22' E

LOT

N 85° 00' E

350

558.6

780' M/L

700' M/L

500

502

1440' M/L

150'

DITCH

35.61

1200

700

35.80

5.33 AC.

1440' M/L

REGISTRATION  
JAN 21 1997  
WATER RESOURCES  
GRANTS PASS, OR

NO. 199

4

1008  
4.71 AC.

17.13 AC.

ROAD

SEE

40 8 19-4

M.P.

1006  
5.82 AC.

1005  
3.75 AC.

1004  
7.66 AC.

801  
19.00 AC.

800  
70.00 AC.

CS 121-74

CS 192-79

90  
11.02 AC.

53.4  
N 88° 37' 12" W

1010' M/L  
N 83° 37' E

1000

35.61

1200  
16.30 AC.

601  
3.42 AC.

603  
6.36 AC.

605  
5.03 AC.

600  
5.03 AC.

602  
8.18 AC.

506  
5.37 AC.

701  
0.33 AC.

702  
0.83 AC.

704  
0.83 AC.

700  
10.82 AC.

700  
10.82 AC.

703  
0.83 AC.

704  
0.83 AC.

500  
10.07 AC.

502  
5.33 AC.

506  
5.37 AC.

LOT  
35.80

502  
5.33 AC.

350

1075.57'

150'

1360

352'

89° 22' E

LOT

N 85° 00' E

350

558.6

780' M/L

700' M/L

500

502

1440' M/L

150'

DITCH

35.61

1200

700

35.80

5.33 AC.

1440' M/L

REGISTRATION  
JAN 21 1997  
WATER RESOURCES  
GRANTS PASS, OR

NO. 199

4

1008  
4.71 AC.

17.13 AC.

ROAD

SEE

40 8 19-4

M.P.

1006  
5.82 AC.

1005  
3.75 AC.

1004  
7.66 AC.

801  
19.00 AC.

800  
70.00 AC.

CS 121-74

CS 192-79

90  
11.02 AC.

53.4  
N 88° 37' 12" W

1010' M/L  
N 83° 37' E

1000

35.61

1200  
16.30 AC.

601  
3.42 AC.

603  
6.36 AC.

605  
5.03 AC.

600  
5.03 AC.

602  
8.18 AC.

506  
5.37 AC.

70

~~Paul~~  
Paul  
Coats

P 83012

RECEIVED

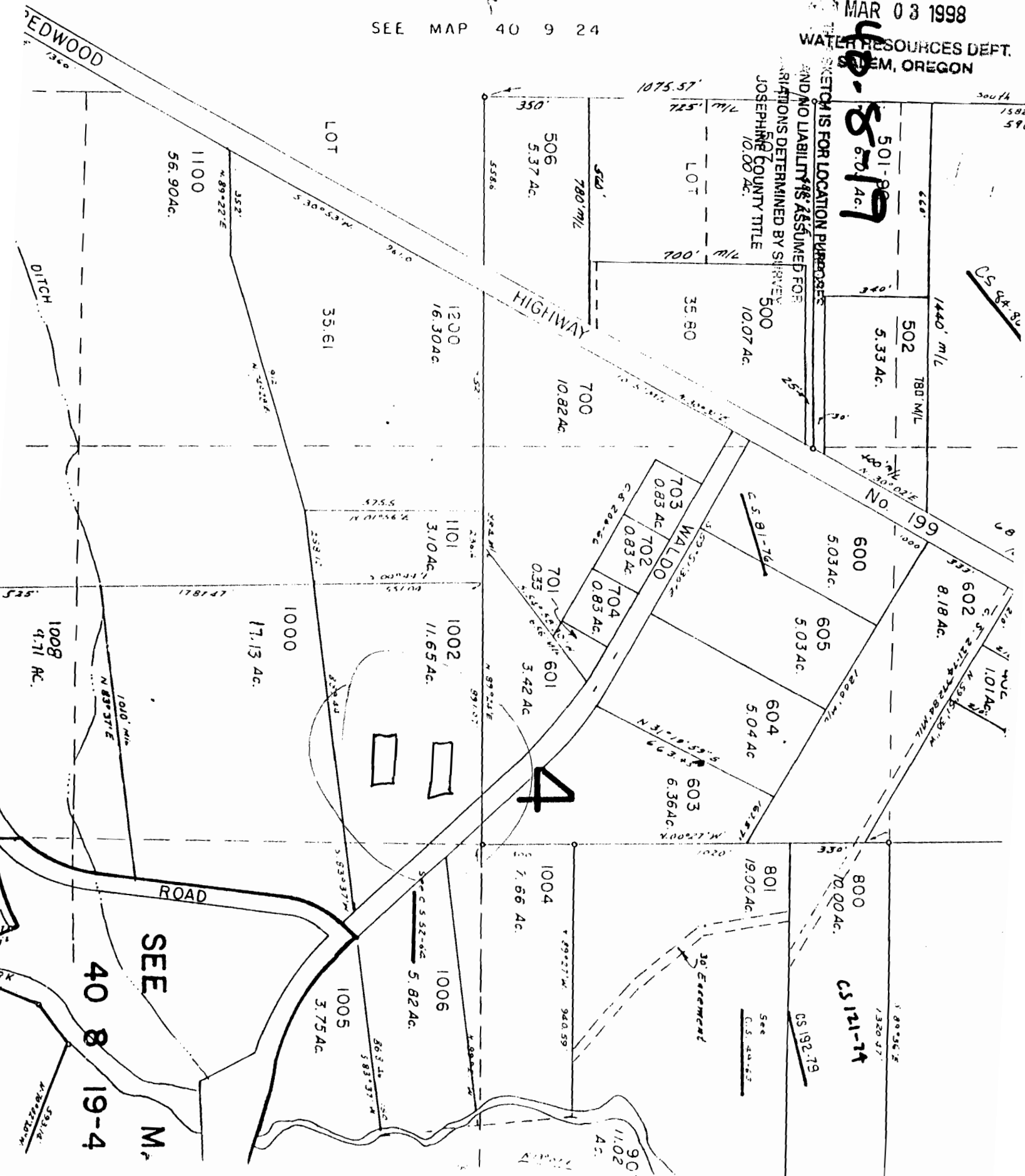
MAR 03 1998

WATER RESOURCES DEPT.  
SEASIDE, OREGON

SEE MAP 40 9 24

50-8-19  
501-90  
570 AC

SKETCH IS FOR LOCATION PURPOSES  
AND NO LIABILITY IS ASSUMED FOR  
CONDITIONS DETERMINED BY SURVEY  
JOSEPHINE COUNTY TITLE  
10.00 AC.



SEE MAP 40 8 19-4

4

CS 121-14

CS 192-19

See CS 44-65

30' Easement

ROAD

1004 7.66 AC

1006 5.82 AC

1005 3.75 AC

801 19.00 AC

800 70.00 AC

603 6.36 AC

604 5.04 AC

605 5.03 AC

600 8.18 AC

601 3.42 AC

1002 11.65 AC

1101 3.10 AC

1000 17.13 AC

1008 4.71 AC

701 0.35 AC

704 0.83 AC

702 0.83 AC

703 0.83 AC

700 10.82 AC

35.80

1200 16.30 AC

35.61

1100 56.90 AC

506 5.37 AC

502 5.33 AC

1440' M/L

No. 199

101 AC

101 AC

1320 FT

5.80 AC

11.02 AC

1580' 59'

CS 84-36

CS 51-76

CS 217-72

CS 192-19

CS 44-65

CS 121-14