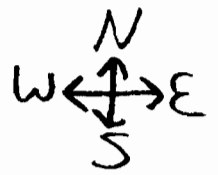
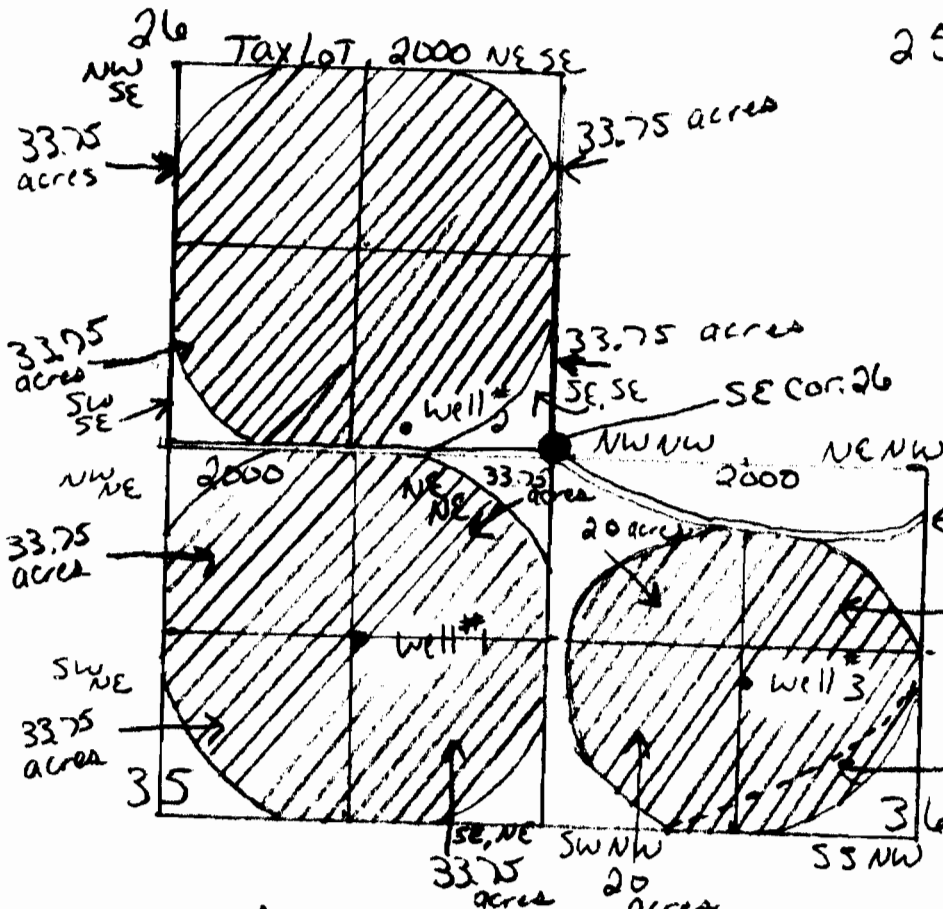


# Water right Application map

12. malheur Lake Twp. 25S, R30E, Wm:



7



25 Well #1 located 1320 ft South and 1320 ft West from the SE corner of Section 26

Well #2 located 950 ft West and 90 ft North of SE corner of Section 26

Well #3 located 1450 ft South and 1320 ft East from the SE corner of Section 26

4

Point of Appropriation:

- Sec 35 Well #1 SE, NE
- Sec 26 Well #2 SE, SE
- Sec 36 Well #3 SW, NW

- Scale
- 1" = 1320 ft.
  - 4" = 1 mile
  - = Well site
  - = = roadway
  - - - = Power lines
  - /// = Proposed area to be irrigated
  - = Corner Section

RECEIVED

JAN 05 2007  
WATER RESOURCES DEPT.  
SALEM, OREGON

Place of use:

- Sec 35
- NW, NE 33.75 acres
  - NE, NE 33.75 acres
  - SW, NE 33.75 acres
  - SE, NE 33.75 acres

- Sec 26
- NW, SE 33.75 acres
  - NE, SE 33.75 acres
  - SW, SE 33.75 acres
  - SE, SE 33.75 acres

- Sec 36
- NW, NW 20 acres
  - NE, NW 20 acres
  - SW, NW 20 acres
  - SE, NW 20 acres