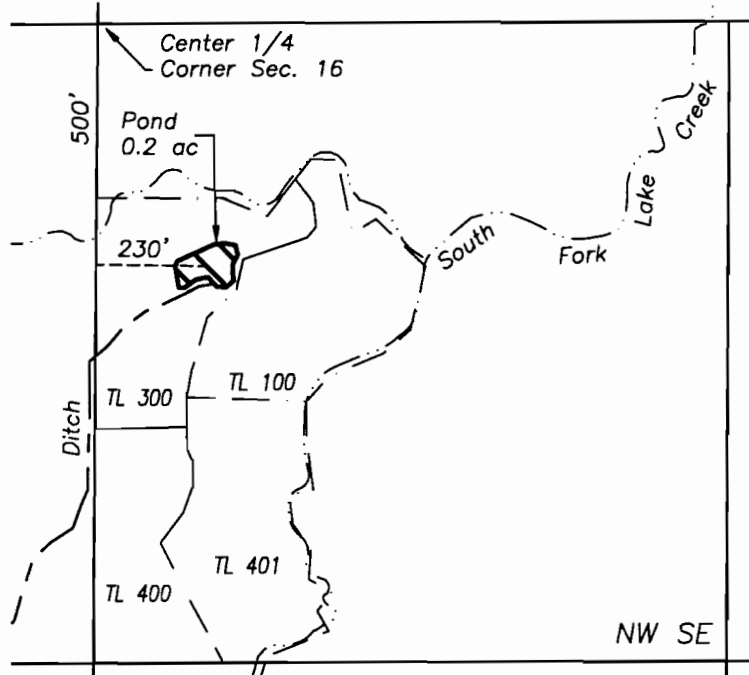
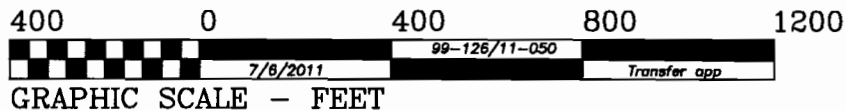


R-87924



Section 16
T13S, R9E, W.M.
Jefferson County, Oregon

Center of pond is approximately 500' S and 230' E of
Center 1/4 Corner of Section 16



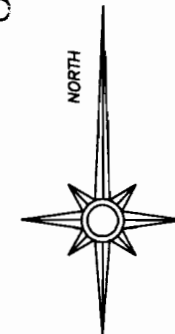
Application for Pond Storage

Tax Lot 300
Map 13-09-16DB
Jefferson County, Oregon

RECEIVED BY OWRD

AUG 05 2013

SALEM, OR



THIS MAP IS FOR THE PURPOSE OF IDENTIFYING THE LOCATION OF
THE WATER RIGHT. IT IS NOT INTENDED TO PROVIDE LEGAL
DIMENSIONS OR LOCATIONS OF PROPERTY OWNERSHIP LINES.