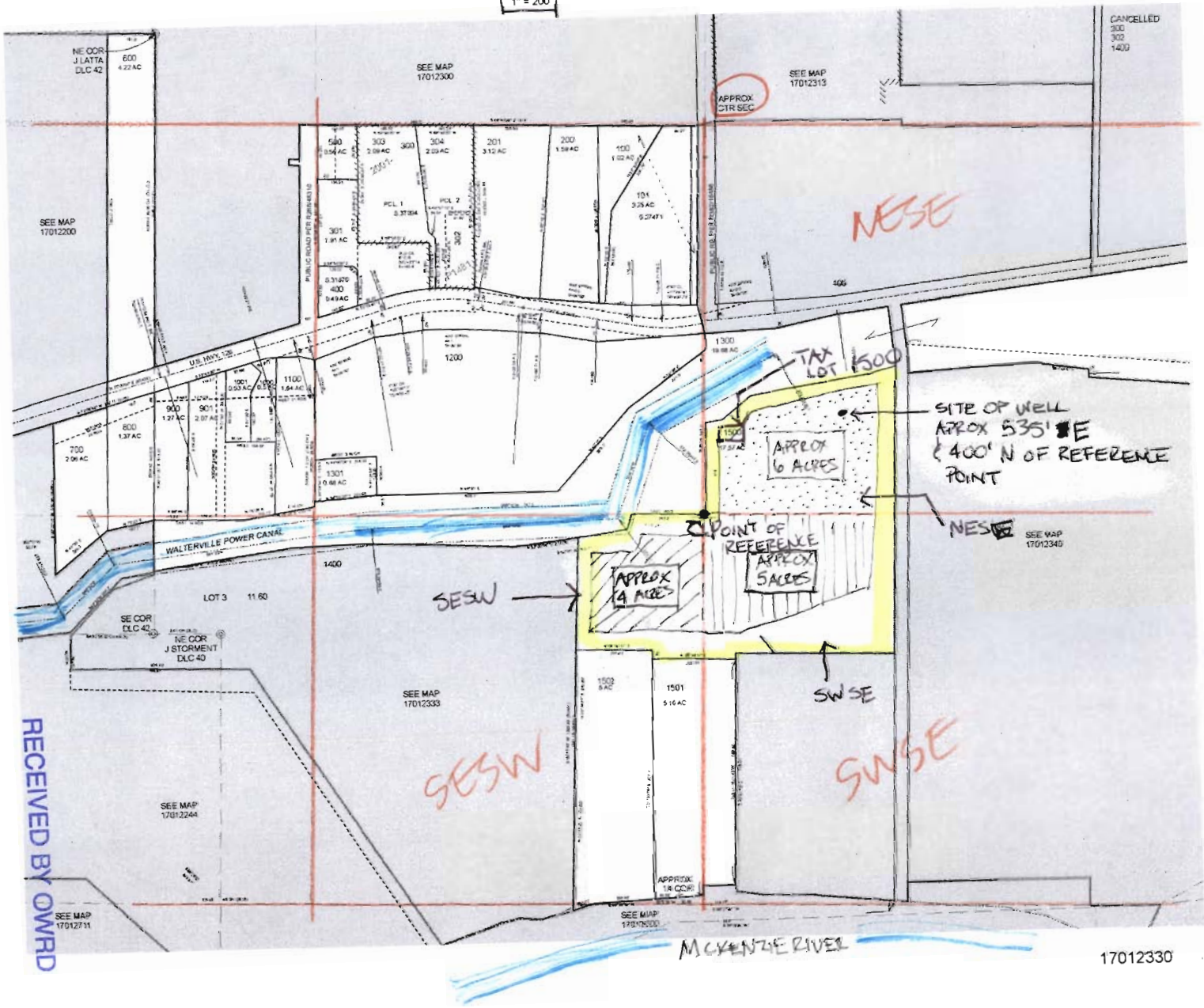


Added 7-25-13
KFK

FOR ASSESSMENT AND
TAXATION ONLY

S.W.1/4 SEC. 23 T.17S. R.1W. W.M.
Lane County
1" = 200'

17012330



RECEIVED BY OWRD

AUG 09 2013

SALEM, OR

17012330

Added 7-25-13
KJK

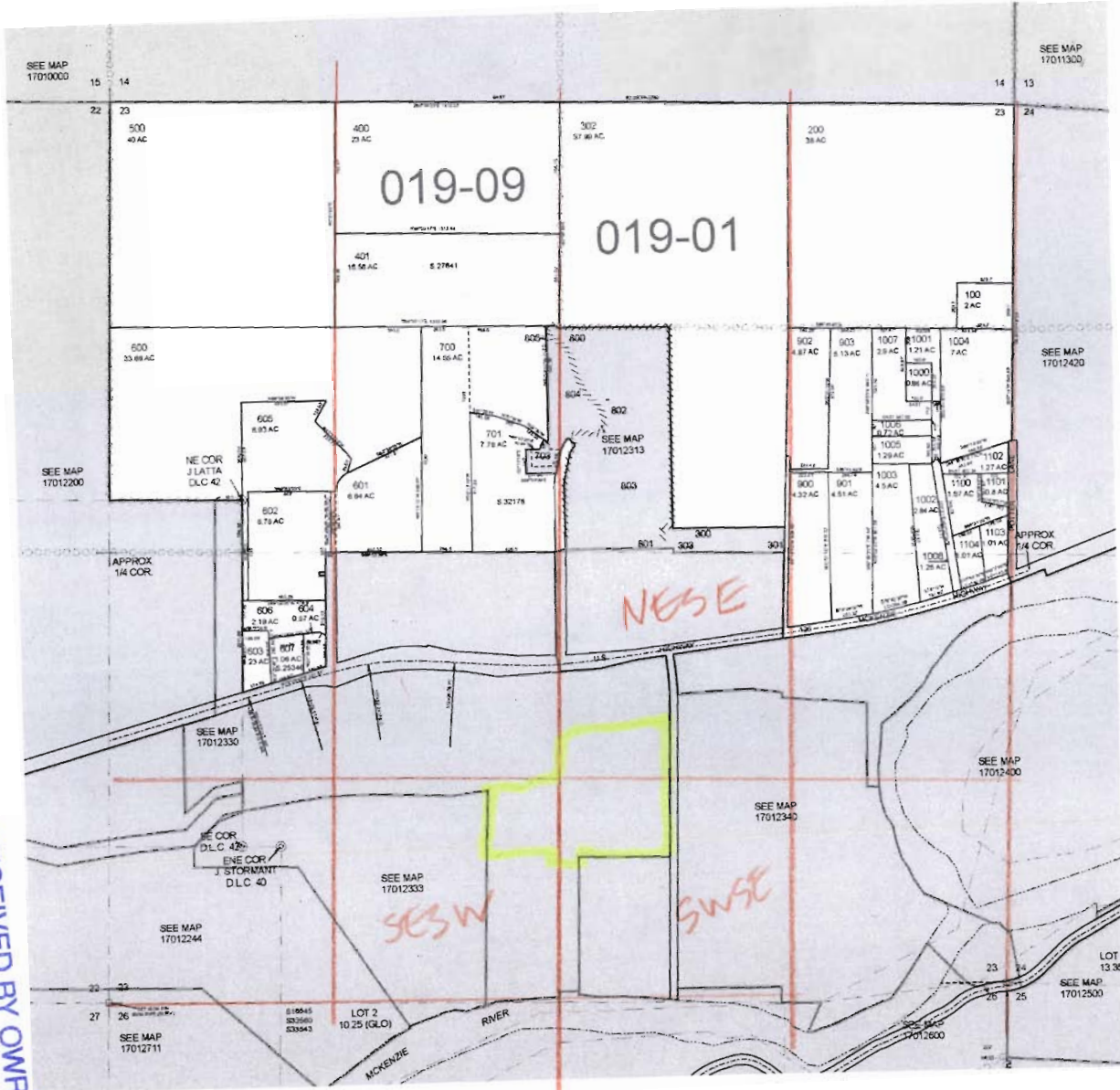
FOR ASSESSMENT AND TAXATION ONLY

SECTION 23 T.17S. R.1W. W.M.
Lane County
1" = 400'

17012300

LOCATED: 2015-04-18 09:15

- CANCELLED
- 300
- 301
- 303
- 702
- 800
- 801
- 802
- 803
- 804
- 805



RECEIVED BY OWRD

AUG 09 2013

SALEM, OR

17012300

- MINOR
- MAJOR

partition

Walterville Canal

lane county



Note: Minimum 1st Floor elevation shall be 607 feet above m.s.l.

Parcel 1
Section 23
Township 17 S
Range 1 W
Tax lot 1500

Parcel 1
17.181 Ac. ±

proposed well in NW 1/4 of the SE 1/4 (farthest away from McKenzie River)

* No wells currently on property

RECEIVED BY OWRD

JUL 24 2013

SALEM, OR RECEIVED BY OWRD

AUG 09 2013

SALEM, OR

Final Partition Map for

Donald R. Bigelow

3 1/2 Sec. 23 & NW 1/4, Sec. 26, T17S, R1W, W.M.

Lane County, Oregon

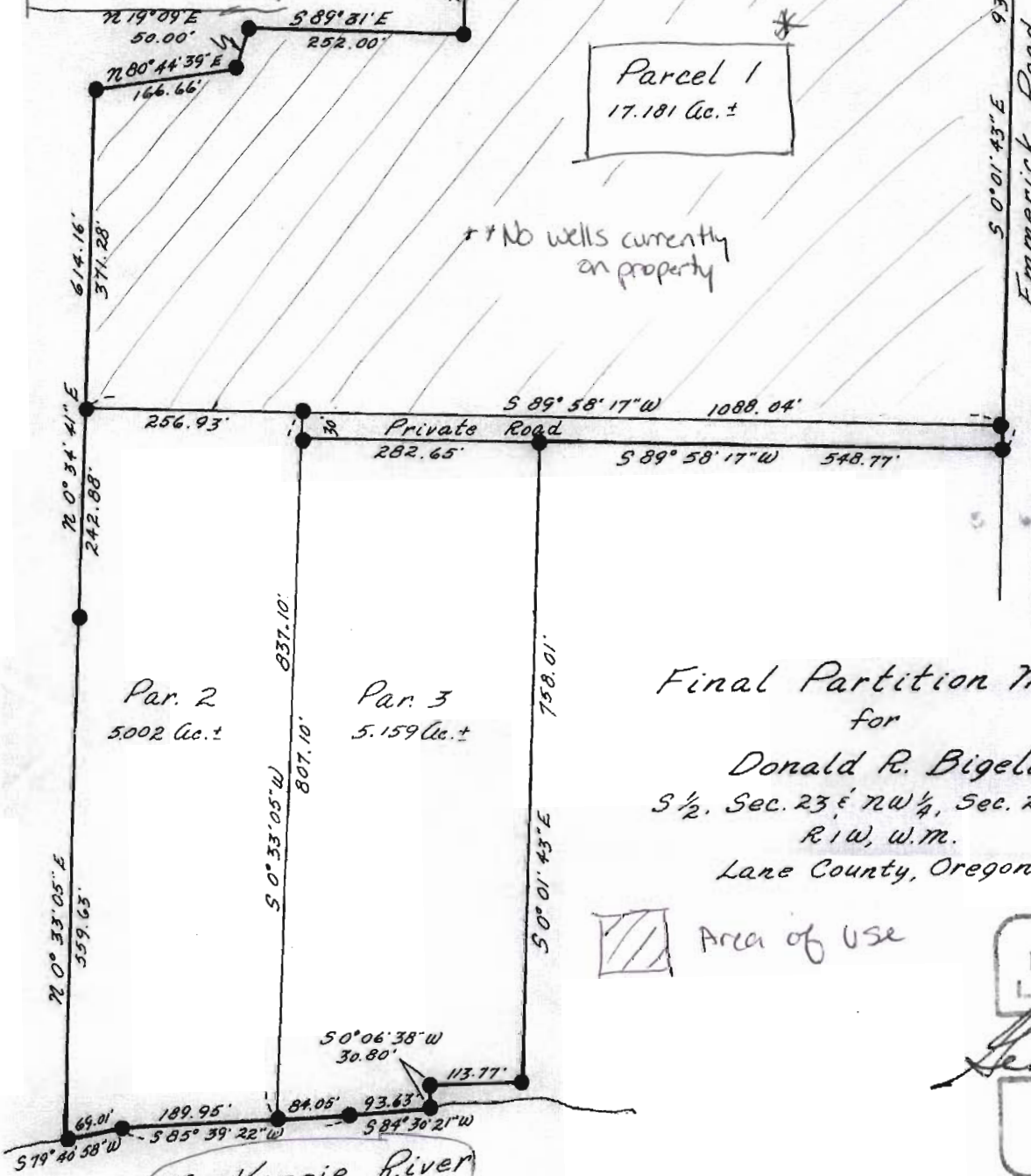
Area of Use

REGISTERED PROFESSIONAL LAND SURVEYOR

Gerald K. Attig

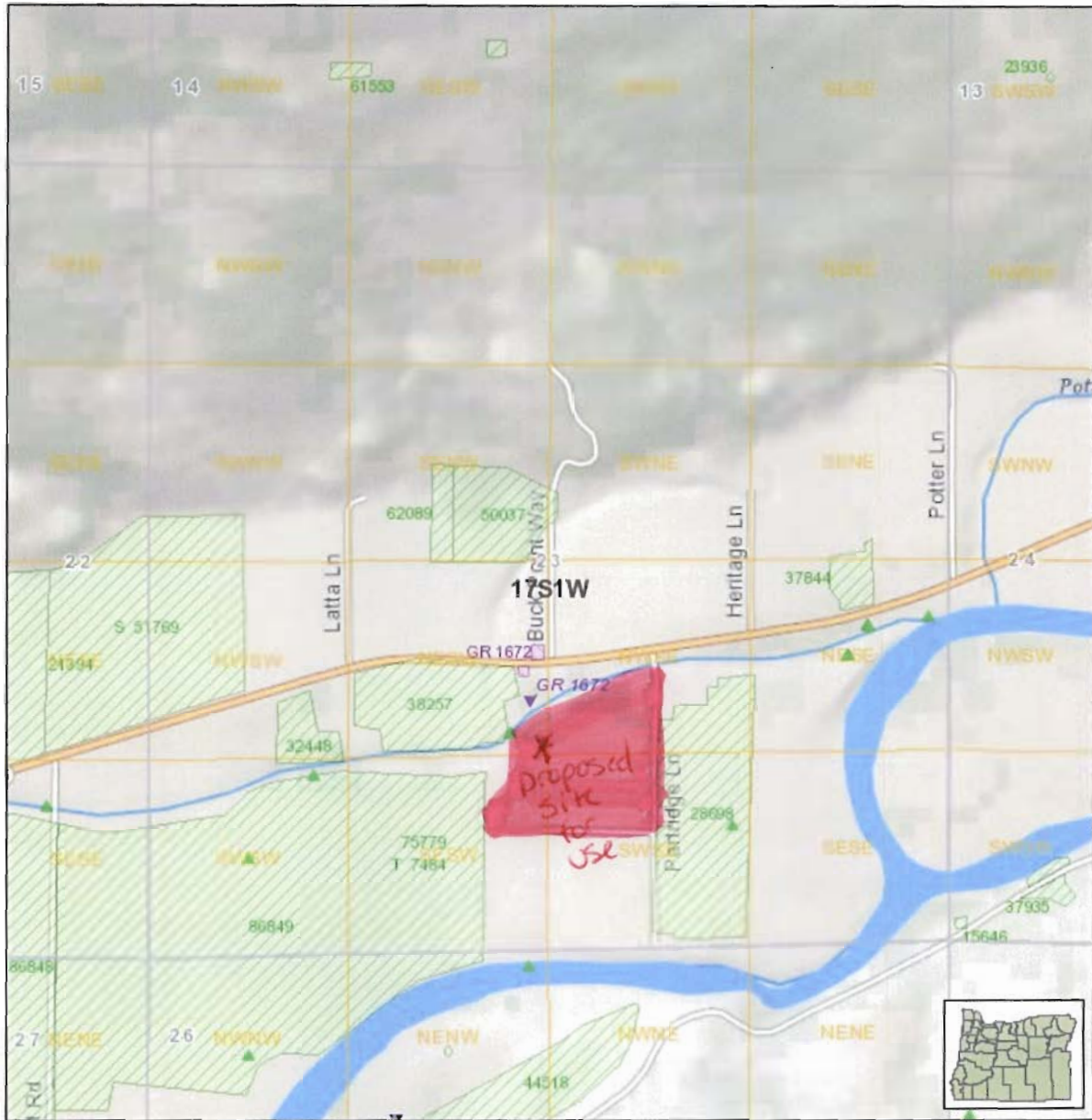
OREGON
SEPTEMBER 23 1977
GERALD K. ATTIG
1121

78580 27



OR Water Resources Map

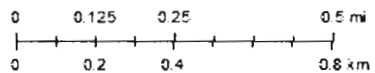
Oregon Water Resources Department
725 Summer St NE, Suite A, Salem, OR 97301
(503)988-0900



Printed: July 18, 2013

1:15,858

- Points of Diversion - ST
- Storage water
- Points of Diversion - SW
- Surface water
- Points of Diversion - GW
- Ground water



National Geographic, Esri, DeLorme, NAVTEQ, UNEP-WCMC, USGS, NASA, ESA, METI, NRCAN, GEBCO, NOAA, IPC, USGS, TNM - National Transportation Dataset, U.S. Census Bureau - TIGER/Line

Disclaimer: <http://www.oregon.gov/owrd/pages/MAPS/index.aspx#D'sclaimer>

Map generated by Oregon Water Resources Department

RECEIVED BY OWRD

RECEIVED BY OWRD

JUL 24 2013

AUG 09 2013

SALEM, OR

SALEM, OR