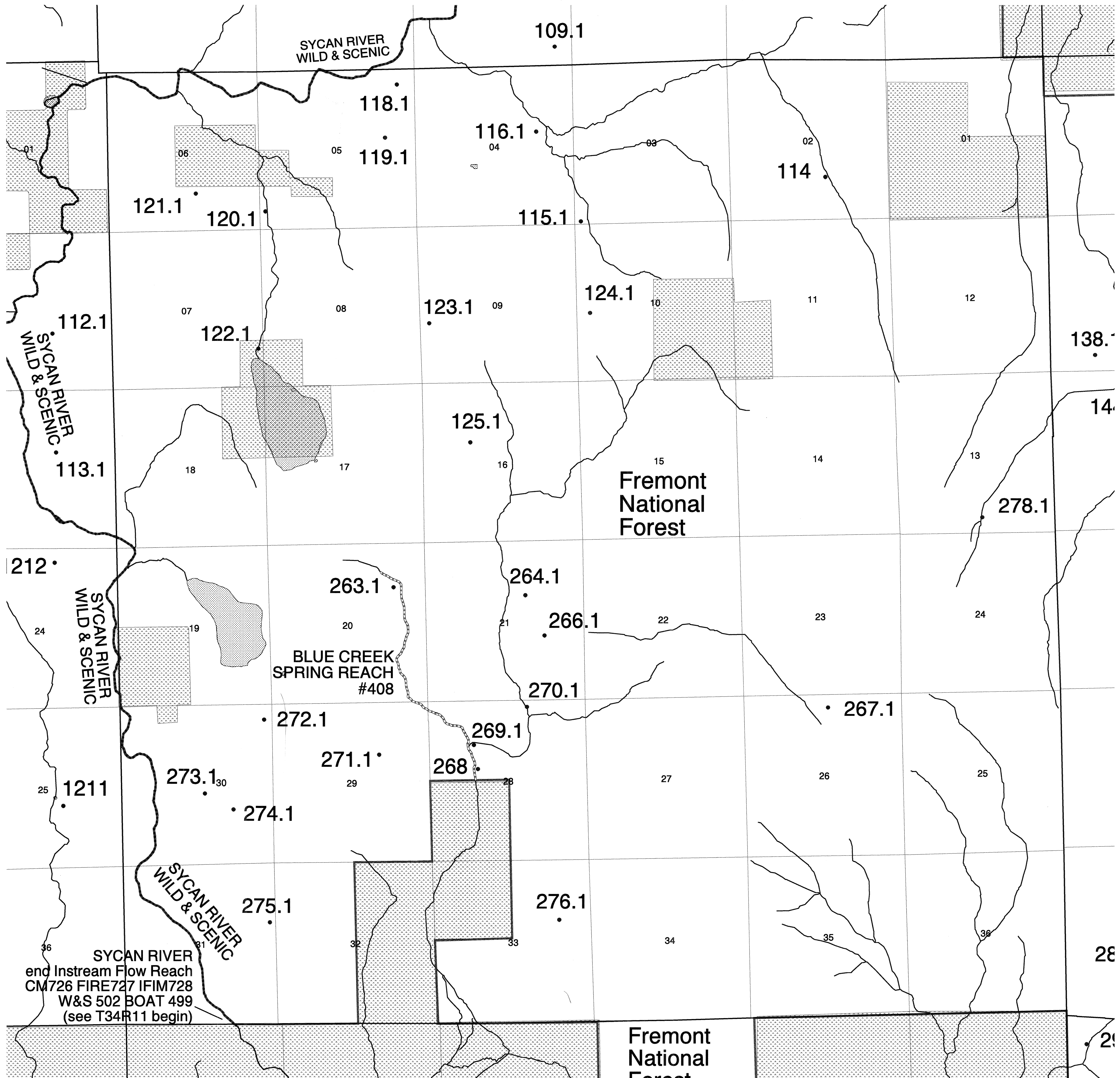


TOWNSHIP 34 SOUTH, RANGE 12 EAST, W.M.

CLAIM # 377 PAGE # 224

RECEIVED

OCT 14 1999



SYCAN RIVER WILD & SCENIC

SYCAN RIVER WILD & SCENIC

Fremont National Forest

BLUE CREEK SPRING REACH #408

SYCAN RIVER WILD & SCENIC
end Instream Flow Reach
CM726 FIRE727 IFIM728
W&S 502 BOAT 499
(see T34R11 begin)

Fremont National Forest