

6-77113



RECEIVED BY OWRD

AUG 15 2013

SALEM, OR



Well L111239 is a high capacity well that will irrigate 10 Acres of land and provide the site with potable water.

Well L111238 is a smaller well which will irrigate 5 Acres of Greenhouse Nursery and will also provide the site with potable water

Hash Lines indicate area of irrigation (field and greenhouses)

G-17713

RECEIVED BY OWRD

AUG 15 2013

SALEM, OR

Details Add Basemap

Save Share Print Measure Bookmarks Woodbu

About Content Legend

Oregon Public Land Survey System (PLSS)

Oregon Public Land Survey System (PLSS) boundaries for Oregon.

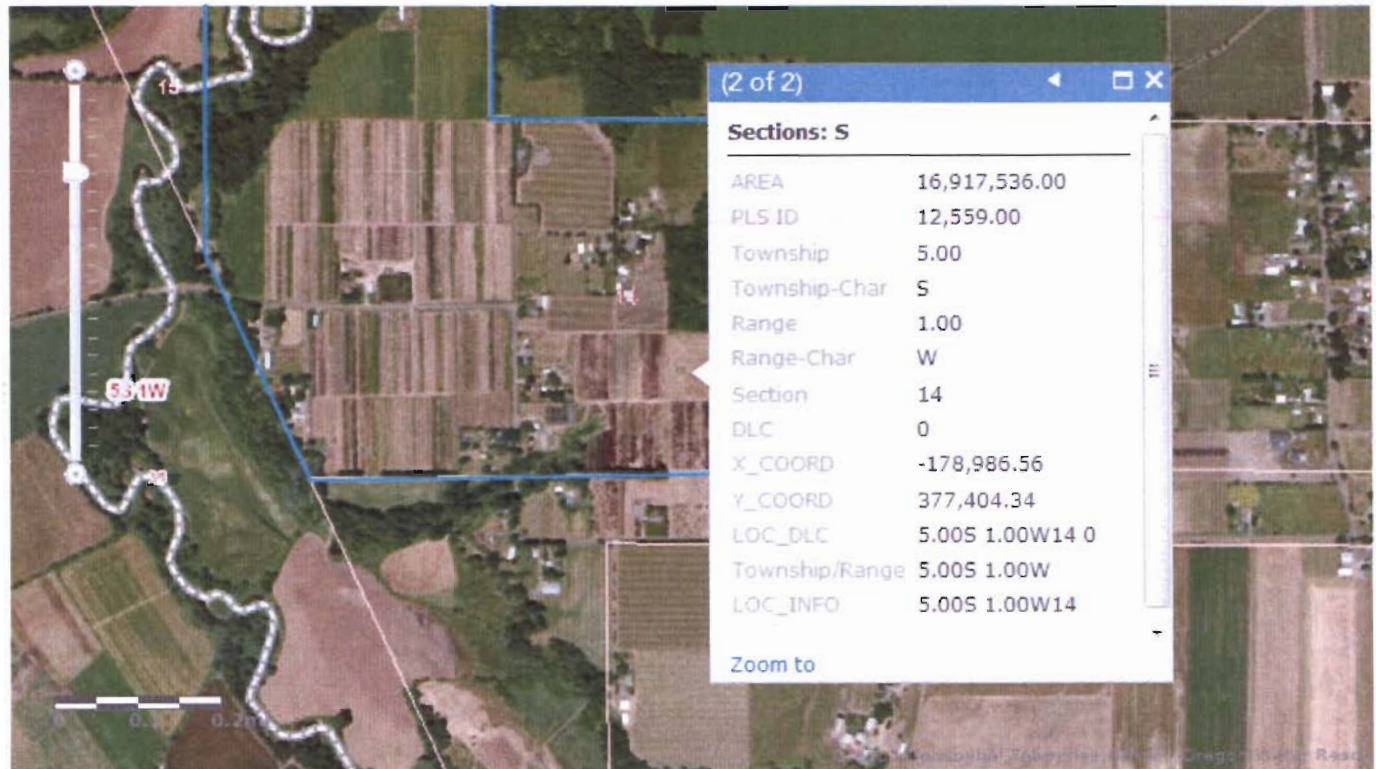
Web Map by navigatOR2010
Last Modified: December 7, 2012
(0 ratings, 0 comments, 214 views)

More Details...

Make your own map

Add to this map

Make a new map



G-17713

Arc GIS of Well: L111239
Nearest PLS: 12,559.00
Range: 1 West
Section 14
SE Quarter of the SE Quarter
Scale 1" = .2 mi on map

RECEIVED BY OWRD

AUG 15 2013

SALEM, OR

ArcGIS - Oregon Public Land Survey System (PLSS)

NEW MA

Details Add Basemap

Save Share Print Measure Bookmarks Woodburr

About Content Legend

Oregon Public Land Survey System (PLSS)

Oregon Public Land Survey System (PLSS) boundaries for Oregon.

Web Map by navigatOR2010
Last Modified: December 7, 2012

(0 ratings, 0 comments, 214 views)

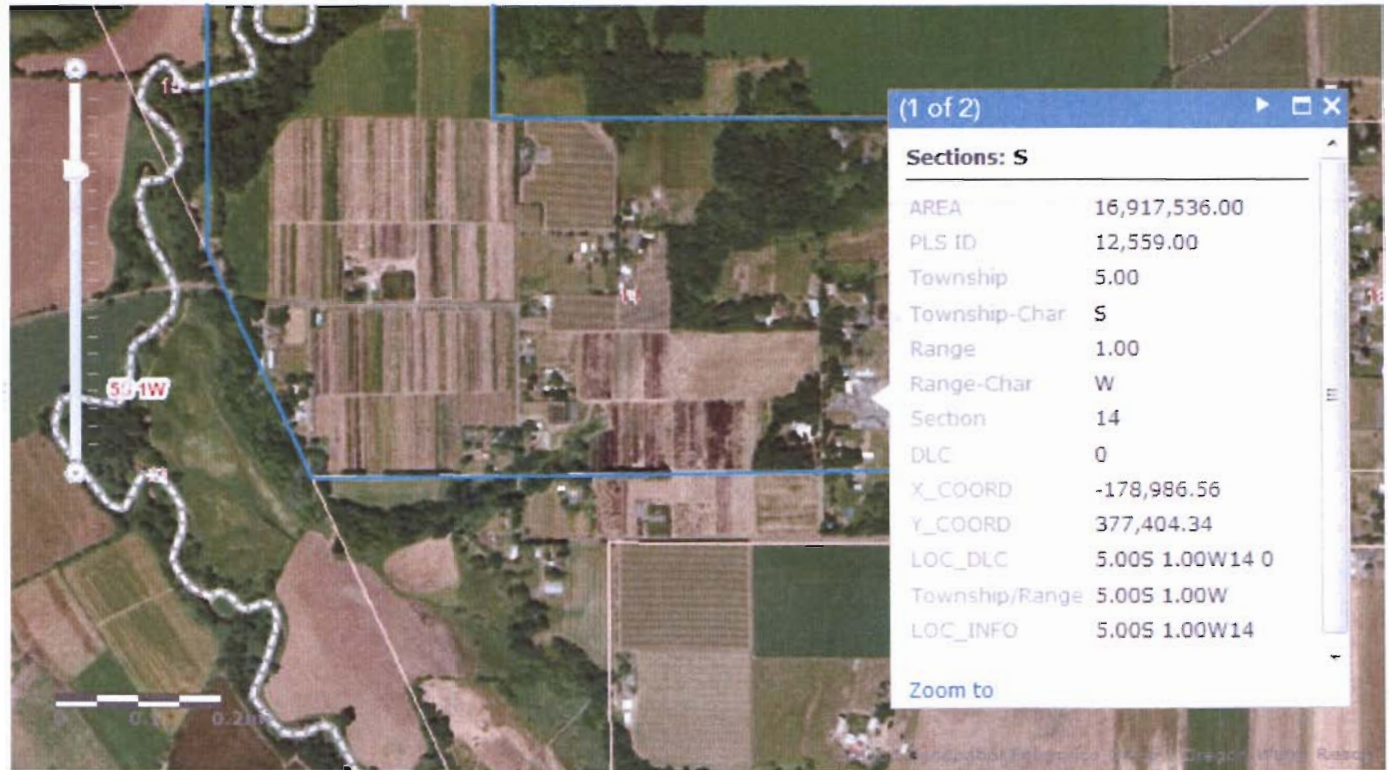
More Details...

Make your own map

Add to this map

Make a new map

Esri.com Help Terms of Use Privacy Contact Us Report Abuse

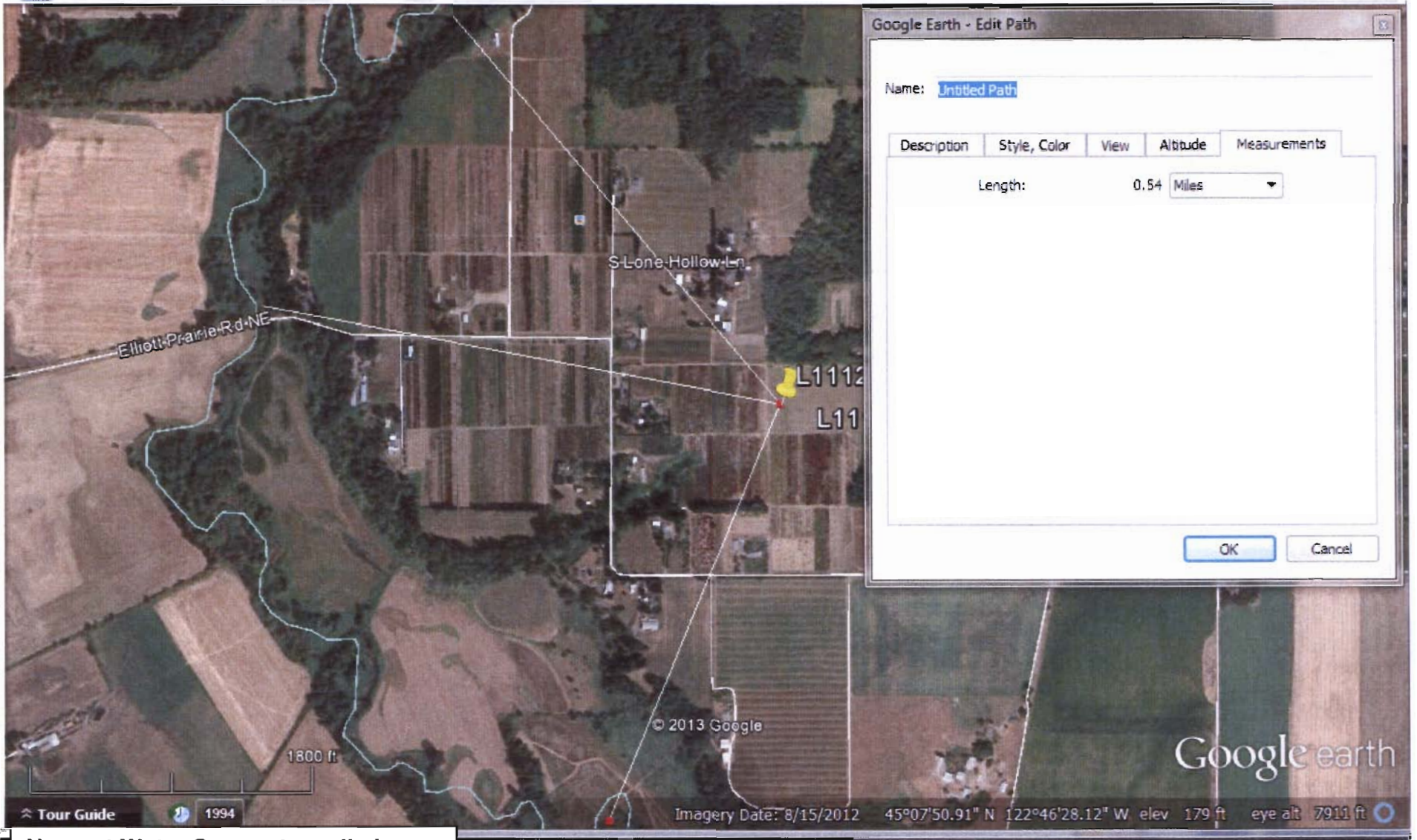


Arc GIS of Well: L111238
Nearest PLS: 12,559.00
Range: 1 West
Section 14
SE Quarter of the SE Quarter
Scale 1" = .2 mi on map

RECEIVED BY OWRD

AUG 15 2013

SALEM, OR



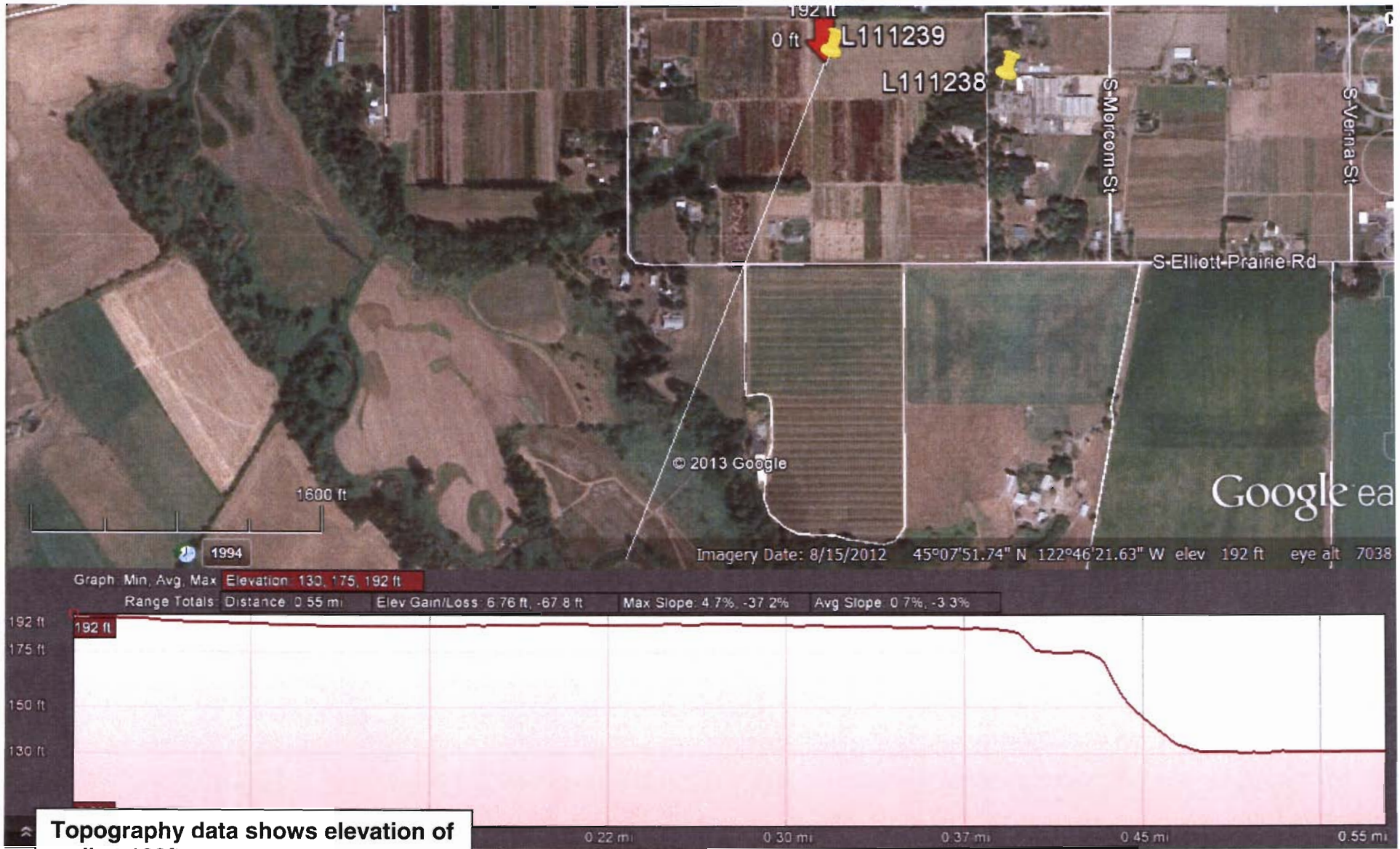
G-17A3

Nearest Water Source to wells is determined to be .54mi to .63mi from closest well. Closest path used in Topographic data maps
Scale 1" = 1800ft

RECEIVED BY OWRD

AUG 15 2013

SALEM, OR



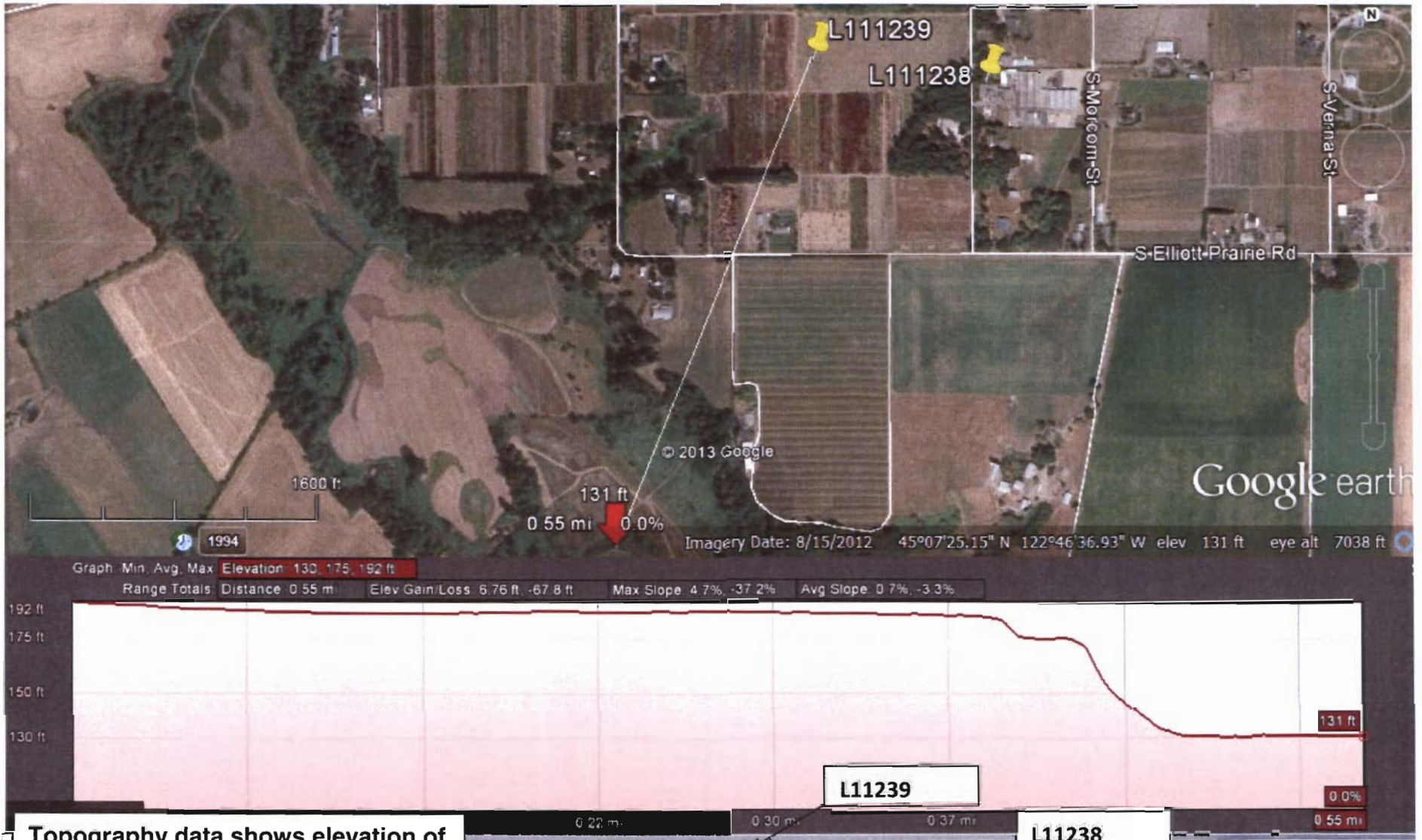
6-17-13

Topography data shows elevation of well at 192ft
Scale 1" = 1600ft on map

RECEIVED BY OWRD

AUG 15 2013

SALEM, OR



SFH-19

Topography data shows elevation of river at 131ft giving a elevation change of 61 ft.
 Well is uphill of River
 Scale 1" = 1600ft on map

RECEIVED BY OWRD

AUG 15 2013

SALEM, OR