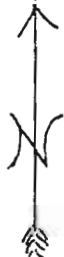


Sec. 31 T.17S. R.4W. W.M.
 Lane County
 1" = 400'

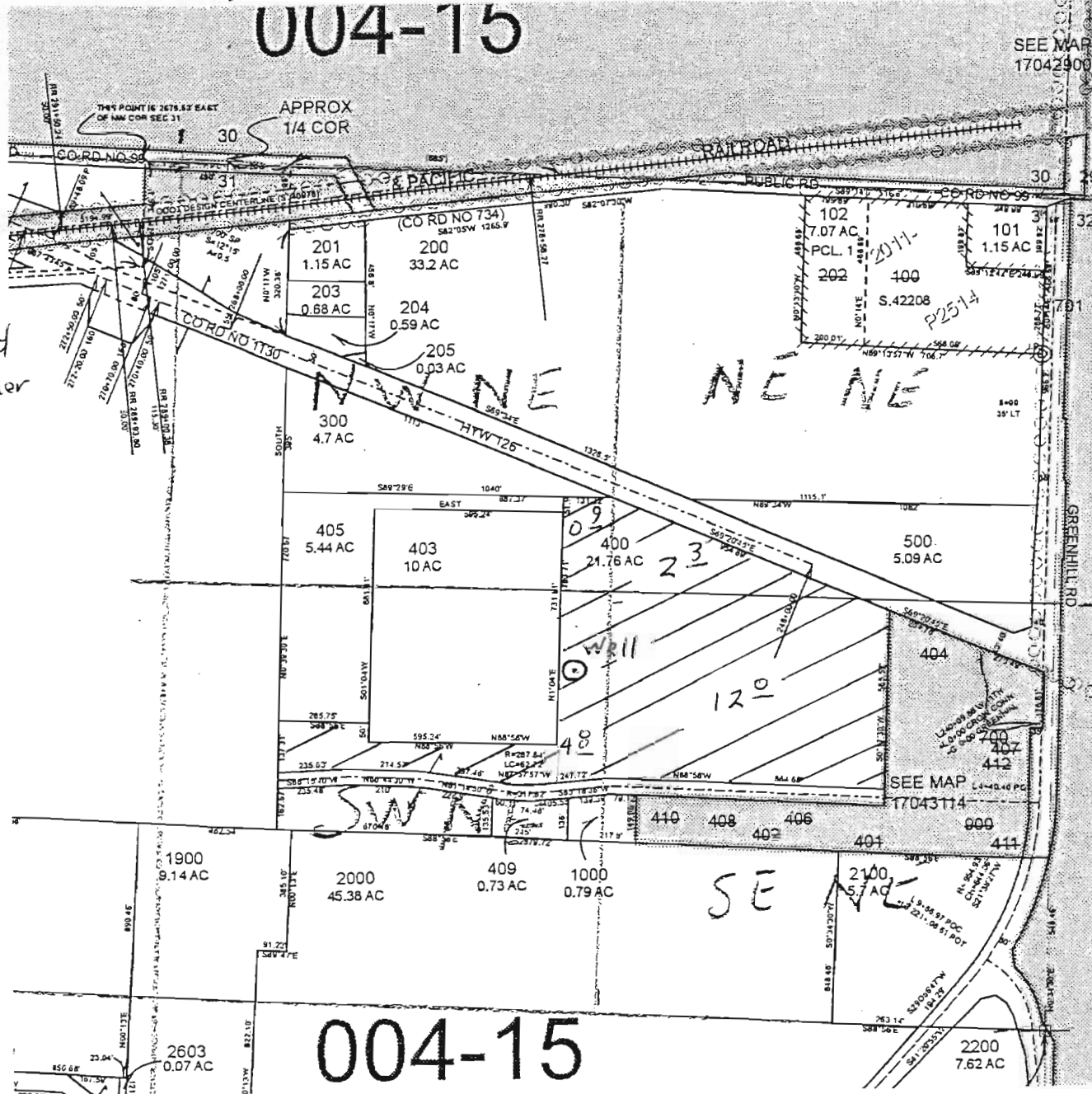


Scale 1" = 500'

Well is 1575 ft. South and
 1500 ft. West from NE corner
 section 31

Acres	
NE NE	2.3
NW NE	0.9
SW NE	4.8
SE NE	12.0
All on tax lot 400	

G-17726



RECEIVED BY OWRD

OCT 11 2013

SALEM, OR