

G17727

RECEIVED BY OWRD

OCT 15 2013

SALEM, OR

SECTION 25 T.3S. R.1E. W.M. CLACKAMAS COUNTY

1" = 400'

This map was prepared for
assessment purpose only.

DETAIL TL 503
'A' RADIUS 10.12'
LENGTH 15.87'
CORD 14.28'
'B' RADIUS 20.00'
LENGTH 31.33'
CORD 28.22'

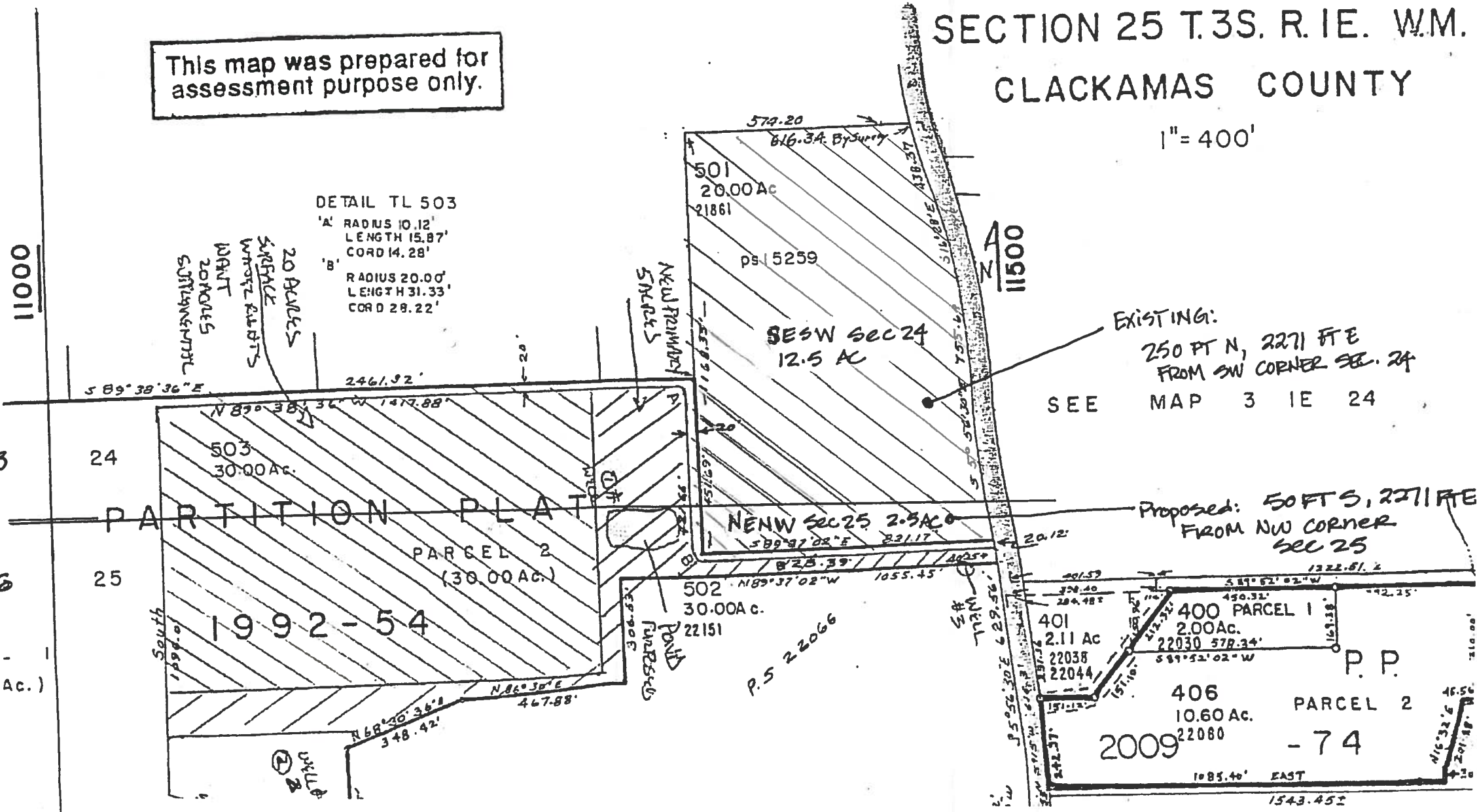
20 PILES
SURFACE
WATER RIGHTS
WANT
20 PILES
SURFACE
WATER RIGHTS

NEW FARMWAY
SPURTS

11500

EXISTING:
250 FT N, 2271 FTE
FROM SW CORNER SEC. 24
SEE MAP 3 IE 24

Proposed: 50 FTS, 2271 FTE
FROM NW CORNER
SEC 25



100011

23

24

26

25

Ac.)

PARTITION PLAT

1992-54

PARCEL 2
(30.00 AC.)

501
20.00 Ac
21861

SESW SEC 24
12.5 AC

NEWW SEC 25 2.5 AC

502
30.00 Ac.
22151

401
2.11 Ac
22038
22044

400 PARCEL 1
2.00 Ac.
22030 578.34'

406
10.60 Ac.
22080

PARCEL 2
- 74

2009

1543.452

