

011729

MAP TO ACCOMPANY SUPPLEMENTAL GROUNDWATER APPLICATION

WENDT FAMILY LLC

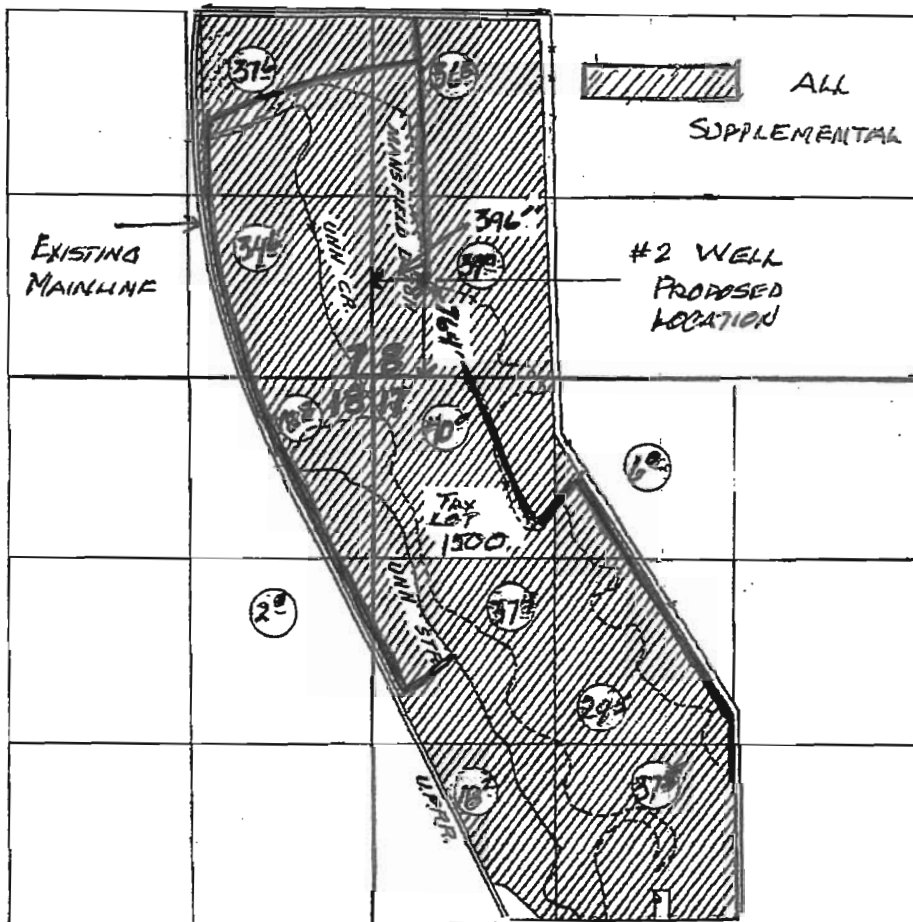
T. 7 S. R.39 E. W.M.

NORTH



Scale: 1" = 1320'

Tax Lot 1500



Proposed well location:

From the Southwest corner of Sec. 8, T. 7 S., R. 39E., W.M., a distance of 764 feet, thence East, a distance of 396 feet

Southwest corner of Section 8 location: N. 44°57' 46.6"
W. 117°58'21.4"

Well GPS location: N. 44 57'52.1", W. 117°58'15.8"

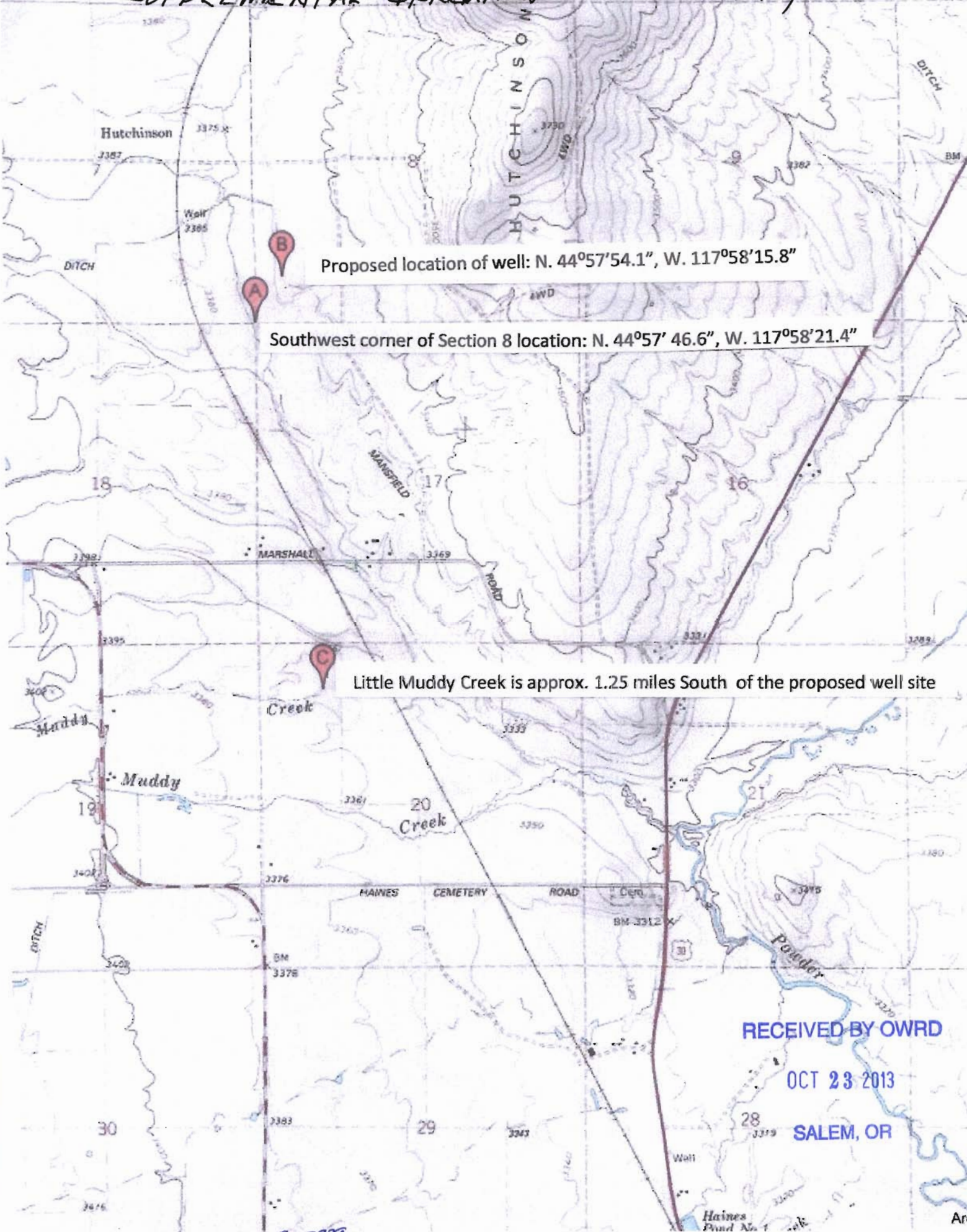
Location scaled from an approximate corner location of SE corner of Section 8, from the Haines USGS Quad map.

SALEM, OR

OCT 23 2013

RECEIVED BY OWRD

SUPPLEMENTAL IRRIGATION - WENDT FAMILY LLC



Proposed location of well: N. 44°57'54.1", W. 117°58'15.8"

Southwest corner of Section 8 location: N. 44°57' 46.6", W. 117°58'21.4"

Little Muddy Creek is approx. 1.25 miles South of the proposed well site

RECEIVED BY OWRD

OCT 23 2013

SALEM, OR

G-17728

ArcG