

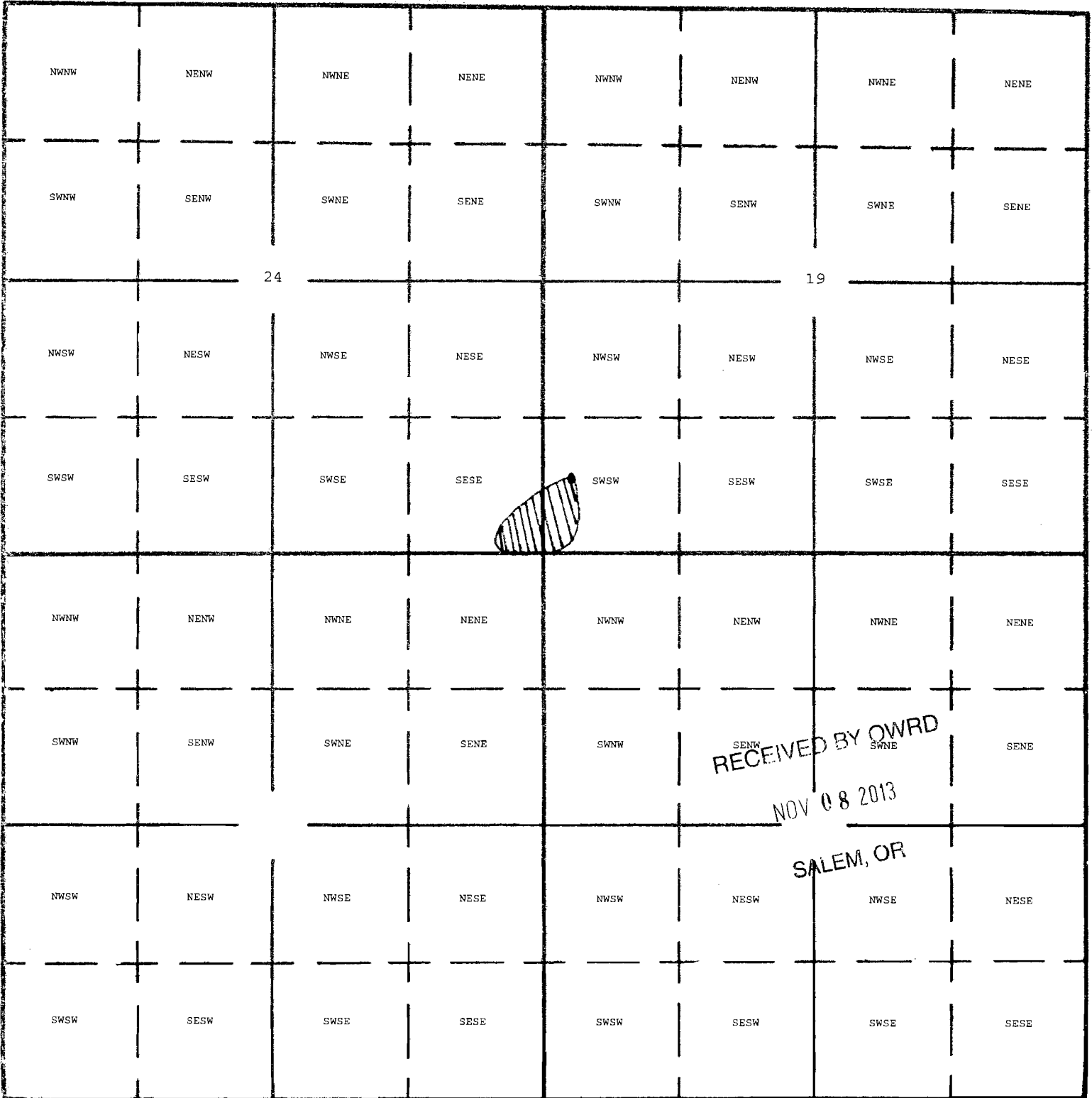
1" = 1320'

Tax Lot: 100 & 400



7 South, 5 West

7 South, 4 West



RECEIVED BY OWRD

NOV 08 2013

SALEM, OR

South

Dam Location: 700' North and 350' East from the SW corner of Section 19

Russell W. Quincy 9/13/2013

RECEIVED BY OWRD

SEP 30 2013

SALEM, OR

IMPORTANT
This Map for Assessment
and Taxation Purposes
ONLY

SEC. 24 T7S R5W WM.
POLK COUNTY

Scale 1" = 400'

7.5.24

14 13

13 18

25 24

24 19

302
75.31 AC

N.E. CORNER
HARRISON BRUNE
DLC NO. 51

S.E. CORNER
DLC NO. 59

S.S.W. CORNER
DLC NO. 71

S.S.E. CORNER
DLC NO. 71

See Map 7.5.13

IRRIGATION DITCH

202
79.94 AC
PARCEL 1
UNSURVEYED

LOT 1 - 21.14 AC

100
99.58 AC

Canceled No.

201
100

303
181.64 AC

LOT 2 - 42.06 AC

2-4

200
80.00 AC
PARCEL 2
UNSURVEYED

LOT 5 - 23.88 AC

N.W.W. CORNER
NATHANIEL FORD
DLC NO. 37

See Map 7.4.19

S.E. CORNER
DLC NO. 61

402
26.30 AC

401
16.18 AC

301
28.59 AC

N.E. CORNER
J.W. BOYLE
DLC NO. 55

LOT 4 - 28.08 AC

203
33.34 AC
PT PARCEL 3
UNSURVEYED

LOT 6 - 10.00 AC

400
4.60 AC

23 24

26 25

24 19

25 30

See Map 7.5.25

Pond location

08/02/13

7.5.24

RECEIVED BY OWRD

RECEIVED BY OWRD

NOV 08 2013

SALEM, OR

SEP 30 2013

SALEM, OR

IMPORTANT
This Map for Assessment
and Taxation Purposes
ONLY

SEC.19 T7S R4W WM
POLK COUNTY

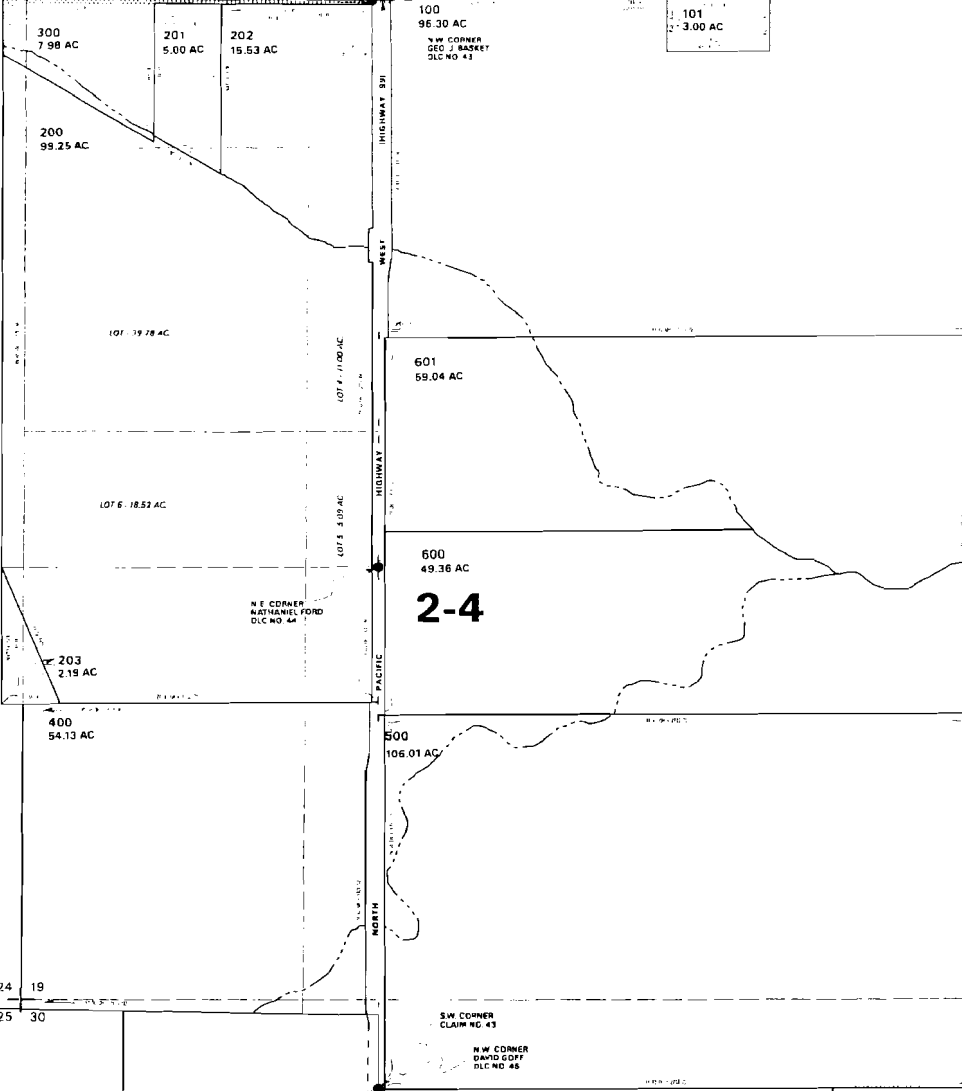
7.4.19

Scale 1" = 400'

3 18
24 19

18 17
19 20

See Map 7.4.18



Canceled No.

See Map 7.4.20

See Map 7.5.24

See Map 7.4.30

19 20
30 29

RECEIVED BY OWRD
NOV 08 2013
SALEM, OR

RECEIVED BY OWRD
SEP 30 2013
SALEM, OR

10/30/12

7.4.19