

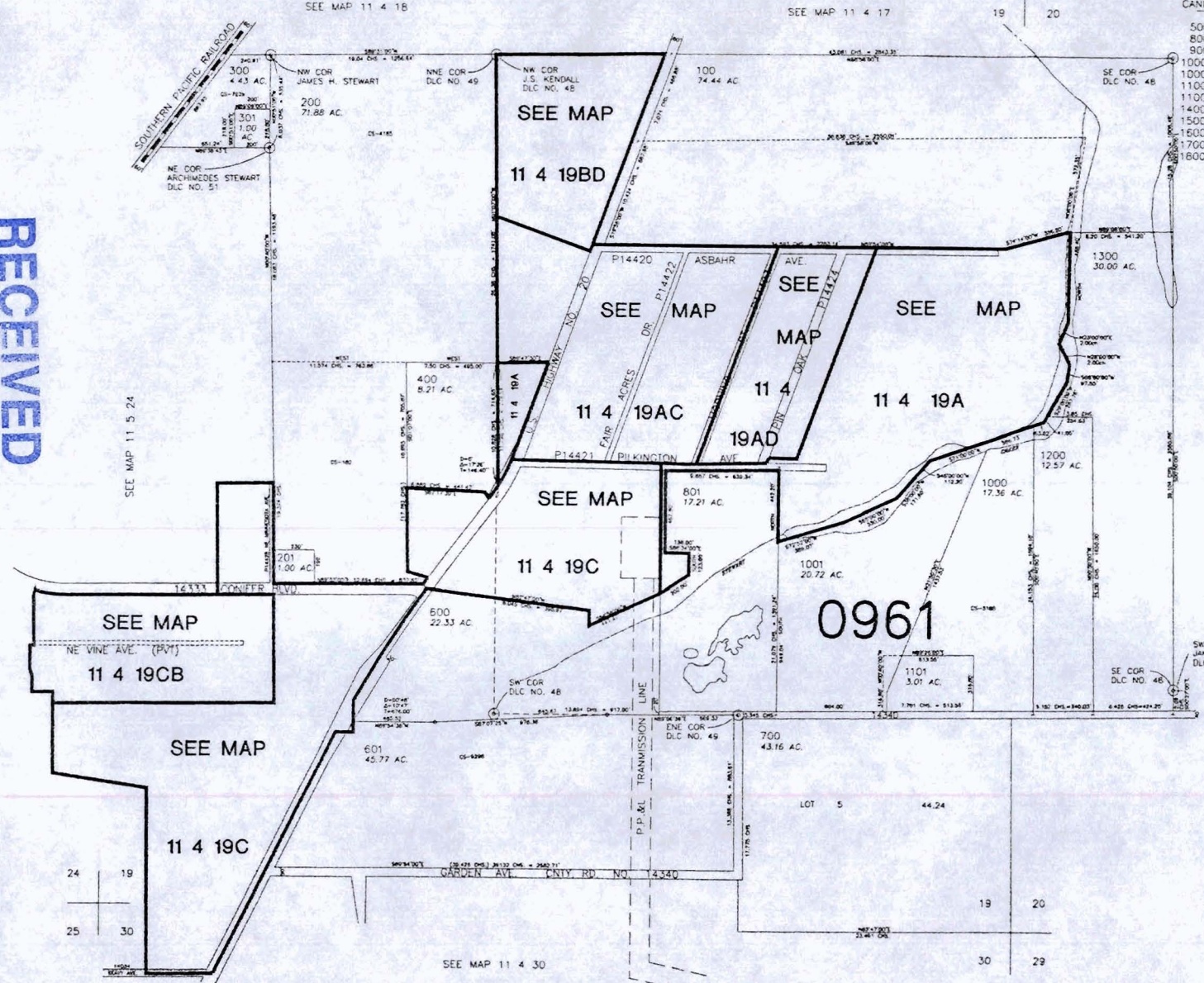
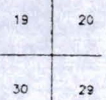
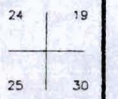
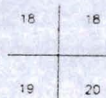
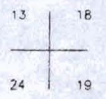
SECTION 19 T. 11S. R. 4W. W.M.
BENTON COUNTY

11 4 19

THIS MAP WAS PREPARED FOR
ASSESSMENT PURPOSES ONLY

1" = 400'

REV. 04-09-2002
CANC.



WATER RESOURCES DEPT
SALEM, OREGON

NOV 20 2013

RECEIVED

G17736

SE1/4 NE1/4 SEC. 19 T.11S. R.4W. W.M.
BENTON COUNTY

THIS MAP WAS PREPARED FOR
ASSESSMENT PURPOSES ONLY

11 4 19AD

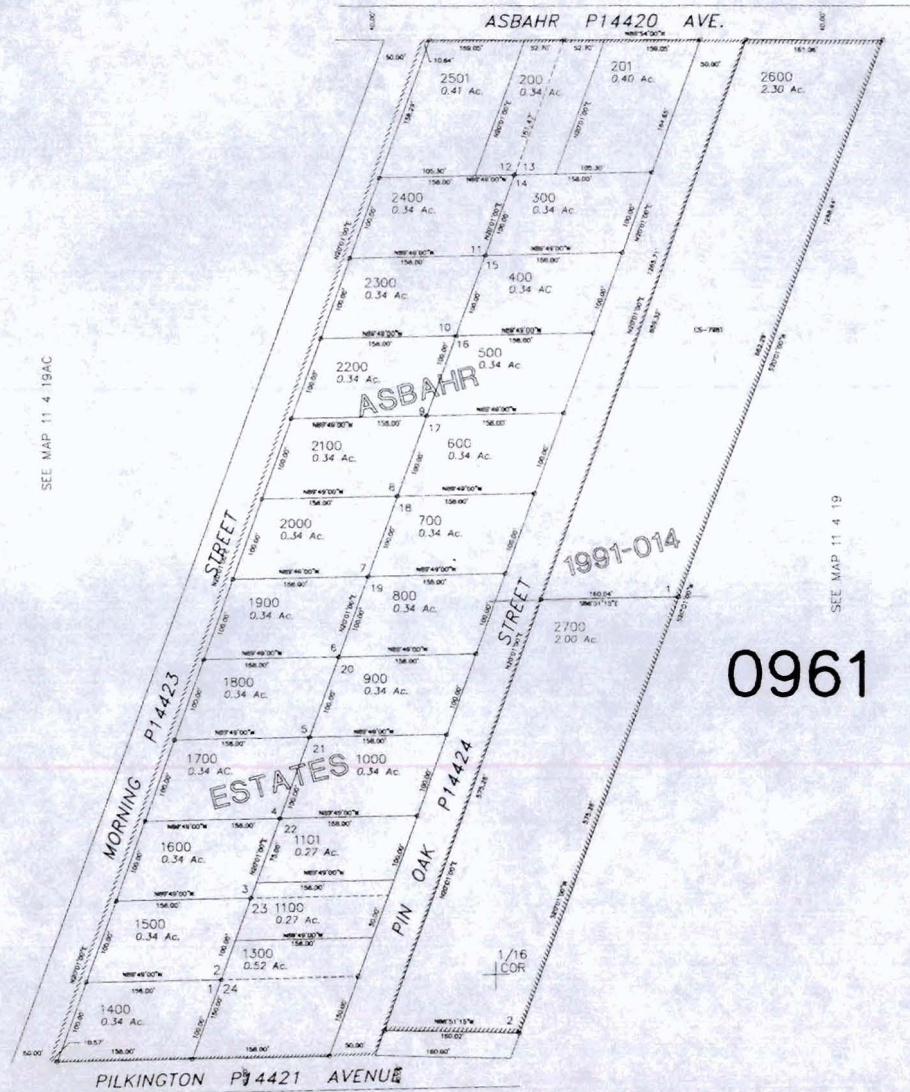
1" = 100'

1/16
COR

REV. 10-22-2001
CANC.

100
101
1200
2500

SEE MAP 11 4 19



SEE MAP 11 4 19AC

SEE MAP 11 4 19

617736

WATER RESOURCES DEPT
SALEM, OREGON

NOV 20 2013

RECEIVED

SEE MAP 11 4 19

11 4 19AD

Marvin Water Right Application

NWNE


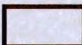

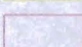

RECEIVED

NENE

NOV 20 2013

WATER RESOURCES DEPT
SALEM, OREGON

Legend

-  Benton
-  Townships
-  Sections
-  Quarter quarters
-  Marvin POU



POA (BENT 856) is 955 feet North and 1030 feet West from the E1/4 Corner
POU = 2.3 acres, taxlot 2600, 11S 4W 19, SENE

