

TWN. 2 NO., RANGE 13 E, W.M.

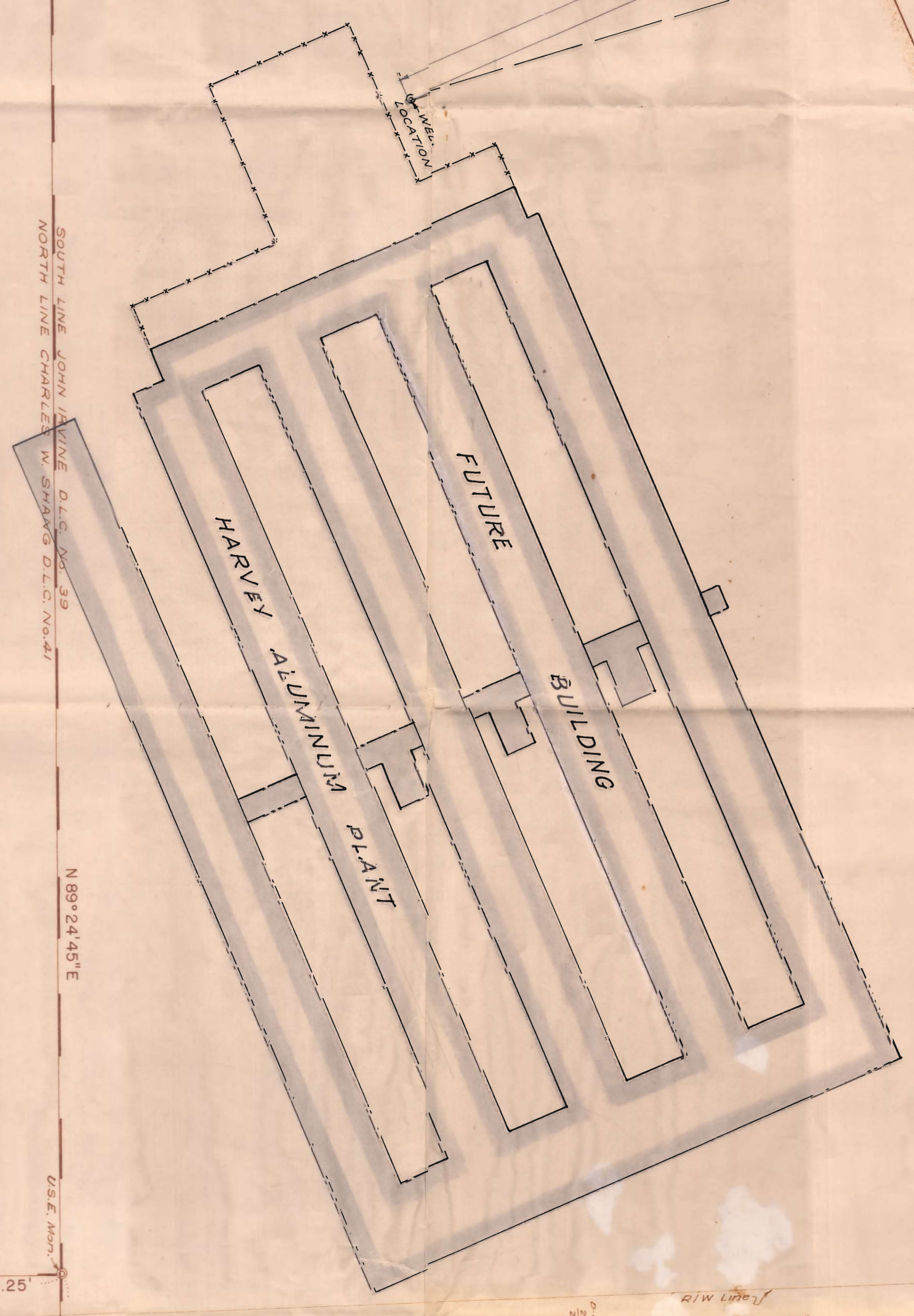
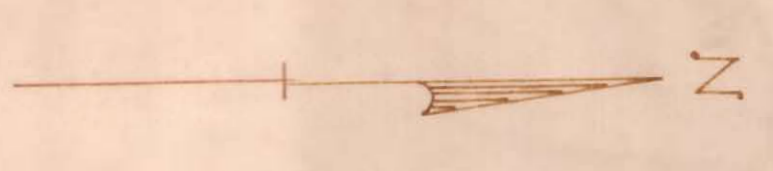
NORTH LINE JOHN IRVINE D.L.C. No. 39

29
28

29
28

29
28
32
33

29
28
32
33

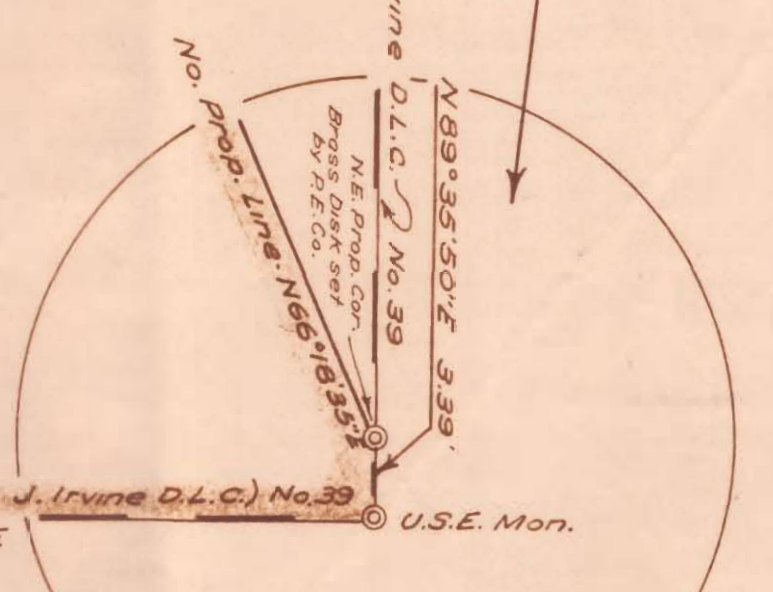


EAST LINE CHARLES W SHANG D.L.C. No. 41

EAST LINE JOHN IRVINE D.L.C. No. 39

BONNEVILLE POWER ADM. TRANS. LINE
DALLAS - GOLDENDALE

DETAIL
N.E. PROPERTY COR.
NOT TO SCALE



WELL LOCATION & BOUNDARY SURVEY
A TRACT OF LAND IN THE
CHARLES W SHANG D.L.C. 41-JOHN IRVINE D.L.C. 39
8 GOV'T. LOT 6
SECTIONS 28 & 29
T. 2N. R. 13E. W.M.
WASCO COUNTY
OREGON

FOR
HARVEY MACHINE CO. INC.
JAN., 1956

SCALE: 1" = 100'



RECEIVED
STATE ENGINEER
STATE OF OREGON