

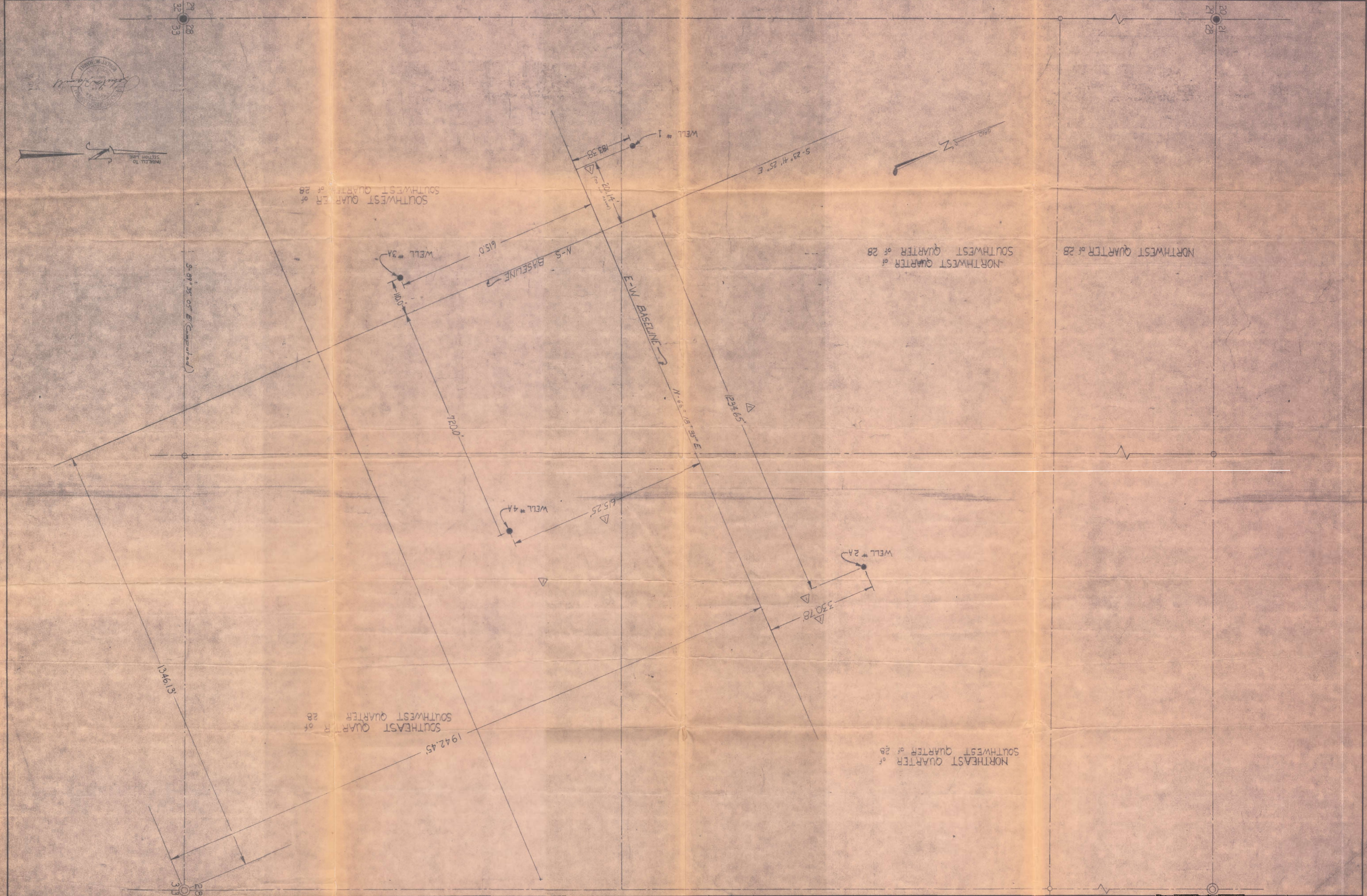
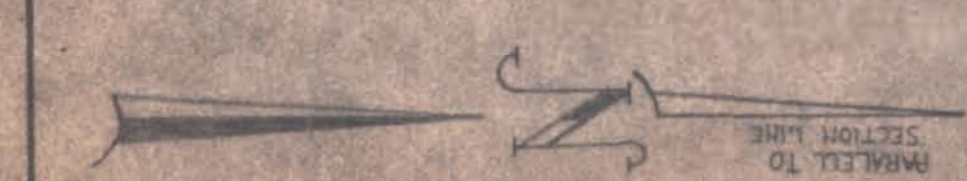
This document contains confidential information which is the property of this Company. Disclosure in any manner is expressly prohibited. Failure to observe this prohibition may result in legal action. This information is for the use of the Company only and is not to be distributed or published in any manner. This document is the property of the Company and shall remain the property of the Company.

CONFIDENTIAL

NO.	REVISION	DATE	BY	APPR.
APPROVED FOR CONSTRUCTION				
ENGINEERING STAFF				
DESIGN ENGINEER				
CHIEF ELECTRICAL ENGINEER				
CHIEF PROCESS ENGINEER				
CHIEF DESIGN ENGINEER A.P.E.				
CHIEF PROJECT ENGINEER				

HARVEY ALUMINUM
DIVISION OF
HARVEY MACHINE CO., INC. TOMBALL, CALIF.

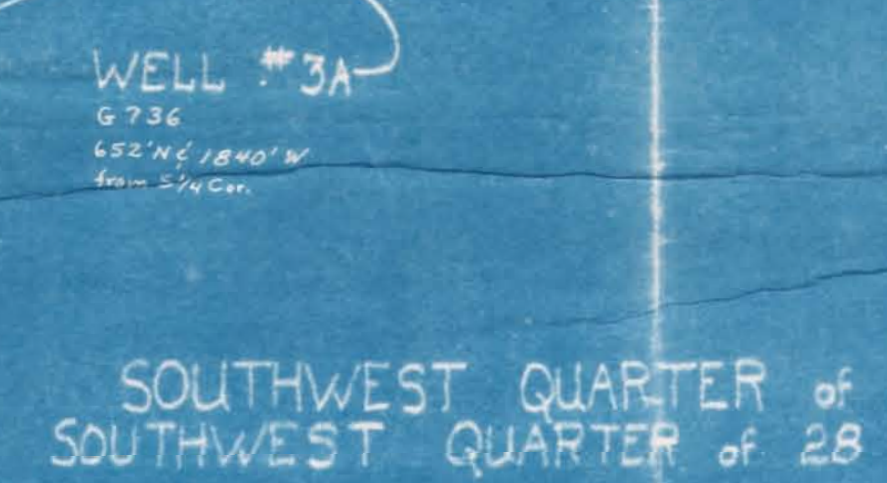
DATE: JAN 27, 1957
SCALE: 1" = 100'
DWG. NO. HAR-31
DRAWN BY: J. PERTLAND
CHECKED BY: W. W. WELLS
DATE: JAN 27, 1957



SCALE TO SECTION LINE

NORTHEAST QUARTER of
SOUTHWEST QUARTER of 28

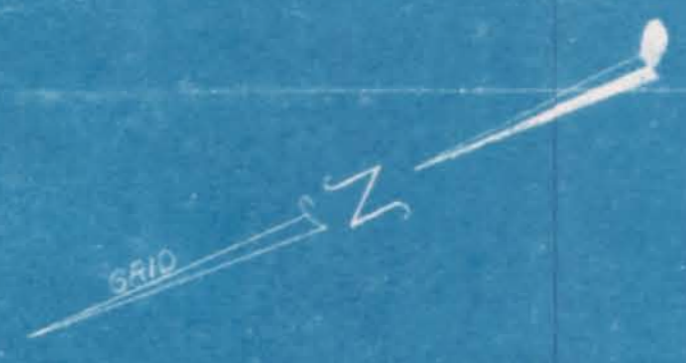
1942.45'
SOUTHEAST QUARTER of
SOUTHWEST QUARTER of 28



NORTHWEST QUARTER of 28

NORTHWEST QUARTER of
SOUTHWEST QUARTER of 28

SOUTHWEST QUARTER of
SOUTHWEST QUARTER of 28



Application Nos. G-734, G-735, G-736, G-737
Permit Nos. G-645, G-646, G-647, G-648

CONFIDENTIAL:
This document contains confidential information which is the property of this Company. Disclosure in any manner is expressly prohibited. Neither this document nor the information contained herein shall be duplicated, used or disclosed in whole or in part, nor be published for distribution, in any manner identifying the Company, without the written authorization of this Company.
This document contains information affecting the National Defense of the United States within the meaning of the Espionage Law, Title 18, U. S. C., Section 793 and 794. Its transmission or the revelation of its contents in any manner to an unauthorized person is prohibited by law.

NO.	REVISION	DATE	BY	APP'D.

APPROVED FOR CONSTRUCTION

ENGINEERING STAFF	INIT.	DATE
DESIGN ENGINEER		
CHIEF ELECTRICAL ENGINEER		
CHIEF PROCESS ENGINEER		
CHIEF DESIGN ENGINEER, A & E		
CHIEF PROJECT ENGINEER		

HARVEY ALUMINUM
DIVISION OF
HARVEY MACHINE CO., INC. TORRANCE, CALIF.
THE DALLES ALUMINUM REDUCTION
FACILITY —

DRAWING TITLE
WELL LOCATIONS

OWN BY: **J. SHERFRAND** SCALE: **1" = 100'**
DESIGNED: DWG. NO.:
CHECKED: DAR-**31**
DATE: **July 26, 1947**