

Application No. 87388
 Permit No. 87829
 Application No. 33908
 Permit No. 33777

RECEIVED
 FEB 3 1958
 STATE ENGINEER
 SALEM, OREGON

CONFIDENTIAL:
 This document contains confidential information which is the property of this Company. Disclosure in any manner is expressly prohibited, and if this document or the information contained herein shall be duplicated, used or disclosed in whole or in part, nor be published for distribution, in any manner identifying the Company without the written authorization of this Company.

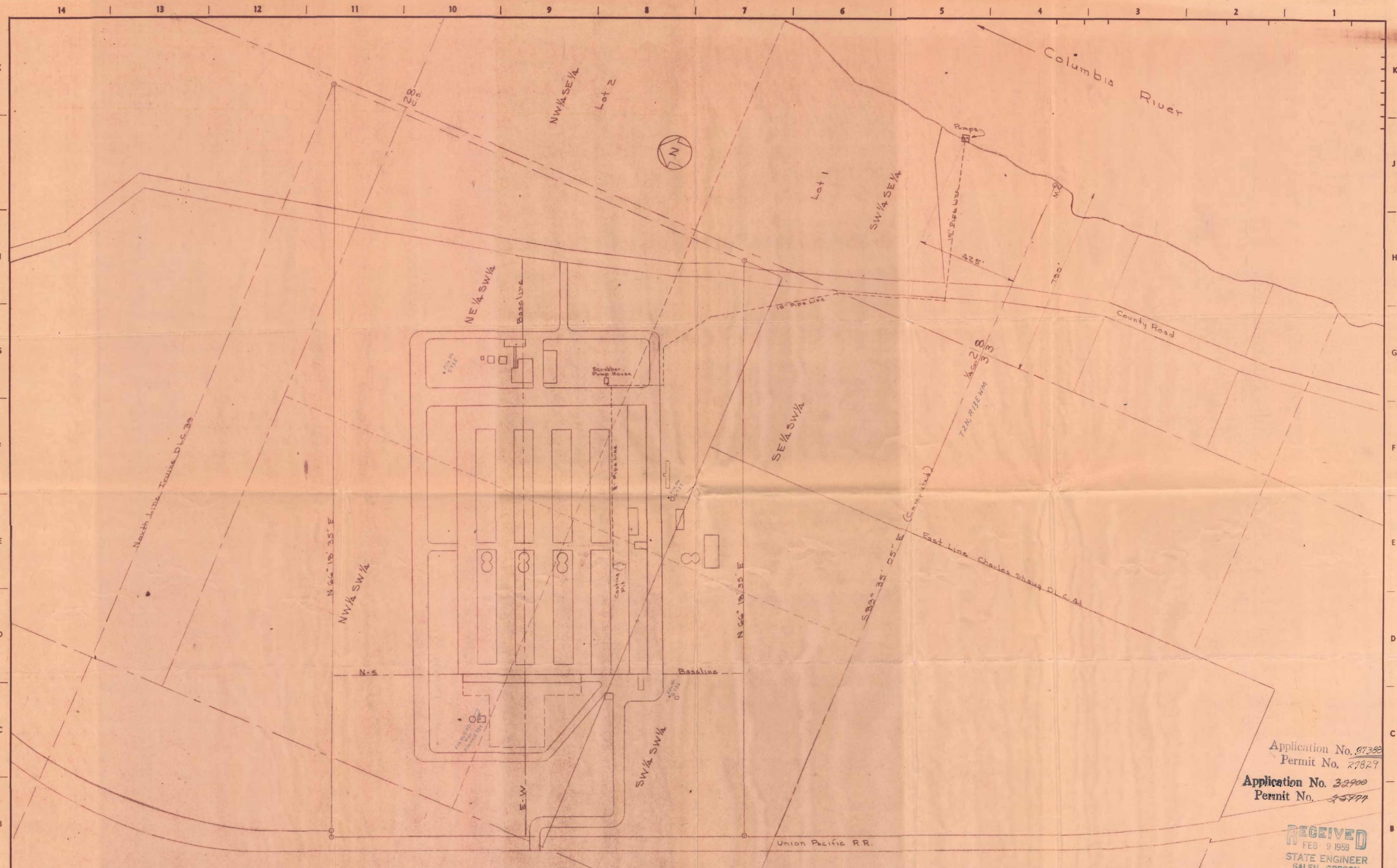
This document contains information affecting the National Defense of the United States within the meaning of the Espionage Laws, Title 18, U. S. C., Sections 793 and 794. Its transmission or the revelation of its contents in any manner to an unauthorized person is prohibited by law.

NO.	REVISION	DATE	BY	APPD.

APPROVED FOR CONSTRUCTION	
ENGINEERING STAFF	INIT. DATE
DESIGN ENGINEER	
CHIEF ELECTRICAL ENGINEER	
CHIEF PROCESS ENGINEER	
CHIEF DESIGN ENGINEER - A & E	
CHIEF PROJECT ENGINEER	

HARVEY ALUMINUM
 (INCORPORATED)
 TORRANCE, CALIFORNIA
 THE DALLES ALUMINUM REDUCTION
 FACILITY - River Pumping Station

DRAWING TITLE			
River Pumps & Pipe Line Location			
DATE	BY	SCALE	
2/2/58	EGS	1/4" = 200'	



Application No. 37388
 Permit No. 27829
 Application No. 32900
 Permit No. 25777

RECEIVED
 FEB 9 1959
 STATE ENGINEER
 SALEM, OREGON

CONFIDENTIAL:
 This document contains confidential information which is the property of this Company. Disclosure in any manner is expressly prohibited. Neither this document nor the information contained herein shall be duplicated, used or disclosed in whole or in part, nor be published for distribution, in any manner identifying the Company, without the written authorization of this Company.
 This document contains information affecting the National Defense of the United States within the meaning of the Espionage Law, Title 18, U. S. C., Section 793 and 794. Its transmission or the revelation of its contents in any manner to an unauthorized person is prohibited by law.

NO.	REVISION	DATE	BY	APP'D.

APPROVED FOR CONSTRUCTION		
	INIT.	DATE
ENGINEERING STAFF		
DESIGN ENGINEER		
CHIEF ELECTRICAL ENGINEER		
CHIEF PROCESS ENGINEER		
CHIEF DESIGN ENGINEER, A & E		
CHIEF PROJECT ENGINEER		

HARVEY ALUMINUM
 (INCORPORATED)
 TORRANCE, CALIFORNIA
 THE DALLES ALUMINUM REDUCTION
 FACILITY — River Pumping Station

DRAWING TITLE			
River Pumps & Pipe Line Location			
	INIT.	DATE	SCALE 1" = 200'
DEN. BY	EGS	2/2/59	DWG. NO.
CKD. BY			DAR-166
PROJ. ENG.			