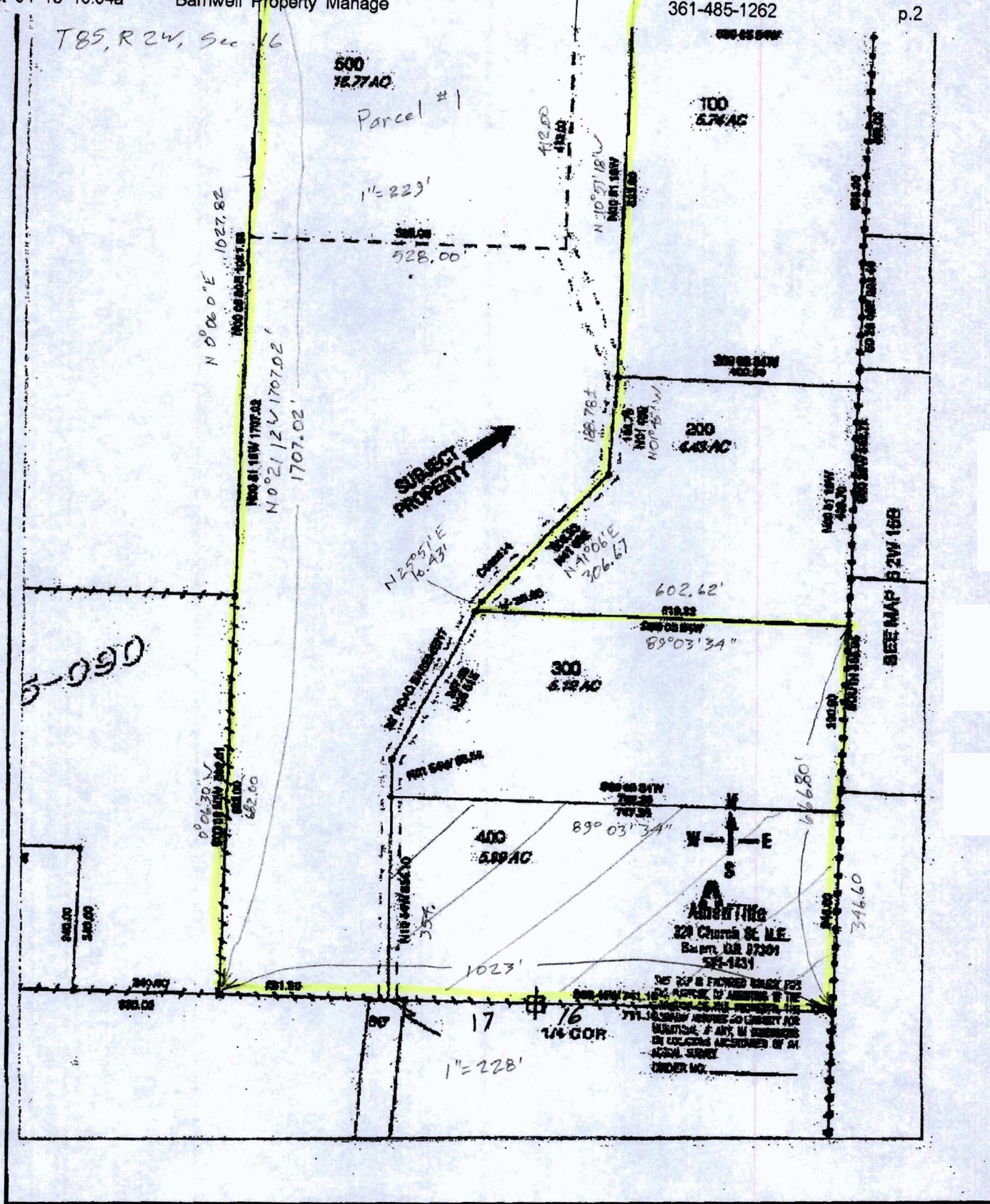


T85, R 2W, Sec 16



ADVERTISING
 229 Church St. N.E.
 Salem, OR 97301
 503-485-1262
 THIS MAP IS FINISHED UNDER THE
 SUPERVISION OF THE ENGINEER OF THE
 STATE OF OREGON AND IS SUBJECT TO THE
 PROVISIONS OF ANY LAWS OR ORDINANCES
 IN COLLISION HEREWITH OF AN
 OTHER STATE.
 ORDER NO.

RECEIVED BY OWRD

NOV 19 2013

SALEM, OR