

Map # 1

RECEIVED

DEC 06 2013

WATER RESOURCES DEPT
SALEM, OREGON



Map # 1

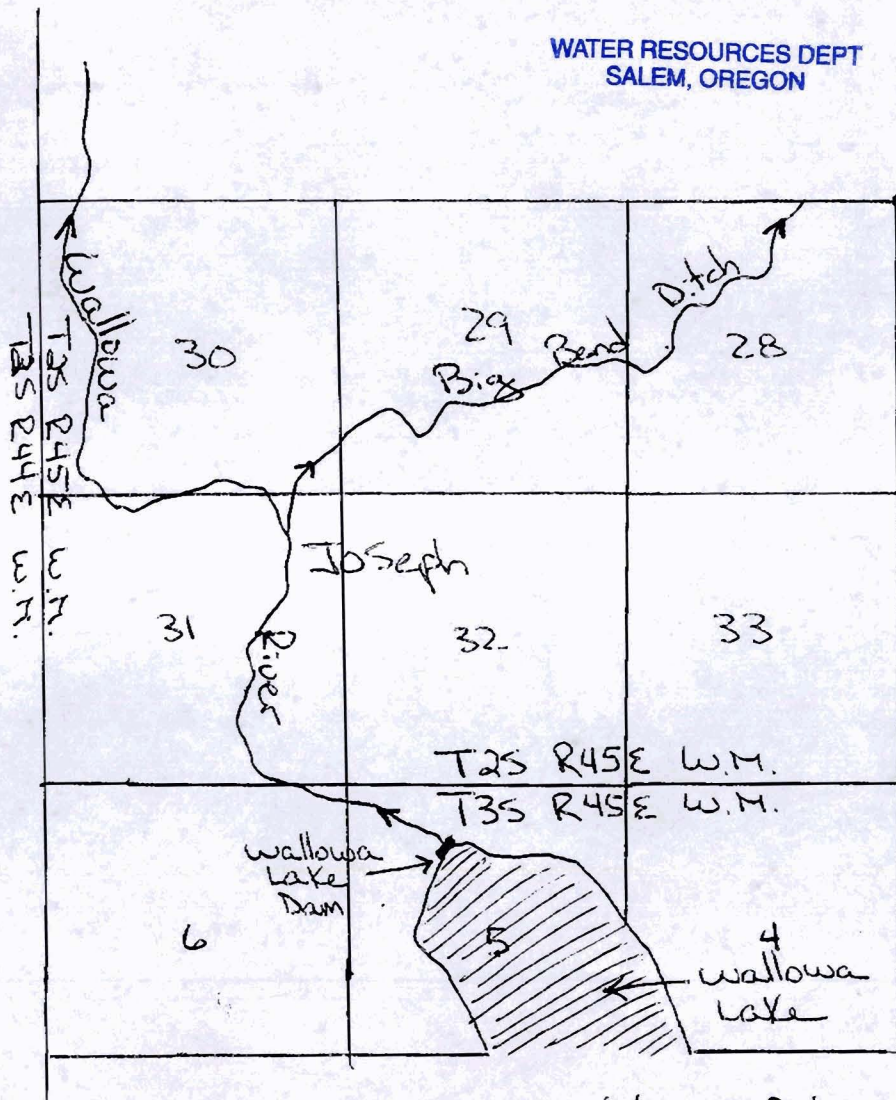
wallowa lake to
Big Bend Ditch Point
of Diversion on
wallowa River

Map # 2

Big Bend Ditch Point
of Diversion to
Area of use

Map # 3

Detail of Area of
use (old final
Proof Survey Map)



Scale: 1/2 inches =
1 mile

Wallowa Lake Dam is located 940 feet
South and 1500 feet east from the
N.W. Corner of Section 5.

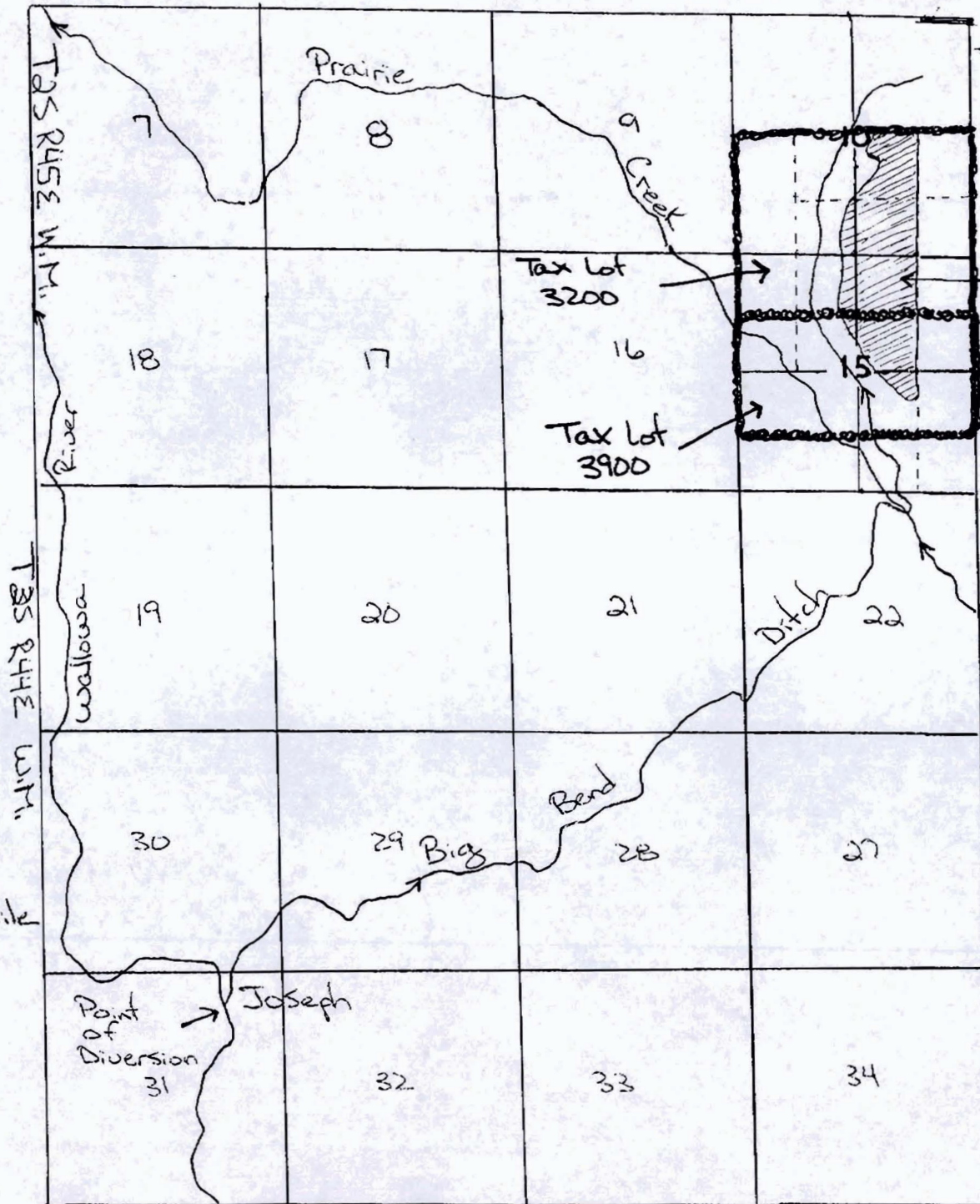
Map #2

RECEIVED

DEC 06 2013

WATER RESOURCES DEPT
SALEM, OREGON

Scale: 1 1/2 inches = 1 mile

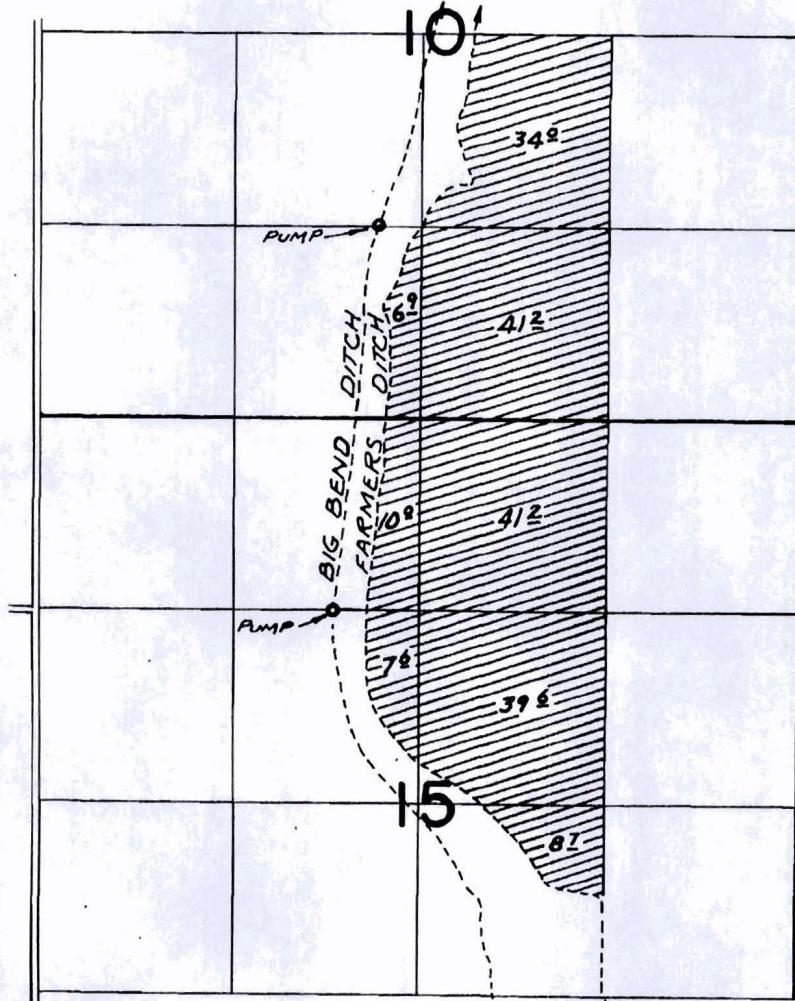


Detail of this
acreage found
on Final Proof
Survey Map
Dated 2/28/1976

11648-2

Map #3

T.2S.R.45E.W.M.



DIV. LOC: 550'S. & 800'W. FROM NE. COR. SEC. 31

FINAL PROOF SURVEY UNDER

RECEIVED BY OWRD

NOV 25 2013

SALEM, OR

Application No. 51724 Permit No. 38286
IN NAME OF

JIM PETTY

Surveyed SEPT. 28, 1976, by R. MUGKEN

BBA - 3MM-100

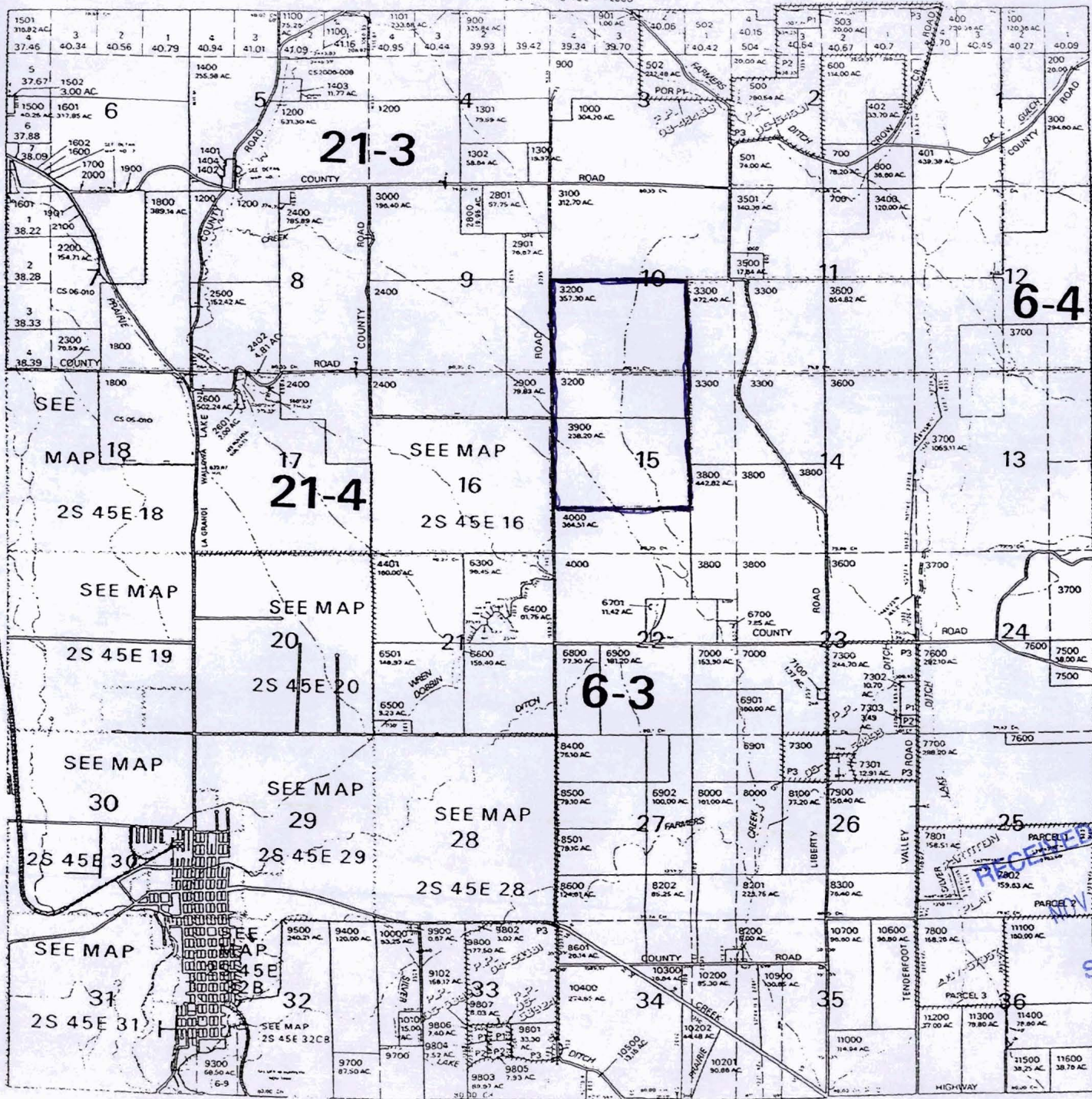
5-87944

THIS MAP WAS PREPARED FOR
ASSESSMENT PURPOSE ONLY

1.02S. R.45E. W.M.
WALLOWA COUNTY

SEE MAP 1S 45E 1 - 2000'

SCALE IN FEET
0 2000 4000



02S 45E
& INDEX

- CANCELLED NO.
- 2100
- 2401
- 2403
- 3701 thru
- 3706
- 4100 thru
- 4400
- 4500 thru
- 6207
- 6702
- 6703
- 7200
- 7400
- 8203
- 8700 thru
- 9101
- 9200
- 9600 thru
- 9606
- 10800
- 10901

SEE MAP 2S 44E

SEE MAP 2S 46E

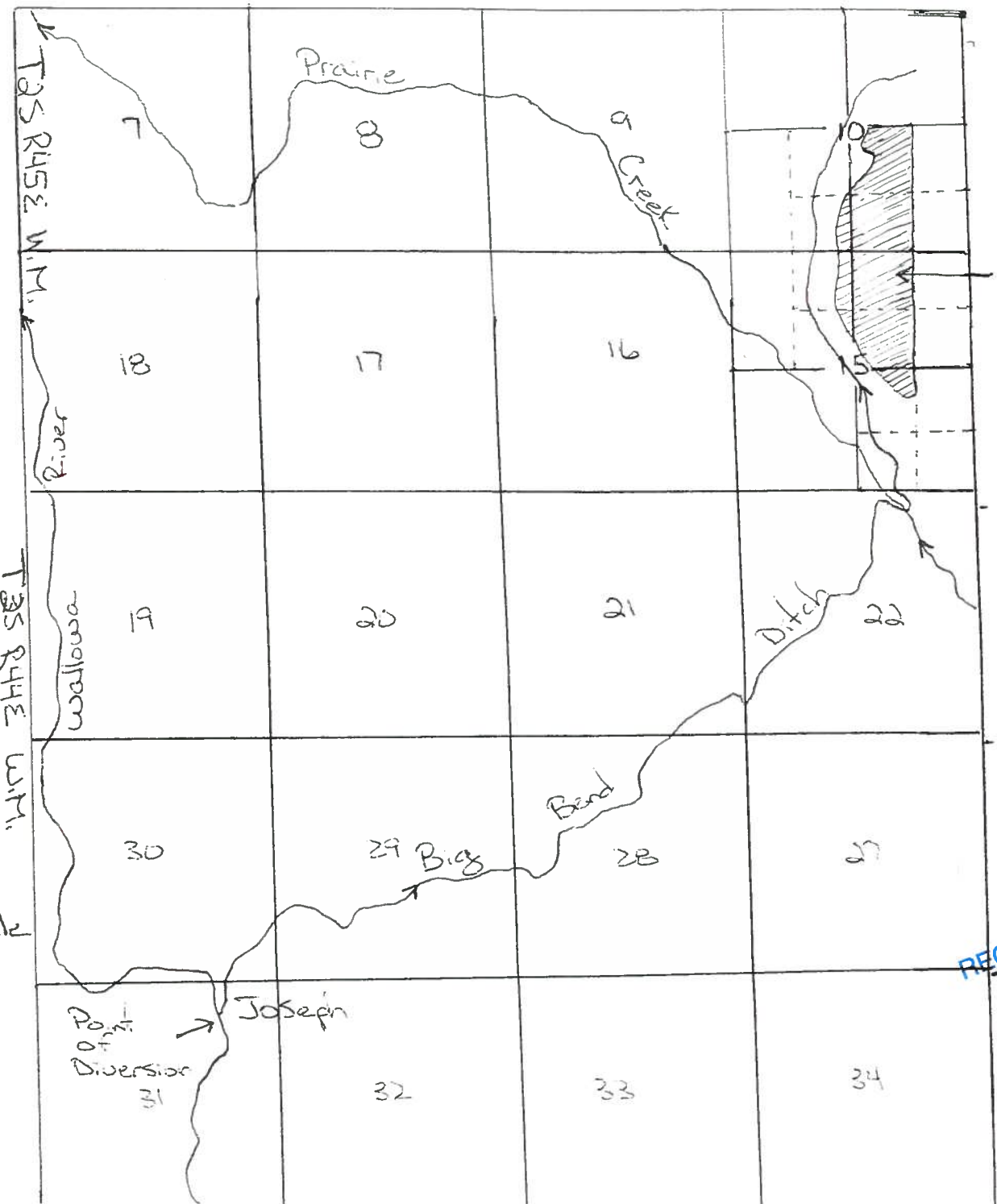
RECEIVED BY OWRD
MAY 25 2013
SALEM, OR

PRINTED ON
02/07/07
02S 45E
& INDEX

S-87944

SUPERSEDED BY 12/6/13

Map # 2



Detail of this acreage found on Final Proof Survey Map Dated 9/28/1976



Scale: 1 1/2 inches = 1 mile

RECEIVED BY OWRD
NOV 25 2013
SALEM, OR

S-87944

SUPERSEDED BY 12/6/13



Map # 1

Map # 1

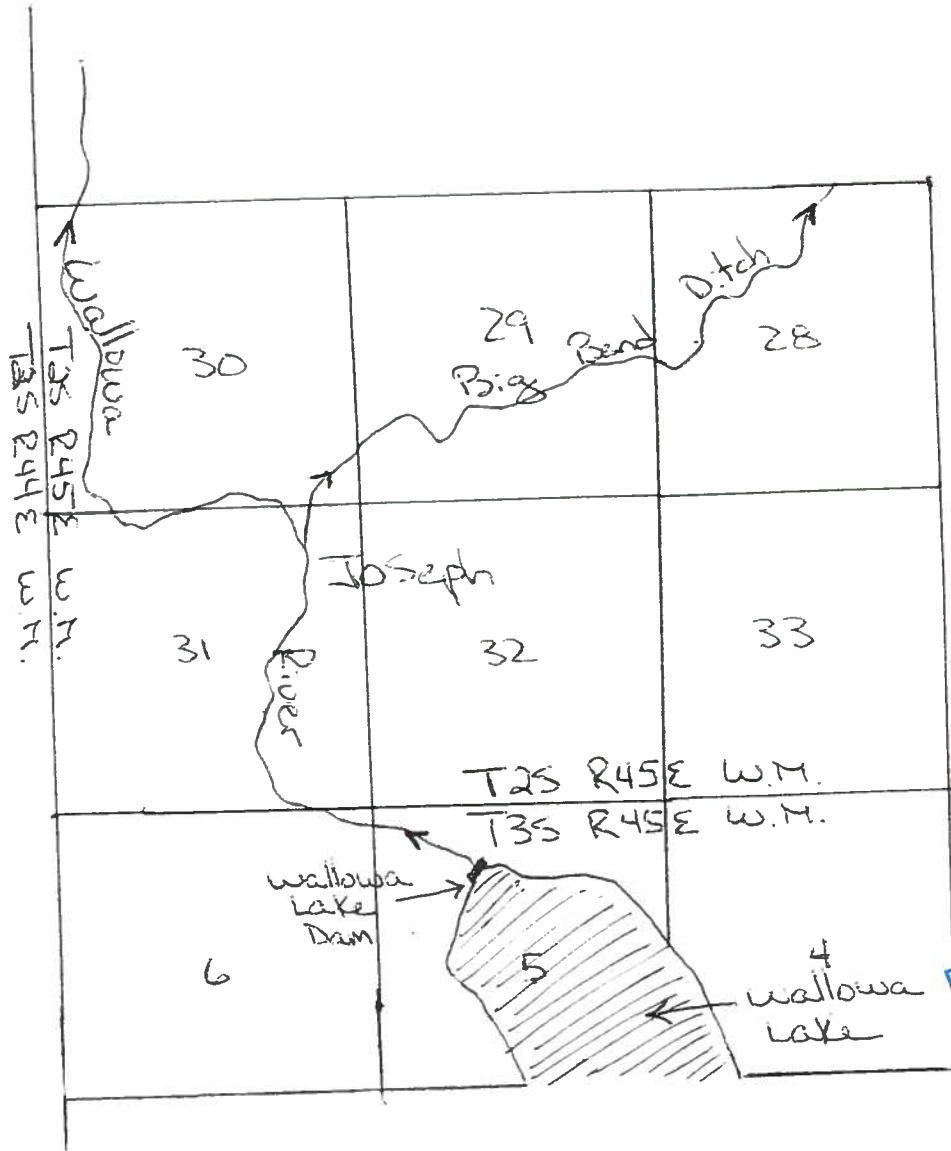
wallowa lake to
Big Bend Ditch Point
of Diversion on
wallowa River

Map # 2

Big Bend Ditch Point
of Diversion to
Area of use

Map # 3

Detail of Area of
use (old final
Proof Survey Map)



Scale: 1/4 inch =
1 mile

RECEIVED BY OWRD
NOV 25 2013
SALEM, OR