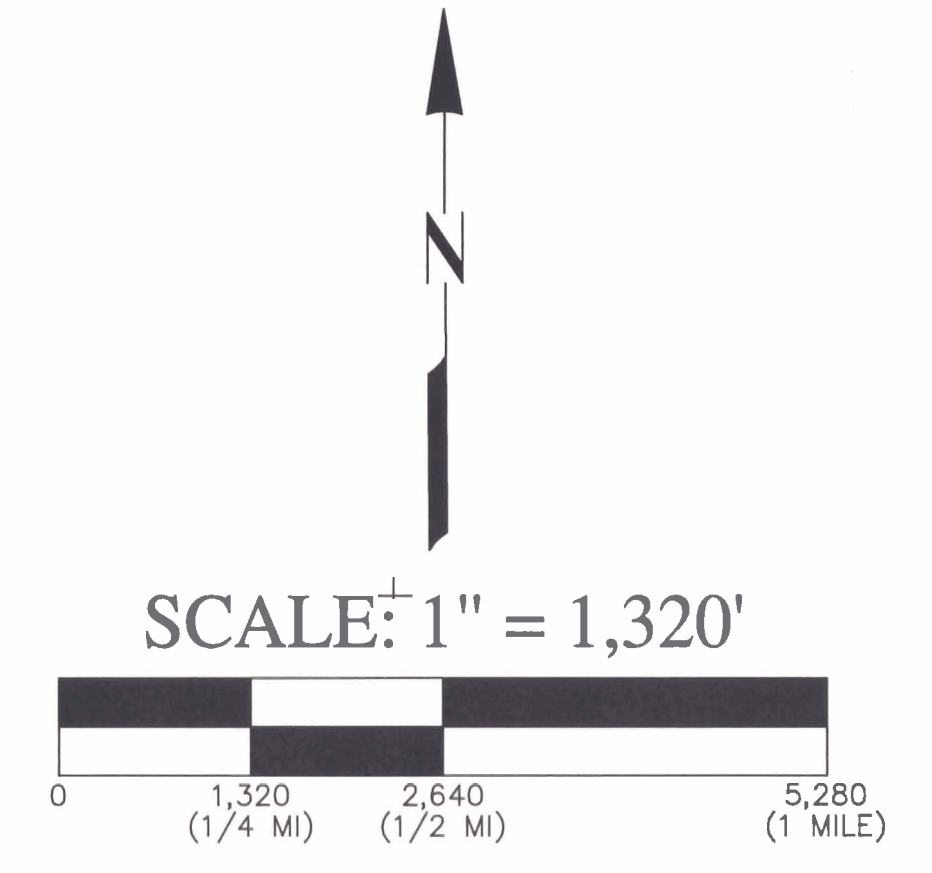
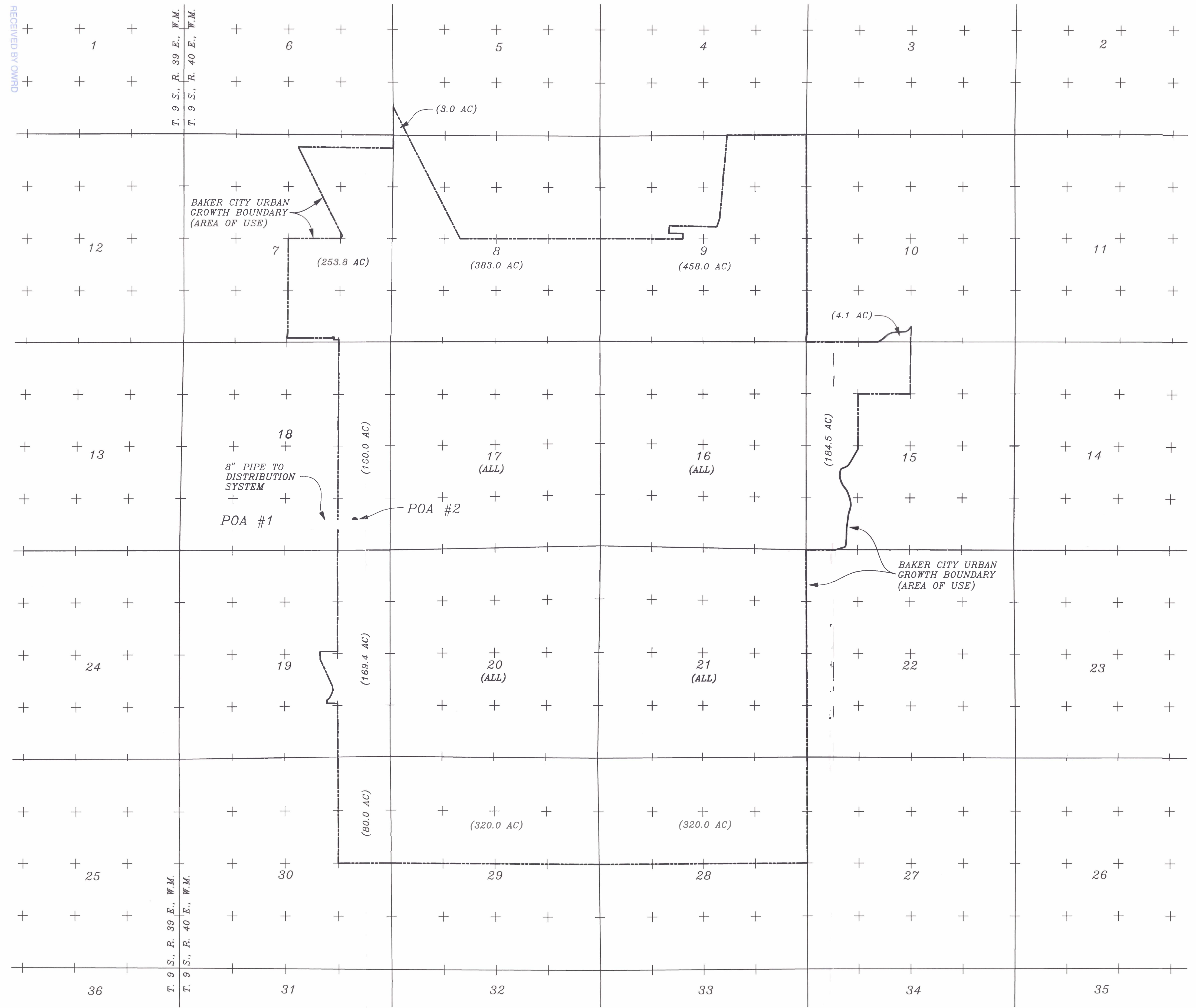


RECEIVED BY OWRD
DEC 06 2013

T. 9 S., R. 39 E., W.M.
T. 9 S., R. 40 E., W.M.

T. 9 S., R. 39 E., W.M.
T. 9 S., R. 40 E., W.M.



POA #1 ■
AN EXISTING WELL, COMMONLY REFERRED TO AS THE "PAUL HILL WELL", LOCATED 616 FEET NORTH AND 1,984 FEET WEST OF THE SOUTHEAST CORNER OF T9S, R40E, SECTION 18, W.M.

POA #2 ■
A PROPOSED WELL, THE ASSUMED LOCATION OF WHICH IS 760 FEET NORTH AND 900 FEET WEST OF THE SOUTHEAST CORNER OF T9S, R40E, SECTION 18, W.M.

AREA OF USE
THE AREA OF USE IS THE BAKER CITY MUNICIPAL WATER DISTRICT, THE LIMITS OF WHICH IS DEFINED AS THE URBAN GROWTH BOUNDARY FOR THE CITY OF BAKER CITY. THE APPROXIMATE NUMBER OF ACRES PER QUARTER/QUARTER FOR THE AREA OF USE IS:

SECTION 5 SW SW 3.0 AC	SECTION 15 NE NW 40.0 AC NW NW 40.0 AC SW NW 40.0 AC NW SW 32.2 AC NE NE 30.2 AC NW NE 19.3 AC SE NE 39.9 AC SW NE 7.8 AC NE SE 40.0 AC NW SE 40.0 AC SE SE 40.0 AC SW SE 36.6 AC	SECTION 20 NE NE 40.0 AC NW NE 40.0 AC SE NE 40.0 AC SW NE 40.0 AC NE NW 40.0 AC NW NW 40.0 AC SE NW 40.0 AC SW NW 40.0 AC NE SE 40.0 AC NW SE 40.0 AC SE SE 40.0 AC SW SE 40.0 AC	SECTION 7 NE NE 30.2 AC NW NE 19.3 AC SE NE 39.9 AC SW NE 7.8 AC NE SE 40.0 AC NW SE 40.0 AC SE SE 40.0 AC SW SE 36.6 AC	SECTION 16 NE NE 40.0 AC NW NE 40.0 AC SE NE 40.0 AC SW NE 40.0 AC	SECTION 8 NW NW 21.2 AC SE NW 3.7 AC SW NW 38.1 AC NE SE 40.0 AC NW SE 40.0 AC SE SE 40.0 AC NW SW 40.0 AC NE SW 40.0 AC NW SW 40.0 AC SE SW 40.0 AC SW SW 40.0 AC	SECTION 17 NE NE 40.0 AC NW NE 40.0 AC SE NE 40.0 AC SW NE 40.0 AC NE NW 40.0 AC NW NW 40.0 AC SE NW 40.0 AC SW NW 40.0 AC NE SE 40.0 AC NW SE 40.0 AC SE SE 40.0 AC SW SE 40.0 AC NE SW 40.0 AC NW SW 40.0 AC SE SW 40.0 AC SW SW 40.0 AC	SECTION 9 NE NE 40.0 AC NW NE 23.0 AC SE NE 40.0 AC SW NE 29.7 AC NE SE 5.3 AC NW SE 40.0 AC SE SE 40.0 AC SW SE 40.0 AC NE SW 40.0 AC NW SW 40.0 AC SE SW 40.0 AC SW SW 40.0 AC	SECTION 10 SE SW 4.1 AC	SECTION 18	SECTION 19	SECTION 21 NE NE 40.0 AC NW NE 40.0 AC SE NE 40.0 AC SW NE 40.0 AC NE NW 40.0 AC NW NW 40.0 AC SE NW 40.0 AC SW NW 40.0 AC	SECTION 24	SECTION 28 NE NE 40.0 AC NW NE 40.0 AC SE NE 40.0 AC SW NE 40.0 AC NE NW 40.0 AC NW NW 40.0 AC SE NW 40.0 AC SW NW 40.0 AC	SECTION 29 NE NE 40.0 AC NW NE 40.0 AC SE NE 40.0 AC SW NE 40.0 AC NE NW 40.0 AC NW NW 40.0 AC SE NW 40.0 AC SW NW 40.0 AC	SECTION 30 NE NE 40.0 AC SE NE 40.0 AC
----------------------------------	--	---	---	---	--	---	---	-----------------------------------	-------------------	-------------------	---	-------------------	---	---	---

TOTAL = 4,895.8 AC

8" PIPE TO DISTRIBUTION SYSTEM

REVISED:		
DESIGNED BY: D. SCHWIN		DWG SCALE: 1" = 1320'
DRAWN BY: D. SCHWIN	DWG DATE: October 28, 2013	JOB NUMBER:
REVIEW BY:		ACAD FILE: E:\CAD\WaterWells\Paul Hill water right app.dwg

BAKER CITY, OREGON
OFFICE OF TECHNICAL SERVICES

31