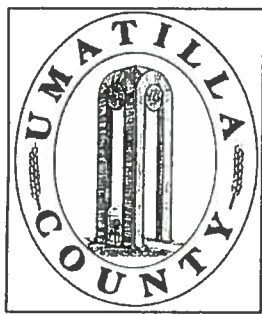


Assessment and Taxation
been prepared for
ing purposes.



NE1/4 SEC 33 T4N R37E UMATILLA COUNTY, C

SCALE: 1" = 200

RECEIVED

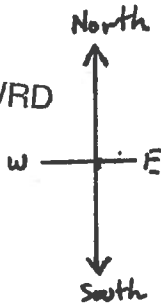
AUG 05 2013

WATER RESOURCES DEPT
SALEM, OREGON

RECEIVED BY OWRD

OCT 12 2012

SALEM, OR



Cold Spring: 450' S, 780' E

Lot # 1102: Lenny Leen, Section 28, SWSE

House: 450' N, 155' E
10,000 gal water storage: 400' N, 155' E

Lot # 1100: Larry Leen, Section 28, SWSE

House: 100' N, 500' E
10,000 gal water storage (in garage): 135' N, 535' E

Lot # 1000: Mark (deceased 8/15/12) & Barbara Warner
Section 33, NWNE

Cabin: 220' S, 420' E
10,000 gal water storage: 250' S, 420' E

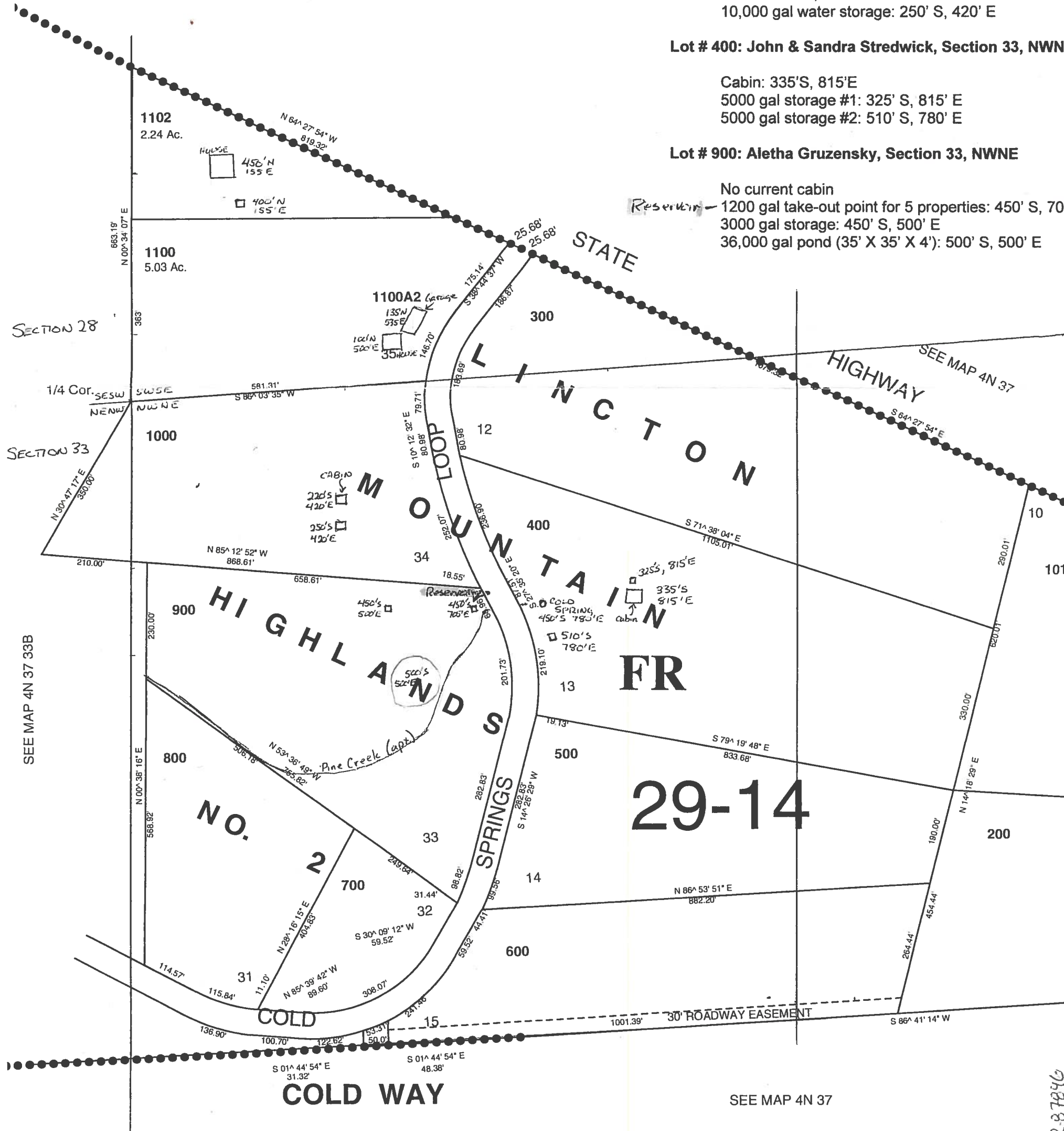
Lot # 400: John & Sandra Stredwick, Section 33, NWN

Cabin: 335' S, 815' E
5000 gal storage #1: 325' S, 815' E
5000 gal storage #2: 510' S, 780' E

Lot # 900: Aletha Gruzensky, Section 33, NWNE

No current cabin
Reservoir - 1200 gal take-out point for 5 properties: 450' S, 700' E
3000 gal storage: 450' S, 500' E
36,000 gal pond (35' X 35' X 4'): 500' S, 500' E

22078-5



SEE MAP 4N 37

R-37846

4N12733A