

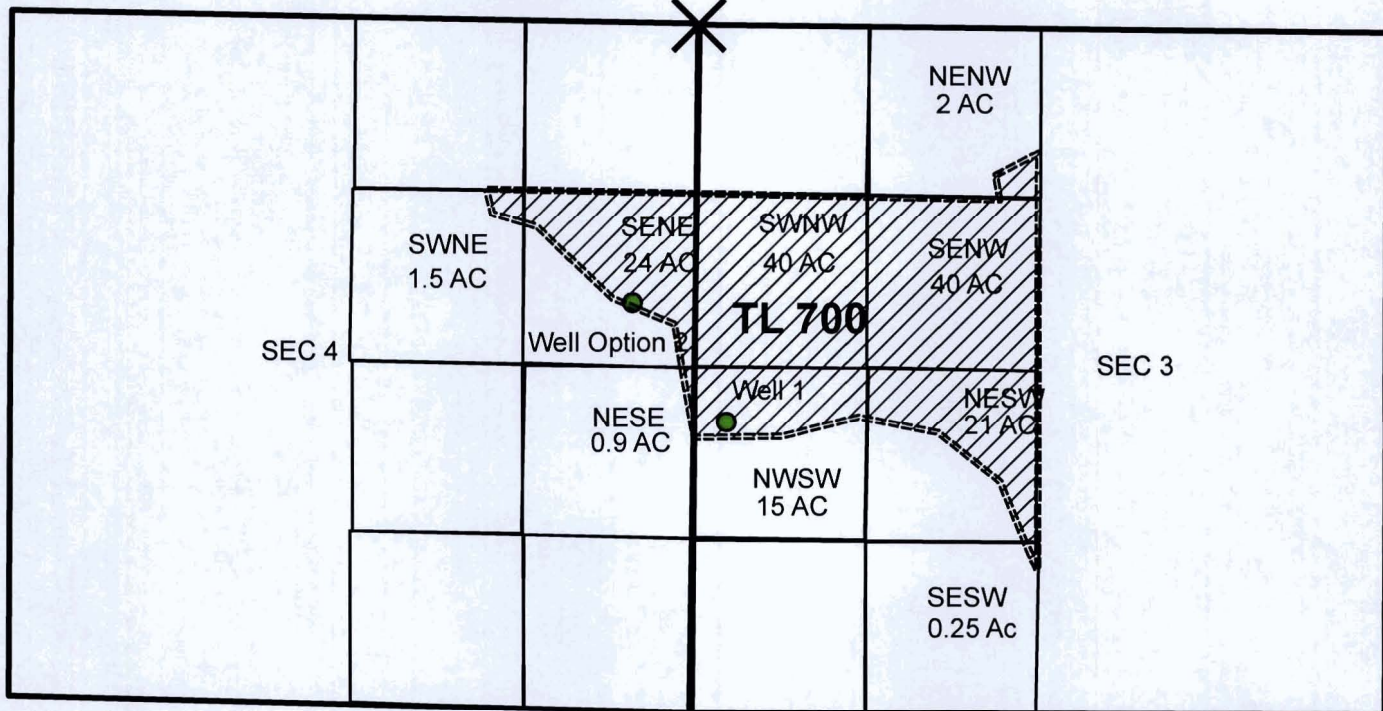
N



McElligott Ground Water Application

07S 39E W.M. Sections 3 & 4 Tax Lot 700

Reference Corner



RECEIVED BY OWRD

JAN 02

SALEM, OR

0 660 1,320 Feet

Legend

● Well locations ===== Property Line

Supplemental Irrigation Area

× Reference Corner

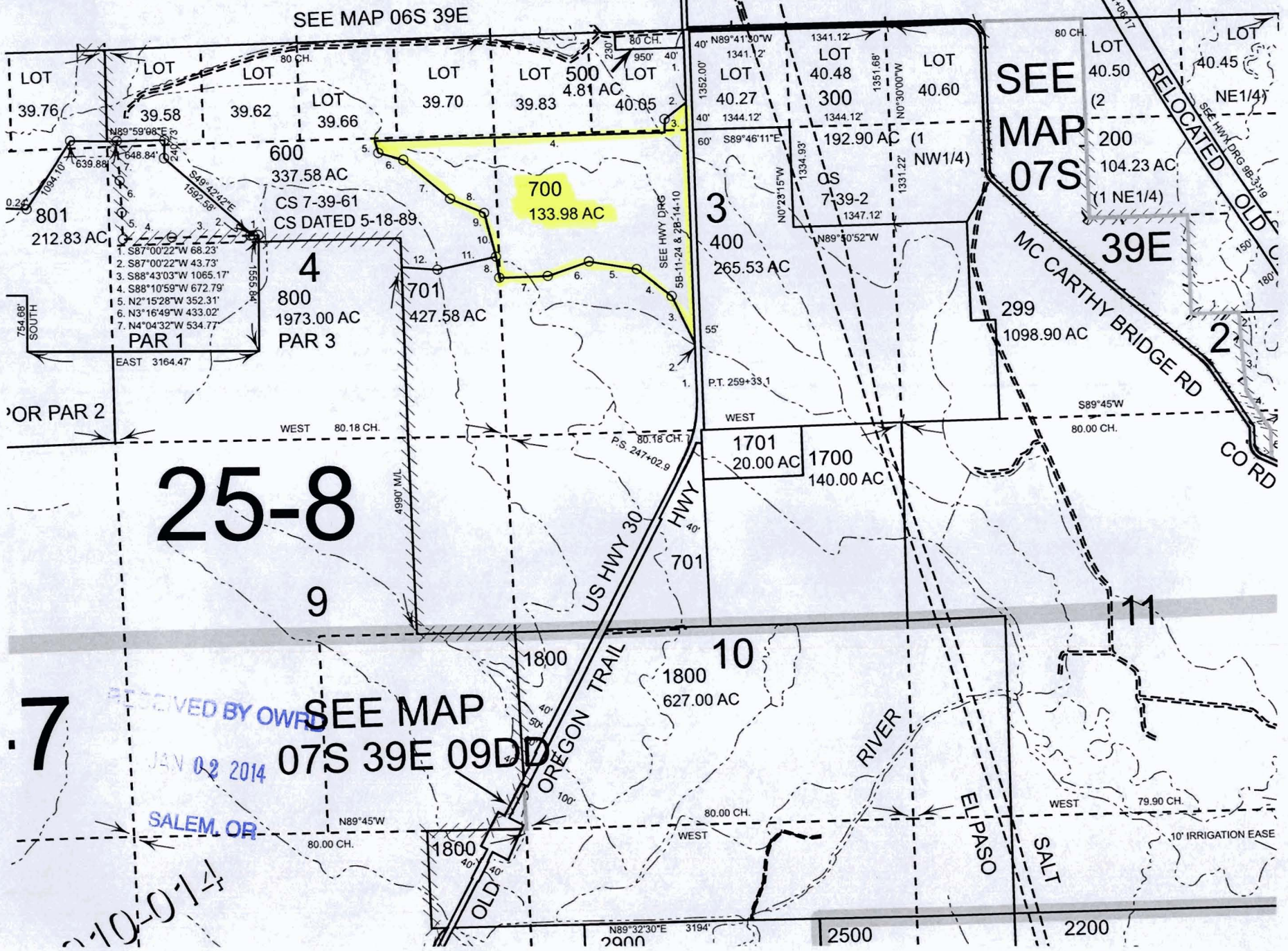
POA: Well 1 located 3100' South and 240' East from the NW Corner, Section 3

POA: Well Option 2 located 2180' South and 480' West from the NE Corner, Section 4

T.7S. R.39E. W.M.
BAKER COUNTY
1" = 2000'

4,000 Feet

G-17748



25-8

7

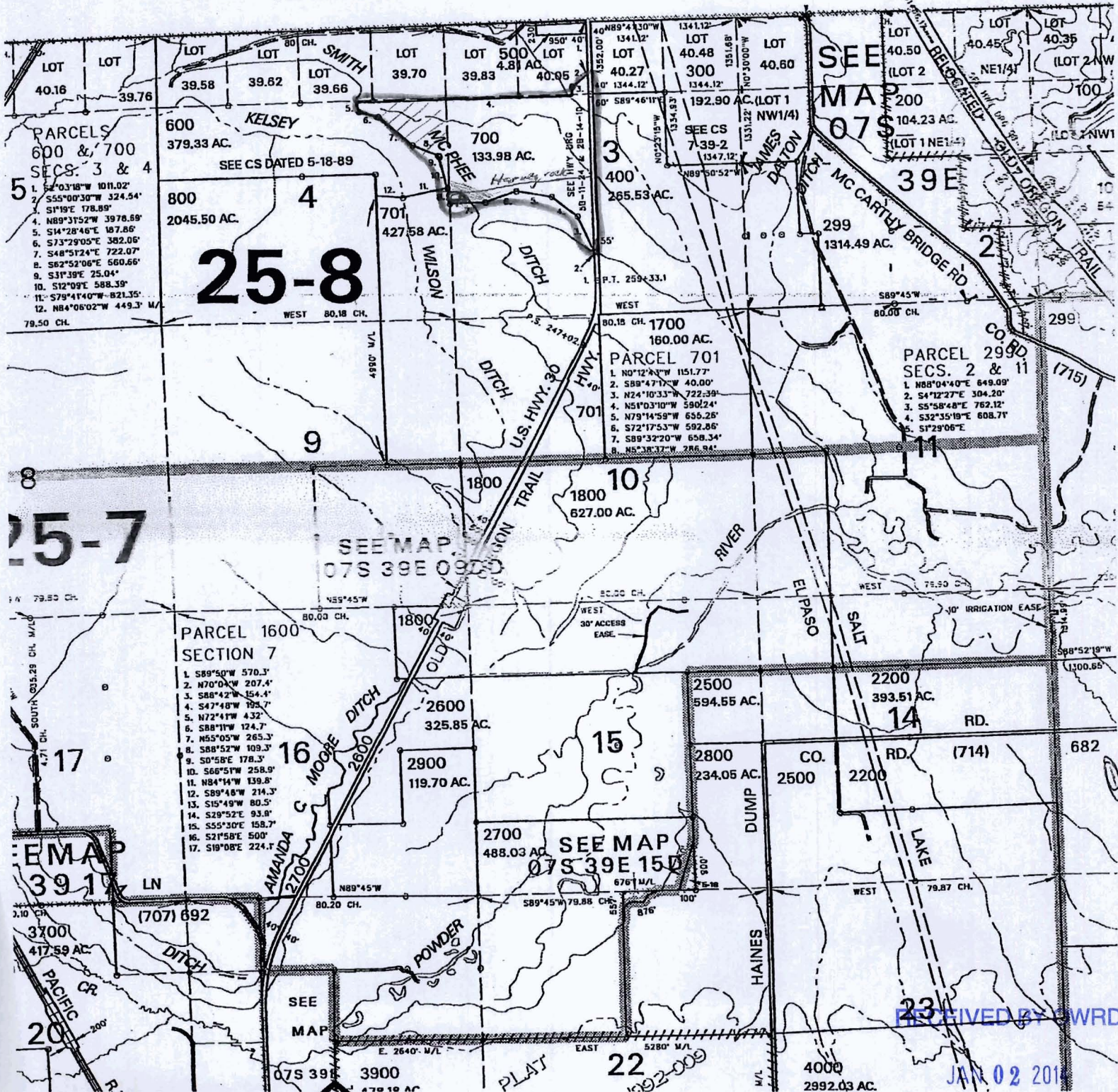
RECEIVED BY OWR
JAN 02 2014
SALEM, OR

SEE MAP
07S 39E 09DD

10-0-14

Elkhorn Title Company

SEE MAP 000 000



RECEIVED BY DWRD

JAN 02 2010

SALEM, OR

Map # 739
Order # 16665

This sketch is for location purposes only, and no warranties are implied as to variations, if any, in dimensions or location as revealed by an accurate survey.