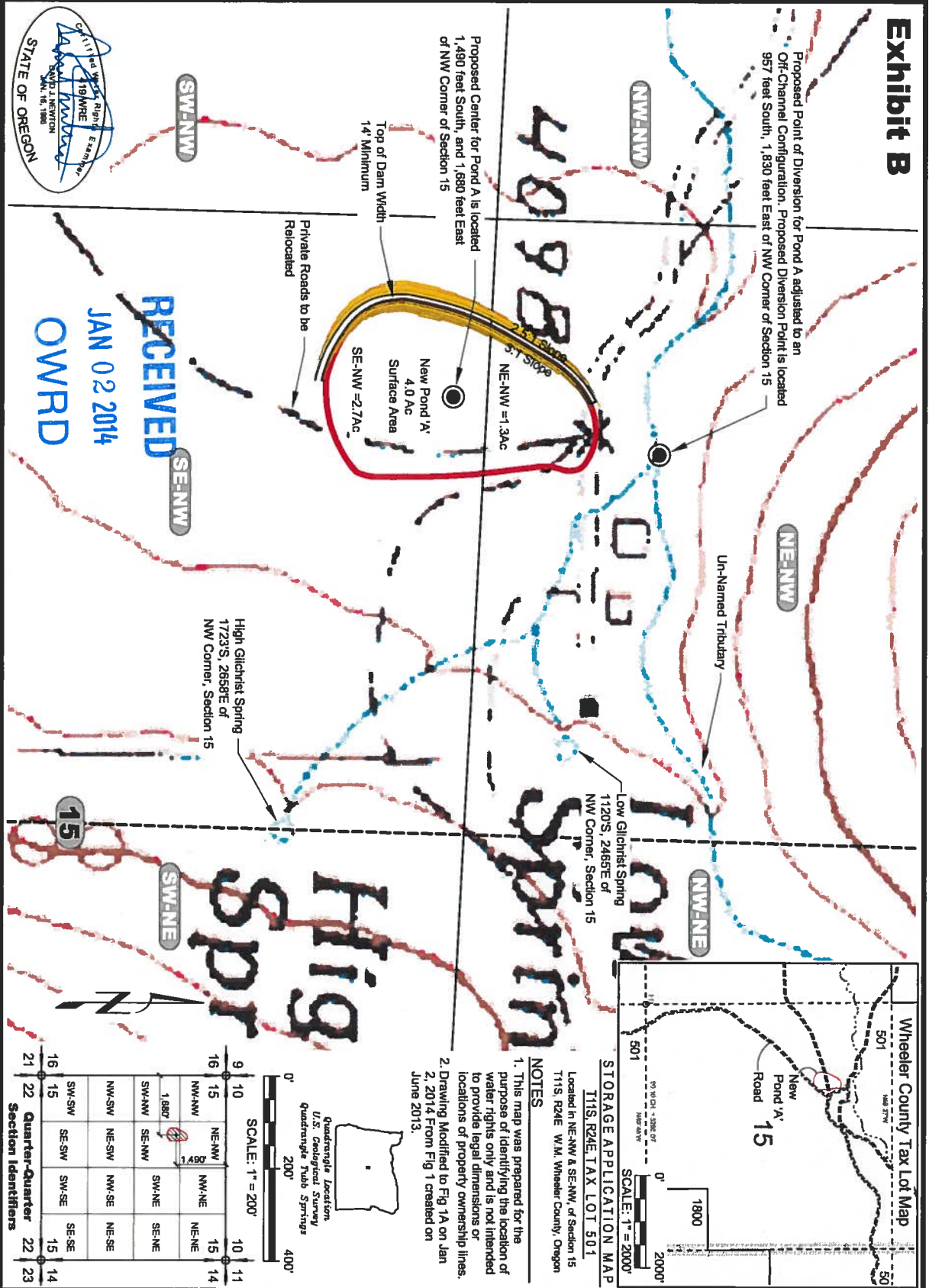
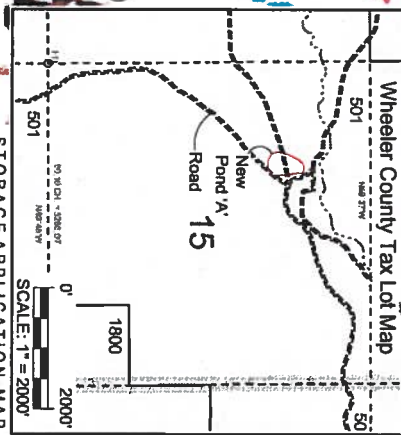


Exhibit B



RECEIVED
 JAN 02 2014
 OWRD



STORAGE APPLICATION MAP
 T11S, R24E, TAX LOT 501
 Located in NE-NW & SE-NW, of Section 15
 T11S, R24E W.M. Wheeler County, Oregon

- NOTES**
1. This map was prepared for the purpose of identifying the location of water rights only and is not intended to provide legal dimensions or locations of property ownership lines.
 2. Drawing Modified to Fig 1A on Jan 2, 2014 From Fig 1 created on June 2013.

Quadrangle Location
 U.S. Geological Survey
 Quadrangle Title Springs

SCALE: 1" = 200'

9	10	10	11
16	15	14	14
16	15	14	14
21	22	22	23

Section Identifiers

NW-NW	NE-NW	NW-NE	NE-NE
SW-NW	SE-NW	SW-NE	SE-NE



Pond 'A' - Storage Application Map - R87489
 Addition of Point of Diversion
 4-DSD, LLC
 Waterman Flat, Wheeler County, Oregon

DESIGNED BY: D.Newton	DRAWN BY: S.Schenck	DATE: JAN 2014	PROJECT NO. 1063-102	FIGURE 1A
--------------------------	------------------------	-------------------	-------------------------	--------------