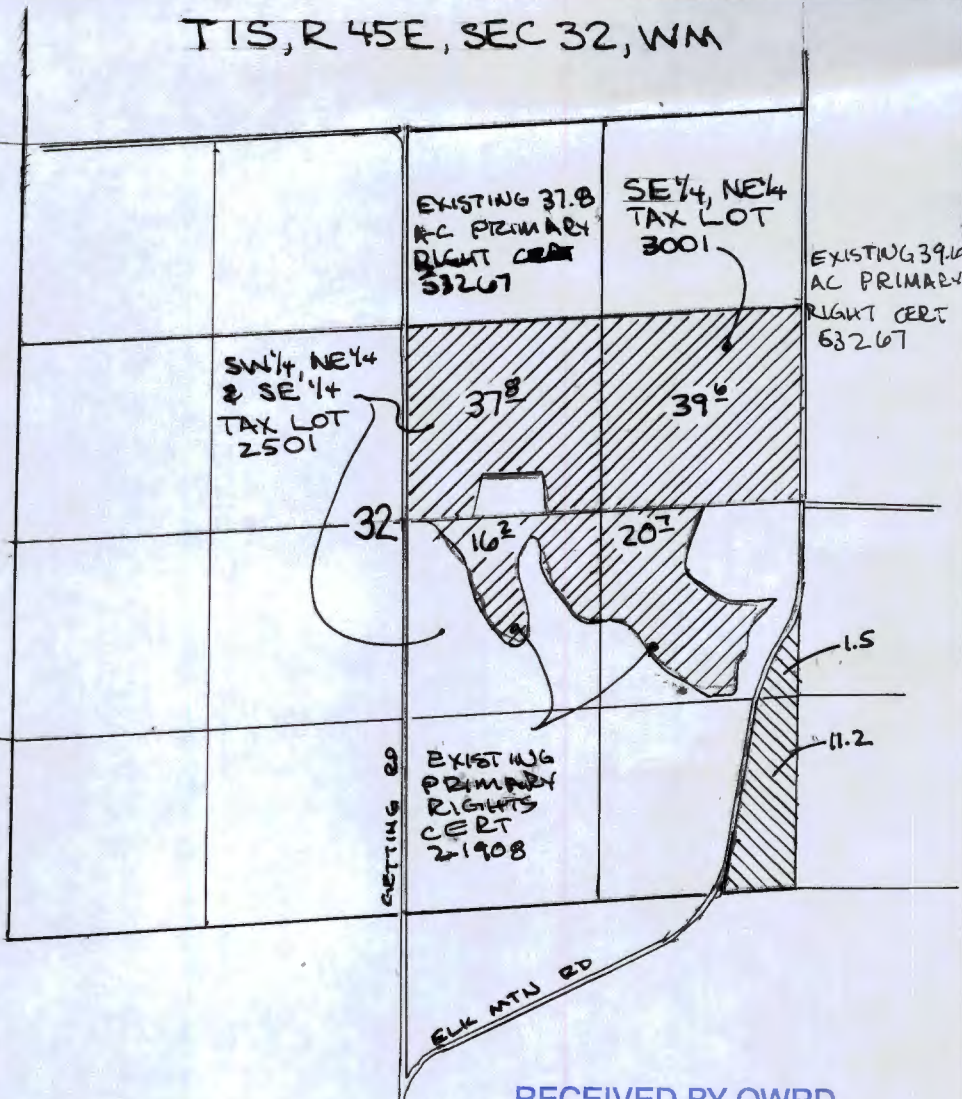


T15, R45E, SEC 32, WM



1" = 1320'

T15, R45E, SEC 32





RECEIVED BY OWRD

JAN 27 2014

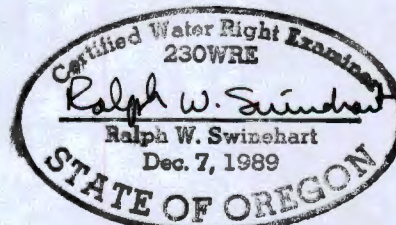
SALEM, OR

POINT OF DIVERSION FOR FARMERS DITCH IS WALLONA LAKE DAM, 940' S, 1500' E FROM THE NW CORNER OF SEC 5, T35, R45E, W.M.

-  LAND REQUESTING PRIMARY STORED WATER RIGHTS, 12.7 AC
-  LAND REQUESTING SUPPLEMENTAL STORED WATER RIGHTS

SOURCE OF WATER IS WATER STORED IN WALLONA LAKE UNDER R-347, CERTIFICATE 9310, PRIORITY DATE 1/9/1915

THIS MAP IS BASED ON USGS QUAD MAP AND PREVIOUS WATER RIGHTS, IT IS PREPARED FOR WATER RIGHT PURPOSES ONLY AND SHOULD NOT BE USED FOR PROPERTY LOCATION PURPOSES



WATER RIGHT APPLICATION MAP FOR: VZ FARMS ENTERPRISE, OREGON

PREPARED BY: WALLONA MOUNTAIN ENGINEERING PO BOX 266 ENTERPRISE, OREGON

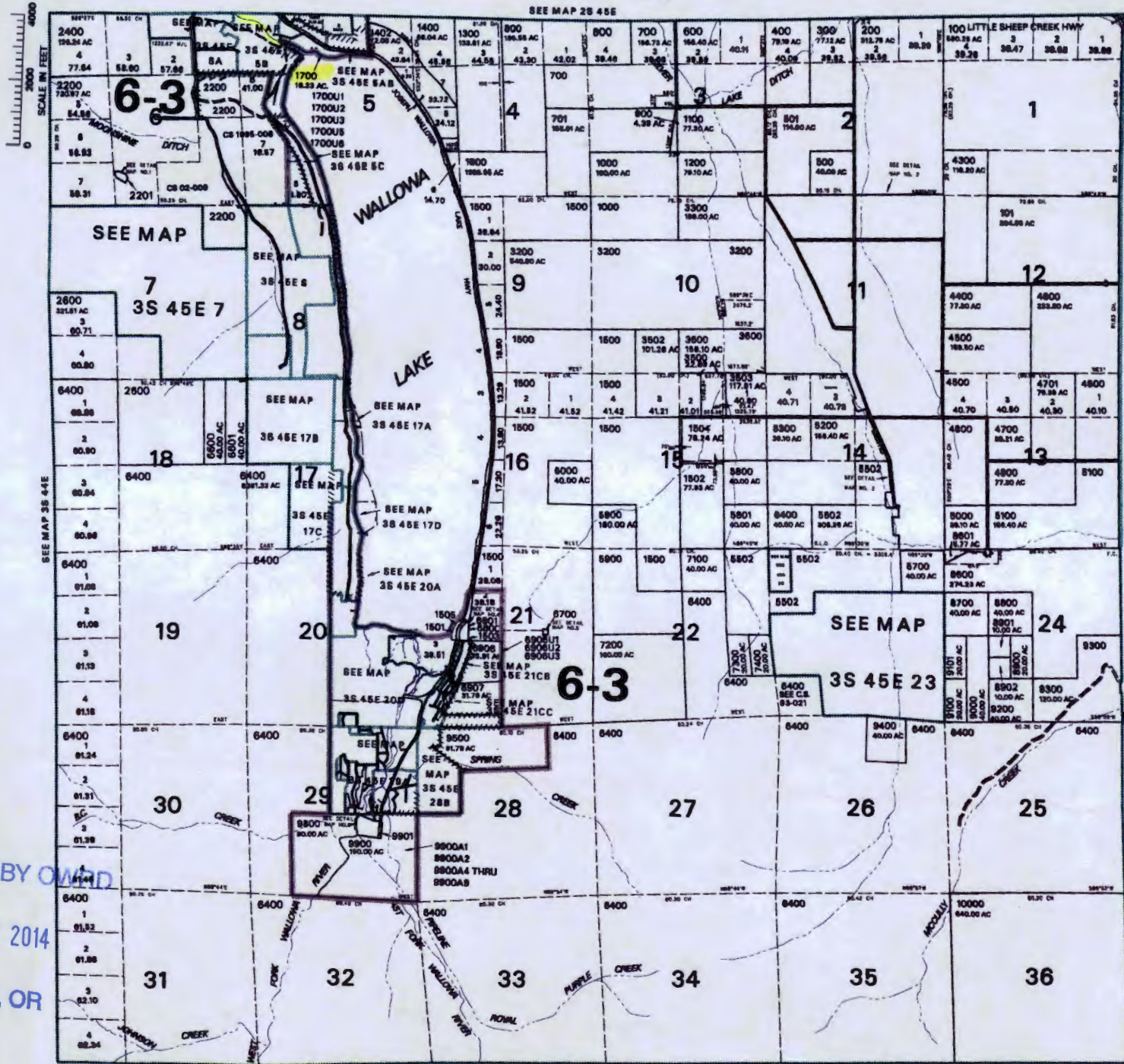
JAN 2014

THIS MAP WAS PREPARED FOR ASSESSMENT PURPOSE ONLY

T.03S. R.45E. W.M. WALLOWA COUNTY

1"=2000'

SEE MAP 28 45E



03S 45E & INDEX

- CANCELLED NO.
- 1700U4
 - 1701U1 THRU
 - 1700U8
 - 1701U8
 - 1701U8
 - 1800
 - 1800 THRU
 - 1802
 - 3000 THRU
 - 3012
 - 2098
 - 2100
 - 2300
 - 2700 THRU
 - 2738
 - 2800 THRU
 - 2808
 - 2800 THRU
 - 3108
 - 3804
 - 4000
 - 4101
 - 4303
 - 5101
 - 5101
 - 6100 THRU
 - 6107
 - 6200 THRU
 - 6203
 - 6300 THRU
 - 6313
 - 6800 THRU
 - 6802
 - 6900 THRU
 - 6905
 - 7000 THRU
 - 7002
 - 7500 THRU
 - 8500
 - 8502
 - 8502
 - 8601 THRU
 - 8609
 - 8600
 - 8700 THRU
 - 8702

RECEIVED BY OWA/D
 JAN 27 2014
 SALEM, OR

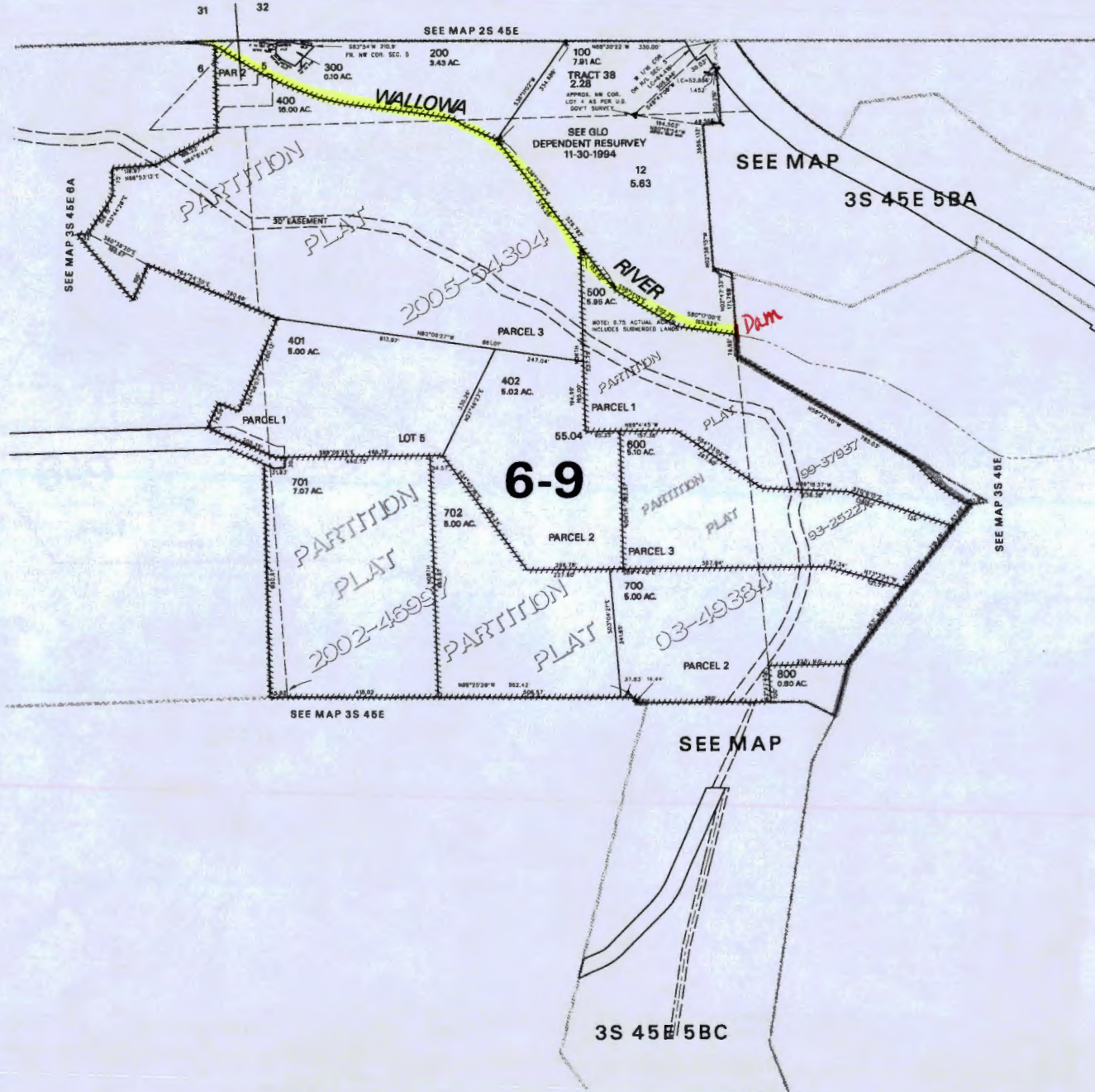
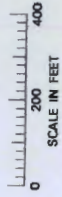
PRINTED ON
 03/22/12
 03S 45E
 & INDEX

THIS MAP WAS PREPARED FOR
ASSESSMENT PURPOSE ONLY

NW1/4 SECTION 05 T.03S. R.45E. W.M.
WALLOWA COUNTY

1"=200'

03S 45E 05B
& INDEX



RECEIVED BY OWRD
JAN 27 2014
SALEM, OR

PRINTED ON
09/20/08
03S 45E 05B
& INDEX

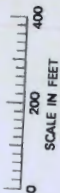
THIS MAP WAS PREPARED FOR ASSESSMENT PURPOSE ONLY

NE1/4 SECTION 06 T.03S. R.45E. W.M. WALLOWA COUNTY

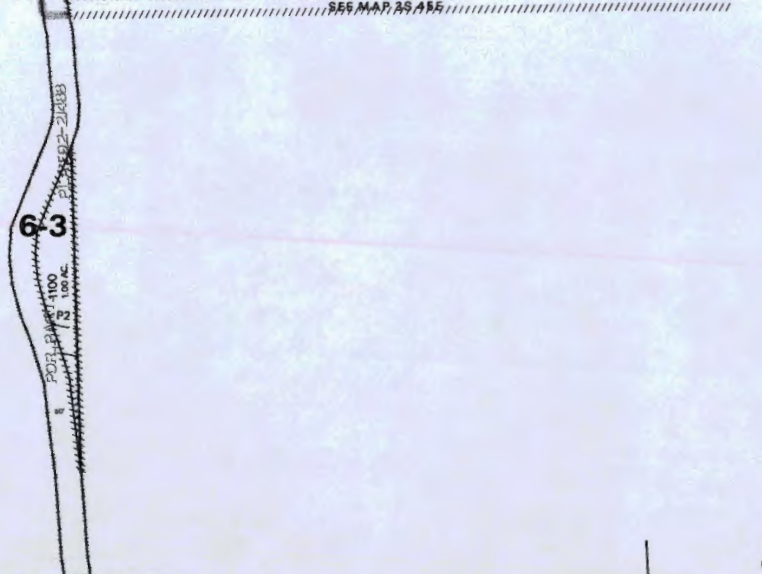
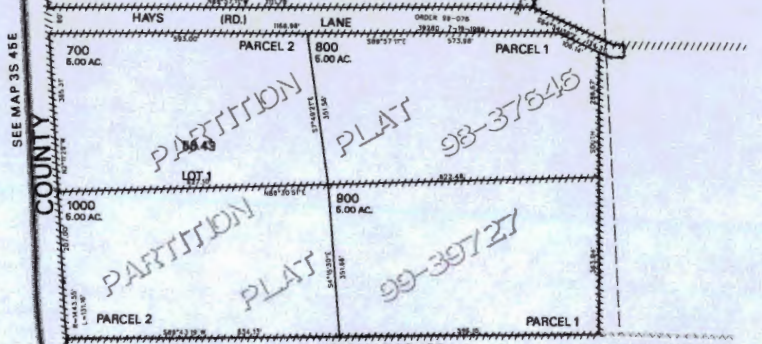
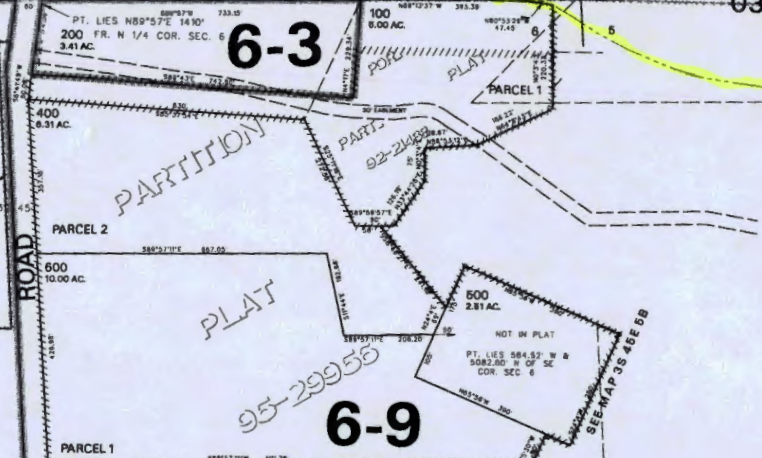
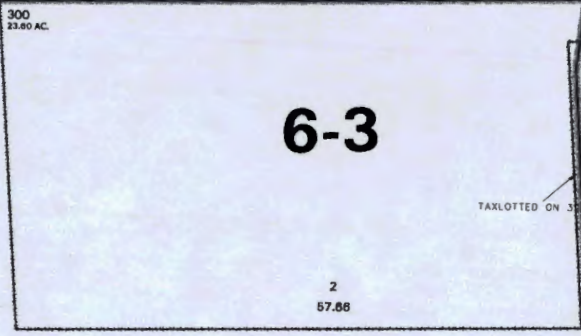
1/4 COR.

SEE MAP 2S 46E 31 1"=200'

03S 45E 06A



SEE MAP 3S 45E



SEE MAP 3S 48E

PRINTED ON 06/20/07
03S 45E 06A

RECEIVED BY OWRD

JAN 27 2014

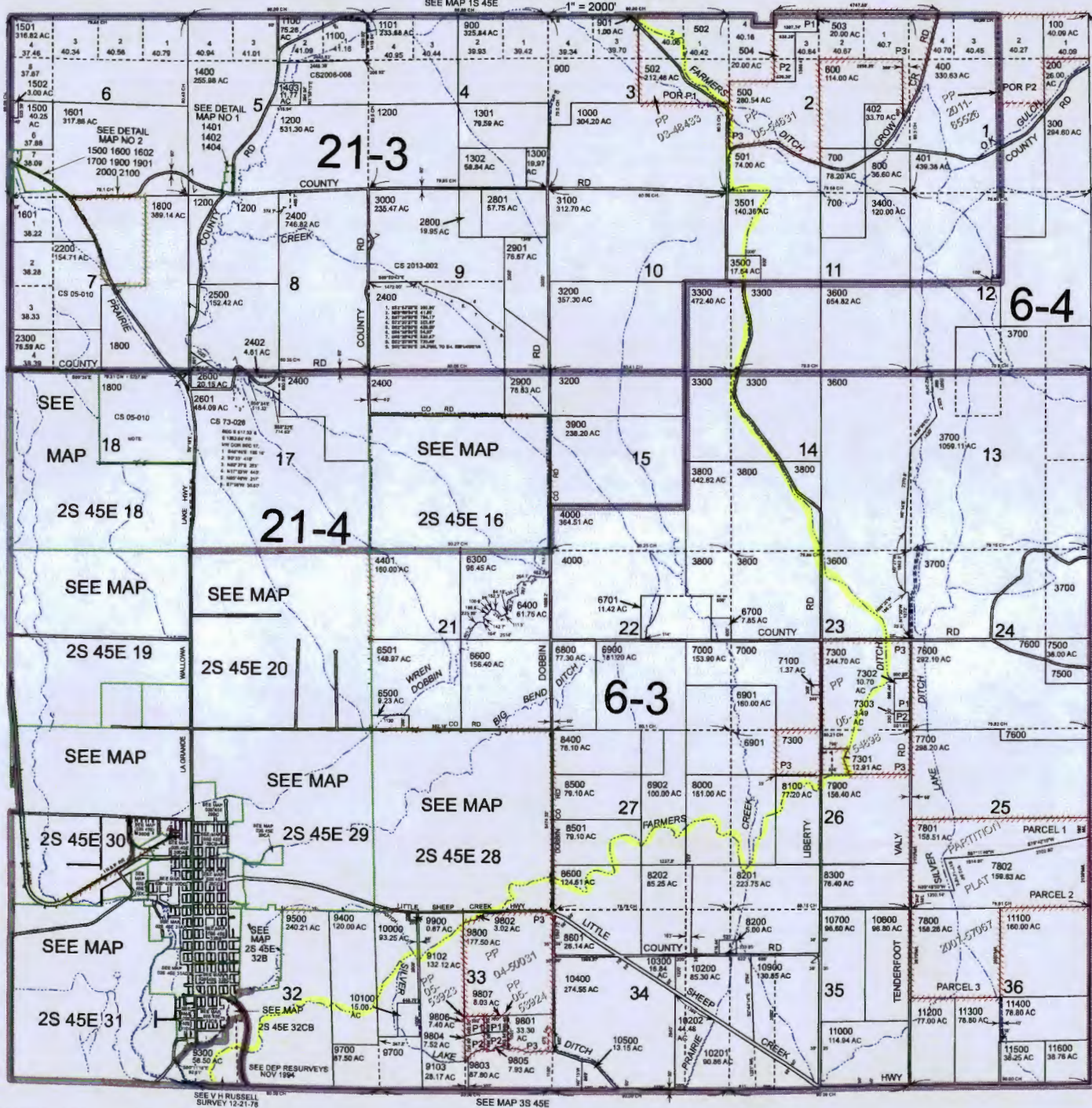
SALEM, OR

THIS MAP WAS PREPARED FOR ASSESSMENT PURPOSE ONLY

0 1,000 2,000 3,000 4,000 Feet

T.2S. R.45E. W.M. WALLOWA COUNTY

02S45E & INDEX



Cancelled
 2401
 1404
 1402
 1600
 1602
 1700
 1800
 1901
 2000
 2100
 2403
 3701 thru
 3706
 4100 thru
 4400
 4500 thru
 6207
 6702
 6703
 7200
 7400
 8203
 8700 thru
 9101
 9200
 9800 thru
 9806
 10800
 10901

RECEIVED BY OWRD

JAN 27 2014

SALEM, OR

Revised: DBJ 09/04/2013

& INDEX 02S45E

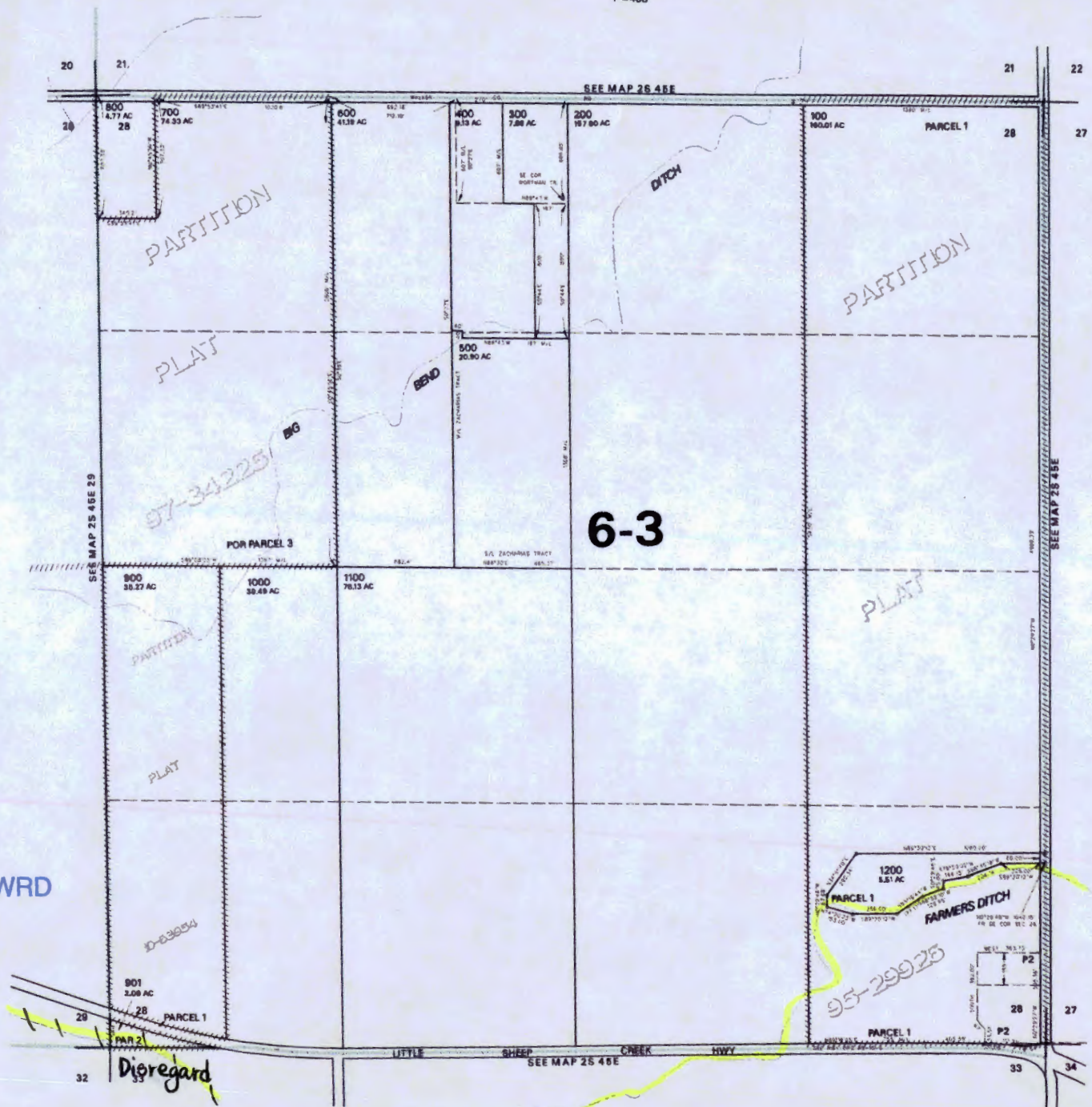
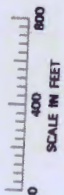
THIS MAP WAS PREPARED FOR
ASSESSMENT PURPOSE ONLY

SECTION 28 T.02S. R.45E. W.M.
WALLOWA COUNTY

1"=400'

02S 45E 28

CANCELLED NO.



6-3

RECEIVED BY OWRD

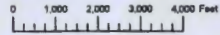
JAN 27 2014

SALEM, OR

PRINTED ON
12/10/12

02S 45E 28

THIS MAP WAS PREPARED FOR ASSESSMENT PURPOSE ONLY

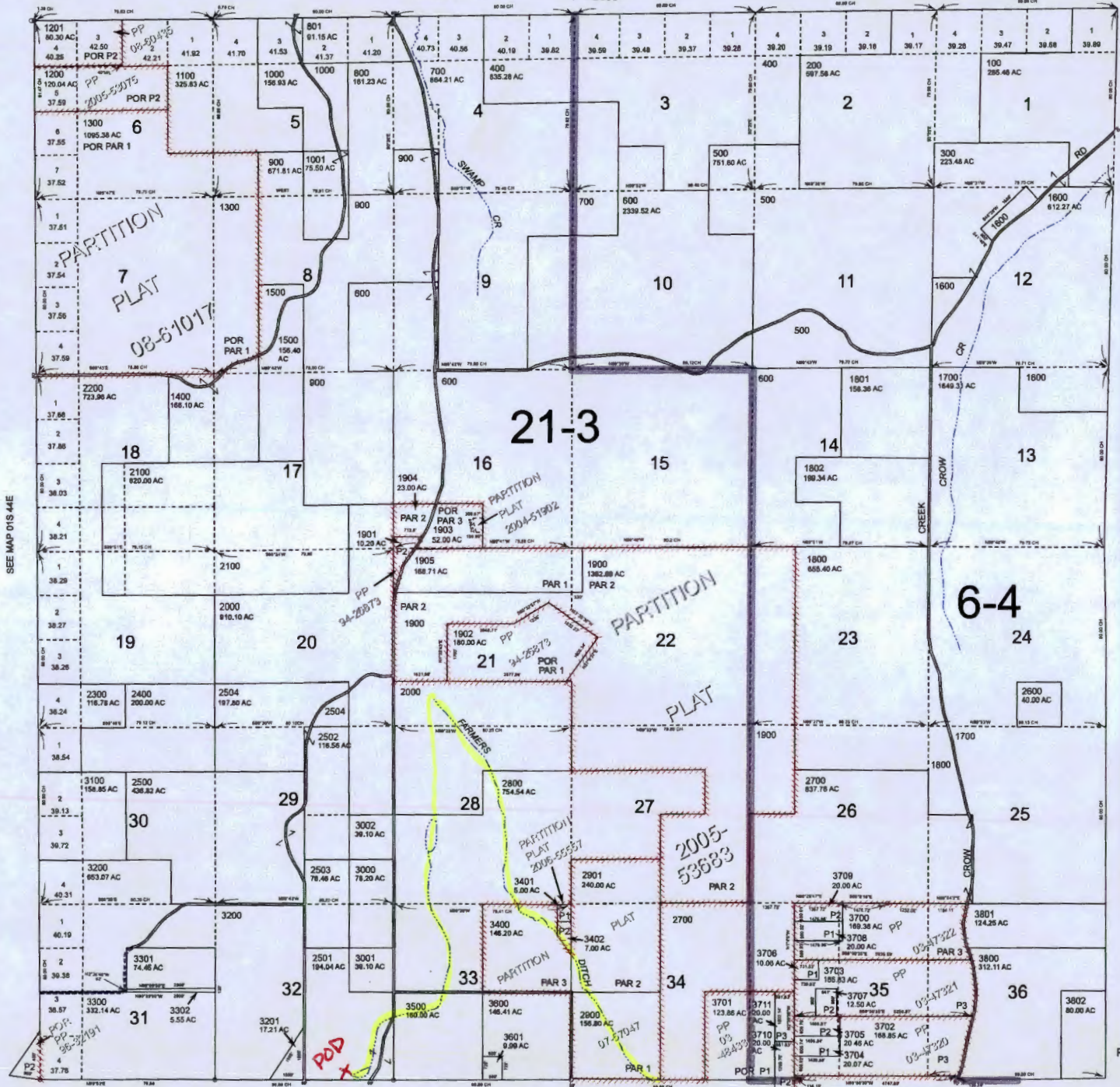


T.1S. R.45E. W.M.
WALLOWA COUNTY

01S45E

SEE MAP 01N 45E

1" = 2000'



Cancelled
301
302
1501
1602

RECEIVED BY OWRD

JAN 27 2014

SALEM, OR

Revised: converted
11/07/2013

SEE MAP 02S 45E

01S45E