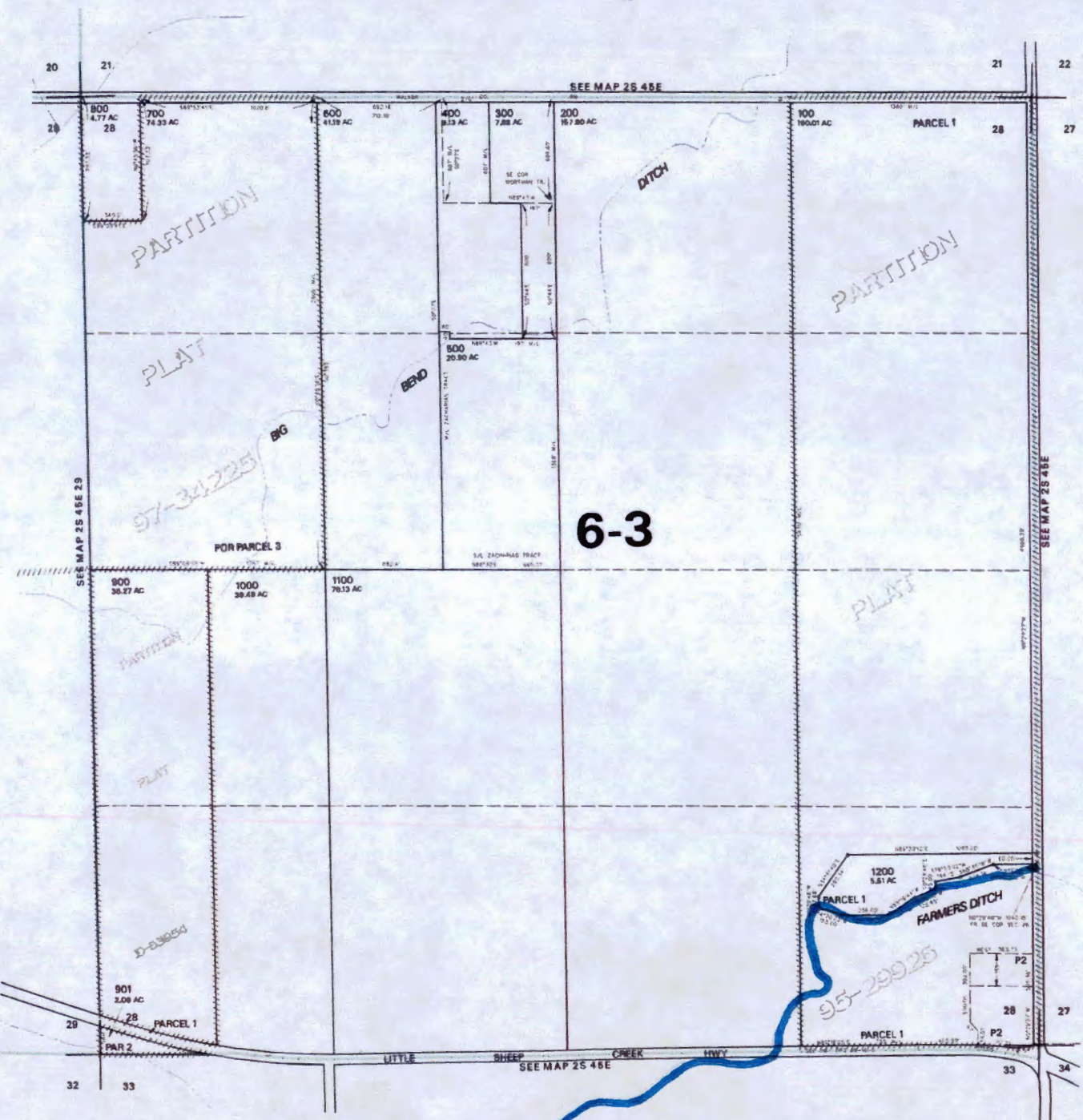
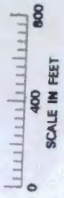


THIS MAP WAS PREPARED FOR ASSESSMENT PURPOSE ONLY

SECTION 28 T.02S. R.45E. W.M.
WALLOWA COUNTY
1" = 400'

02S 45E 28

CANCELLED NO.



8-87961

RECEIVED BY OWRD RECEIVED BY OWRD

FEB 19 2014

JAN 31 2014

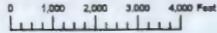
SALEM, OR

SALEM, OR

PRINTED ON 12/10/12

02S 45E 28

THIS MAP WAS PREPARED FOR ASSESSMENT PURPOSE ONLY



T.2S. R.45E. W.M. WALLOWA COUNTY

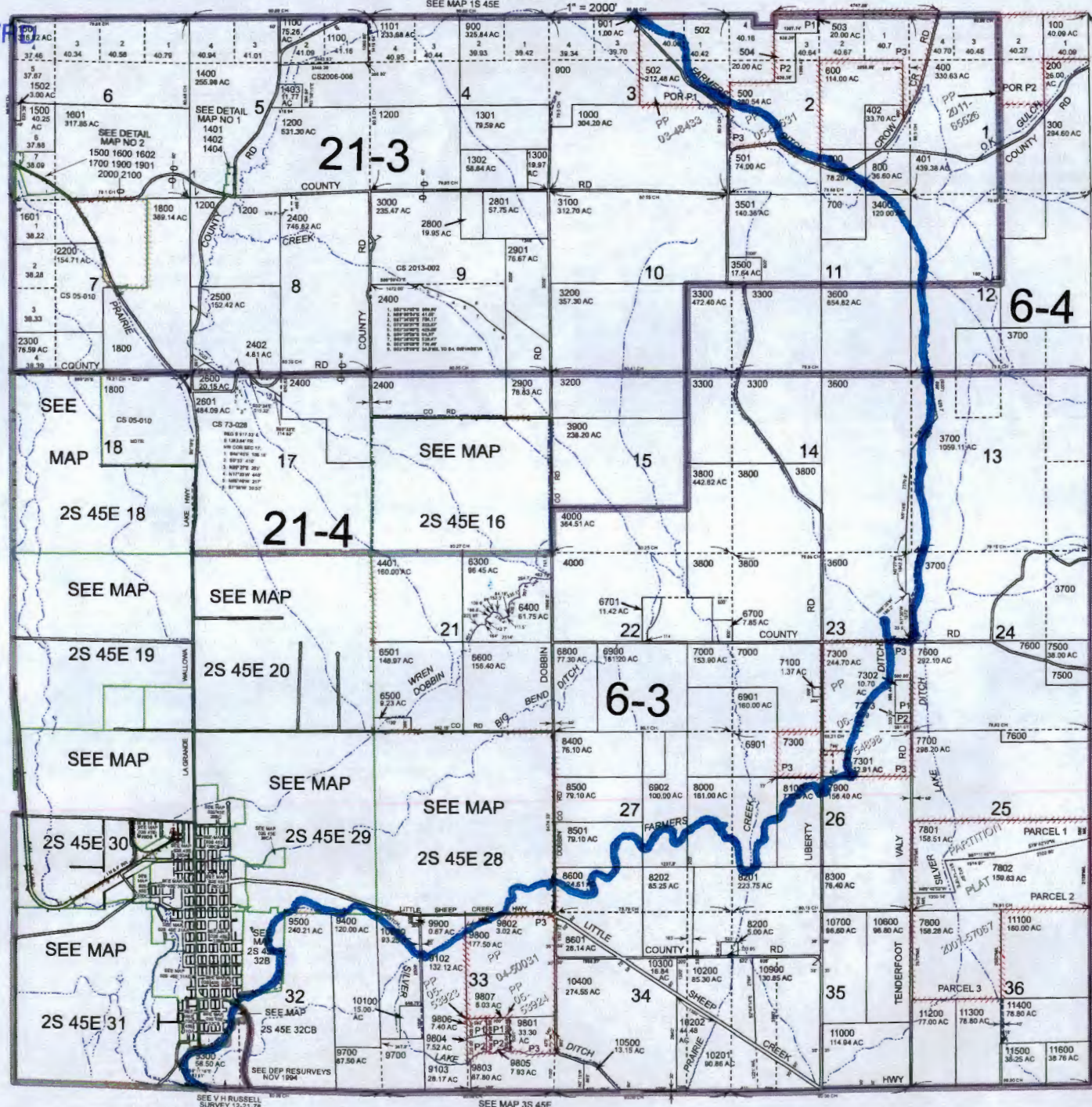
02S45E & INDEX

RECEIVED BY OWRD

JAN 31 2014

SALEM, OR

Handwritten note: 10/28/14



- Cancelled
- 2401
- 1401
- 1404
- 1402
- 1600
- 1602
- 1700
- 1800
- 1801
- 2000
- 2100
- 2403
- 3701 thru
- 3706
- 4100 thru
- 4400
- 4500 thru
- 6207
- 6702
- 6703
- 7200
- 7400
- 8203
- 8700 thru
- 9101
- 9200
- 9800 thru
- 9806
- 10800
- 10901

RECEIVED BY OWRD

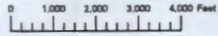
FEB 19 2014

SALEM, OR

Revised: DBJ 09/04/2013

& INDEX 02S45E

THIS MAP WAS PREPARED FOR ASSESSMENT PURPOSE ONLY

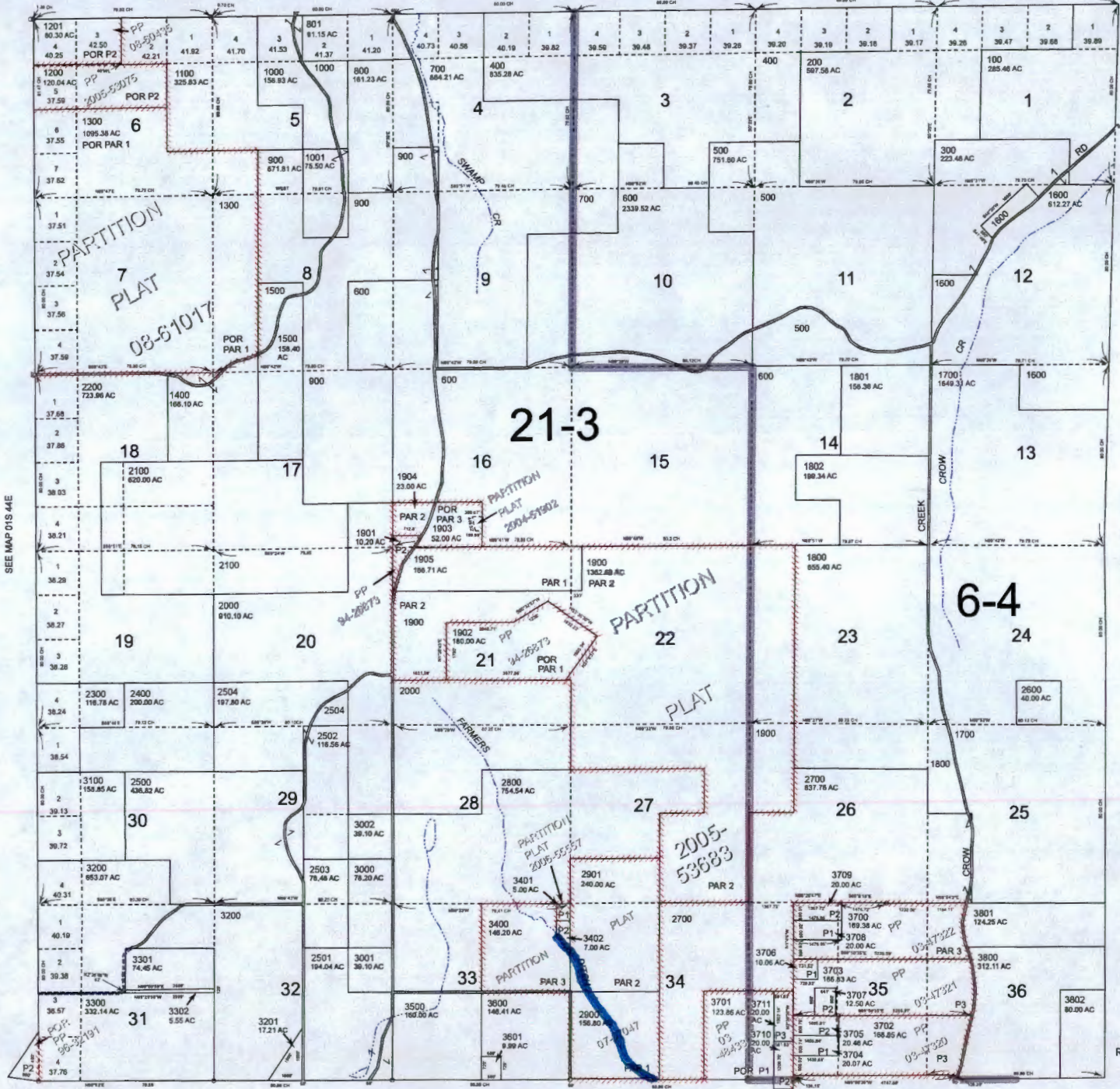


T.1S. R.45E. W.M. WALLOWA COUNTY

01S45E

SEE MAP 01N 45E

1" = 2000'



Cancelled
301
302
1601
1602

S-Street

SALEM, OR

FEB 19 2014

RECEIVED BY OWRD

SALEM, OR

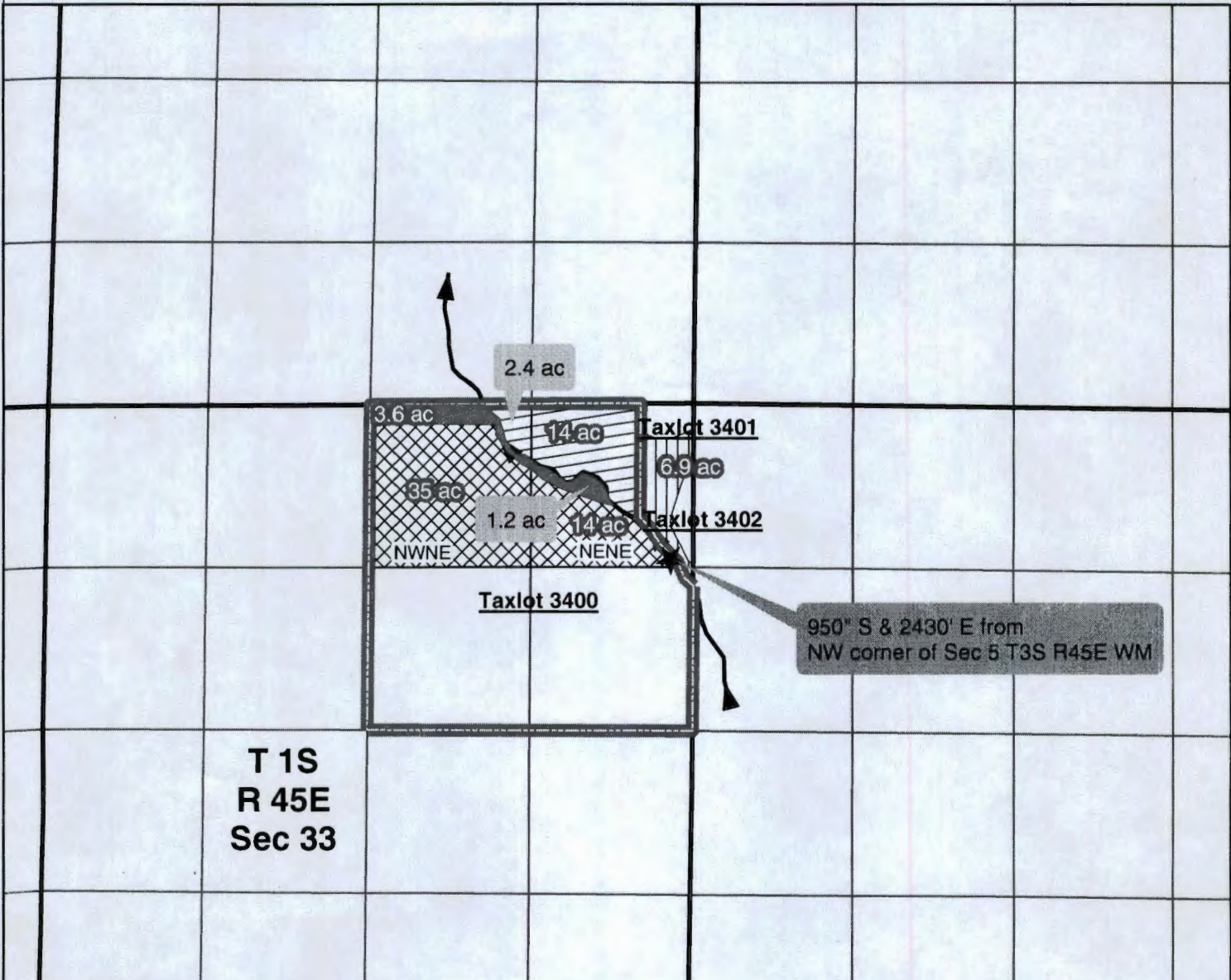
JAN 31 2014

RECEIVED BY OWRD

SEE MAP 02S 45E

Revised: converted
11/07/2013

01S45E



Legend

- New Primary Water Right Acres
- Diversion
- Taxlot
- Farmers Ditch
- Unchanged 3024 Priority Date 12/31/1900
- Removed due to ownership change, 47110 Priority Date 12/11/1975
- Unchanged 47110 Priority Date 12/11/1975 and new stored water acres applied for.
- Township Range
- Quarter Sections

RECEIVED BY OWRD

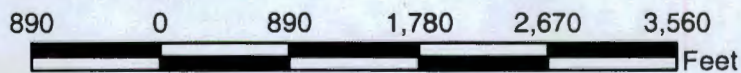
JAN 31 2014

SALEM, OR

RECEIVED BY OWRD

FEB 19 2014

SALEM, OR



1"=1320'

S-8706

