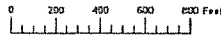
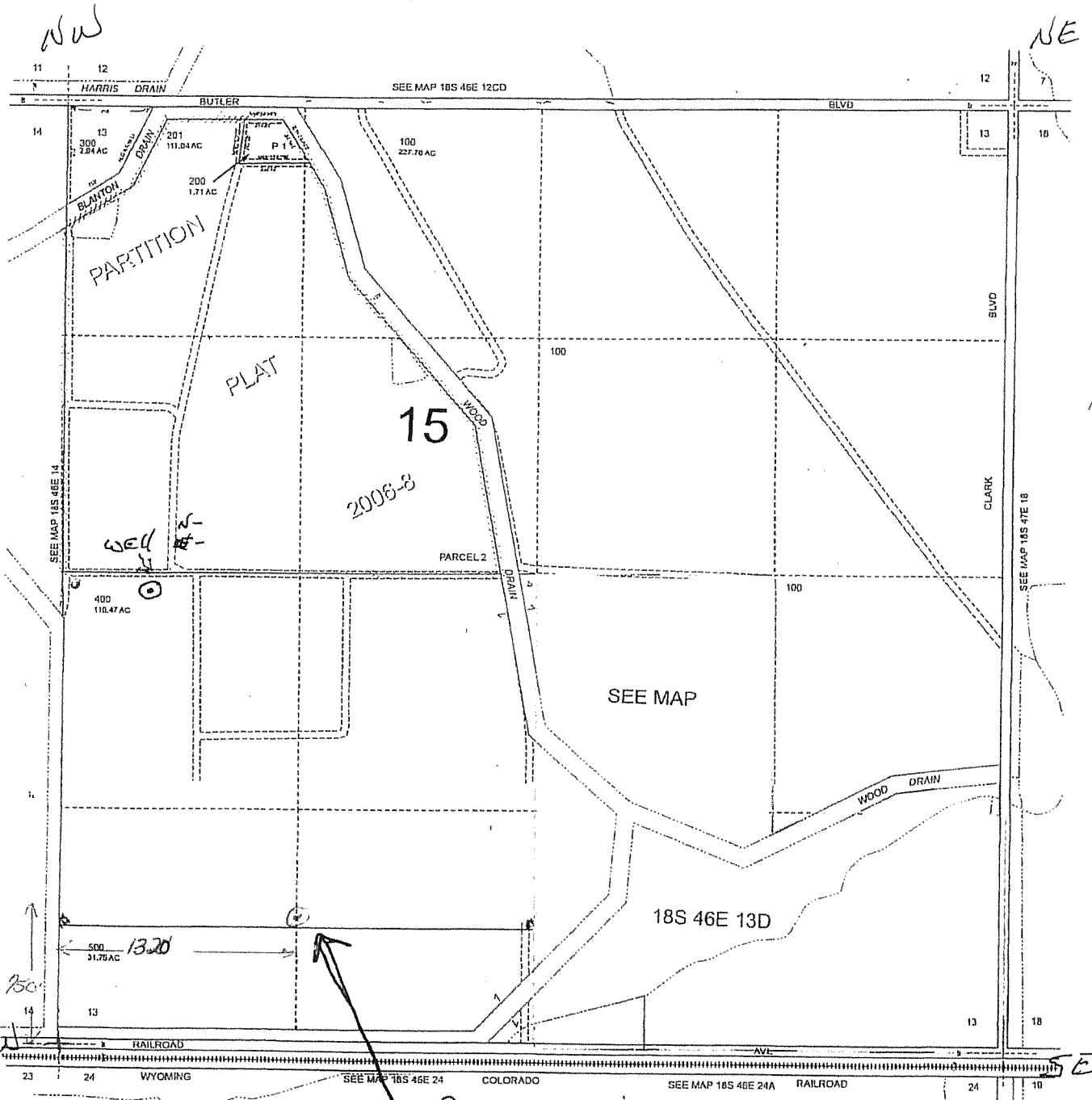


THIS MAP WAS PREPARED FOR  
ASSESSMENT PURPOSE ONLY



SECTION 13 T.18S. R.46E. W.M.  
MALHEUR COUNTY  
1" = 400'

18S46E13  
& INDEX



**RECEIVED**

MAR 05 2014

WATER RESOURCES DEPT  
SALEM, OREGON

110' for EACH  
MARK

G-17703

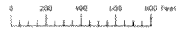
S.W. CORNER  
of SEC. 13

Proposed well site.

Revised: MA  
10/01/2013

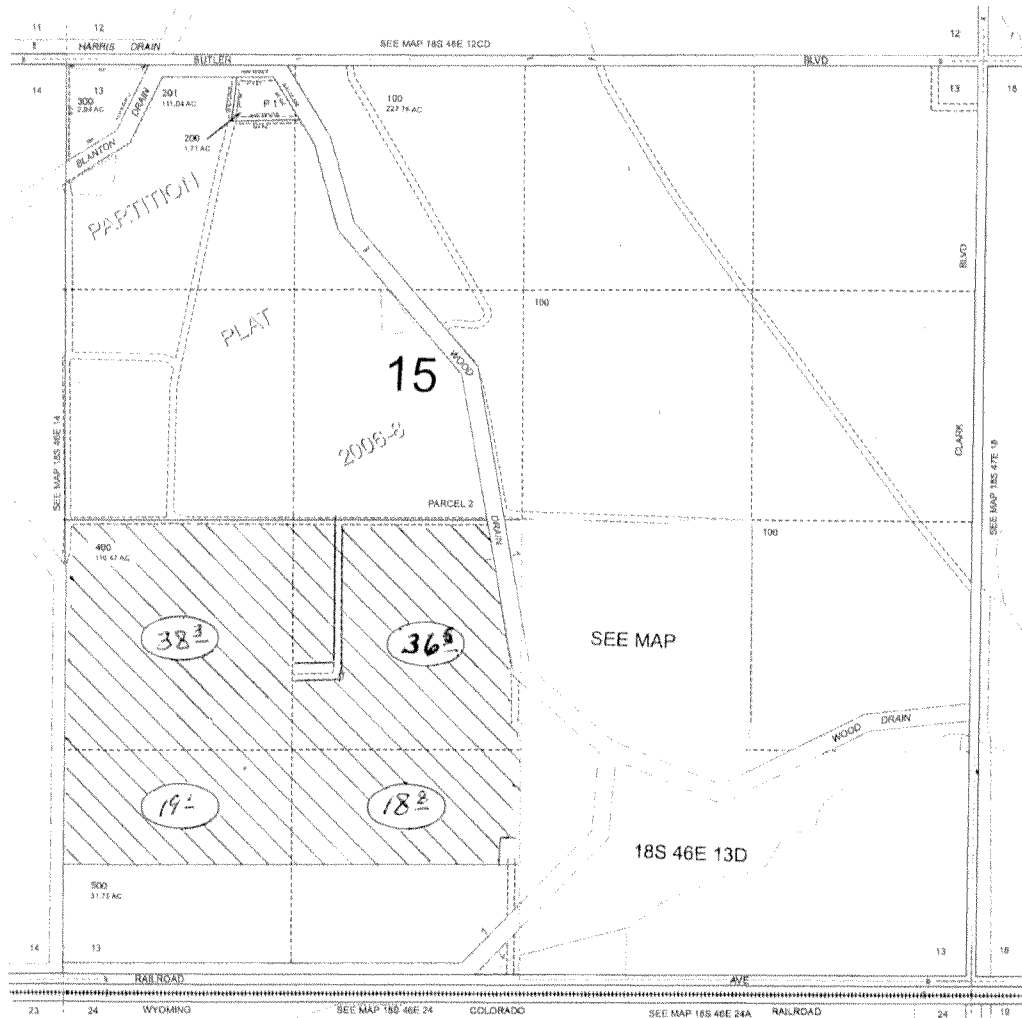
& INDEX  
18S46E13

THIS MAP WAS PREPARED FOR  
ASSESSMENT PURPOSE ONLY



SECTION 13 T.18S. R.46E. W.M.  
MALHEUR COUNTY

18S46E13  
& INDEX



1" = 1000' approx

Revised: MA  
10/01/2013

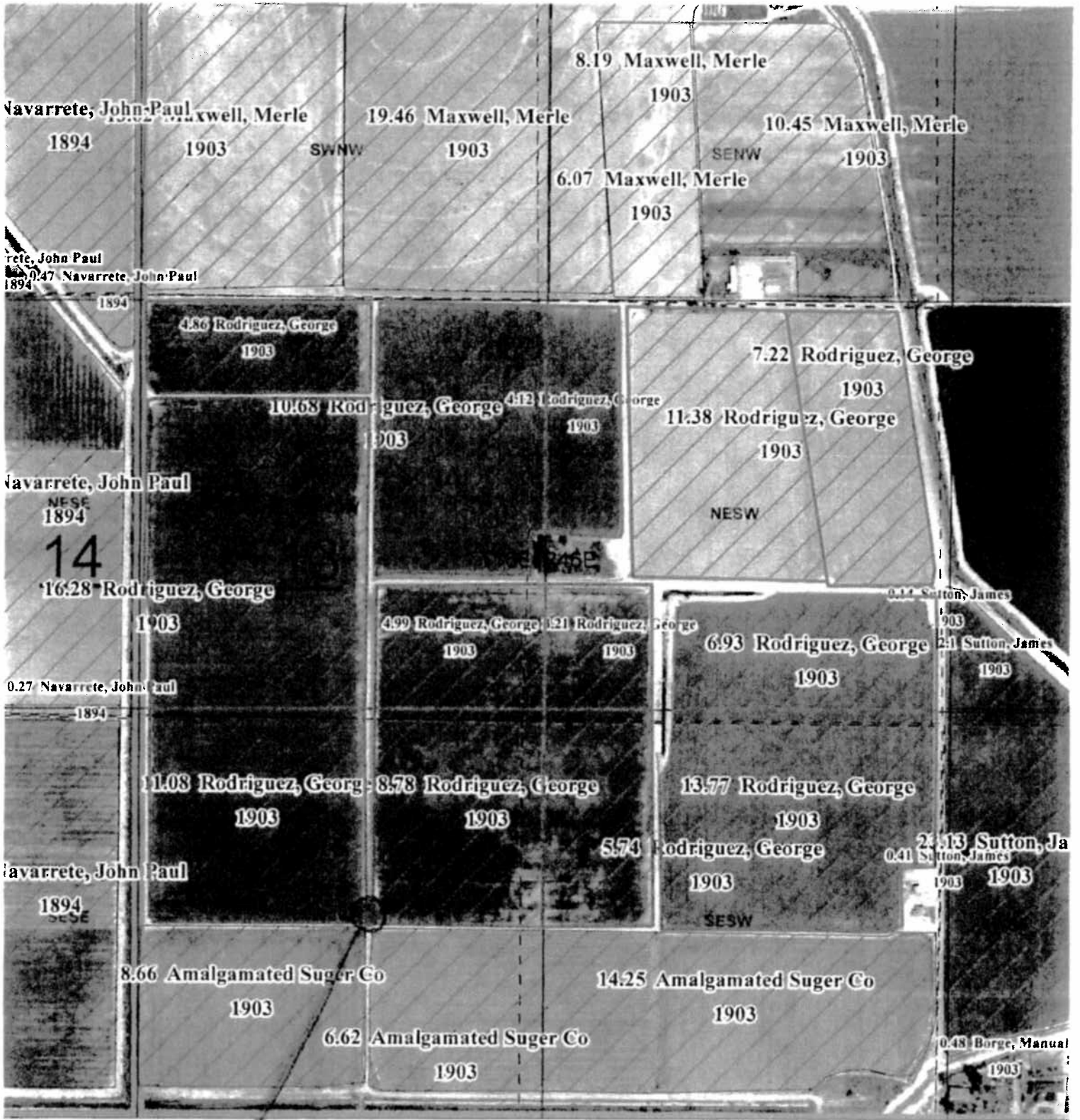
& INDEX  
18S46E13

G-17703

MAR 05 2014

RECEIVED

WATER RESOURCES DEPT  
SALEM, OREGON



*Prop well site*



RECEIVED W O W P D

DEC 19 2013

SALEM, OR

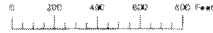
**RECEIVED**

MAR 05 2014

WATER RESOURCES DEPT  
SALEM, OREGON

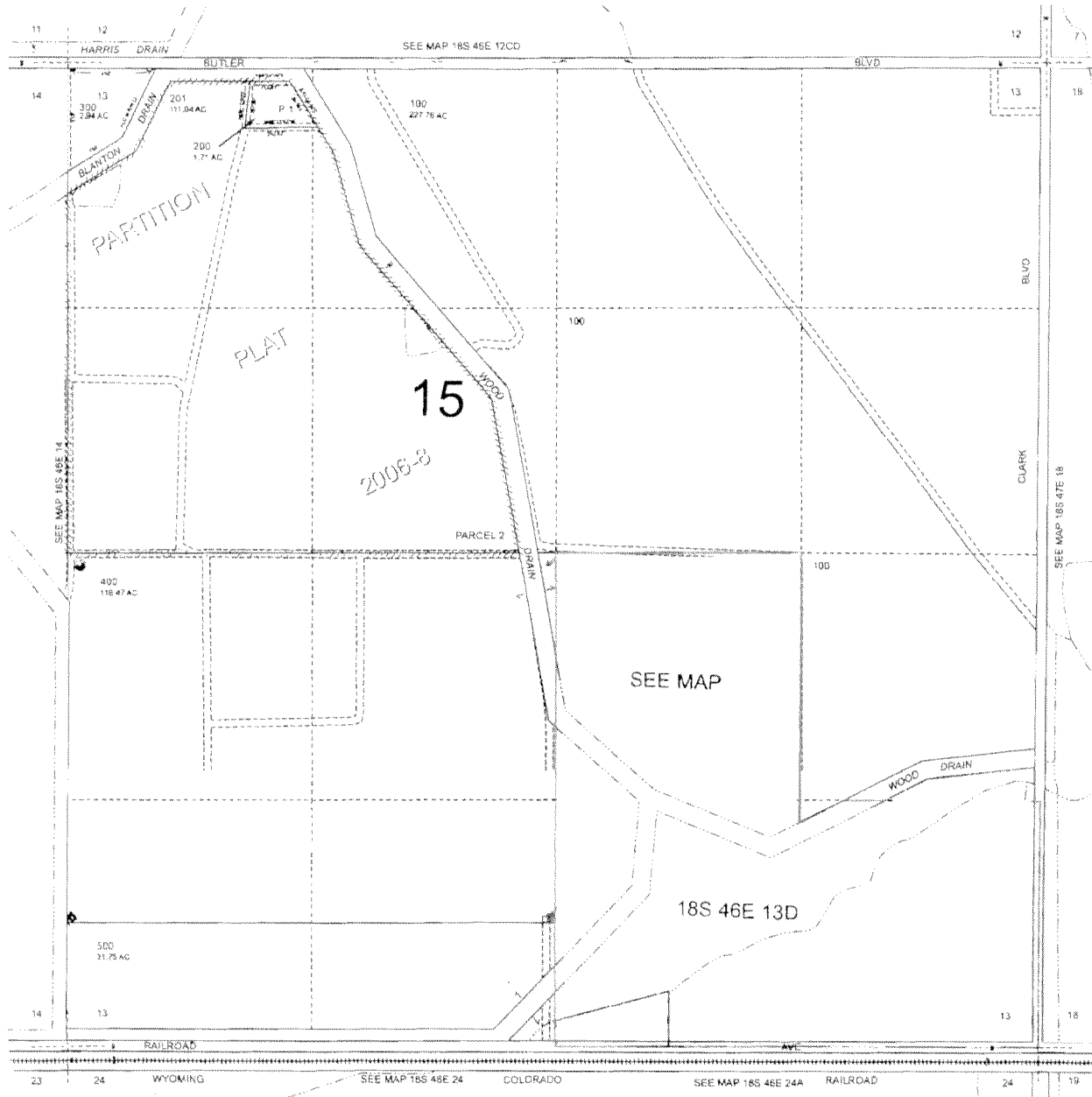
G-17783

THIS MAP WAS PREPARED FOR  
ASSESSMENT PURPOSE ONLY



SECTION 13 T.18S. R.46E. W.M.  
MALHEUR COUNTY  
1" = 400'

18S46E13  
& INDEX



RECEIVED BY OWRD

DEC 19 2013

SALEM, OR

6-17783

RECEIVED

MAR 05 2014

WATER RESOURCES DEPT  
SALEM, OREGON

Revised: MA  
10/01/2013

& INDEX  
18S46E13