

19

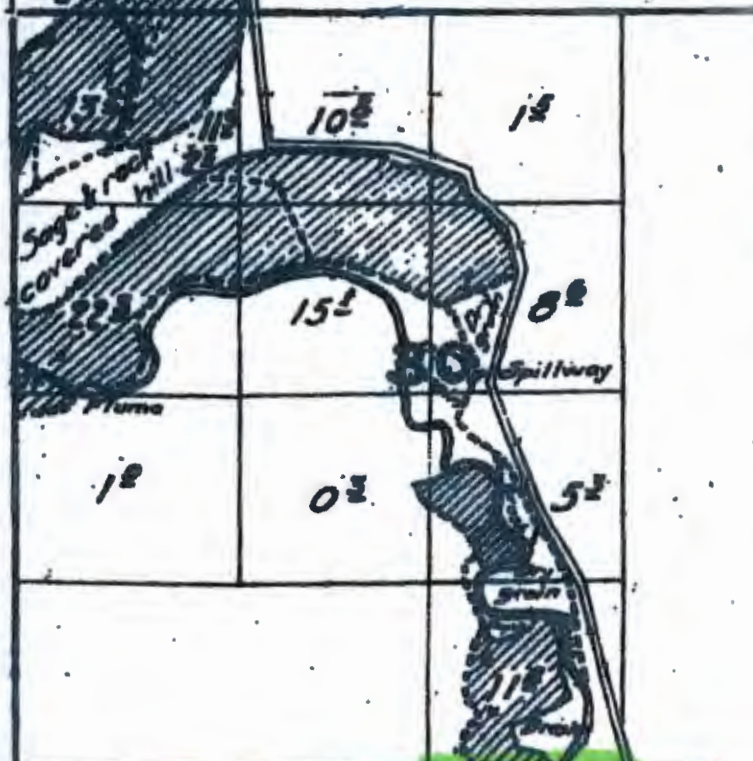
J. Stephens



1 inch = 1,320 feet

Arthur Wheelhouse

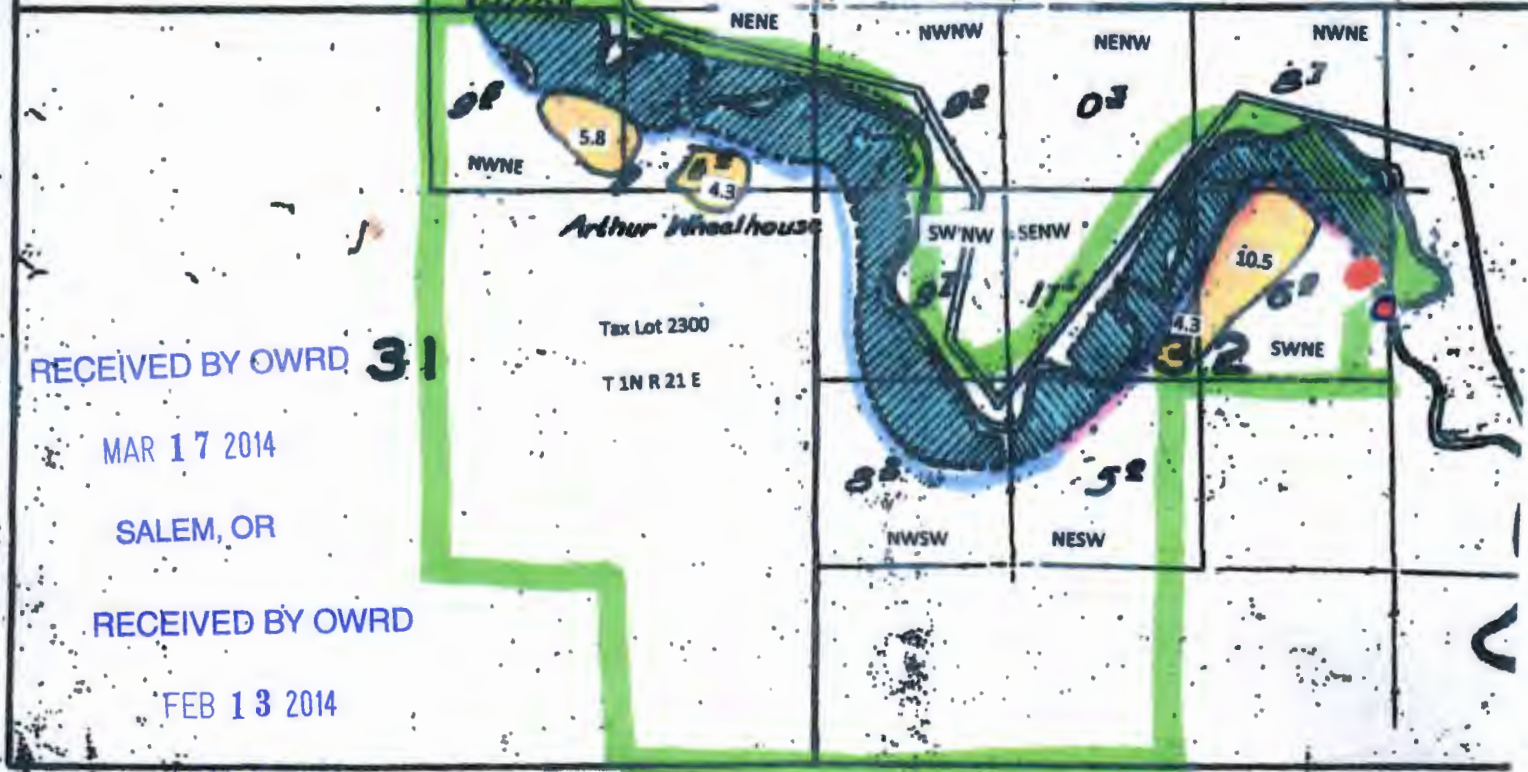
- Existing Mainline (follows Marvel ditch) █
- Proposed Mainline (follows Marvel ditch) █
- Current POD Marvel ditch (2160 S 3995 E NW from corner of Sec. 32) ●
- Proposed pump location (2075 S 3870 E from corner of Sec. 32) ●
- Yellow fields proposed primary water right from ground water
- Blue fields proposed supplemental water right from ground water



29

Note:
Streams and roads, except in the vicinity of irrigated land, are sketched in approximate location.

Corner Section 32



RECEIVED BY OWRD 31

MAR 17 2014

SALEM, OR

RECEIVED BY OWRD

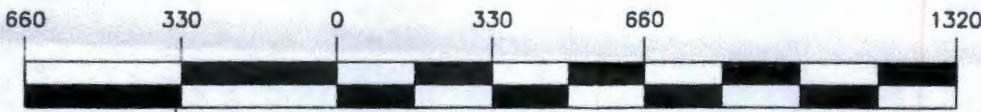
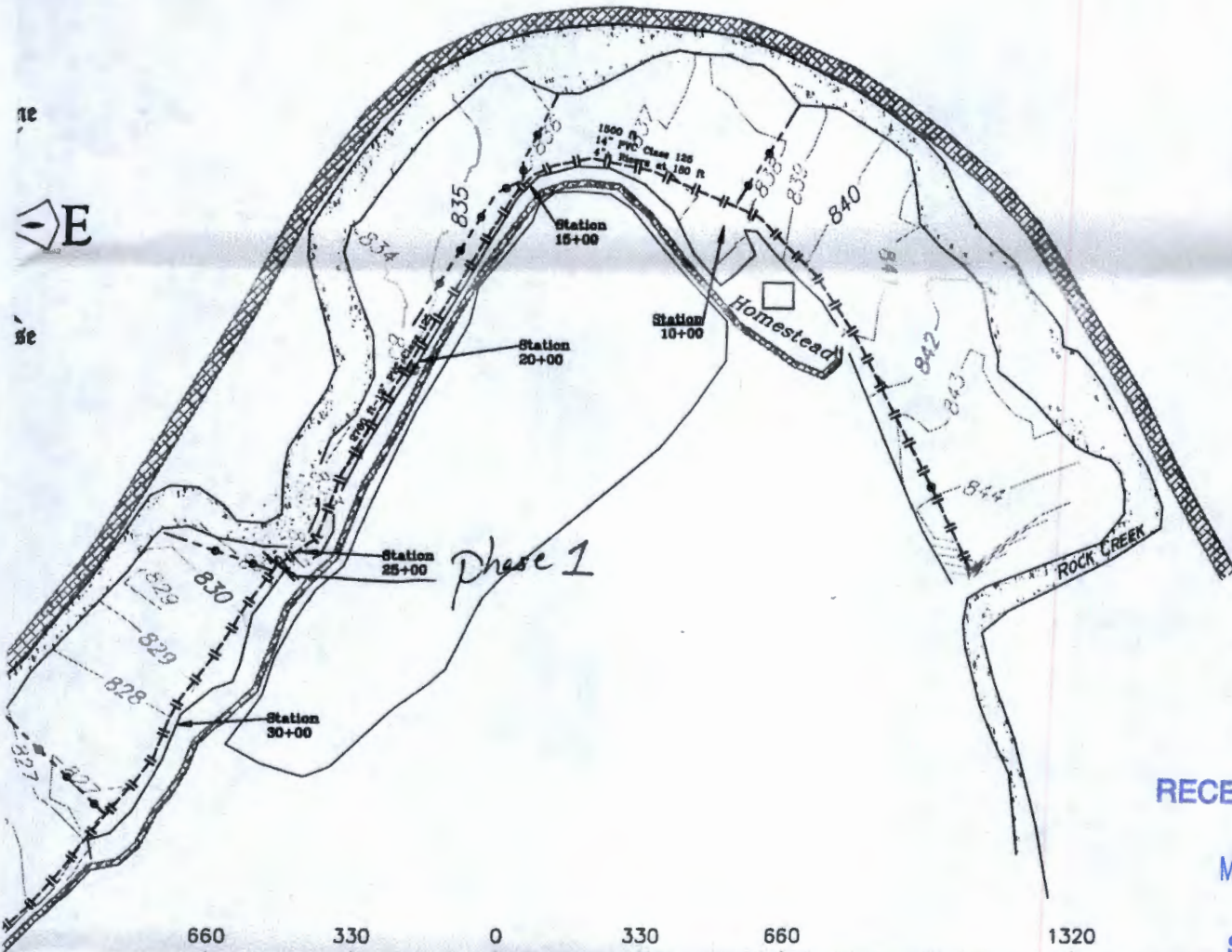
FEB 13 2014

SALEM, OR

6-7796

Stage 1 - Complete

See Sheet 3
Station 0+00 - 25+00



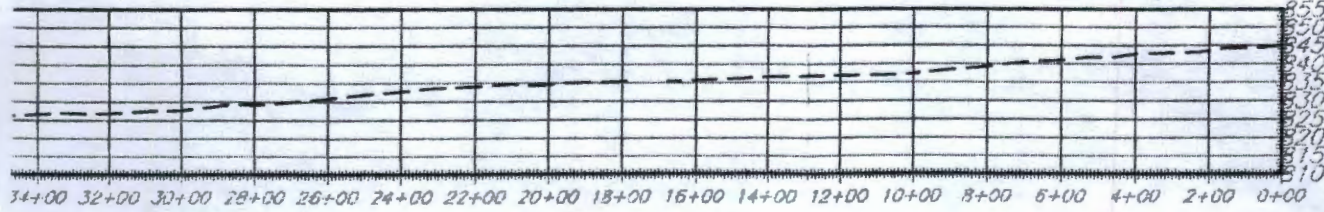
GRAPHIC SCALE
(FEET)

1520 ft 14"
2760 12"
2680 10"
520 8"

RECEIVED BY OWRD

FEB 13 2014

SALEM, OR



34+00 32+00 30+00 28+00 26+00 24+00 22+00 20+00 18+00 16+00 14+00 12+00 10+00 8+00 6+00 4+00 2+00 0+00

Date	09/10
Designed	J. Collier
Drawn	J. Collier
Checked	
Approved	
Title	

Irrigation Pipeline
Plan View
Chet Wilkins
JDU BASIN

RECEIVED BY OWRD

MAR 17 2014

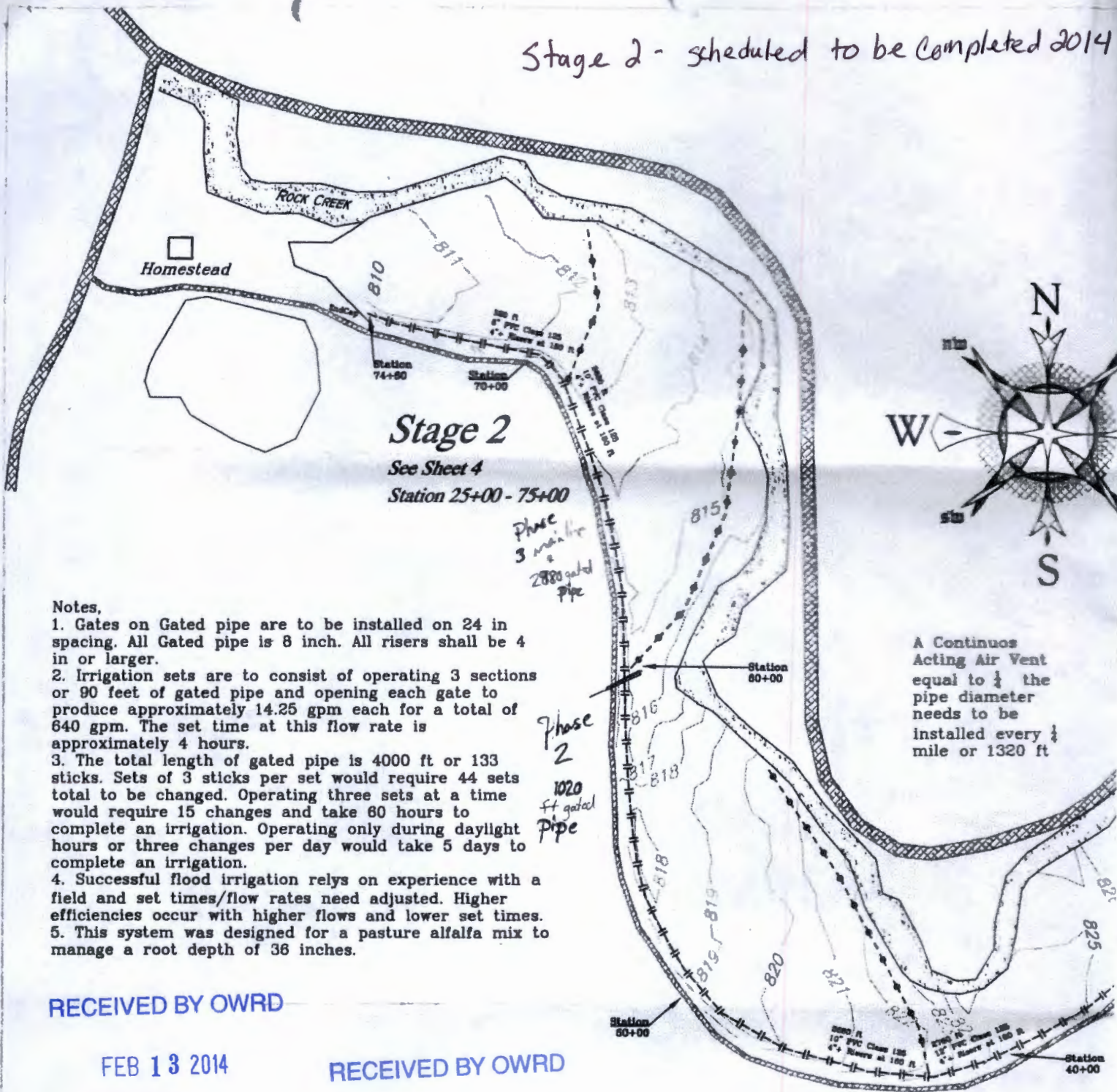
SALEM, OR



File Name	
Drawing No.	
Sheet	2 of 5

G-1776

Stage 2 - scheduled to be completed 2014



RECEIVED BY OWRD

FEB 13 2014

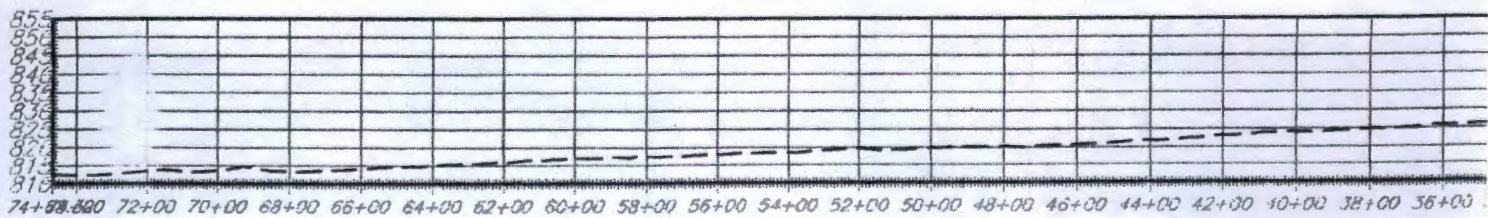
SALEM, OR

RECEIVED BY OWRD

MAR 17 2014

SALEM, OR

Profile



G-17796

Not to scale with Draw

THIS MAP WAS PREPARED FOR ASSESSMENT PURPOSE ONLY



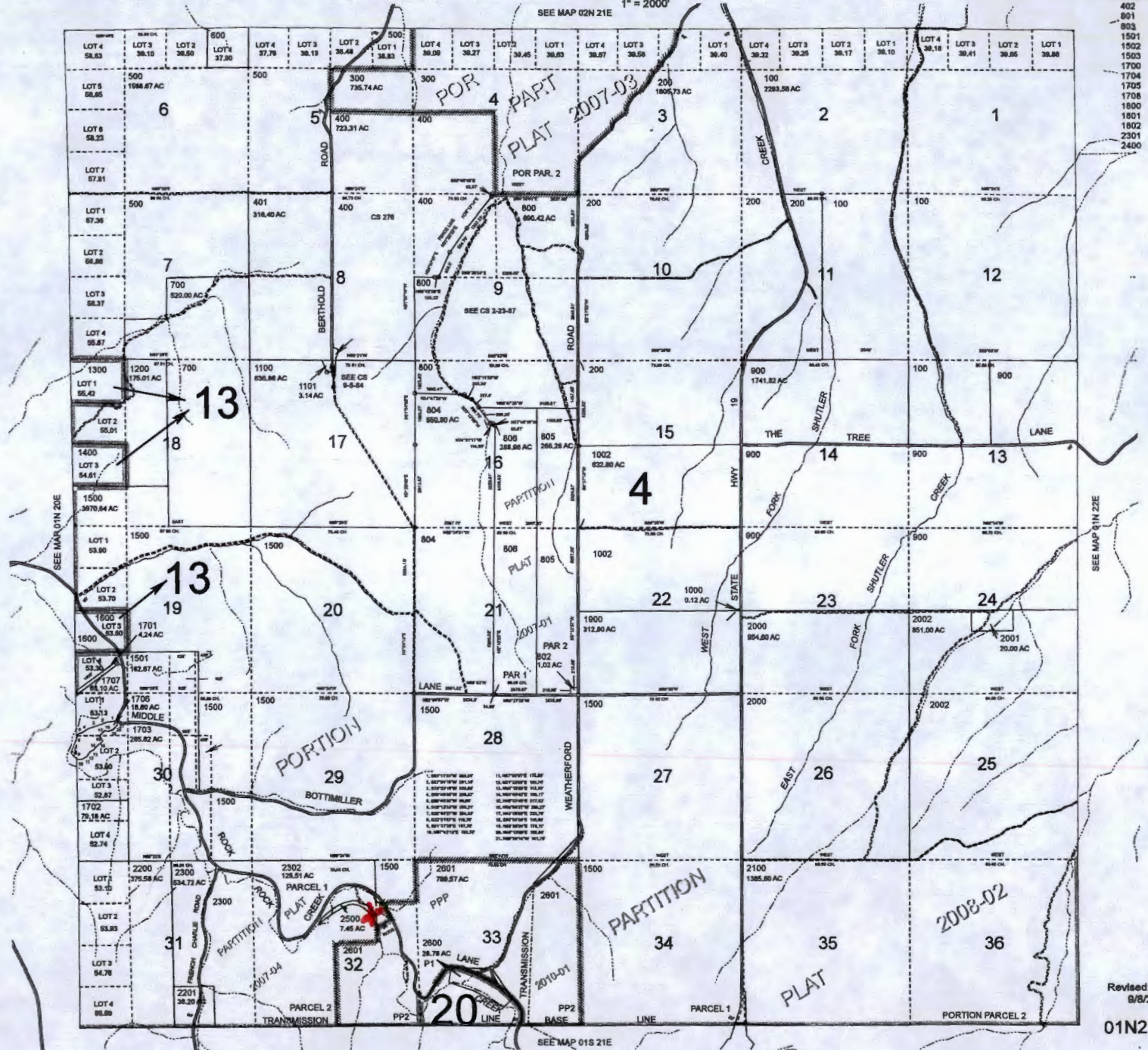
T.1N. R.21E. W.M. GILLIAM COUNTY

1" = 2000'

01N21E

CANCELLED:

- 402
- 801
- 803
- 1501
- 1502
- 1503
- 1700
- 1704
- 1705
- 1708
- 1800
- 1801
- 1802
- 2301
- 2400



0-1-7796

RECEIVED BY OWRD / RECEIVED BY OWRD

MAR 17 2014

FEB 13 2014

SALEM, OR

SALEM, OR

Revised: MA 9/8/2011

01N21E