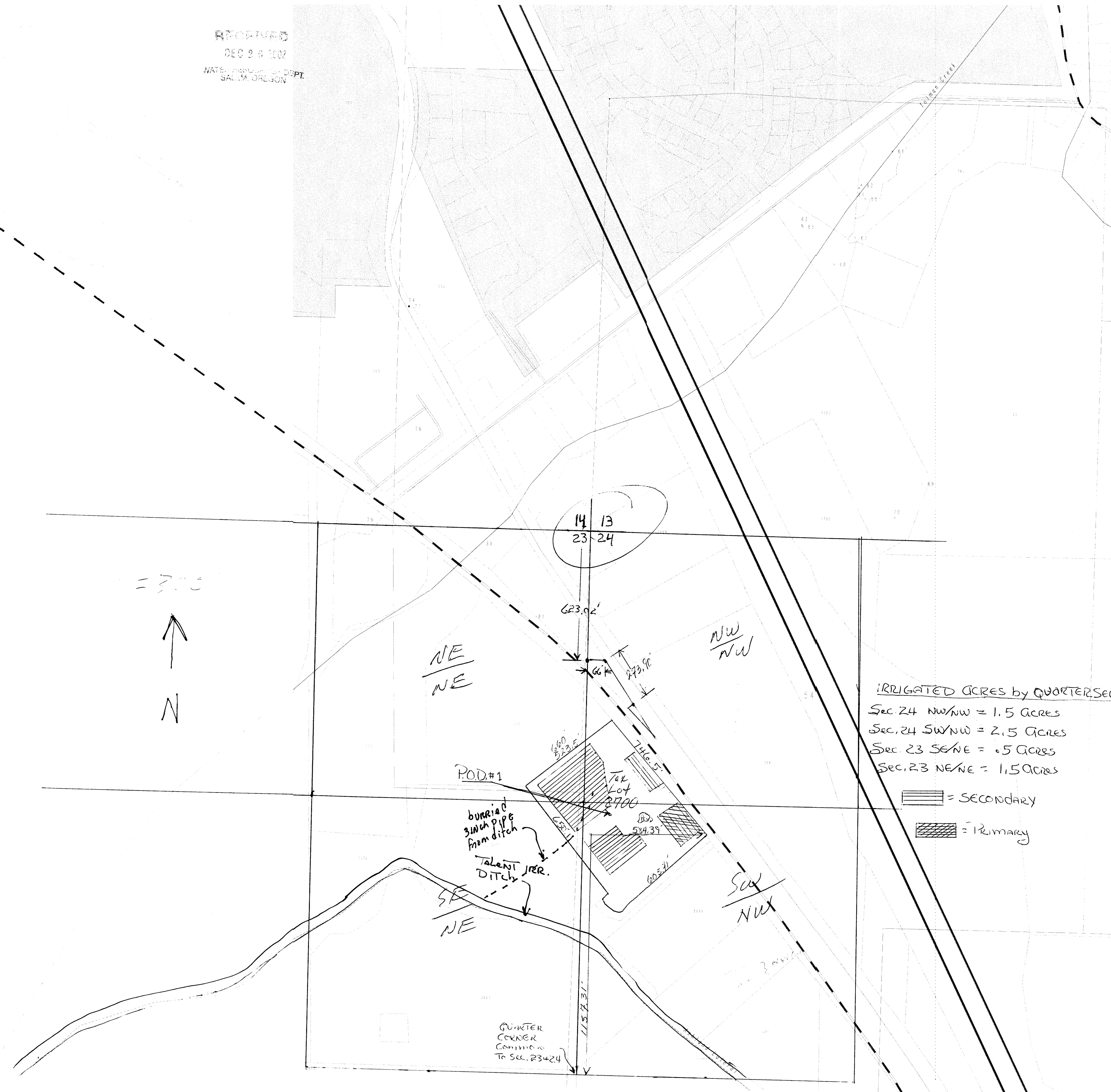


WATER RIGHTS IN TOWNSHIP 39 S 1 E

Section(s) 23

App# G-15898 Permit #

RECEIVED
DEC 28 2002
WATER RESOURCES DEPT.
SALIM, OREGON



IRRIGATED ACRES by QUARTER SECTION

Sec. 24 NW/NW	= 1.5 ACRES
Sec. 24 SW/NW	= 2.5 ACRES
Sec. 23 SE/NE	= 0.5 ACRES
Sec. 23 NE/NE	= 1.5 ACRES

▨ = SECONDARY
▨ = PRIMARY

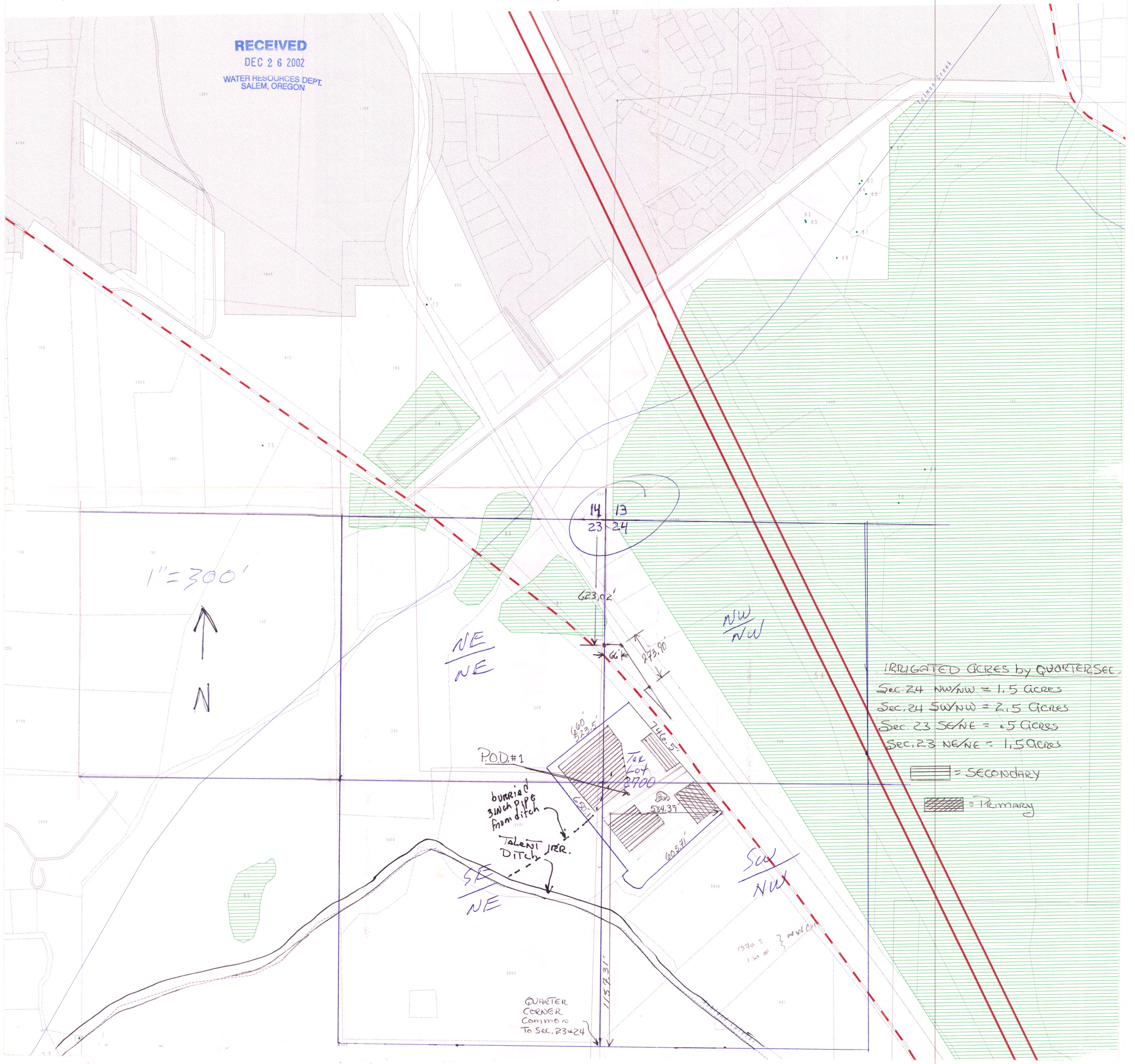
QUARTER CORNER
COMMON
TO SEC. 23 & 24

WATER RIGHTS IN TOWNSHIP 39 S 1 E

Section(s) 23

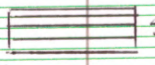
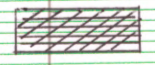
App#G-15898 Permit #

RECEIVED
DEC 26 2002
WATER RESOURCES DEPT.
SALEM, OREGON



IRRIGATED ACRES by QUARTER SEC

Sec. 24 NW/NW	= 1.5 Acres
Sec. 24 SW/NW	= 2.5 Acres
Sec. 23 SE/NE	= 0.5 Acres
Sec. 23 NE/NE	= 1.5 Acres

 = Secondary
 = Primary

QUARTER CORNER
Common to
Sec. 23 & 24