

KERR
G-17843

05.08.14

TAX LOT 607
Well on TL 606
Home on TL 607

THIS MAP WAS PREPARED FOR
ASSESSMENT PURPOSE ONLY

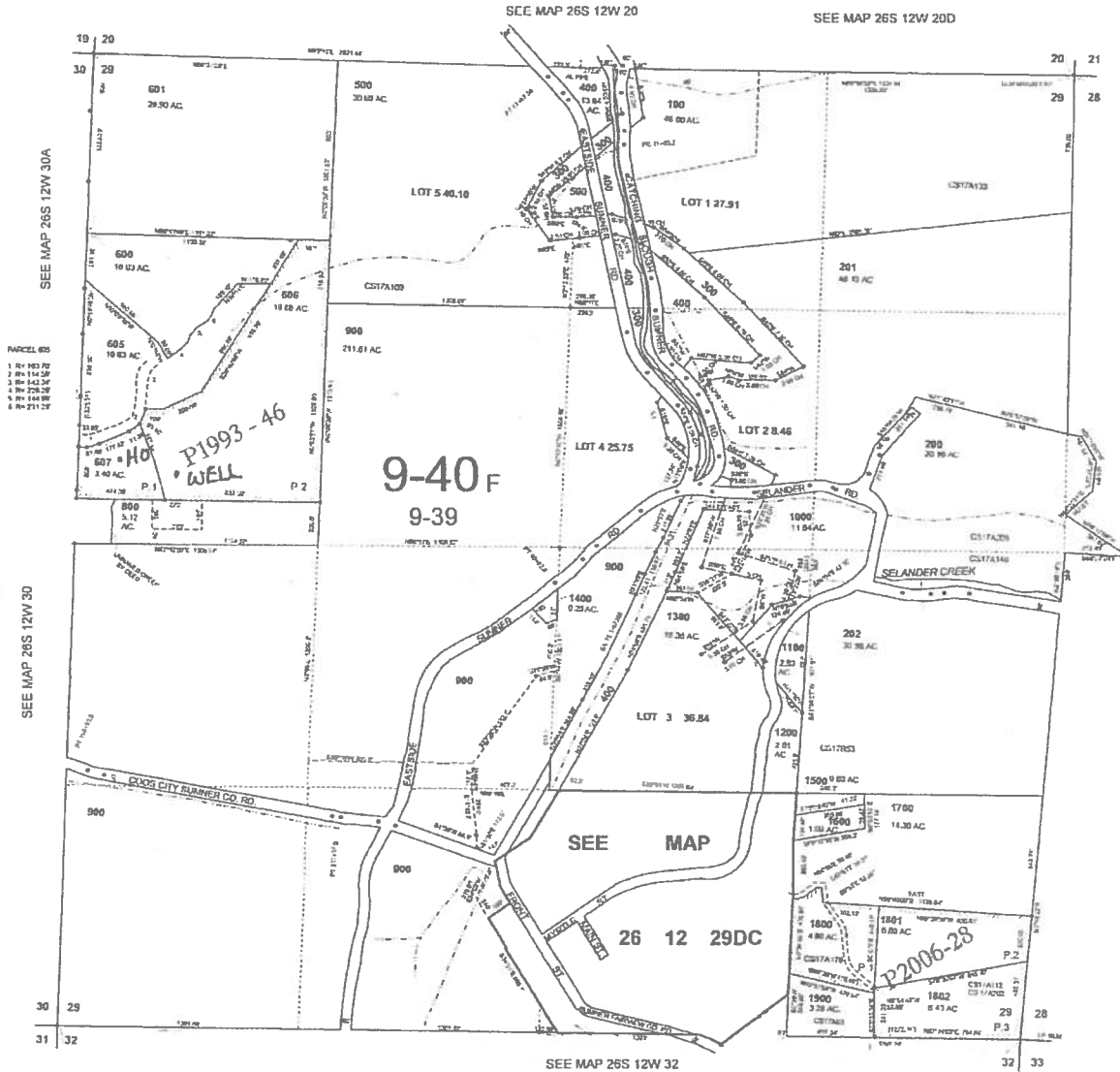
SECTION 29 T26S R12W W.M.
COOS COUNTY

1" = 400'

26S 12W 29
& INDEX

CANCELLED NO.

- 602
- 603
- 604
- 700
- 203



House - 2310' S., & 400 FT. EAST OF
NW CORNER Sec. 29

Well - 2400 FT. S., & 640 FT. EAST
OF NW CORNER Sec. 29

11-1-2008

26S 12W 29
& INDEX

RECEIVED

MAY 8 2014

WATER RESOURCES DEPT
SALEM, OREGON

M. O'LEARY

Superseded

RECEIVED BY OWRD

APR 18 2014

SALEM, OR

SECTION 29 T.26S. R.12W. W.M.
COOS COUNTY

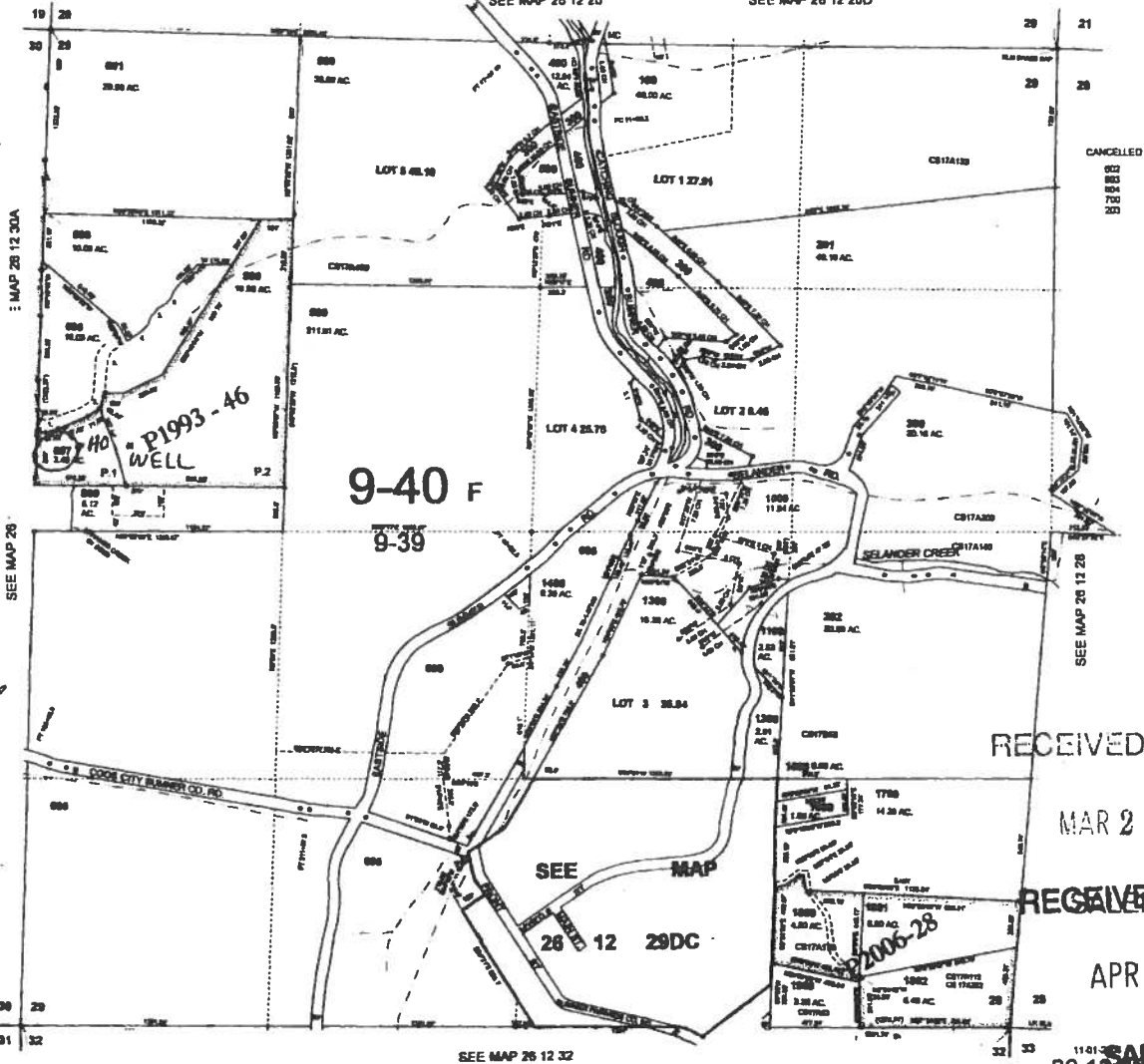
26 12 29
& INDEX

THIS MAP WAS PREPARED FOR
ASSESSMENT PURPOSE ONLY

1" = 400'

SEE MAP 26 12 20

SEE MAP 26 12 20



TAX LOT
607

WELL
LOCATED
ON TAX
LOT 606

HOME
LOCATED
ON TAX
LOT 607

RECEIVED BY OWRD

MAR 21 2014

RECEIVED BY OWRD

APR 04 2014

SALEM, OR
& INDEX

HOUSE IS LOCATED 1150 FT. SOUTH &
400 FEET EAST OF THE NW CORNER OF
SEC. 29

WELL IS LOCATED 1100 FEET SOUTH & 640
FEET EAST OF THE NW CORNER OF SEC. 29

MITCH LEWIS 03.19.14 G-7843