

RECEIVED BY OWRD

APR 17 2014

SALEM, OR

RECEIVED BY OWRD

MAR 27 2014

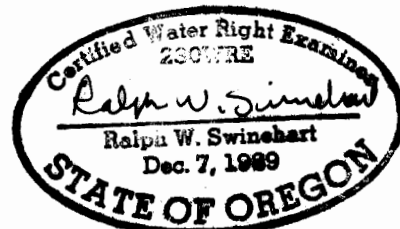
SALEM, OR

PATTON OWNERSHIP IS TL 6901 160 AC & TL 7000 160 AC

THIS APPLICATION IS TO APPROPRIATE STORED WATER FROM WALLOWA LAKE UNDER R-347 CERTIFICATE 9310 FOR THE SUPPLEMENTAL IRRIGATION OF 1.0 AC IN THE NW 1/4 SW 1/4, 6.5 AC IN THE NE 1/4 SW 1/4, 38.4 AC IN THE SE 1/4 SW 1/4, AND 6.7 AC IN THE SW 1/4 SW 1/4, ALL IN SEC 23, T25 R 45E. WATER WILL DELIVERED VIA FARMERS DITCH AND UTILIZE EXISTING MAINLINES

POINT OF DIVERSION FOR FARMERS DITCH IS WALLOWA LAKE DAM, 940'S 1500'E FROM THE NW CORNER OF SEC 5, T35, R 45E WM.

THIS MAP IS BASED ON USGS QUAD MAP AND PREVIOUS WATER RIGHT MAP FOR CERT 35044. IT IS PREPARED FOR WATER RIGHT PURPOSES ONLY AND SHOULD NOT BE USED FOR PROPERTY LOCATION PURPOSES.



RENEWALS 6/30/14

WATER RIGHT APPLICATION MAP FOR KARL & KAREN PATTON JOSEPH, OREGON

PREPARED BY:
WALLOWA MOUNTAIN ENGINEERING
PO BOX 266
ENTERPRISE, OREGON

JAN. 2014

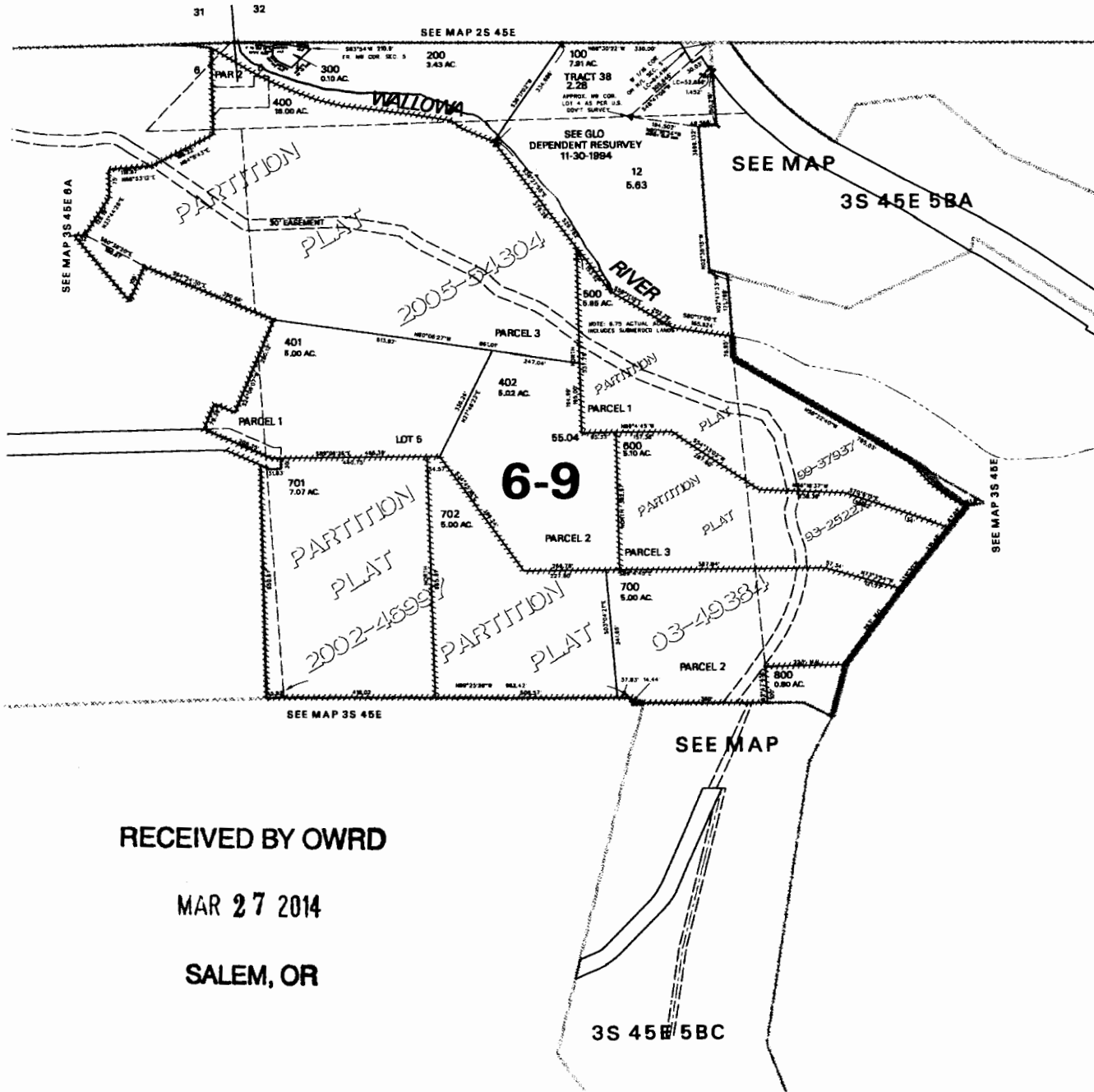
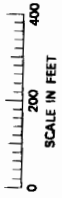
S-87972

THIS MAP WAS PREPARED FOR
ASSESSMENT PURPOSE ONLY

NW1/4 SECTION 05 T.03S. R.45E. W.M.
WALLOWA COUNTY

1"=200'

03S 45E 05B
& INDEX



S-8772

SALEM, OR

APR 17 2014

RECEIVED BY OWRD

RECEIVED BY OWRD

MAR 27 2014

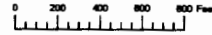
SALEM, OR

3S 45E 5BC

PRINTED ON
09/20/06

03S 45E 05B
& INDEX

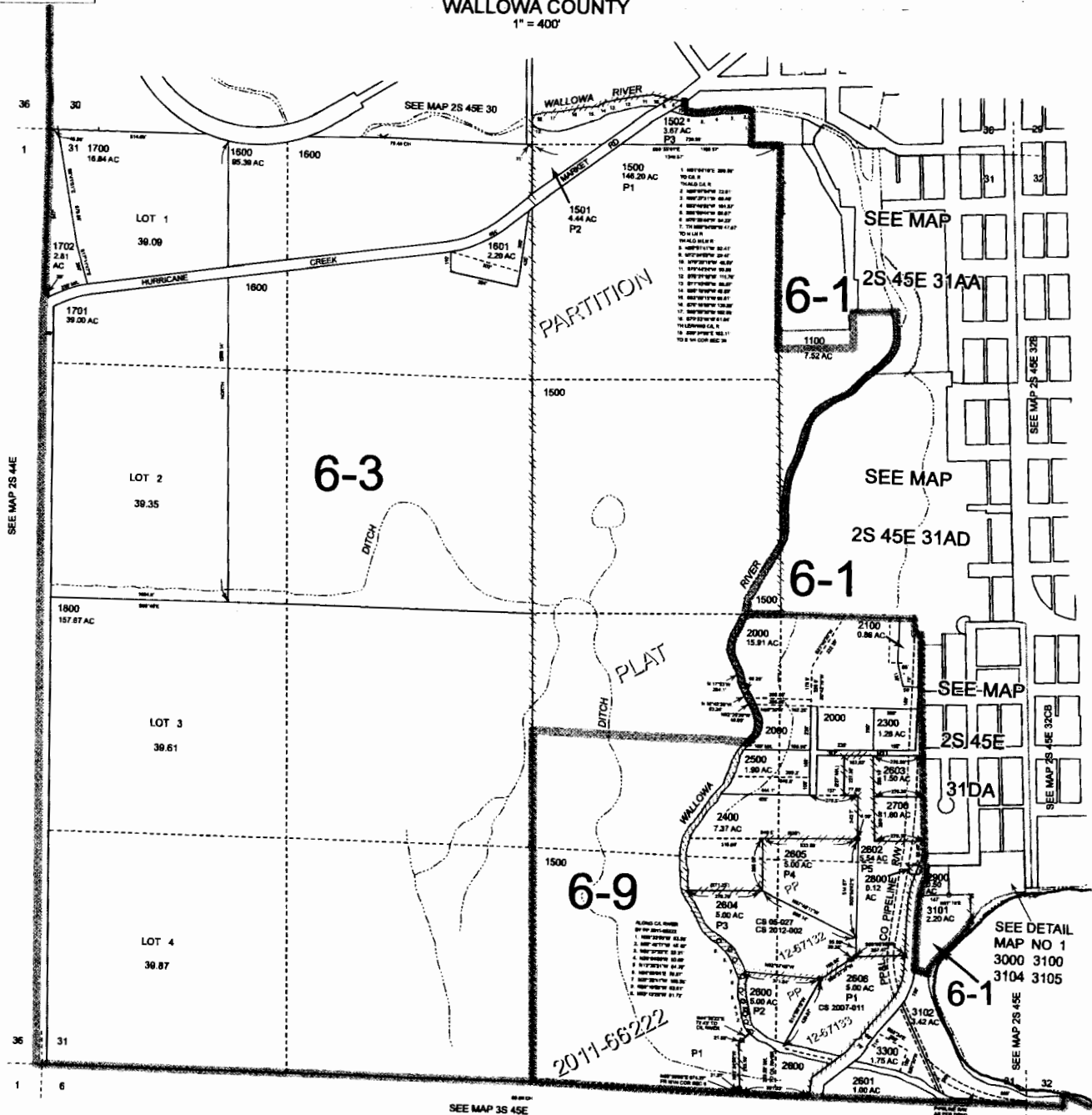
THIS MAP WAS PREPARED FOR
ASSESSMENT PURPOSE ONLY



SECTION 31 T.2S. R.45E. W.M.
WALLOWA COUNTY
1" = 400'

02S45E31
& INDEX

Cancelled
100 THRU
1000
1200 THRU
1400
1600
1800
2000
2200
2400
2600
2800
3000
3200
3400



RECEIVED BY OWRD
APR 17 2014
SALEM, OR

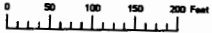
RECEIVED BY OWRD
MAR 27 2014
SALEM, OR

5-87272

Revised: DBJ
08/30/2013

& INDEX
02S45E31

THIS MAP WAS PREPARED FOR ASSESSMENT PURPOSE ONLY

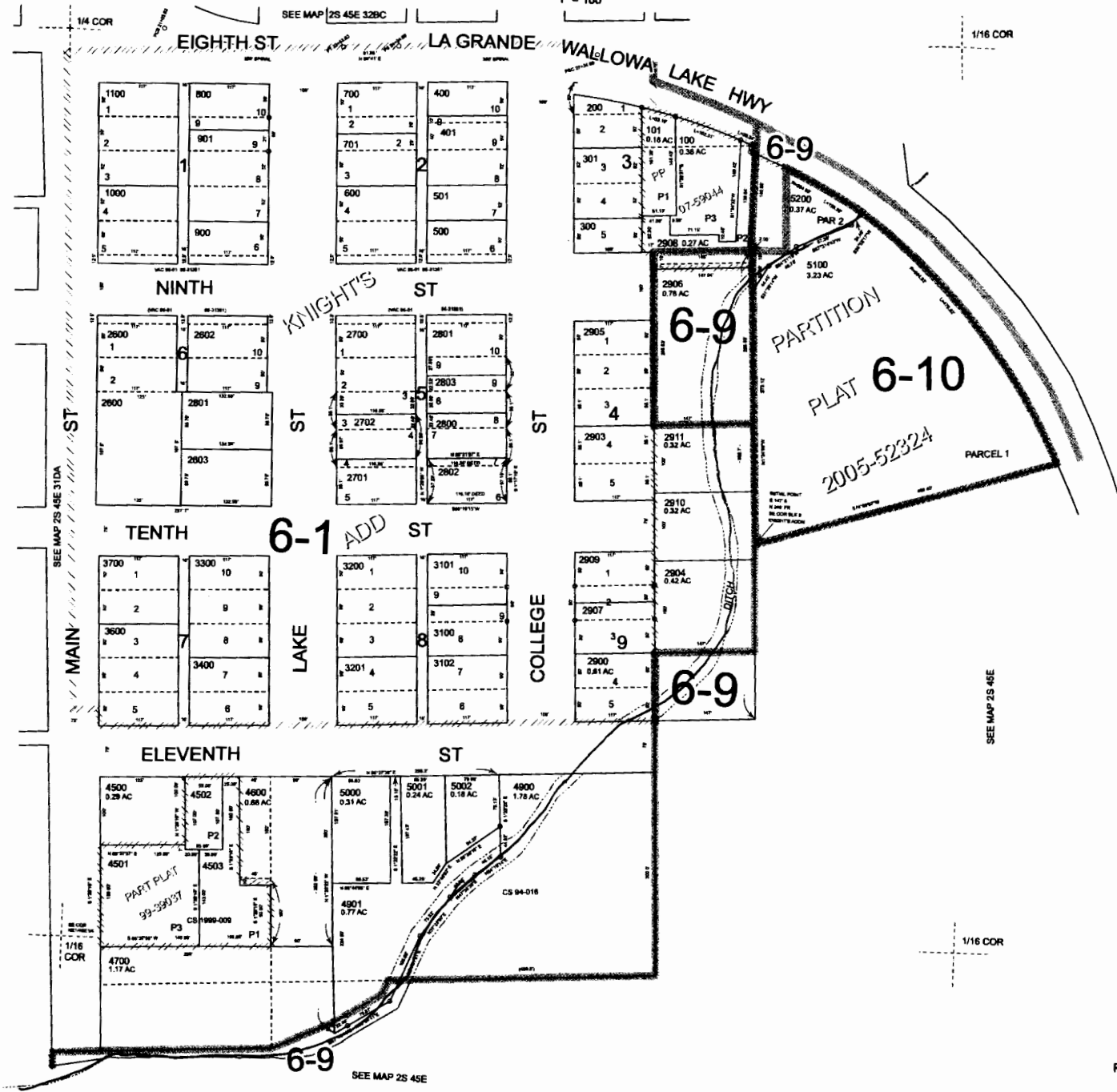


N.W. 1/4 S.W. 1/4 SEC. 32 T.2S. R.45E. W.M.
WALLOWA COUNTY

1" = 100'

02S45E32CB

- Cancelled
- 402 THRU
- 404
- 1200 THRU
- 2500
- 2801
- 2802
- 3000
- 3800 THRU
- 4405
- 4601
- 4600



RECEIVED BY OWRD

APR 17 2014

SALEM, OR

5-8-29-22

RECEIVED BY OWRD

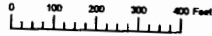
MAR 27 2014

SALEM, OR

Revised: converted
08/28/2013

02S45E32CB

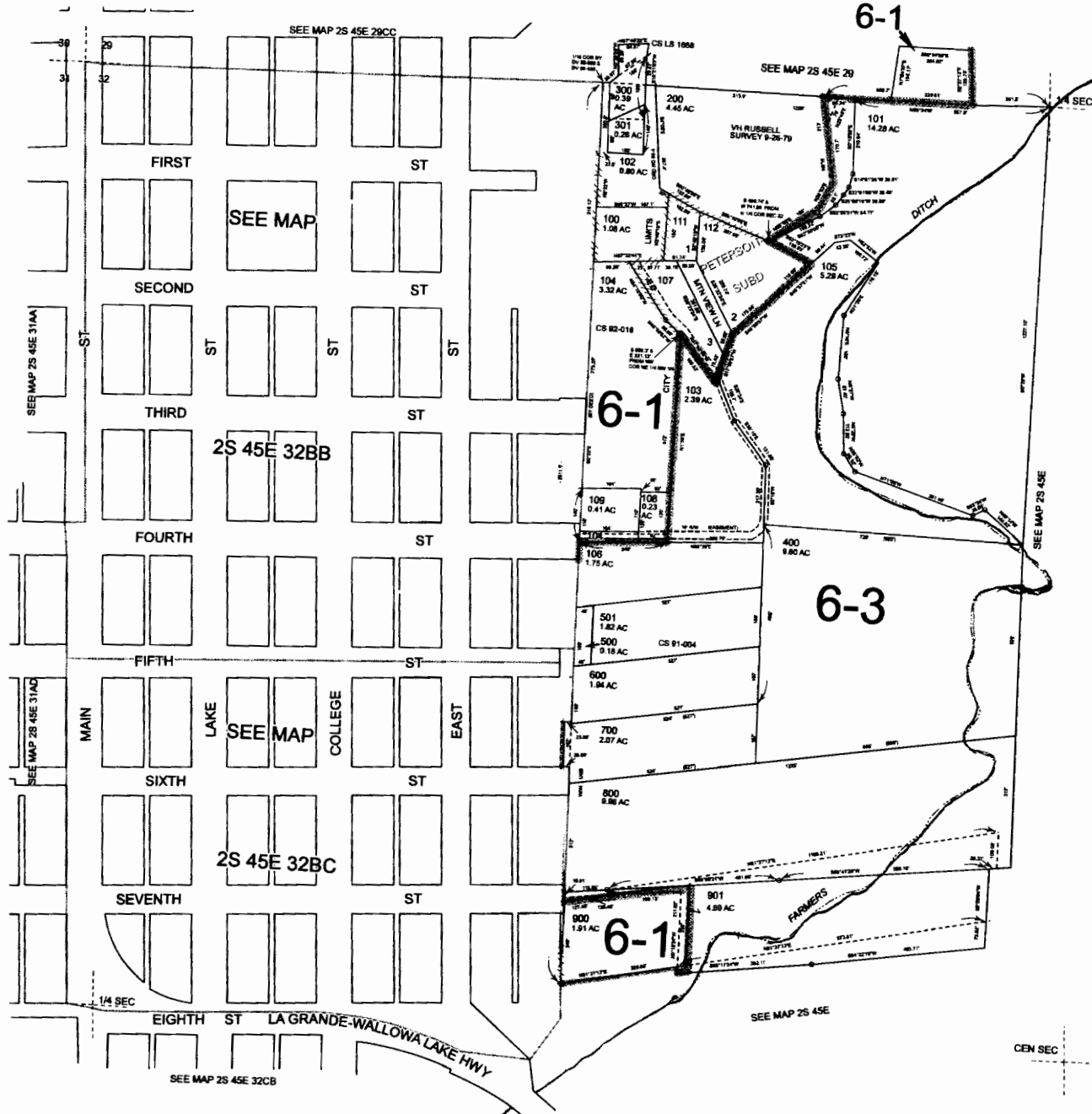
THIS MAP WAS PREPARED FOR
ASSESSMENT PURPOSE ONLY



N.W. 1/4 SEC. 32 T.2S. R.45E. W.M.
WALLOWA COUNTY
1" = 200'

02S45E32B

Cancelled
110
113
302
902



RECEIVED BY OWRD
APR 17 2014
SALEM, OR

5-81972

RECEIVED BY OWRD

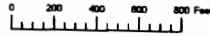
MAR 27 2014

SALEM, OR

Revised: converted
08/28/2013

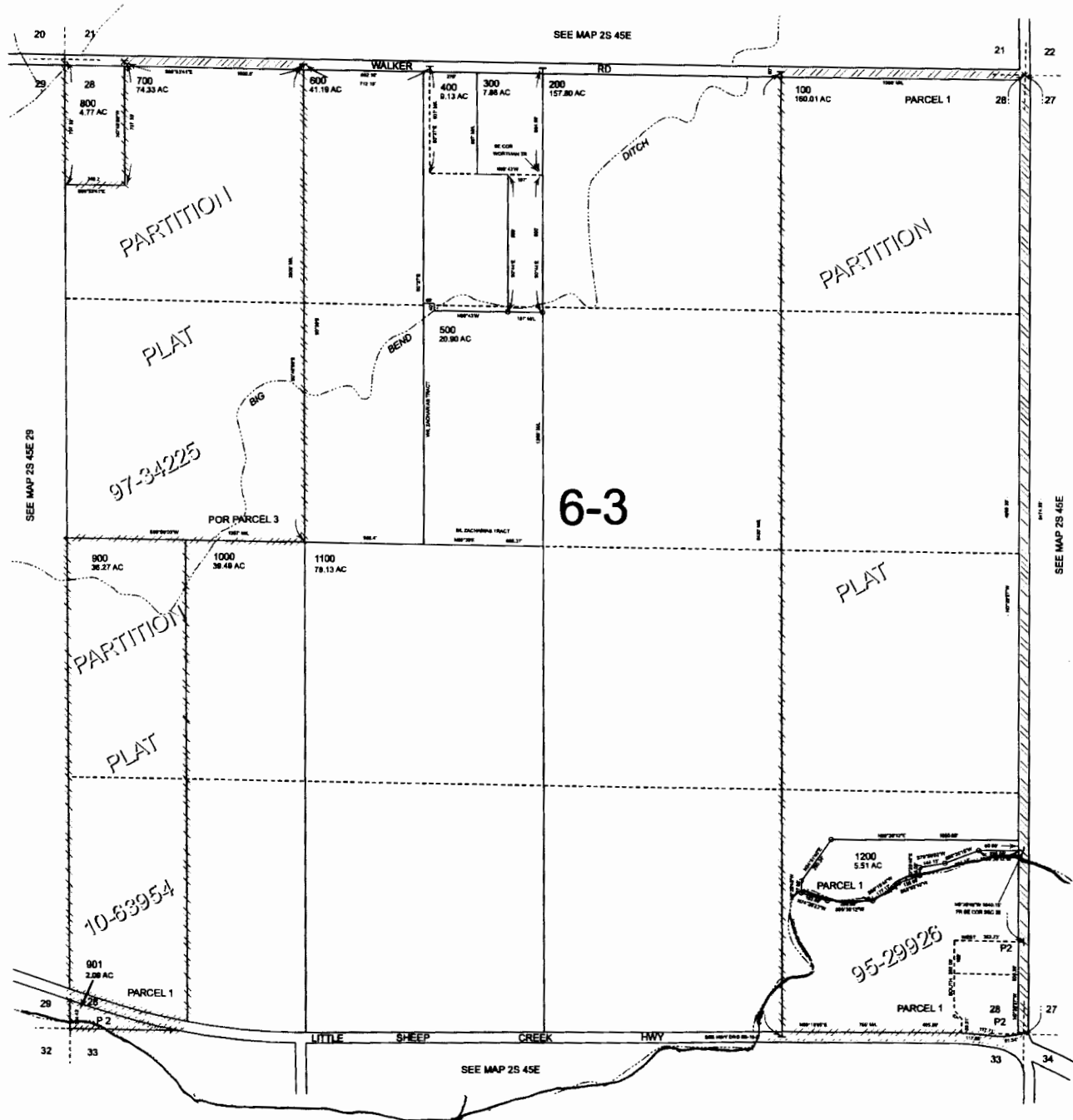
02S45E32B

THIS MAP WAS PREPARED FOR
ASSESSMENT PURPOSE ONLY



SECTION 28 T.2S. R.45E. W.M.
WALLOWA COUNTY
1" = 400'

02S45E28



RECEIVED BY OWRD
APR 17 2014
SALEM, OR

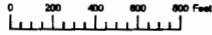
5-89972

RECEIVED BY OWRD
MAR 27 2014
SALEM, OR

Revised: converted
08/28/2013

02S45E28

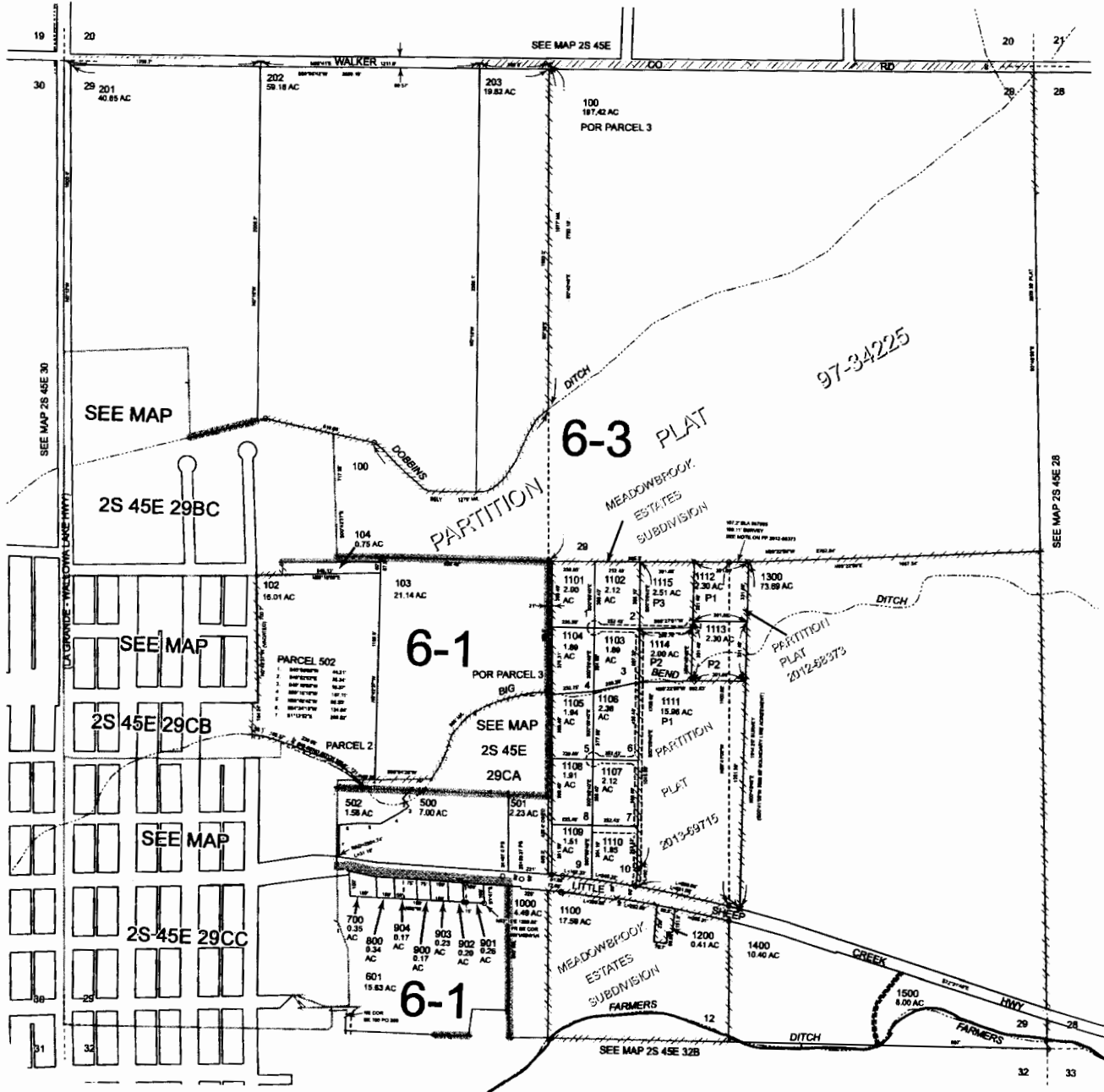
THIS MAP WAS PREPARED FOR ASSESSMENT PURPOSE ONLY



SECTION 29 T.2S. R.45E. W.M.
WALLOWA COUNTY
1" = 400'

02S45E29
& INDEX

- Cancelled
- 101
- 200
- 204
- 205
- 300
- 301
- 302
- 400
- 600
- 904



RECEIVED BY OWRD
MAY 17 2014
SALEM, OR

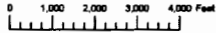
S-87972

RECEIVED BY OWRD
MAR 27 2014
SALEM, OR

Revised: DBJ
08/28/2013

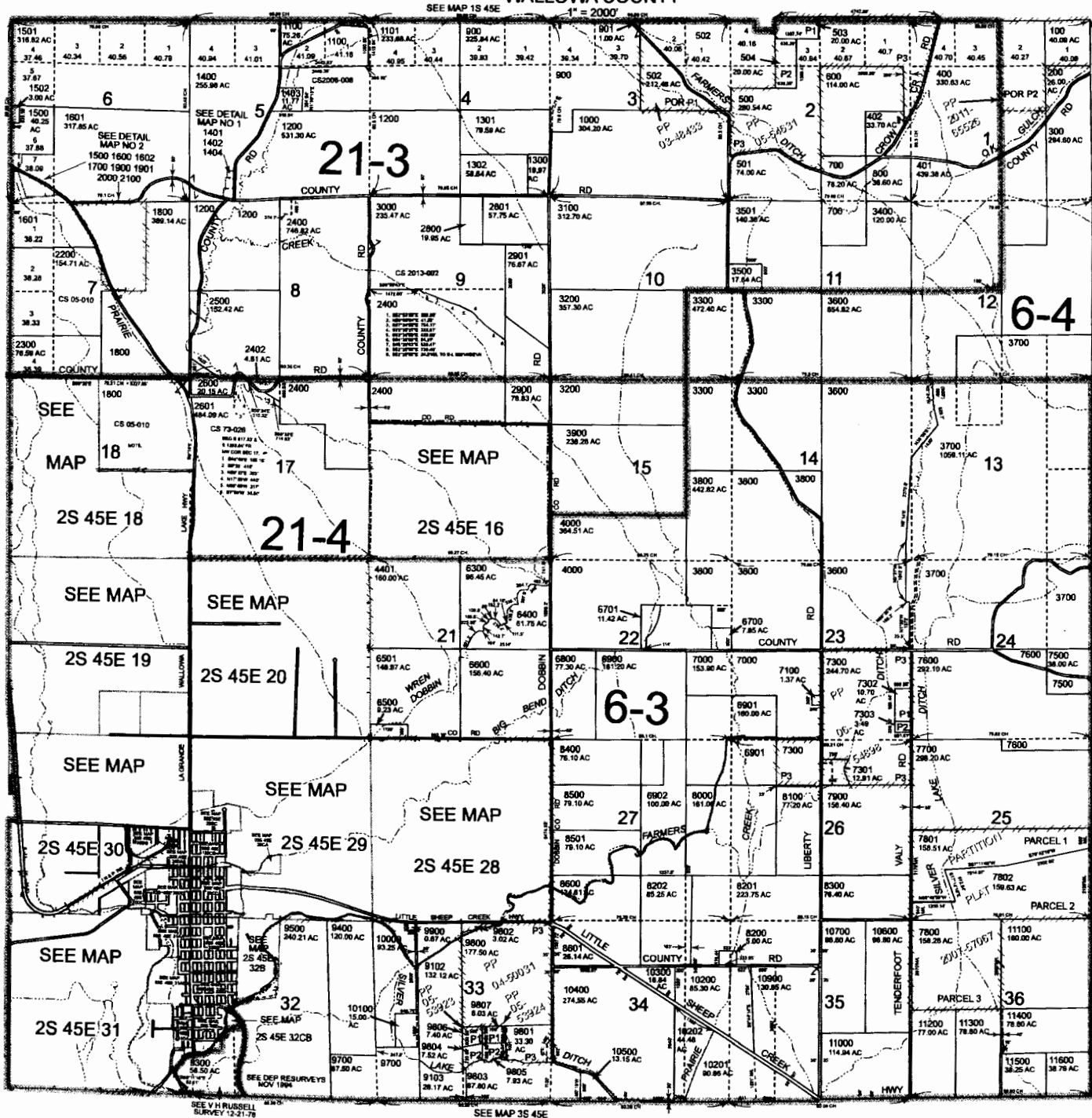
& INDEX
02S45E29

THIS MAP WAS PREPARED FOR ASSESSMENT PURPOSE ONLY



T.2S. R.45E. W.M. WALLOWA COUNTY

02S45E & INDEX



- Cancelled
- 2401
- 1401
- 1404
- 1402
- 1600
- 1602
- 1700
- 1900
- 1801
- 2000
- 2100
- 2403
- 3701 thru
- 3708
- 4100 thru
- 4400
- 4500 thru
- 6207
- 6702
- 6703
- 7200
- 7400
- 8203
- 8700 thru
- 9101
- 9200
- 9600 thru
- 9606
- 10800
- 10901

RECEIVED BY OWRD
APR 17 2014
SALEM, OR

S-09972

RECEIVED BY OWRD

MAR 27 2014

SALEM, OR

Revised: DBJ
09/04/2013

& INDEX
02S45E

THIS MAP WAS PREPARED FOR ASSESSMENT PURPOSE ONLY

0 1,000 2,000 3,000 4,000 Feet

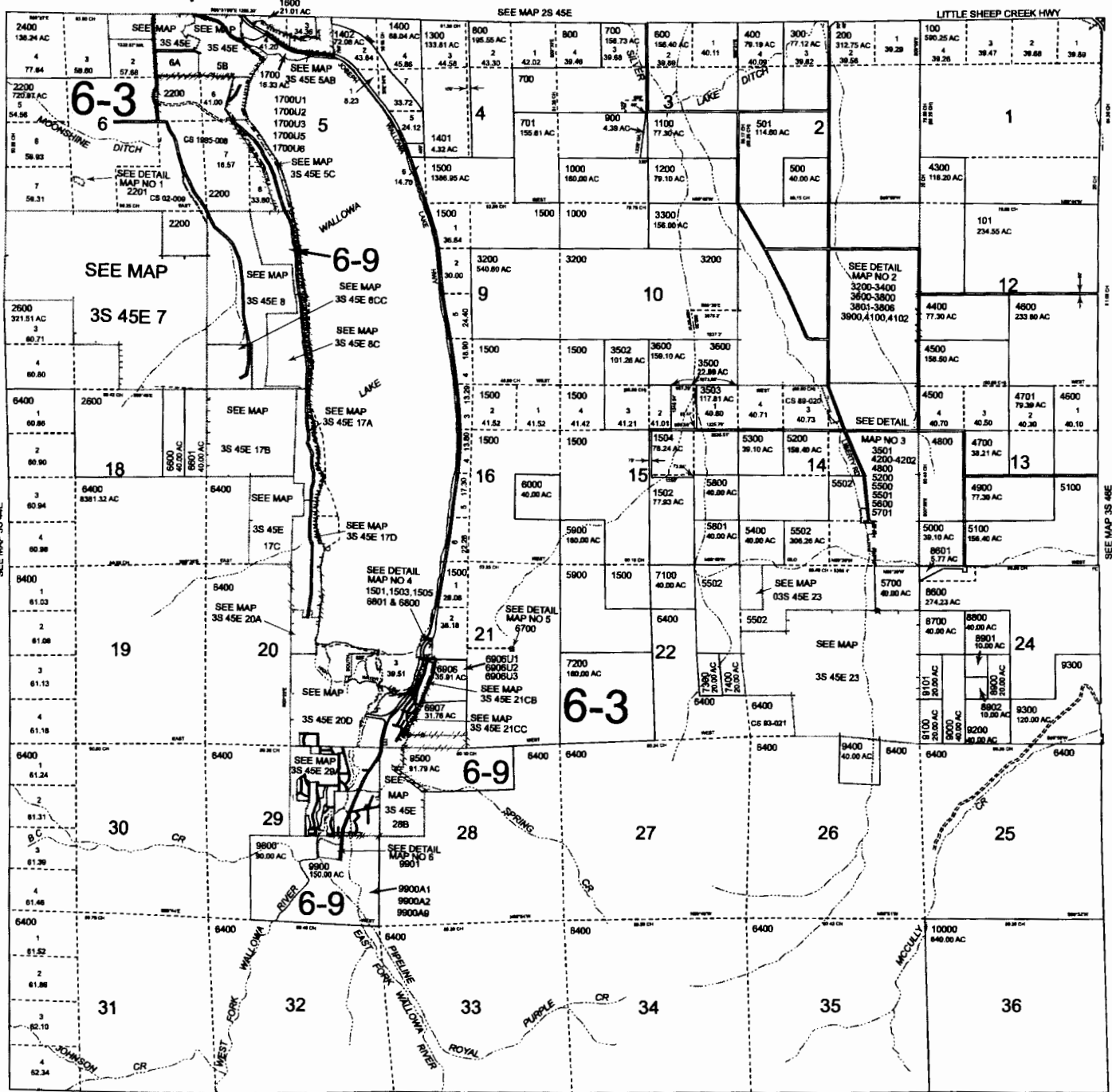
T.3S. R.45E. W.M.

1" = 2000'

point of diversion WALLOWA COUNTY

03S45E & INDEX

- Cancelled
- 1700U4
- 1701U1 THRU
- 1701U3
- 1701U5
- 1701U8
- 1800
- 1900 THRU
- 1902
- 2000 THRU
- 2012
- 2099
- 2100
- 2300
- 2700 THRU
- 2738
- 2800 THRU
- 2806
- 2900 THRU
- 3105
- 3504
- 4000
- 4101
- 4203
- 5101
- 5301
- 6100 THRU
- 6107
- 6200 THRU
- 6300 THRU
- 6313
- 6500 THRU
- 6502
- 6900 THRU
- 6905
- 7000 THRU
- 7002
- 7500 THRU
- 8500
- 8602
- 9501 THRU
- 9505
- 9600
- 9700 THRU
- 9702



RECEIVED BY OWRD
 APR 17 2014
 SALEM, OR

S-8772

RECEIVED BY OWRD
 MAR 27 2014
 SALEM, OR

Revised: converted
 02/20/2014
 & INDEX
 03S45E