

RECEIVED BY OWRD

APR 08 2014

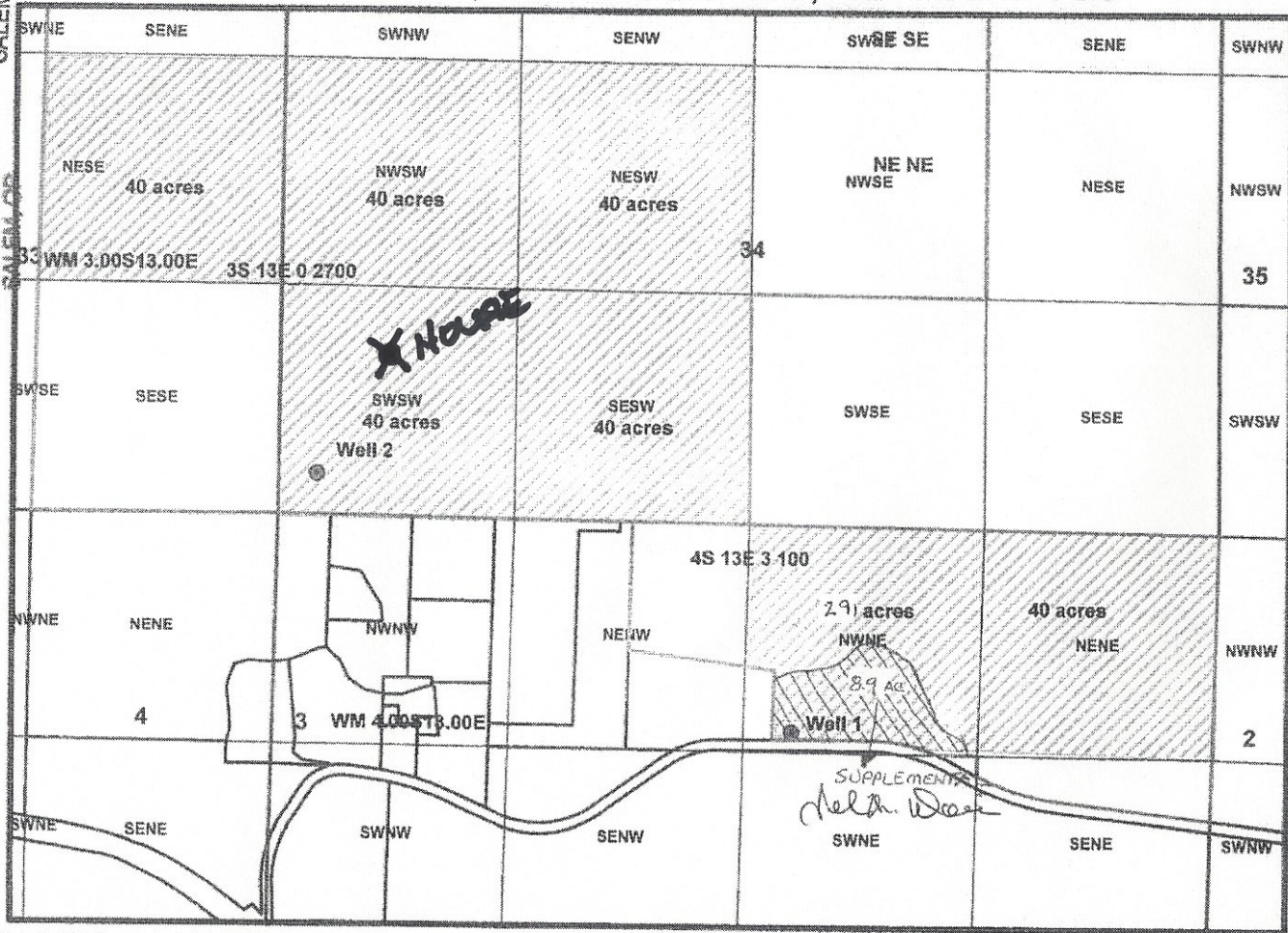
APR 28 2014

SALEM, OR

SALEM, OR

Davis GW Application Map

3S 13E 0 2700, 3S 13E 33 100, 4S 13E 3 100



6-17852

Well 1: 2,405 ft west and 1,128 ft south of the Northeast Corner, Section 3, being in the NW-NE Section 3, T4S R13E WM. Well 2: 5,068 ft west and 227 ft north of the Southeast Corner, Section 34, being in the SW SW Section 34, T3S R13E WM. Scale: 1" = 800'

John M. Davis - CHAIRMAN APPROVED.