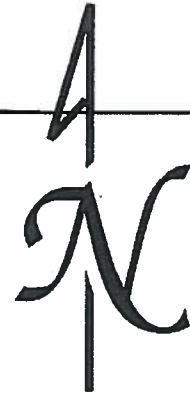


SEC.5 T7S R5W WM
POLK COUNTY

Scale 1" = 400'

32 33
5 4



See Map 6.5.32

See Map 6.5.32

207
PARCEL 1
80.24 AC

21-7

100
PT PARCEL 1
59.86 AC

LOT 1
19.69 AC.

PT. LOT 19.69 AC.

206
4.51 AC
PARCEL 2

201
PT PARCEL 3

2-3

LOT 2
19.00 AC.

PT 2000-0011

Res. 1
Res. 2

204
80.05 AC.
Parcel 2

202
56.00 AC.

208
.27 AC

N.E. CORNER
DLC NO. 39

900
43.15 AC

200
98.95 AC

NE CORNER
OF BOR 2-893

LOT 3
27.07 AC.

Res. 3
Res. 4
Res. 5

Res. 6
Res. 7

Res. 8

LOT 4
49.04 AC.

PAR 2000-0005

INT. CORNER
DLC NO. 39

800
PARCEL 1
40.76 AC

800

800

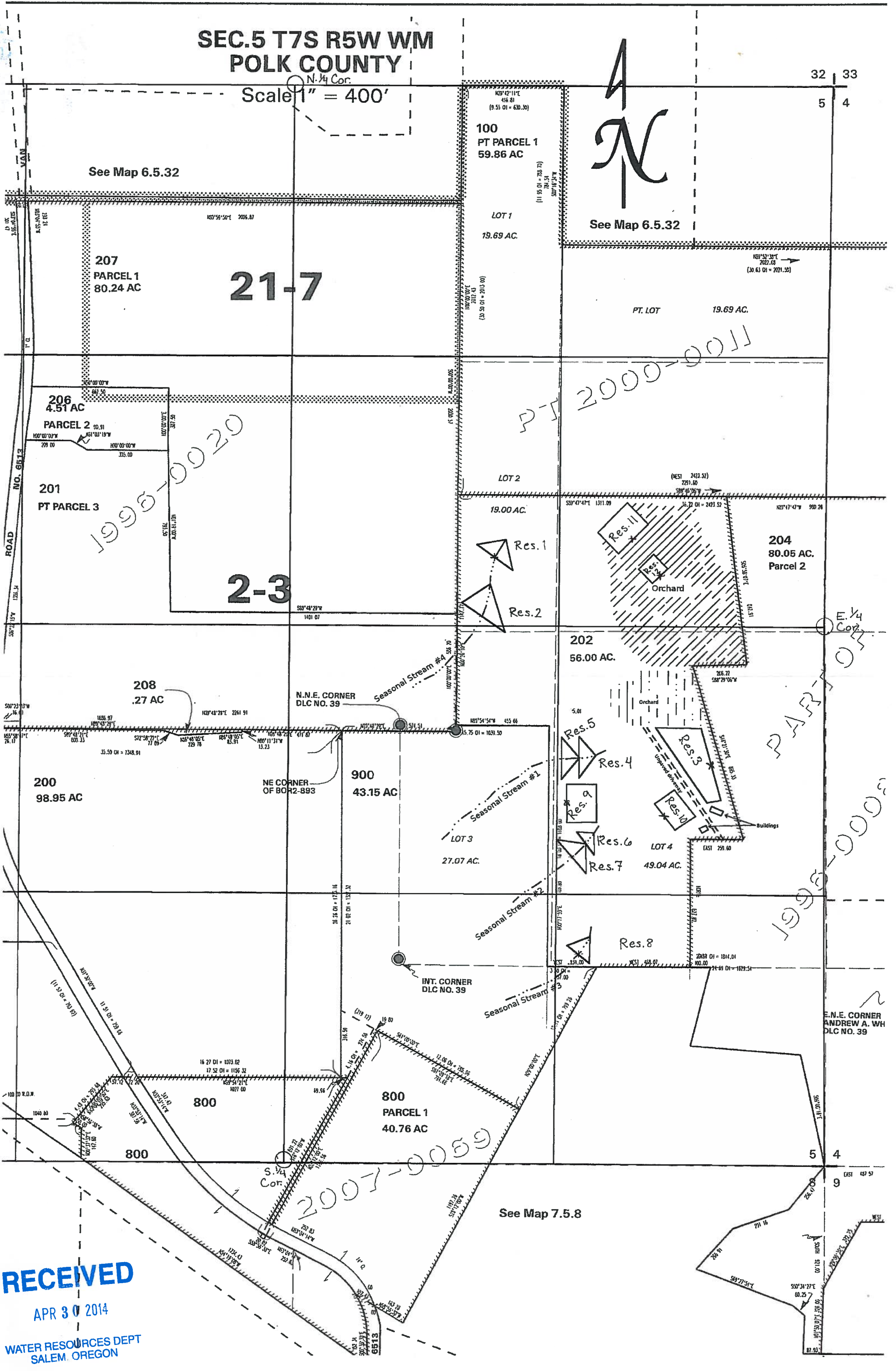
See Map 7.5.8

E.N.E. CORNER
ANDREW A. WH
DLC NO. 39

RECEIVED

APR 30 2014

WATER RESOURCES DEPT
SALEM, OREGON

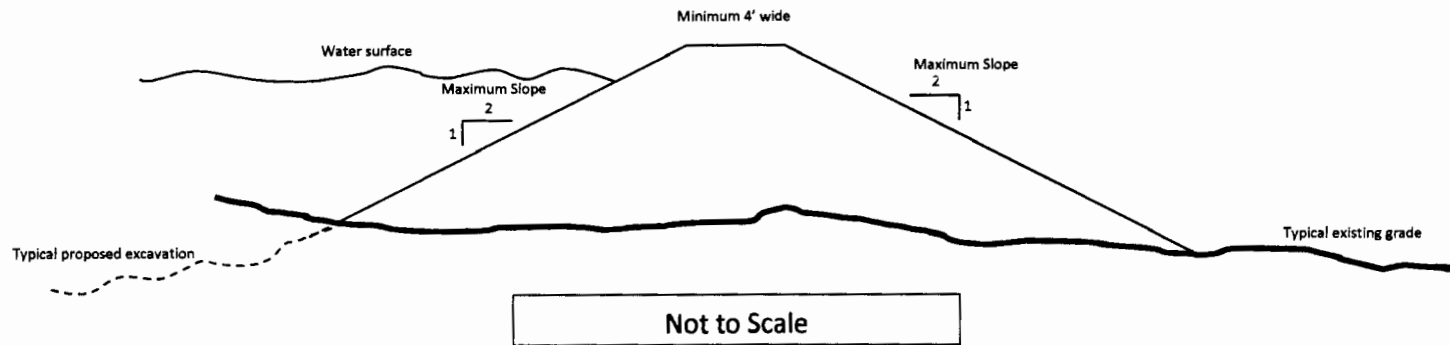


APR 30 2014

RECEIVED

Typical Cross Section

(not to scale)



Mark Wetzler Reservoirs	
Date Drawn: 2014.04.02	Drawn by: WEF
Revision: 0	Water Right App R-
Typical Dam Cross Section	
Applicant's signature confirming review: _____	
Date: _____	