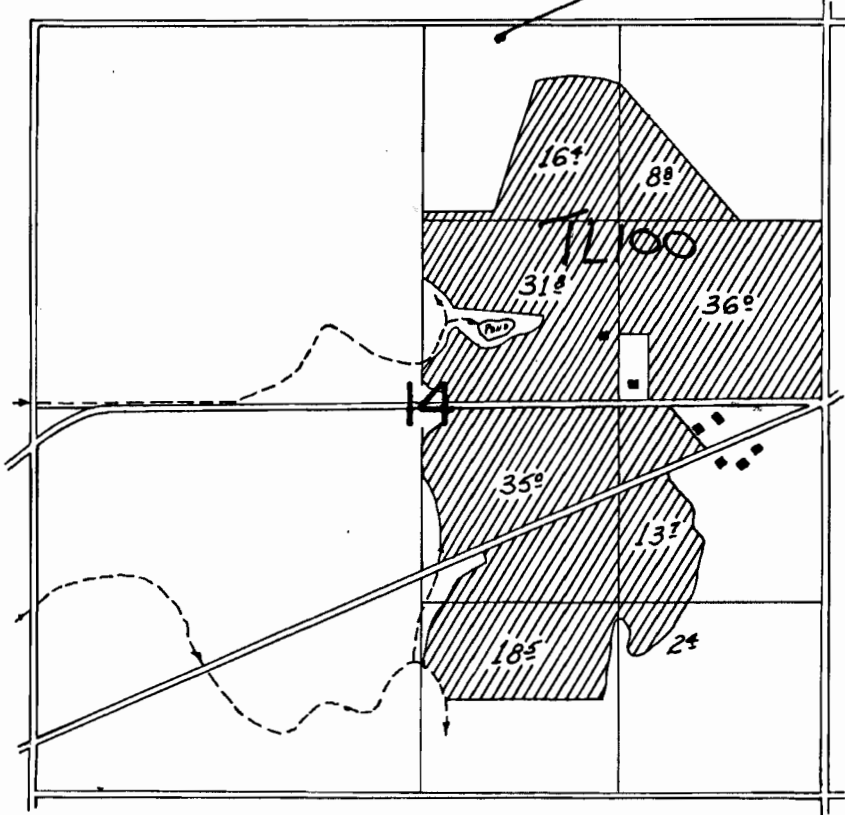


T 39 S, R 19 E, W.M.

well 1



well 1 2112 ft West and 132 ft South
 of the NE quarter corner of Section
 14, T39S, R19E, T100

Application No. ~~37002~~

~~_____~~

~~1" = 22'~~

1" = 1320'

RECEIVED BY OWRD

MAY 12 2014

SALEM, OR

G-7857

THIS MAP WAS PREPARED FOR
ASSESSMENT PURPOSE ONLY

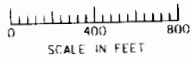
SECTION 14 T.39S. R.19E. W.M.
LAKE COUNTY

1" = 400'

39 19 14

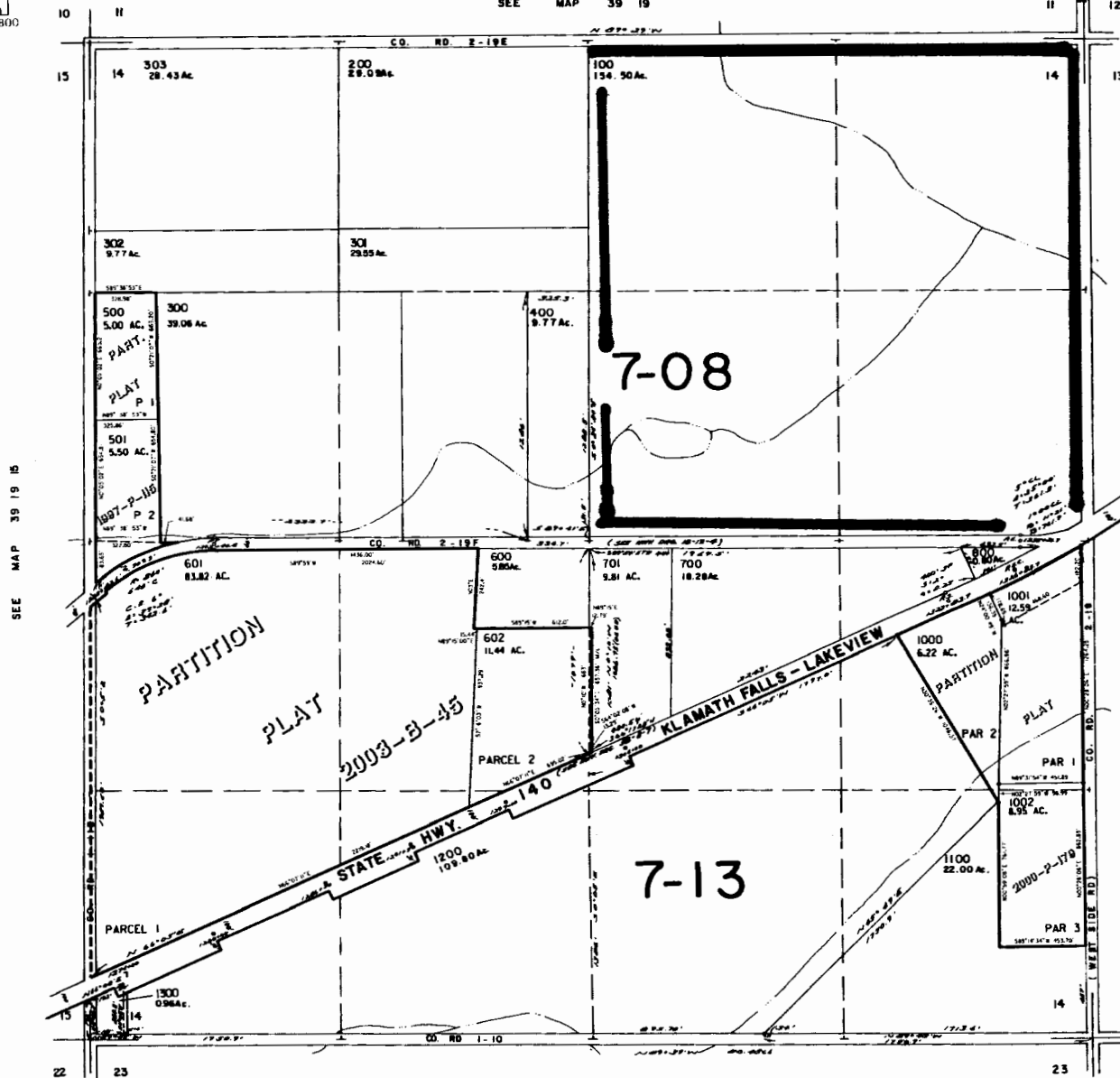
CANCELLED NO.

900



SCALE IN FEET

SEE MAP 39 19



SEE MAP 39 19 18

SEE MAP 39 19 13

RECEIVED BY OWRD

MAY 12 2014

SALEM, OR

G-7857

SEE MAP 39 19 23

Revised
4/29/2003, CS

39 19 14