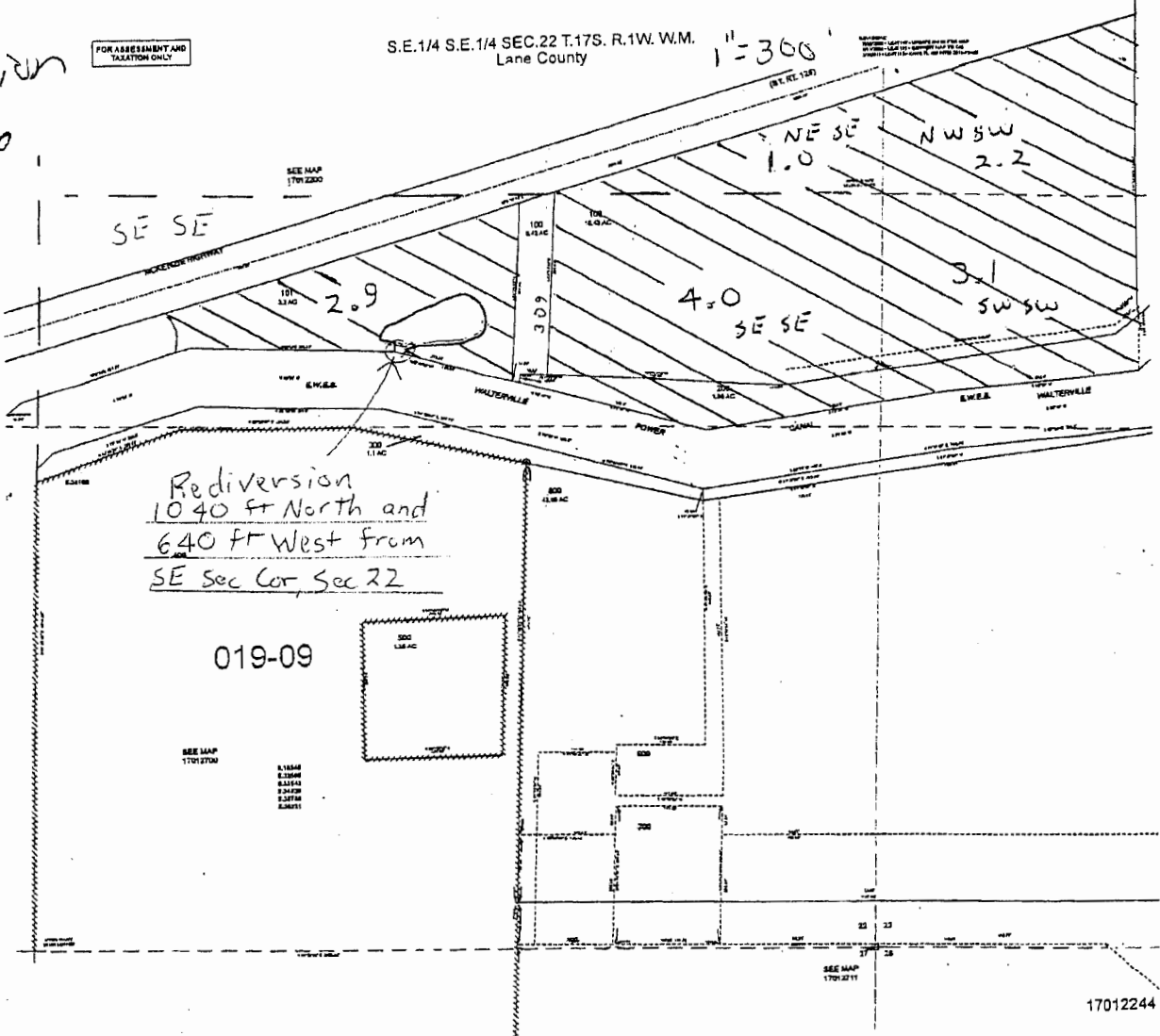


Rick Manion
 Revised Map
 5-28-2014
 M.M.

FOR ASSESSMENT AND
 TAXATION ONLY

S.E.1/4 S.E.1/4 SEC.22 T.17S. R.1W. W.M.
 Lane County

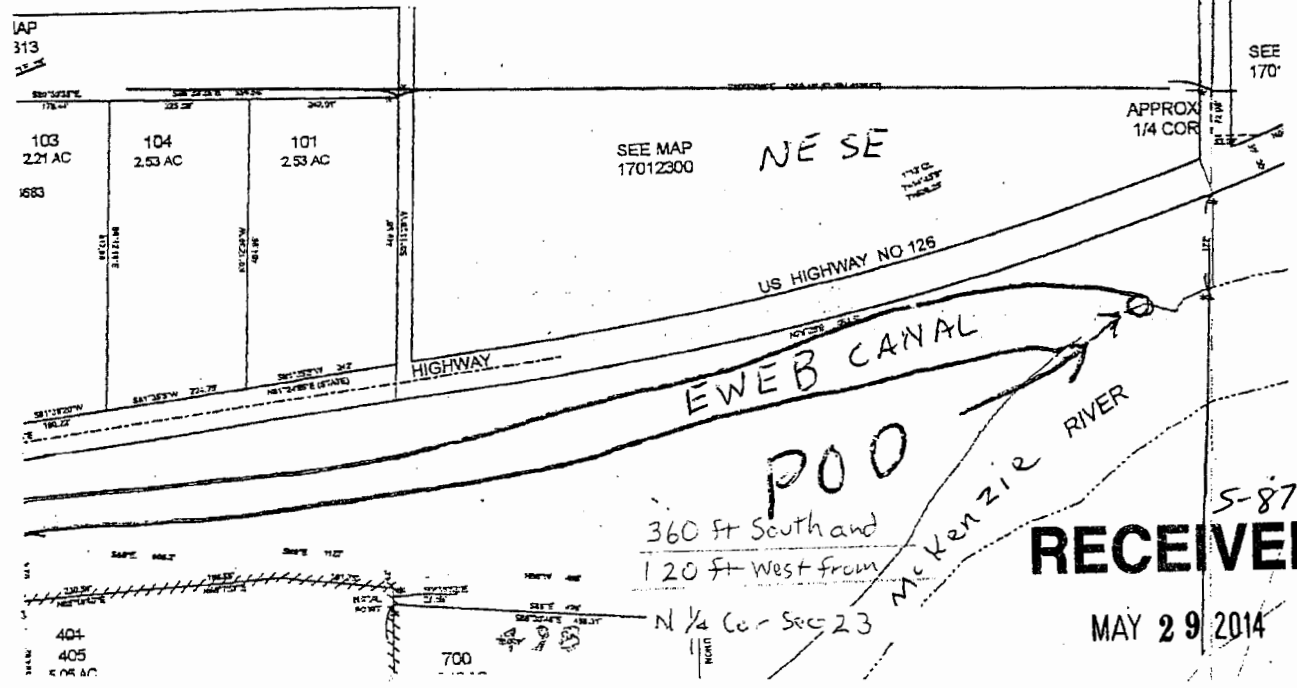
1" = 300'



17012244

S.E.1/4 SEC.23 T.17S. R.1W. W.M.
 Lane County

1" = 300'



SEE 170'

5-87990
RECEIVED
 MAY 29 2014

WATER RESOURCES DEPT
 SALEM, OREGON