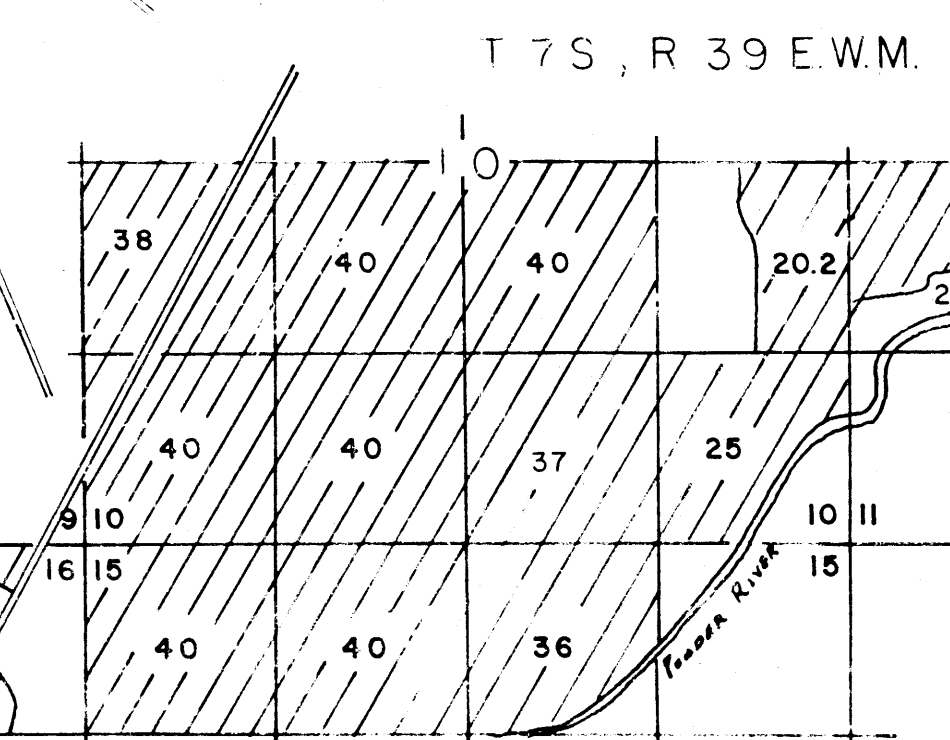
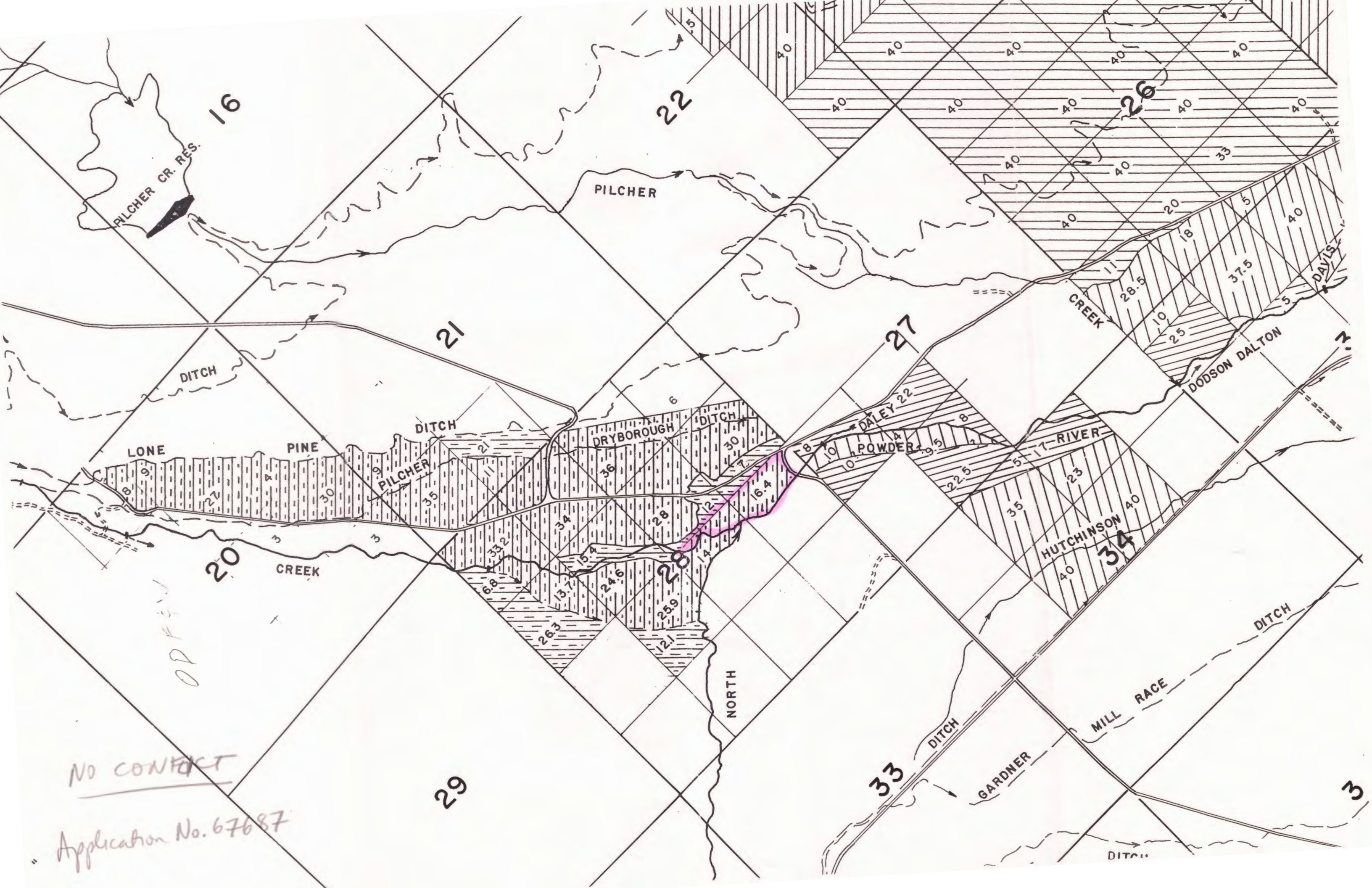


- ANTHONY CREEK DITCHES
- CARNES 1400' S., 3500' W. OF NW COR. SEC. 16, T.6 S., R.38 E.W.M.
- COUGHANOUR 1300' S., 2400' E. "
- LONE PINE 2400' N., 100' E. OF SW COR. SEC. 17, T.6 S., R.38 E.W.M.
- PILCHER DRYBOROUGH 650' N., 1400' E. "
- PUNCH & KELLOGG 1200' S., 1900' E. "
- MASON 700' S., 400' E. OF NW COR. SEC. 28, T.6 S., R.38 E.W.M.
- NORTH POWDER RIVER DITCHES
- HUTCHINSON HILLSIDE GARDNER MILLRACE 150' S., 2400' W. FROM SE COR. SEC. 32, T.6 S., R.38 E.W.M.
- POWERS CO. 1000' N., 1700' W. "
- DALEY 2300' N., 400' E. FROM SW COR. SEC. 27, T.6 S., R.38 E.W.M.
- DODSON DALTON 1200' S., 10' E. FROM NW COR. SEC. 35, T.6 S., R.38 E.W.M.
- DAVIS KELSEY 1800' S., 2500' W. FROM NE COR. SEC. 35, T.6 S., R.38 E.W.M.
- DAVIS DALTON 2100' S., 1400' W. "
- SUNNYSLOPE 2800' S., 400' E. "
- KELSEY, KELSEY WILSON 1100' N., 2800' W. FROM SE COR. SEC. 36, T.6 S., R.38 E.W.M.
- SMITH, MCPHEE & TANNER 1400' N., 600' E. FROM SW COR. SEC. 32, T.6 S., R.39 E.W.M.
- MCPHEE 1000' S., 250' E. FROM NW COR. SEC. 33, T.6 S., R.39 E.W.M.
- JACOBSON 150' N., 2100' E. "
- HARLAN SANDERS 300' N., 3300' E. "
- LUN 2450' N., 200' E. FROM SW COR. SEC. 27, T.6 S., R.39 E.W.M.
- HOLMES, PETERSON 2100' N., 700' W. FROM SE COR. SEC. 22, T.6 S., R.39 E.W.M.

- PRIMARY ANTHONY CR., SUPPL. PILCHER CR., PILCHER CR. RES.
- SUPPL. PILCHER CR., PILCHER CR. RES.
- PRIMARY N. POWDER RIV.; SUPPL. ANTHONY CR., PILCHER CR., PILCHER CR. RES.
- SUPPL. ANTHONY CR., PILCHER CR., PILCHER CR. RES.
- SUPPL. PILCHER CR., PILCHER CR. RES.
- SUPPL. EXCHANGE—RES. ONLY
- PRIMARY ANTHONY CR., SUPPL. PILCHER CR. RES.—EXCHANGE

1 CORRECTED THE MAP AS REQUESTED 2/14/68  
S.B. M.B.R.





NO CONTACT

Application No. 67687