

THIS MAP WAS PREPARED FOR ASSESSMENT PURPOSE ONLY

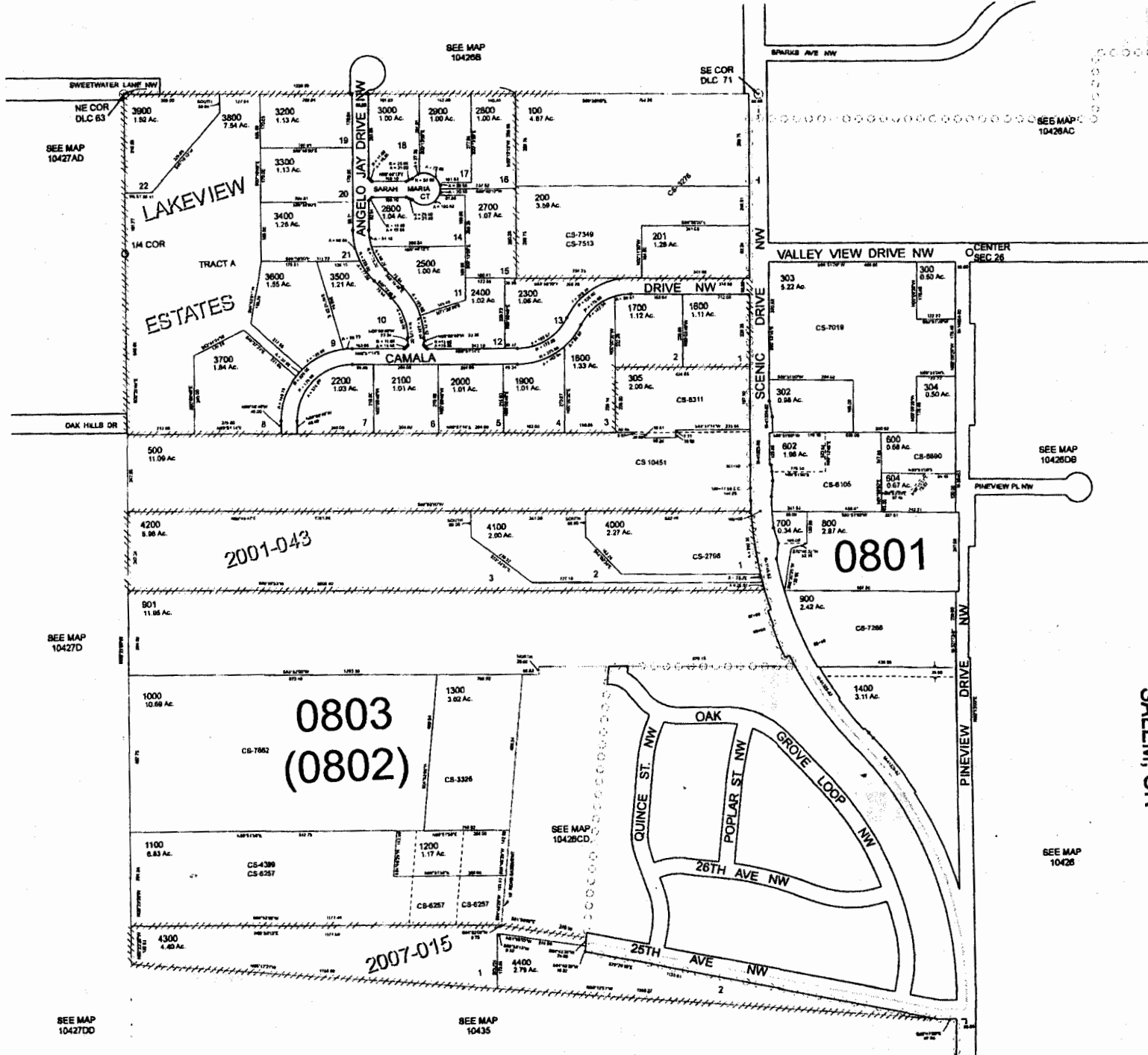
S.W.1/4 SEC.26 T.10S. R.4W. W.M.
BENTON COUNTY
1" = 200'



10426C

REV: 02-02-2011

- CANCELLED:
- 603
- 601
- 301
- 400
- 605
- 805
- 801
- 1101
- 1102
- 1201
- 1500
- 306
- 501



SEE MAP 10428DB

SEE MAP 10426

SEE MAP 10427D

SEE MAP 10427DD

SEE MAP 10435

RECEIVED BY OWRD

JUN 03 2014

SALEM, OR

10426C

RECEIVED BY OWRD

Lakeview Estates Homeowner's Association

1" = 1320'

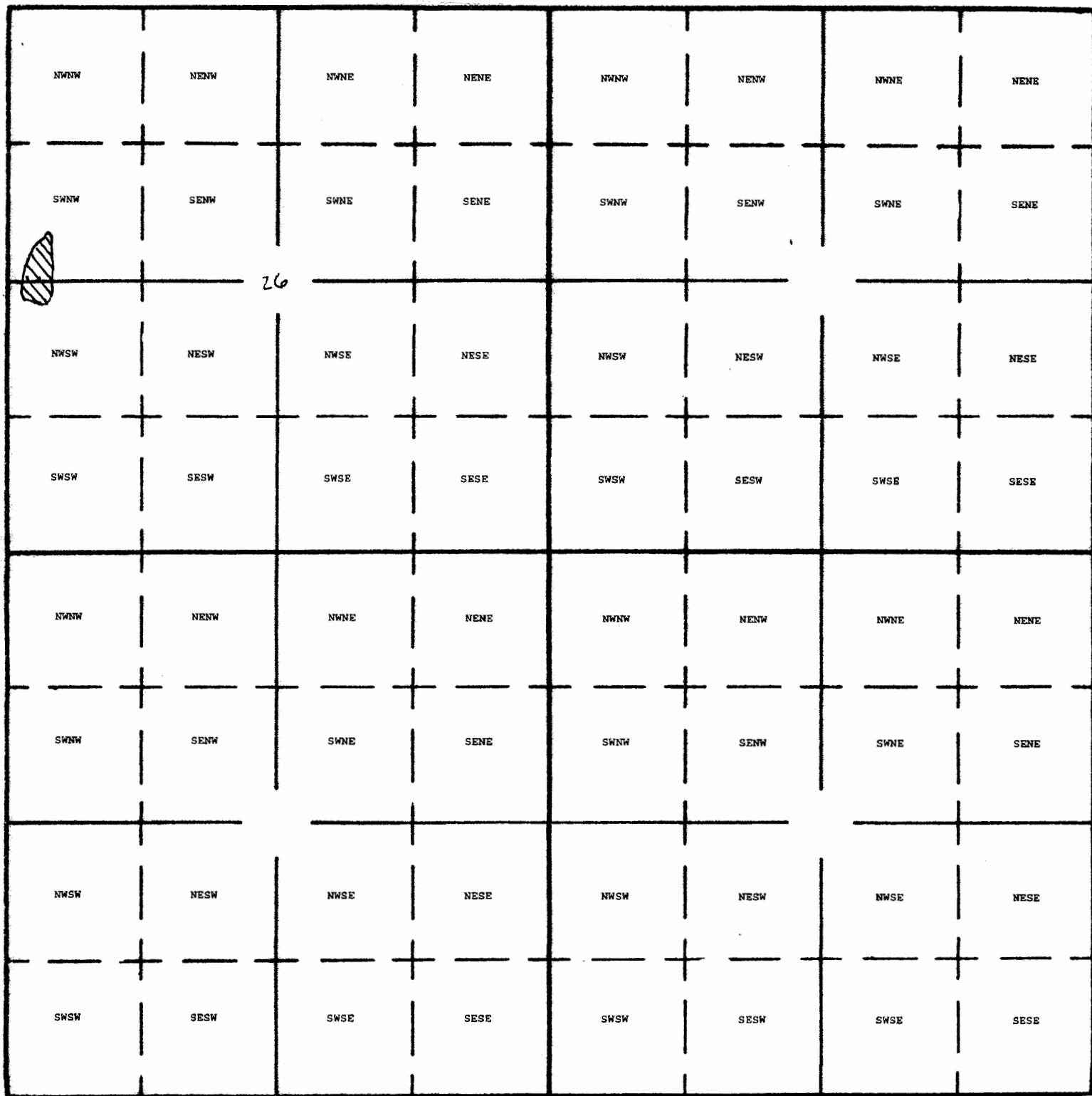
Tax Lot: 3800

10 South, 4 West, Section 26

JUN 03 2014



SALEM, OR



Dam Location: 230 Feet South and 280 Feet East from W1/4 of Section 26

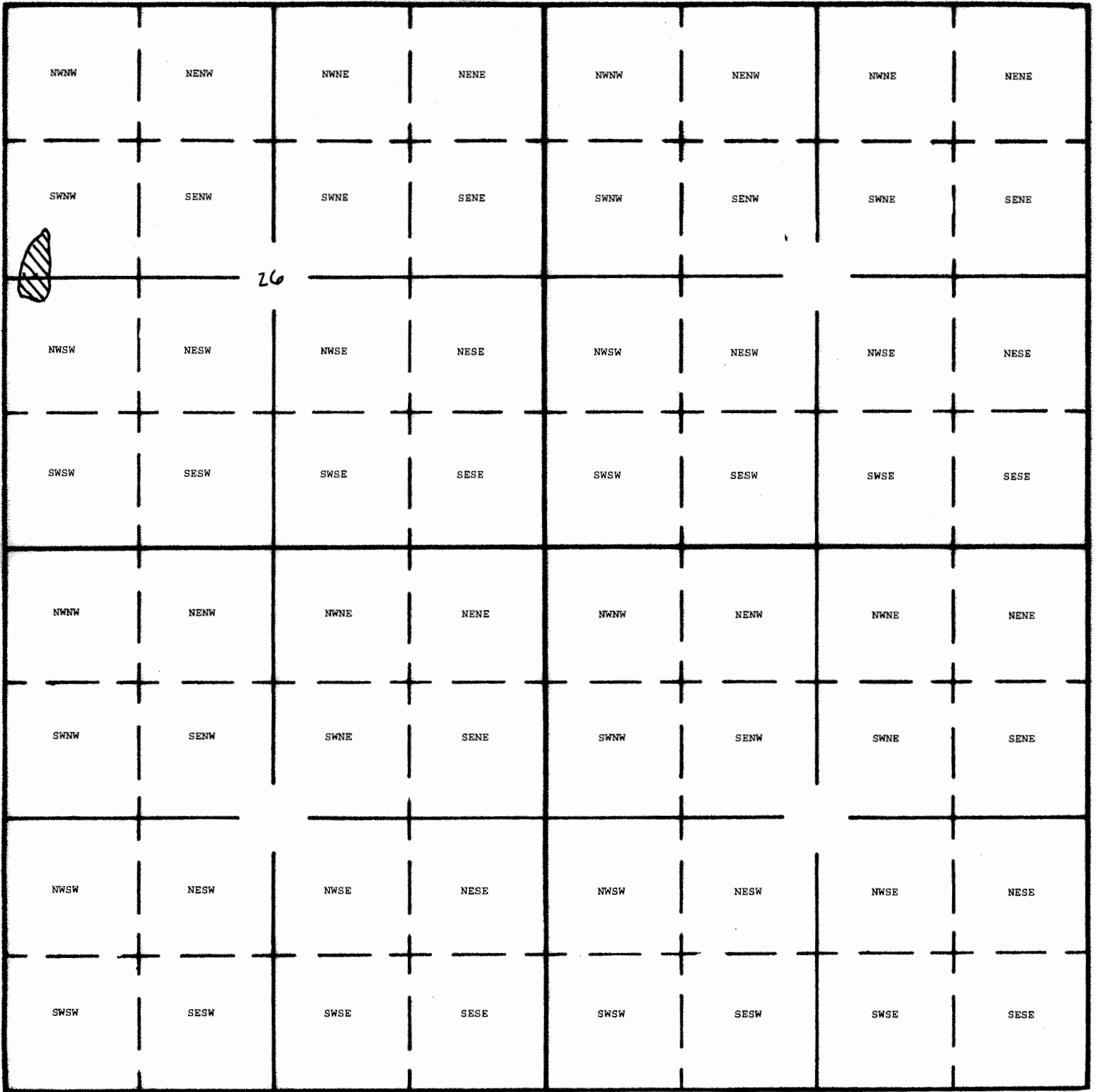
Lakeview Estates Homeowner's Association

1" = 1320'

Tax Lot: 3800



10 South, 4 West, Section 26



South

RECEIVED BY OWRD

Dam Location: 230 Feet South and 280 Feet East from W1/4 of Section 26

JUN 11 2014

RS R-87981

SALEM, OR