

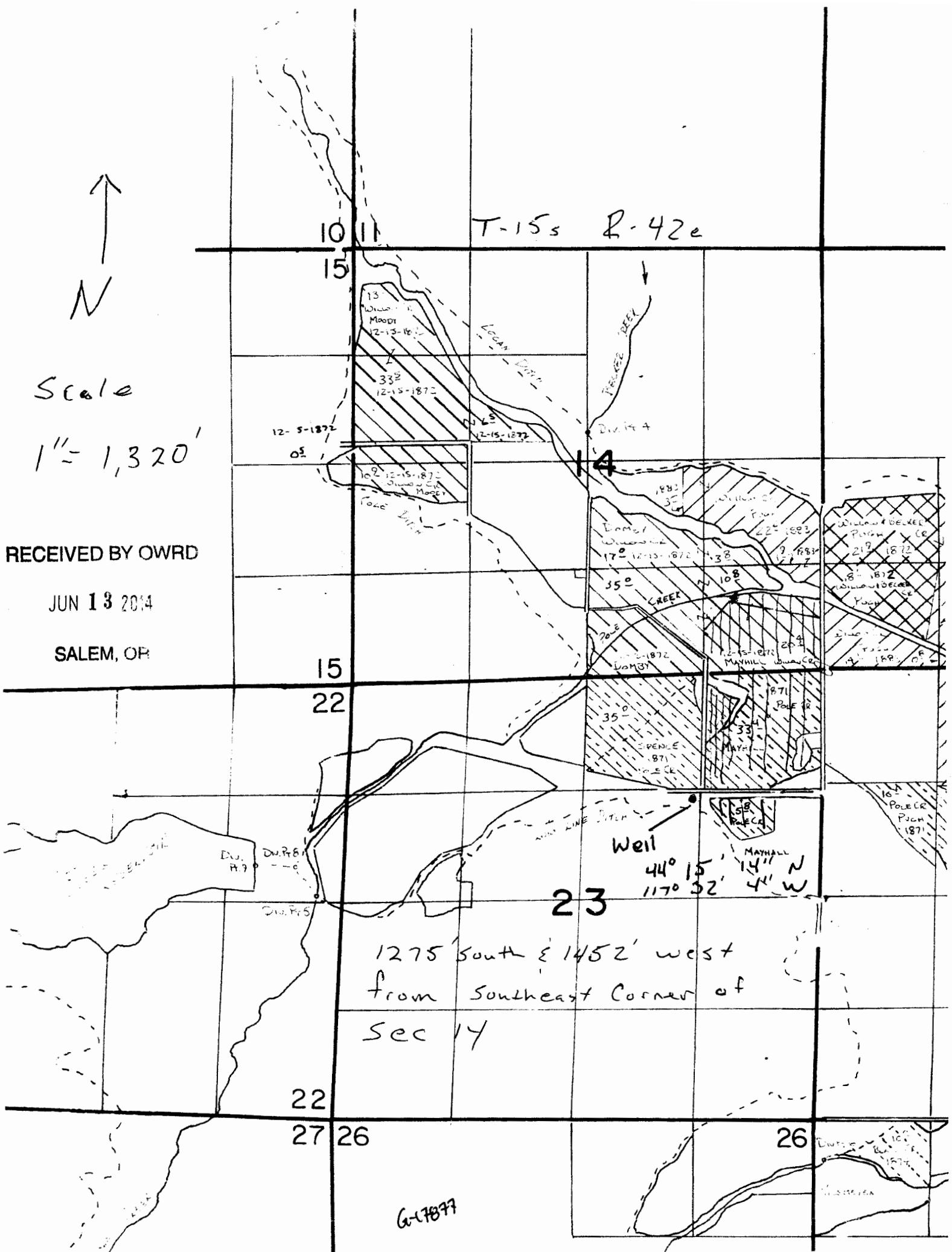
Scale

1" = 1,320'

RECEIVED BY OWRD

JUN 13 2014

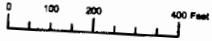
SALEM, OR



1275' South & 1452' West
 from Southeast Corner of
 Sec 14

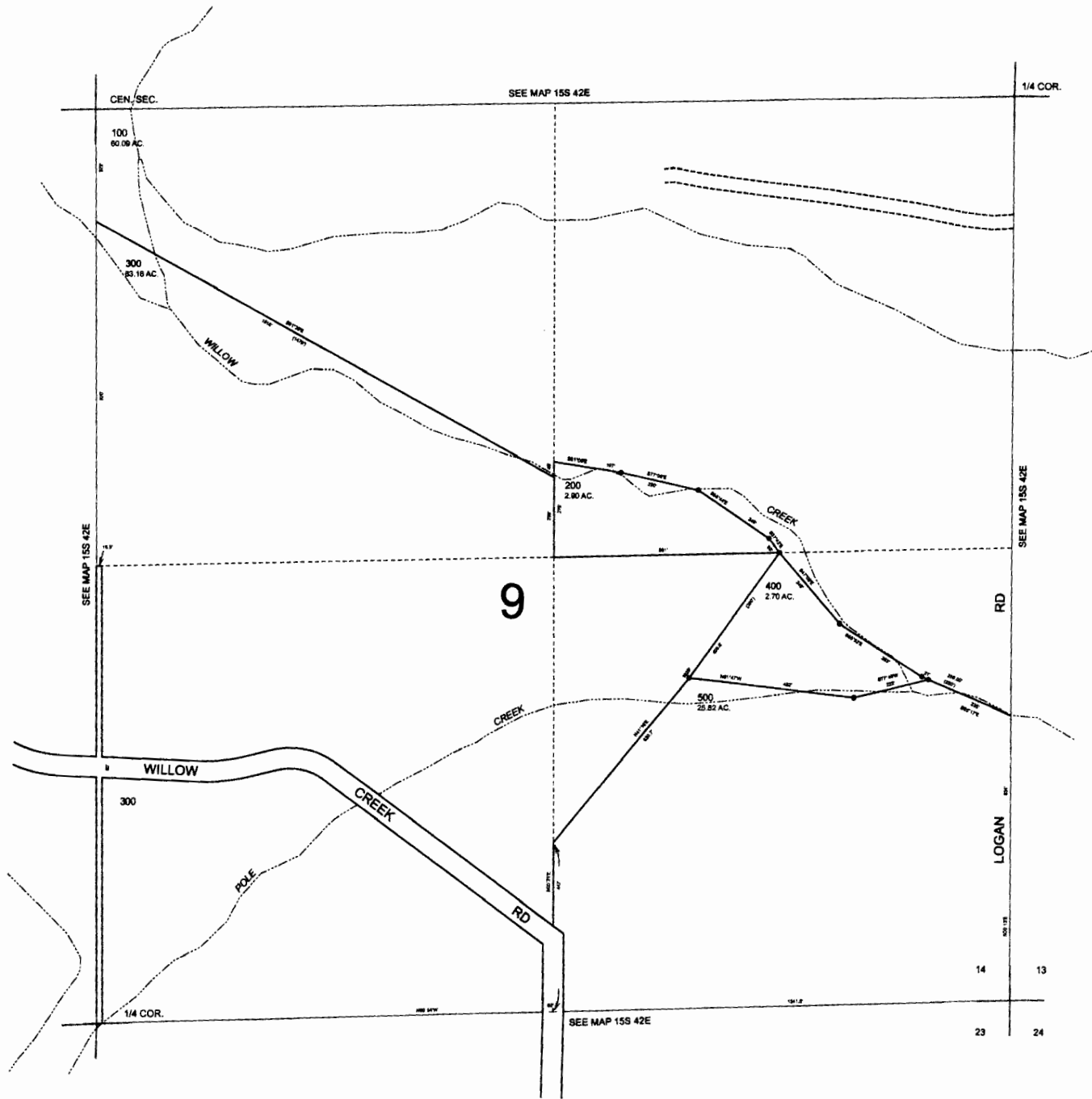
G-17877

THIS MAP WAS PREPARED FOR
ASSESSMENT PURPOSE ONLY



SE1/4 SECTION 14 T.15S. R.42E. W.M.
MALHEUR COUNTY
1" = 200'

15S 42E 14D



RECEIVED BY OWRD

1 8 2014

SALEM, OR

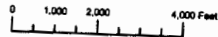
G-17677

RECEIVED BY OWRD

JUN 13 2014

SALEM, OR

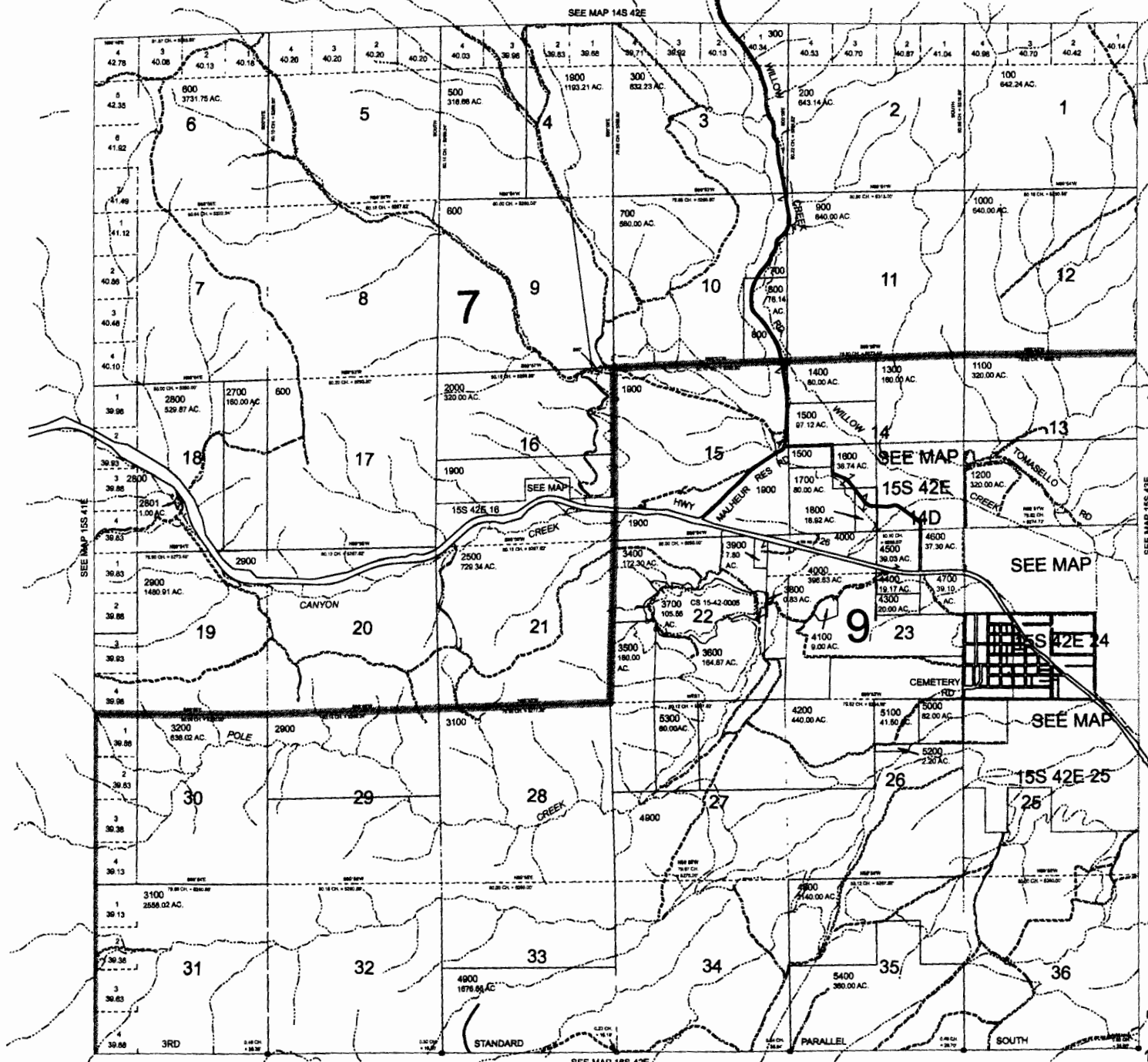
THIS MAP WAS PREPARED FOR ASSESSMENT PURPOSE ONLY



T.15S. R.42E. W.M. MALHEUR COUNTY 1" = 2000'

15S42E & INDEX

CANCELLED:
400
1990
2100 THRU
2400
2590
2800
2890
2990
3300



RECEIVED BY OWRD

JUN 13 2014

SALEM, OR

G-17877

SEE MAP 15S 42E

SEE MAP 15S 41E

SEE MAP 16S 42E

Revised: MA 1/11/2010

15S42E & INDEX