

# APPLICATION TO STORE WATER

RECEIVED BY OWRD

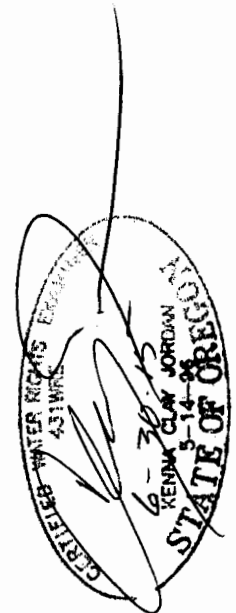
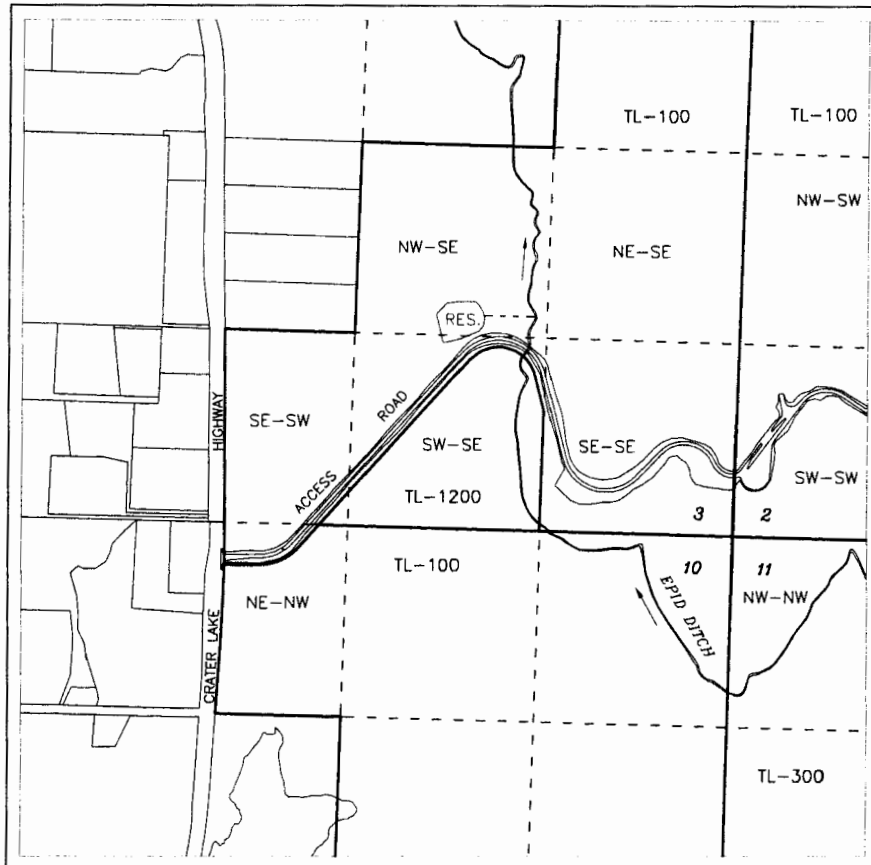
## ALTERNATE REVIEW PROCESS

JUN 12 2014

IN THE NAME OF FREEL & ASSOCIATES, LLC

SALEM, OR

TOWNSHIP 35 S., RANGE 1W., W.M.



<p>Center of Reservoir - 1420 feet North and 1920 feet West from the SE corner Section 3</p>	<p>Scale 1" = 1320'</p>	<p>NORTH</p>
<p> MULTI-PURPOSE RESERVOIR NAME: PDQ Reservoir SOURCE - Surface seepage &amp; Runoff including runoff in EPID ditch Capacity - 9 Acre-Feet</p>	<p>Freel &amp; Associates, LLC P.O. Box 587 Shady Cove, OR 97539</p>	
<p>This map is not intended to provide legal dimensions or locations of property ownership lines</p>	<p>Base map - Jackson County GIS Tax Lots with FPS map, site plan map overlays on 2005 FSA aerial photo for assumed best fit</p>	<p><b>JORDAN ENGINEERING</b> 460 JORDAN LANE ROSEBURG, OR 97471 (541) 673-1931 rev. 4/14/2014 n.e.d.</p>

R-0787