

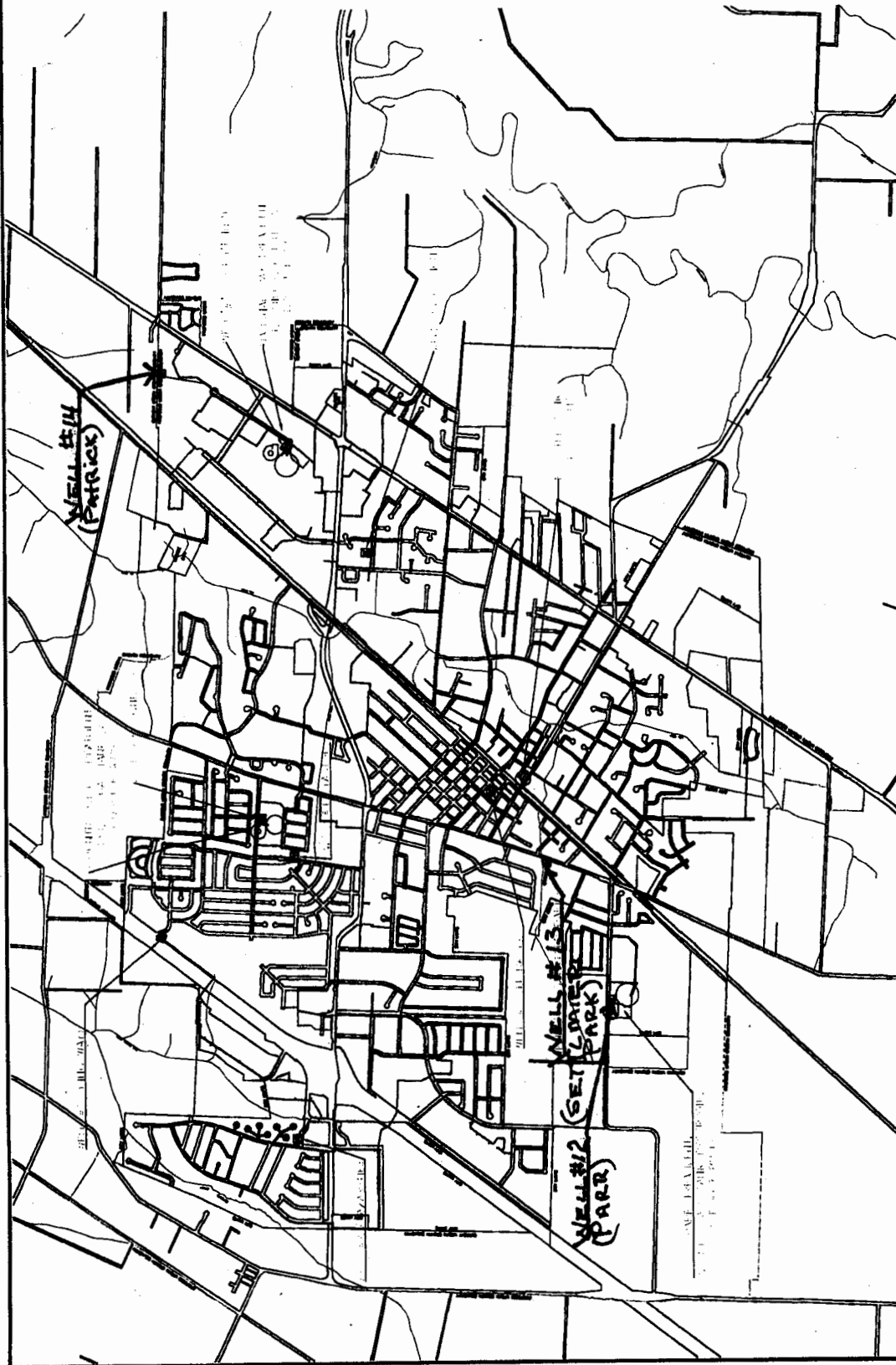
RECEIVED BY OWRD

JUN 04 2014

JUN 13 2014

SALEM, OR

SALEM, OR



WATER MAP



**DISCLAIMER**  
THIS MAP IS A GRAPHIC REPRESENTATION OF THE MOST CURRENT INFORMATION AVAILABLE. IT DOES NOT CONSTITUTE A GUARANTEE OF ACCURACY.

SCALE: 1:100 DATE: April 24, 2014

WATER LEGEND

- RESERVOIR (TANK)
- CITY LIMITS
- CURRENT UIC
- PROPOSED UIC
- PUMP STATION
- WELL



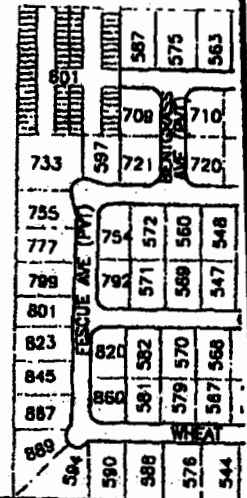
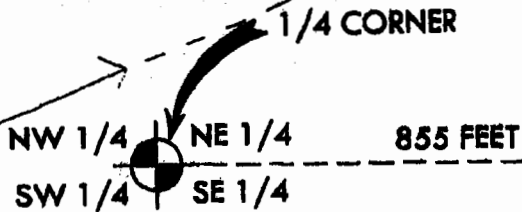
REMARKS:  
**WELLS 12, 13 & 14**

# T5S R2W WM

15198

RECEIVED BY OWRD  
 JUN 04 2014  
 SALEM, OR

RECEIVED BY OWRD  
 JUN 13 2014  
 SALEM, OR



PARR RD

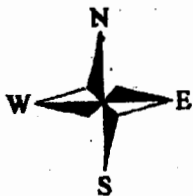
9008

828

450

POINT BEING: 855 FEET EAST  
 & 315 FEET SOUTH FROM  
 NW CORNER OF THE SE  
 QUARTER OF SECTION 13

828



PROJECT TITLE: APPLICATION FOR LIMITED WATER USE LICENSE

DRAWING NAME: WELL #12

PROJ. NO:	DESIGNED:
DWG. NO: 1.0	DRAWN BY: GK
DATE: 4/17/2008	REVIEWED: RR
SCALE: 1:300	APPROVED: RR

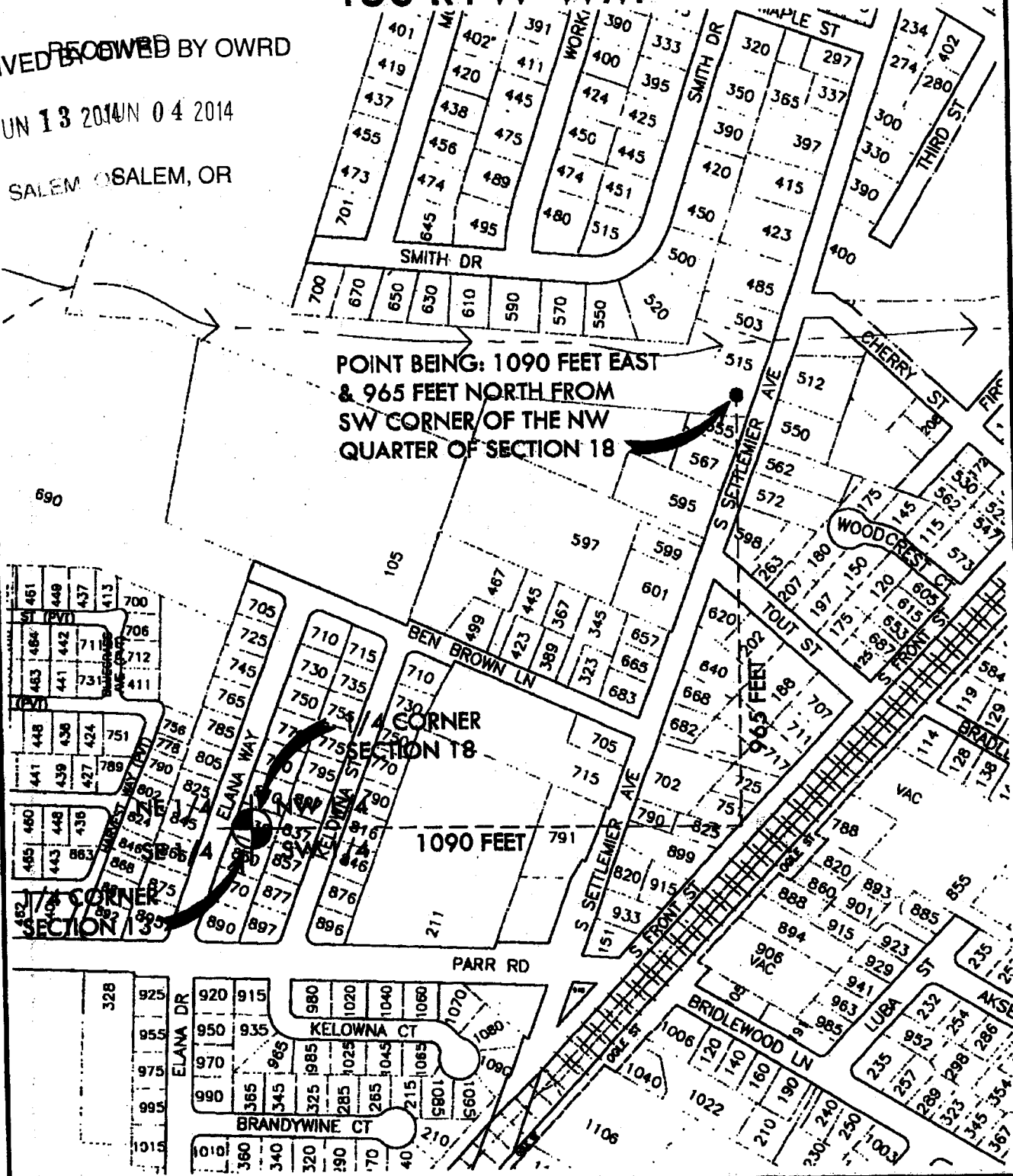
LL-1532

# T5S R1W WM

RECEIVED BY OWRD

JUN 13 2014 04 2014

SALEM, OR



**WOODBURN**  
Incorporated 1889  
PUBLIC WORKS DEPARTMENT  
ENGINEERING DIVISION

PROJECT TITLE: APPLICATION FOR LIMITED WATER USE LICENSE	
DRAWING NAME: WELL #13	
PROJ. NO:	DESIGNED:
DWG. NO: 1.0	DRAWN BY: GK
DATE: 4/17/2008	REVIEWED: RR
SCALE: 1:300	APPROVED: RR

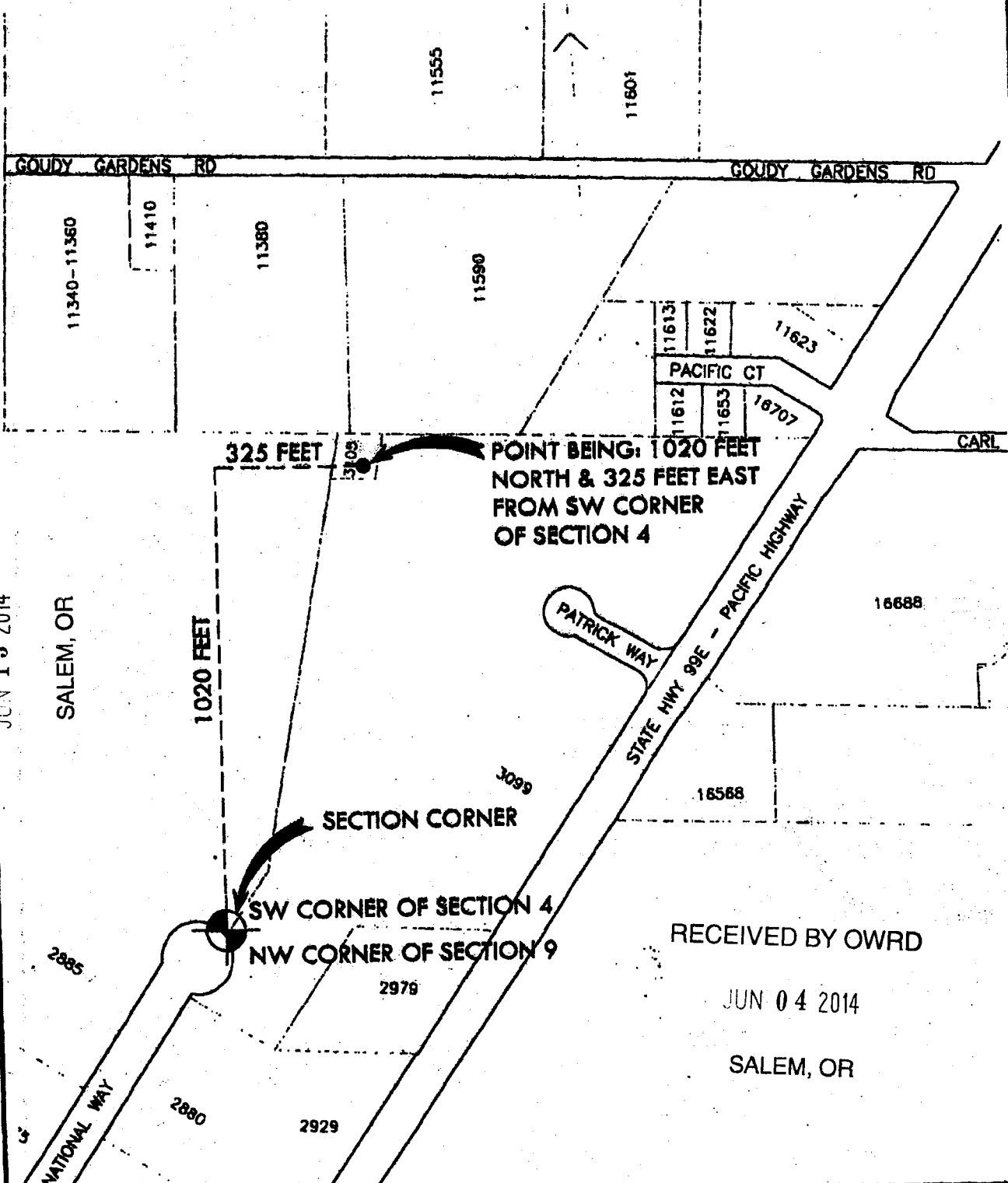
LL-1522

T5S R1W WM

RECEIVED BY OWRD

JUN 13 2014

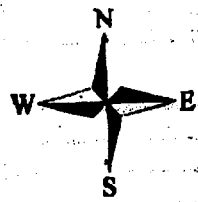
SALEM, OR



RECEIVED BY OWRD

JUN 04 2014

SALEM, OR



PROJECT TITLE: APPLICATION FOR LIMITED WATER USE LICENSE	
DRAWING NAME: WELL #14	
PROJ. NO:	DESIGNED:
DWG. NO: 1.0	DRAWN BY: GK
DATE: 4/17/2008	REVIEWED: RR
SCALE: 1:300	APPROVED: RR

LL4532