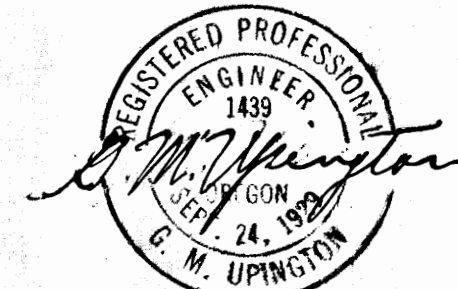
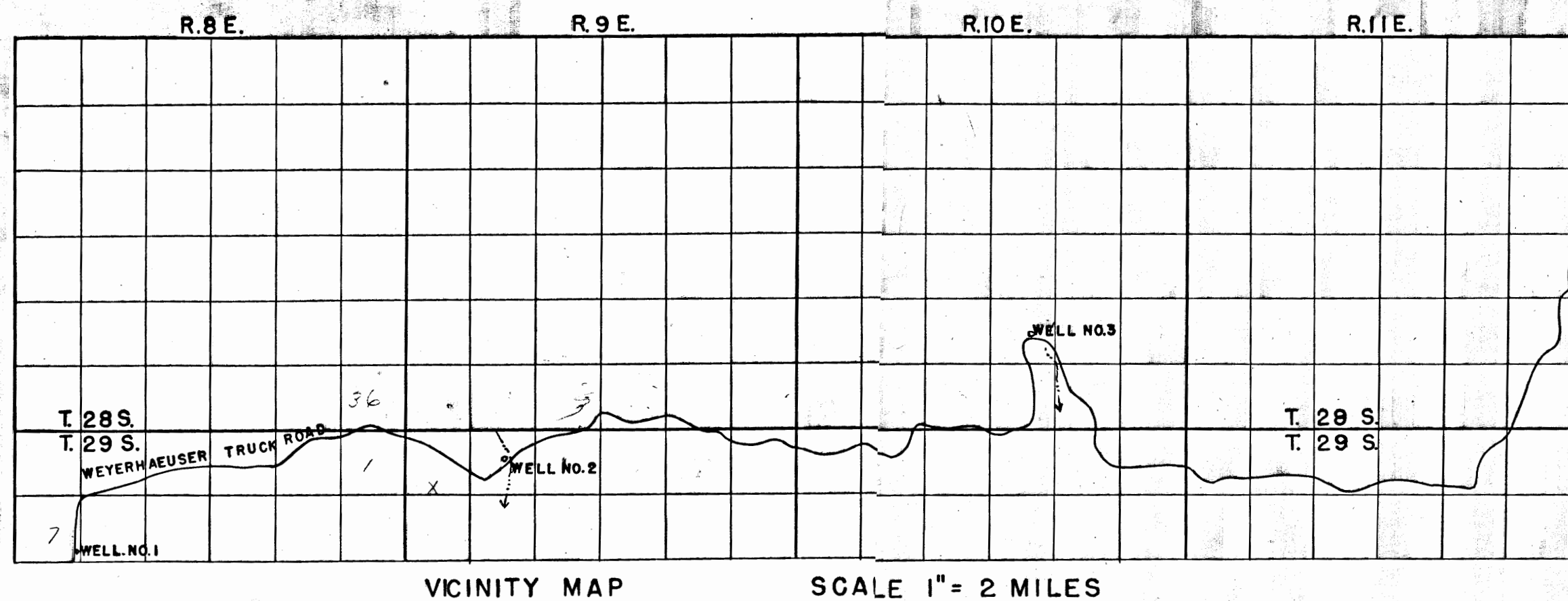


I, G.M. UPINGTON OF WEYERHAEUSER TIMBER COMPANY DO HEREBY CERTIFY THAT THIS MAP WAS MADE FROM NOTES TAKEN DURING AN ACTUAL SURVEY MADE UNDER MY IMMEDIATE SUPERVISION ON MAY 20, 1957; THAT THE MONUMENTS SHOWN ON THIS MAP CONSISTING OF 3/4" O.D. X 42" CUPRO-NICKEL PIPES ARE, WELL No. 1, S 1° 23' W 446' FROM THE NORTHEAST CORNER SECTION 7, TOWNSHIP 29 SOUTH, RANGE 8 EAST, WILLAMETTE MERIDIAN, WELL No. 2, S 87° 20' E 2872' FROM THE WEST 1/4 CORNER SECTION 5, TOWNSHIP 29 SOUTH, RANGE 9 EAST, WILLAMETTE MERIDIAN, WELL No. 3, N 50° 30' W 2471' FROM THE SOUTHEAST CORNER OF SECTION 27, TOWNSHIP 28 SOUTH, RANGE 10 EAST, WILLAMETTE MERIDIAN.



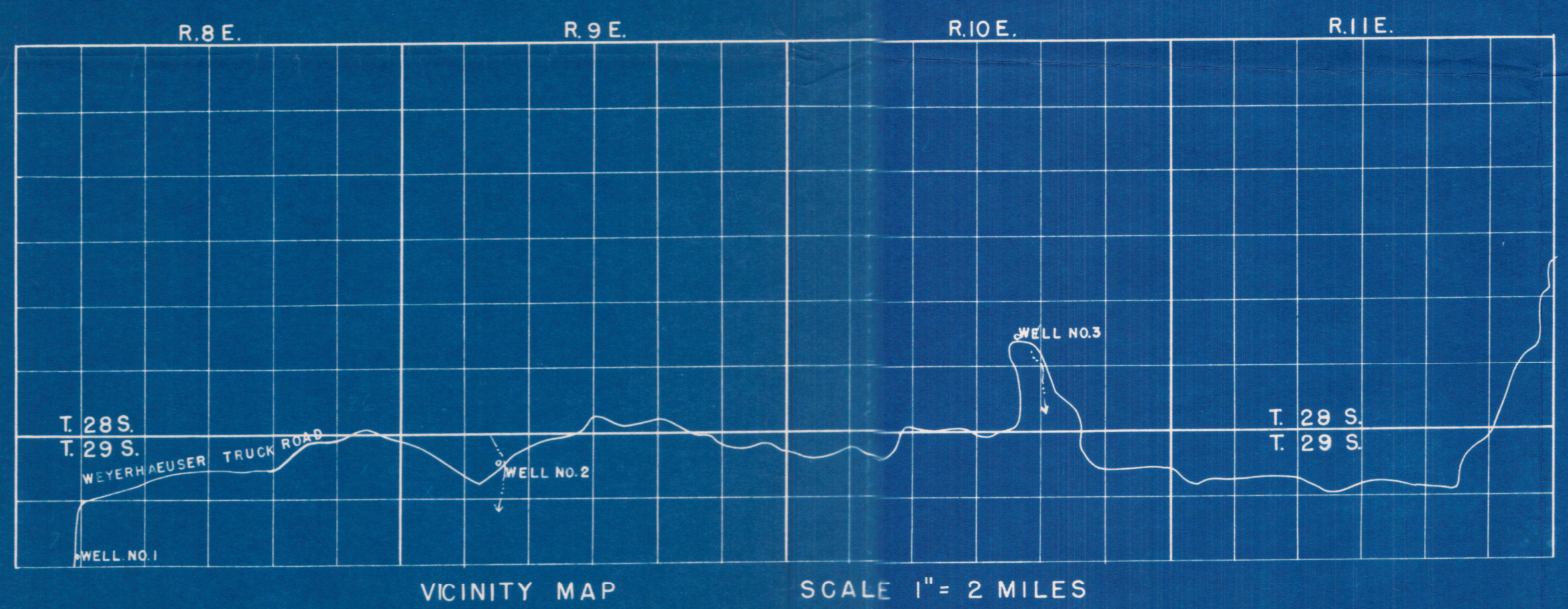
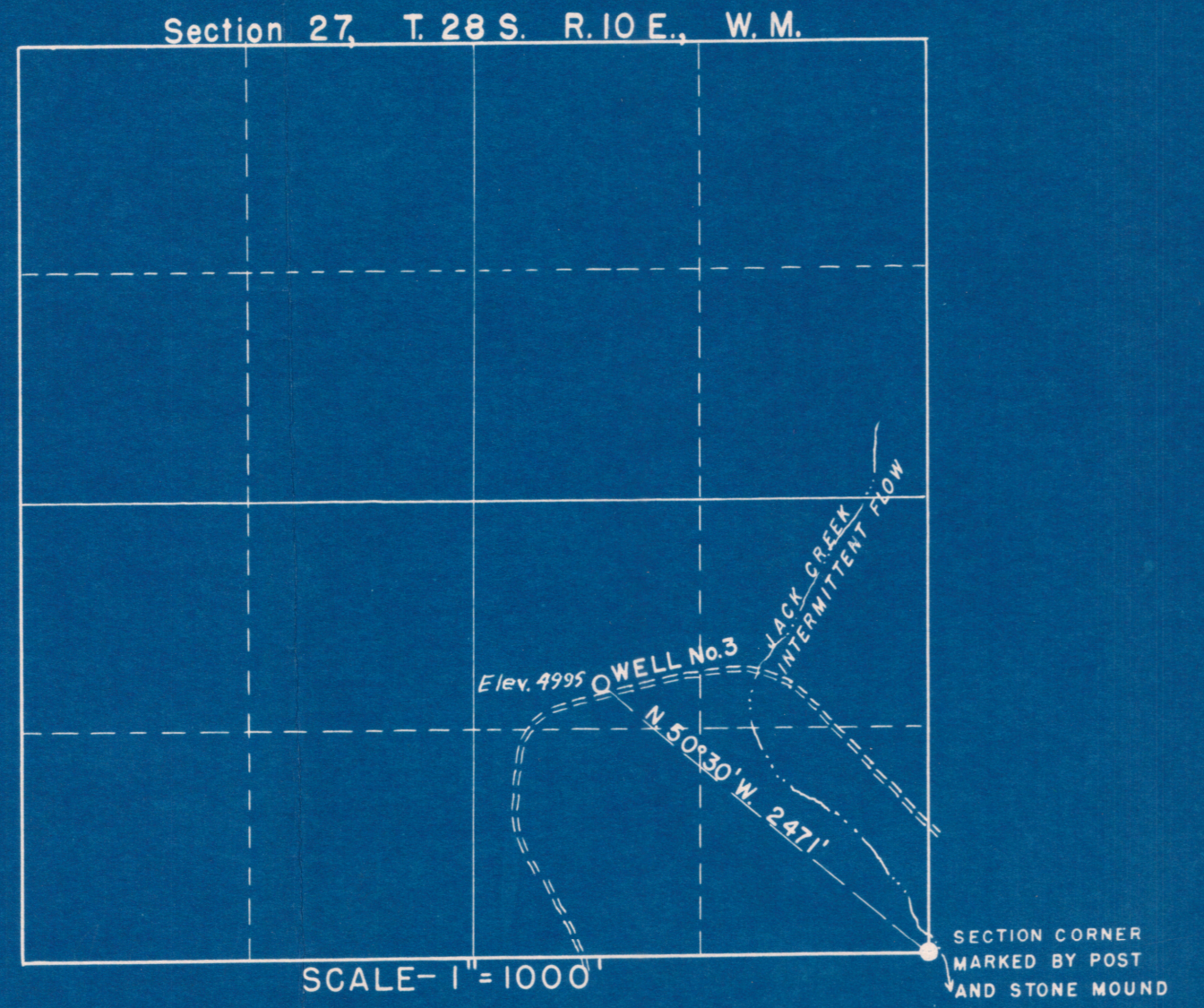
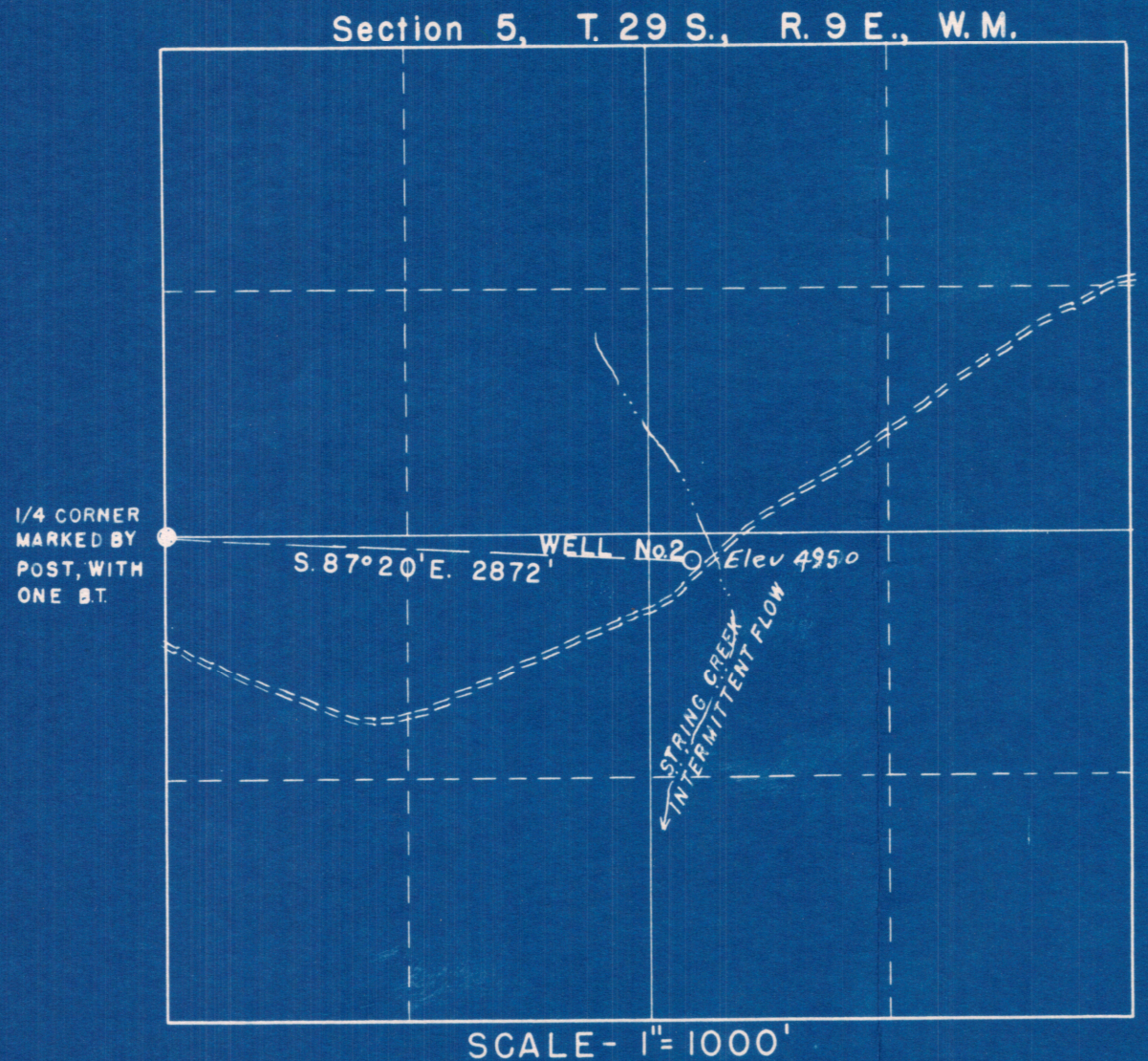
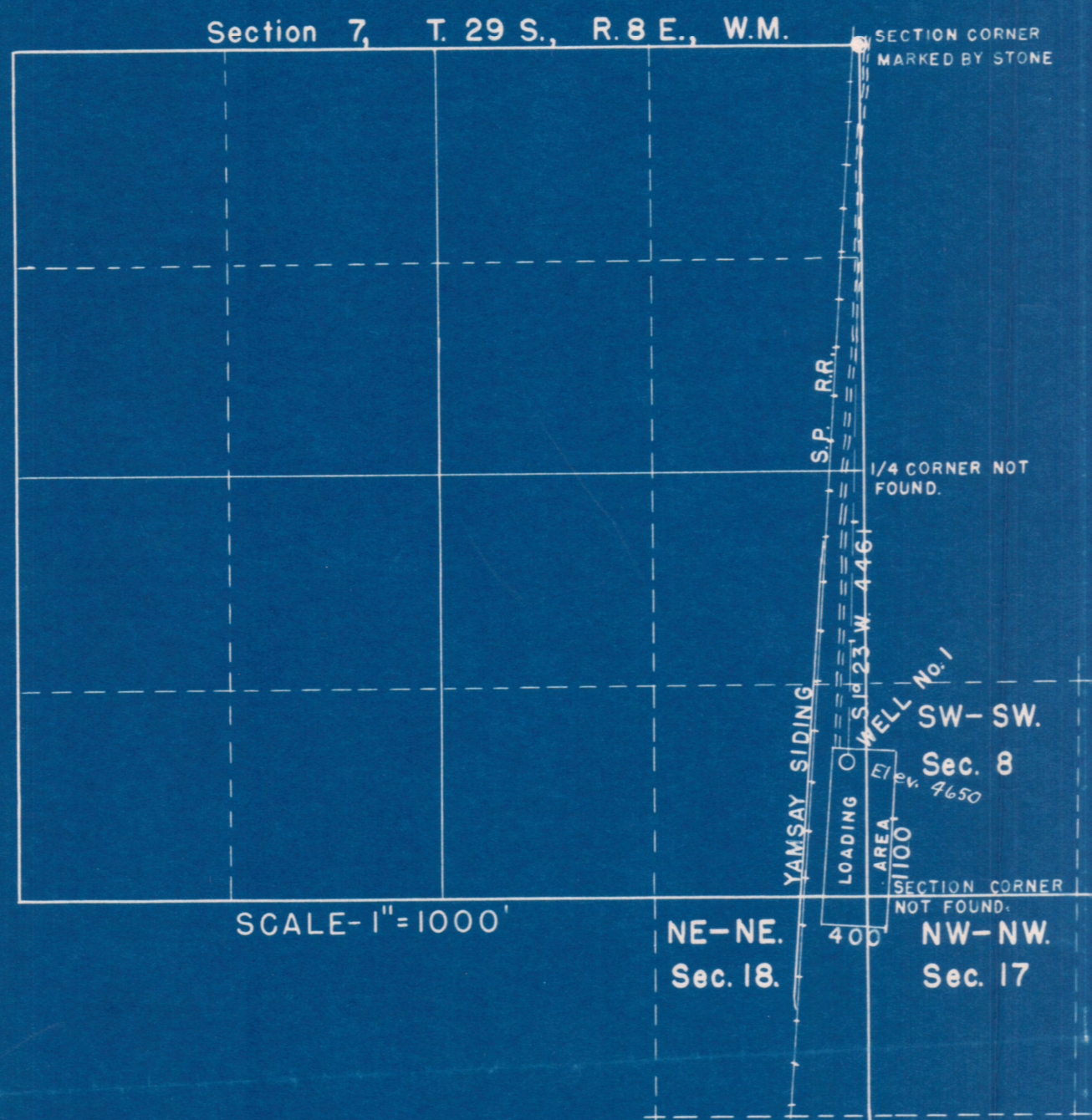
Application No. G-697
Permit No. G-615

BEAR FLAT TRUCK ROAD
WELL LOCATIONS

WEYERHAEUSER TIMBER COMPANY
KLAMATH FALLS BRANCH

SCALE- AS SHOWN
DATE- JUNE 5, 1957
DEL. - *CH*
CHECKED BY-
TRACED- *CH*
DRAWING NO- K 166

RECEIVED
JUN 21 1957
STATE ENGINEER
SAL. CR. 101



I, G.M. UPINGTON OF WEYERHAEUSER TIMBER COMPANY DO HEREBY CERTIFY THAT THIS MAP WAS MADE FROM NOTES TAKEN DURING AN ACTUAL SURVEY MADE UNDER MY IMMEDIATE SUPERVISION ON MAY 20, 1957; THAT THE MONUMENTS SHOWN ON THIS MAP CONSISTING OF 3/4" O.D. X 42" CUPRO-NICKEL PIPES ARE, WELL No. 1, S 1° 23' W 446' FROM THE NORTHEAST CORNER SECTION 7, TOWNSHIP 29 SOUTH, RANGE 8 EAST, WILLAMETTE MERIDIAN, WELL No. 2, S 87° 20' E 2872' FROM THE WEST 1/4 CORNER SECTION 5, TOWNSHIP 29 SOUTH, RANGE 9 EAST, WILLAMETTE MERIDIAN, WELL No. 3, N 50° 30' W 2471' FROM THE SOUTHEAST CORNER OF SECTION 27, TOWNSHIP 28 SOUTH, RANGE 10 EAST, WILLAMETTE MERIDIAN.

REGISTERED PROFESSIONAL ENGINEER
 G. M. Upington
 1957

Application No. G-698
 Permit No. G-615

BEAR FLAT TRUCK ROAD WELL LOCATIONS		
WEYERHAEUSER TIMBER COMPANY KLAMATH FALLS BRANCH		
SCALE- AS SHOWN	DATE- JUNE 5, 1957	
DEL. - <i>CHH</i>	CHECKED BY-	
TRACED- <i>CHH</i>	DRAWING NO- K 166	