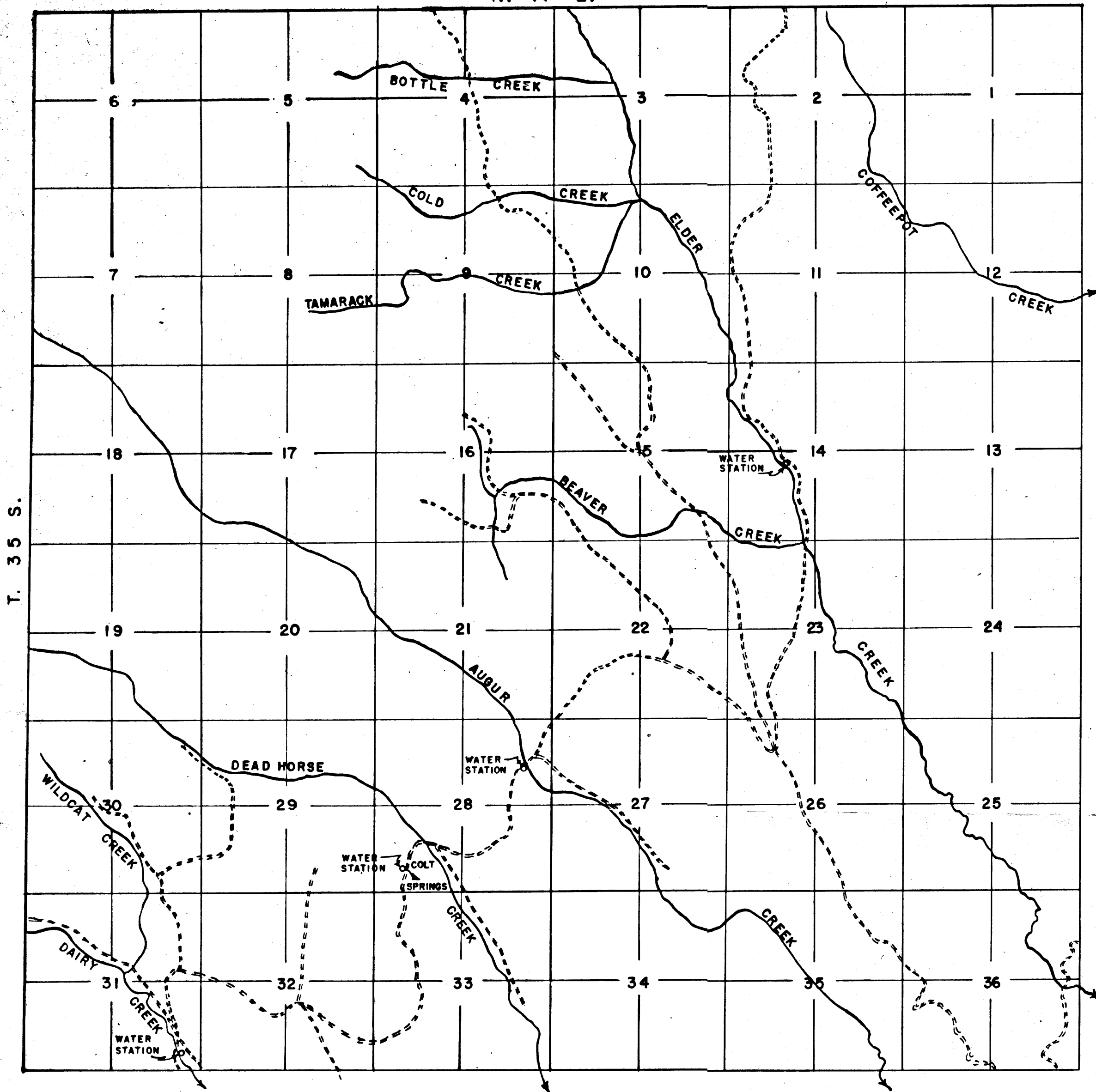
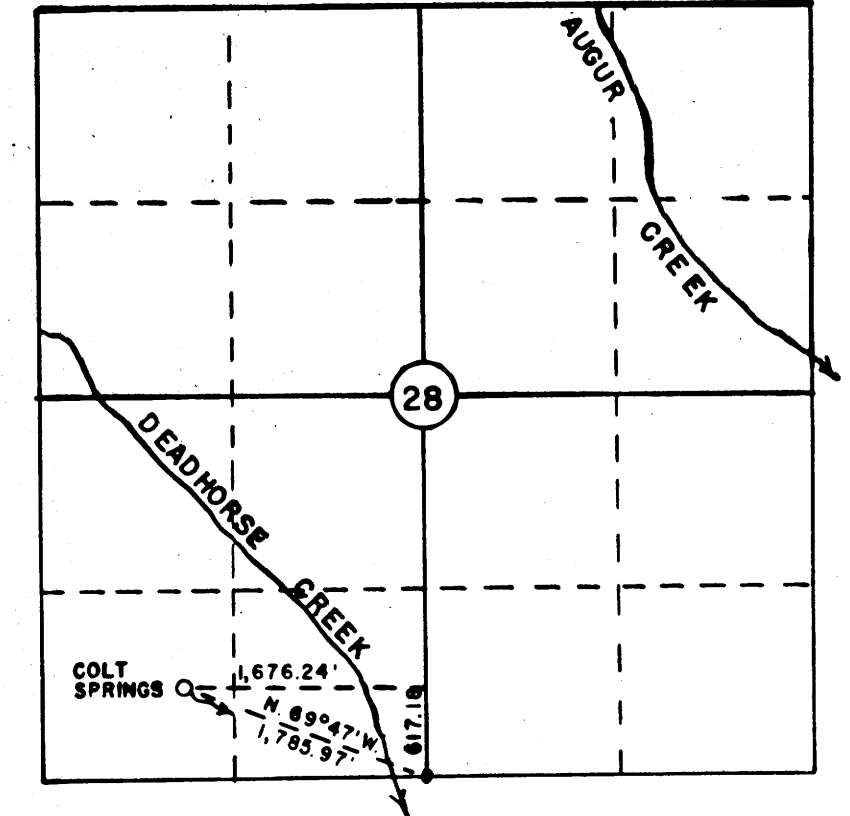
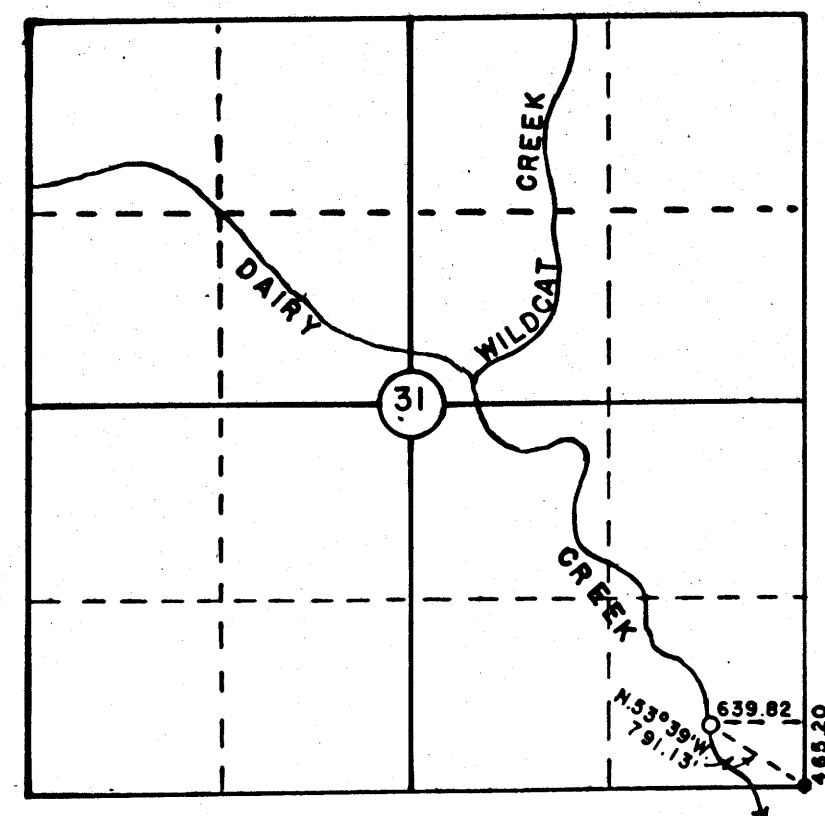


R. 17 E.



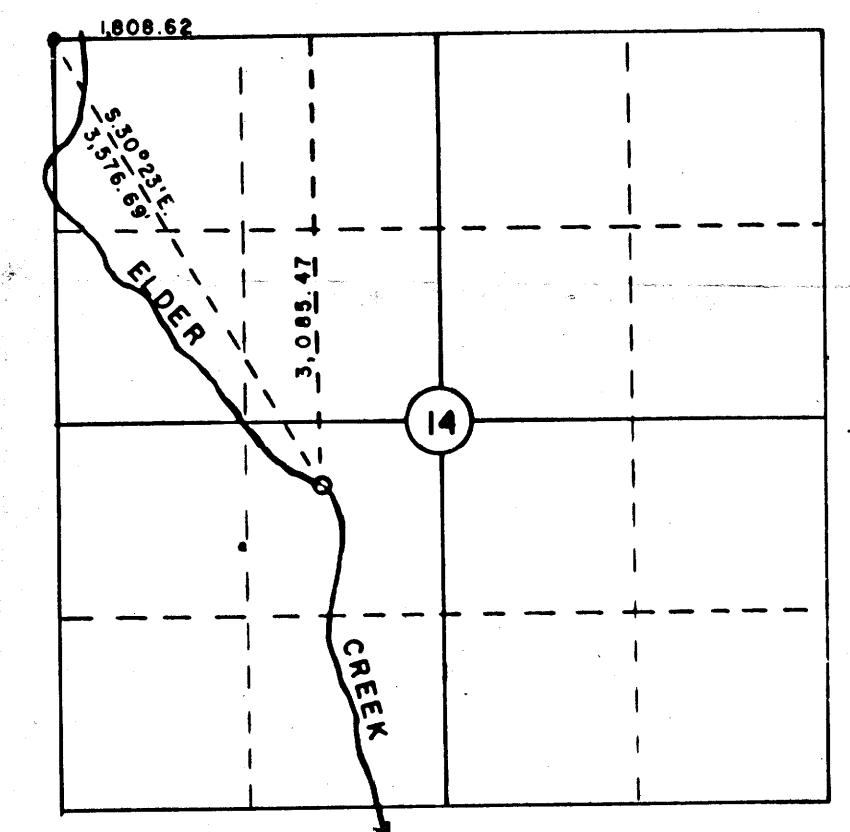
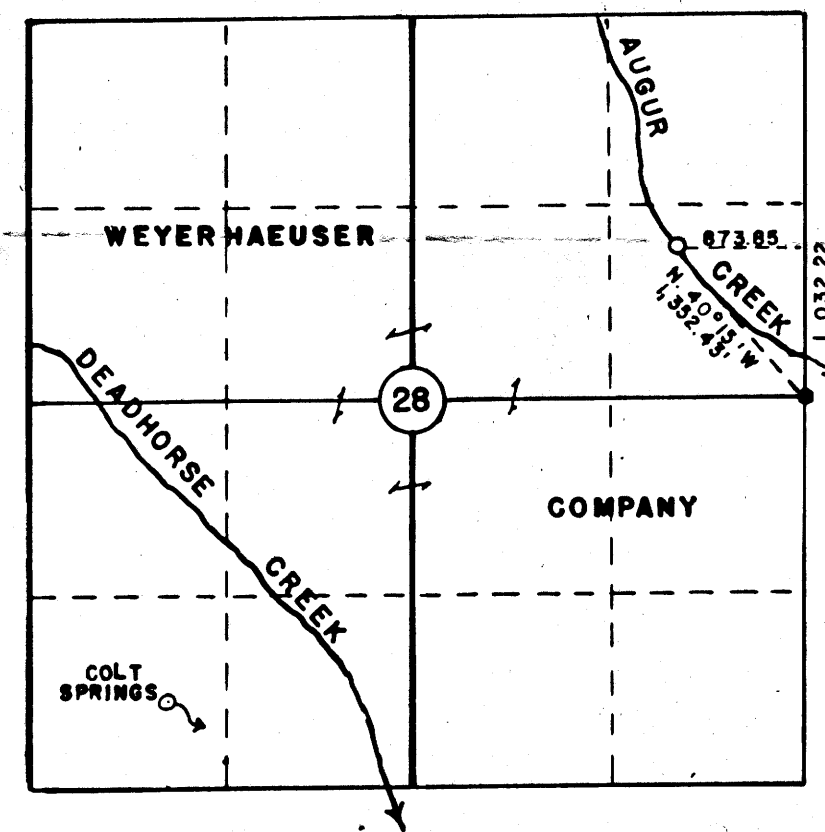
VICINITY MAP SCALE: 1" = 2 MILES

I, G.M. UPINGTON OF WEYERHAEUSER COMPANY DO HEREBY CERTIFY THAT THIS MAP WAS MADE FROM NOTES TAKEN DURING AN ACTUAL SURVEY MADE UNDER MY IMMEDIATE SUPERVISION ON OCT. 7-11, 1960; THAT THE MONUMENTS SHOWN ON THIS MAP CONSISTING OF 1" IRON PIPES 36" LONG ARE 3,576.69 FT. S. 30° 23' E. OF NW SECTION CORNER SECTION 14, T. 35 S., R. 17 E.; 1,352.43 FT. N. 40° 15' W. OF E. 1/4 CORNER SECTION 28, T. 35 S., R. 17 E.; 1,785.97 FT. N. 69° 47' W. OF S. 1/4 CORNER SECTION 28, T. 35 S., R. 17 E.; 791.13 FT. N. 53° 59' W. OF SE SECTION CORNER SECTION 31, T. 35 S., R. 17 E., W. M..



SECTIONS 14, 28, & 31, TOWNSHIP 35 SOUTH, RANGE 17 EAST, WILLAMETTE MERIDIAN

SCALE: 4" = 1 MILE



No. 34788
No. 27306

REP. OFFICER
G.M. Upington

WATER RIGHTS APPLICATION SECS. 14, 28, & 31, T. 35 S., R. 17 E., W.M.	
WEYERHAEUSER COMPANY LUMBER & PLYWOOD DIVISION KLAMATH FALLS BRANCH	
SCALE - AS SHOWN	DATE - FEB. 24, 1961
DEL. - C.C.C.	CHECKED BY - <i>CNH</i>
TRACED - C.C.C.	DRAWING No - K203-2

C-41-12