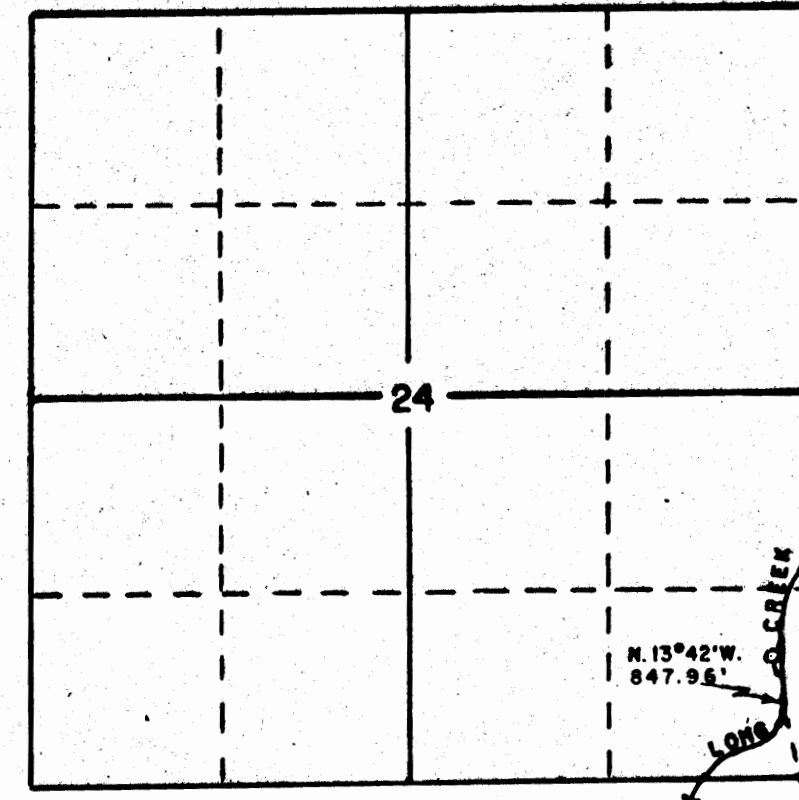
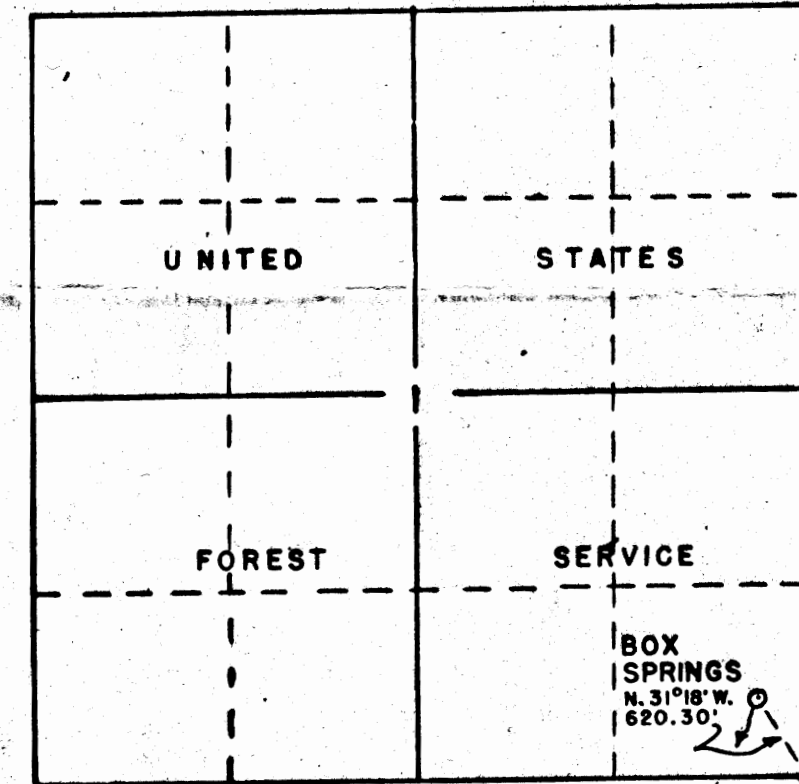


VICINITY MAP SCALE: 2" = 1 MILE

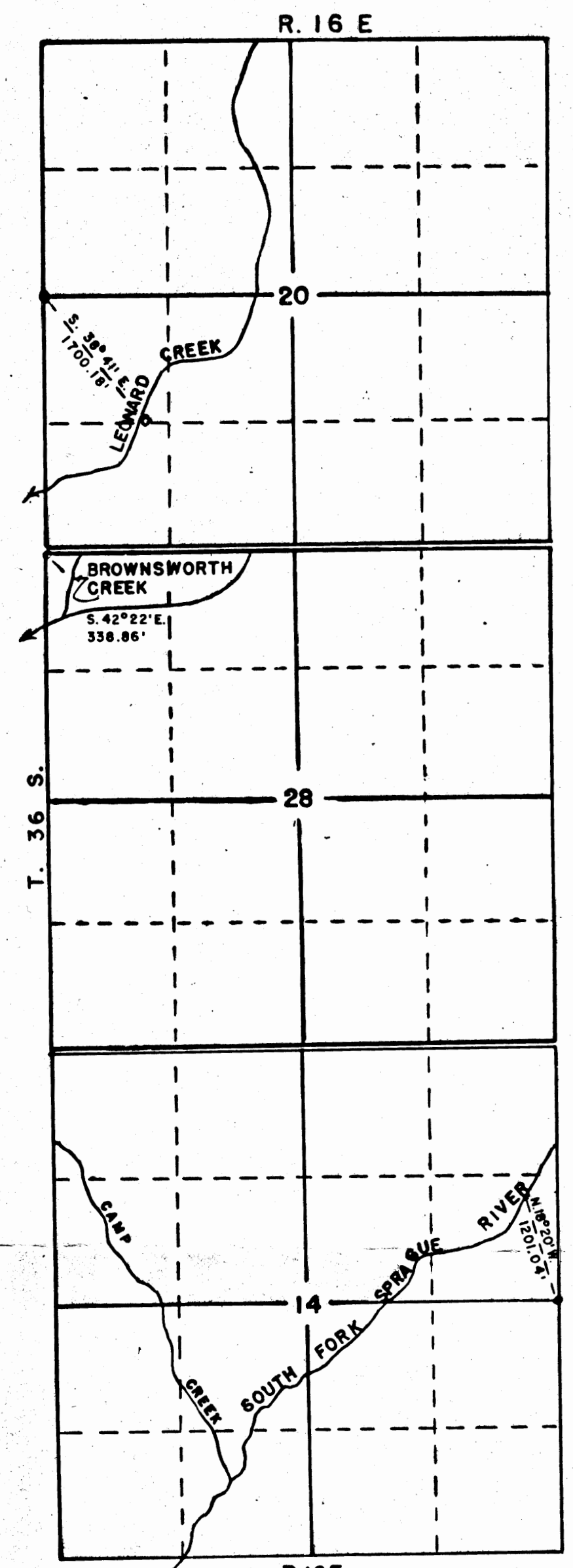


T. 36 S. R. 15 E. W.M.

SCALE: 4" = 1 MILE



T. 36 S. R. 16 E.



R. 16 E.

I, G.M. UPINGTON OF WEYERHAEUSER COMPANY DO HEREBY CERTIFY THAT THIS MAP WAS MADE FROM NOTES TAKEN DURING AN ACTUAL SURVEY MADE UNDER MY IMMEDIATE SUPERVISION ON OCT. 10-11, 1960; THAT THE MONUMENTS SHOWN ON THIS MAP CONSISTING OF 1" IRON PIPES 36" LONG ARE 847.96 FT. N. 13°42' W. OF SE SECTION CORNER SECTION 24, T. 36 S., R. 15 E., W.M.; 1700.18 FT. S. 38°41' E. OF W. 1/4 CORNER SECTION 20, T. 36 S., R. 16 E., W.M.; 338.86 FT. S. 42°22' E. OF NW. SECTION CORNER SECTION 28, T. 36 S., R. 16 E., W.M.; 1,201.04 FT. N. 18°20' W. OF E. 1/4 CORNER SECTION 14, T. 36 S., R. 16 E., W.M.; 620.30 FT. N. 31°18' W. OF SE SECTION CORNER SECTION 1, T. 36 S., R. 16 E., W.M.

RECEIVED
 APR 11 1961
 STATE ENGINEER
 BUREAU OF WATER RIGHTS
 Application No. 34786
 Permit No. 27304

G.M. Upington
 G.M. UPINGTON
 SURVEYOR

WATER RIGHTS APPLICATION
 SECS. 1, 14, 20, 28, & 24, T. 36 S., R. 15 & 16 E., W.M.
WEYERHAEUSER COMPANY
 LUMBER & PLYWOOD DIVISION
 KLAMATH FALLS BRANCH
 SCALE - AS SHOWN DATE - FEB. 28, 1961
 DEL. - C.L.C. CHECKED BY - CM
 TRACED - C.L.C. DRAWING No - K203-3

C-44-17