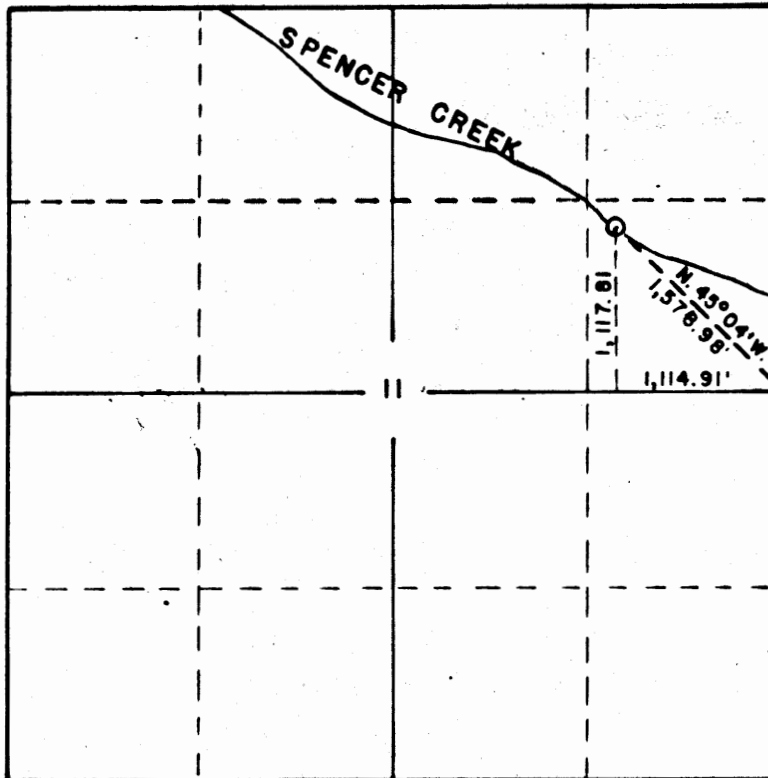
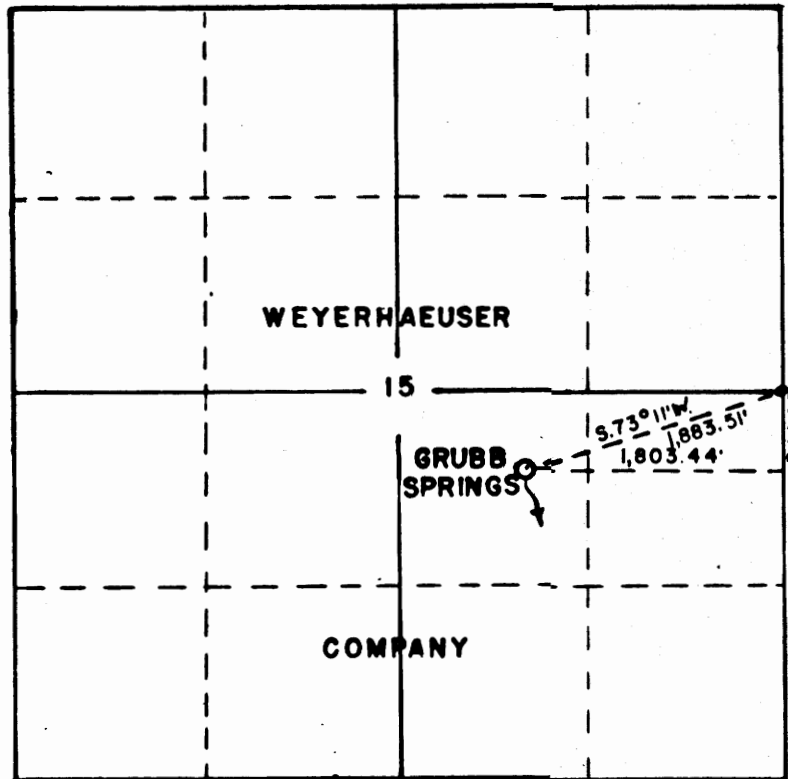
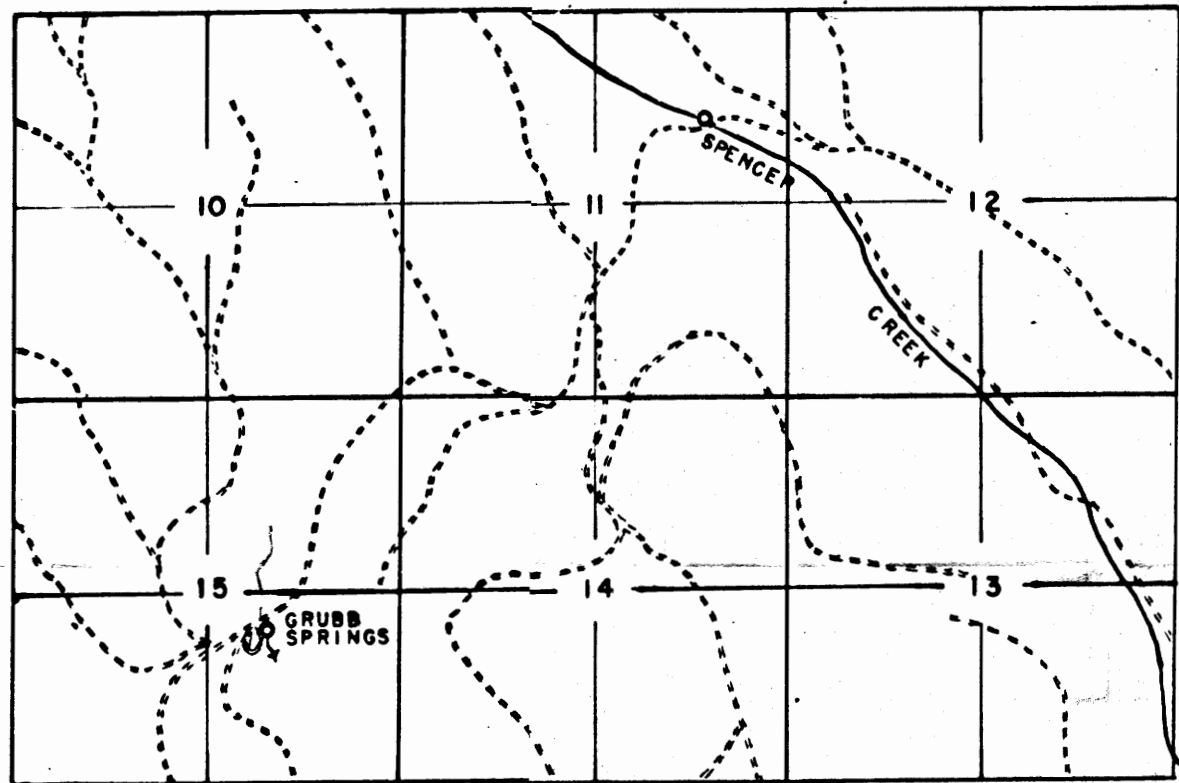


T. 39 S. R. 6 E. W.M.



SCALE - 4" = 1 MILE



VICINITY MAP
SCALE - 2" = 1 MILE

Application No. **34787**
 File No. **27305**

I, G. M. Upington of Weyerhaeuser Company do hereby certify that this map was made from notes taken during an actual survey made under my immediate supervision on Oct. 2, 1960; that the monuments shown on this map consisting of 1"X36" iron pipes are 1,578.98 ft. N. 45° 04' W. of E. 1/4 corner Section 11, T. 39 S., R. 6 E., W. M.; 1,883.51 ft. S. 73° 11' E. of E. 1/4 corner Section 15, T. 39 S., R. 6 E., W. M..

G. M. Upington

WATER RIGHTS APPLICATION SEC. 11 & 15, T. 39 S., R. 6 E., W. M.	
WEYERHAEUSER COMPANY LUMBER & PLYWOOD DIVISION KLAMATH FALLS BRANCH	
SCALE: AS SHOWN	DATE: FEB. 22, 1961
DEL: C. L. C.	CHECKED BY: <i>EAJ</i>
TRACED: C. L. C.	DRAWING NO.: K 203-1

C-41-17