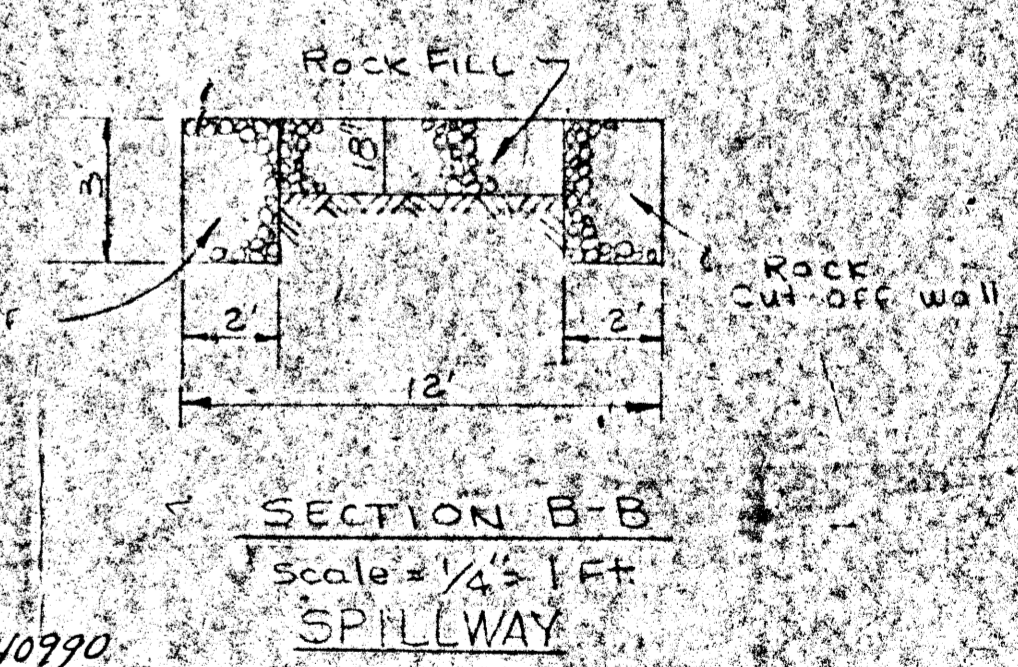
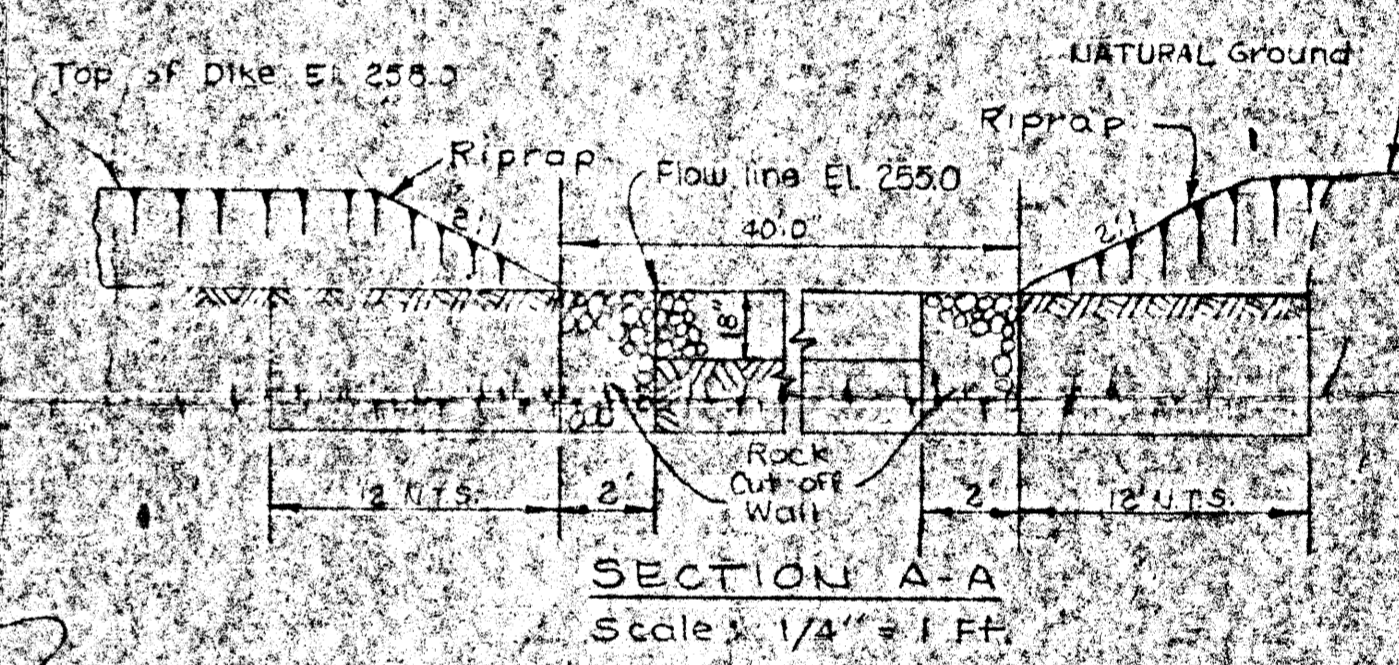
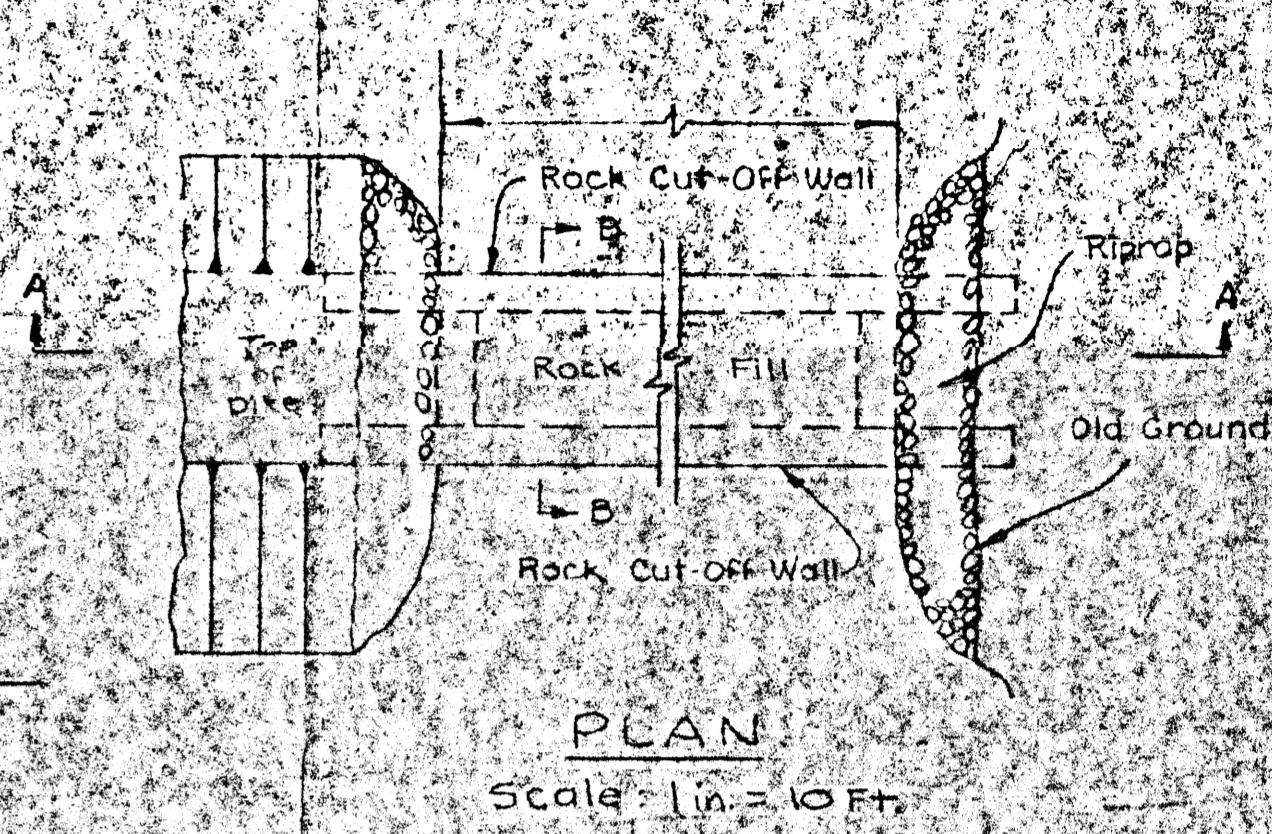
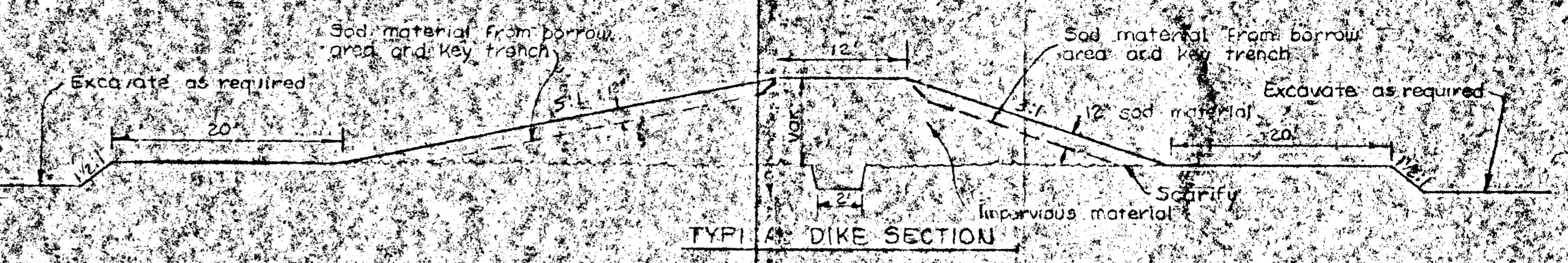
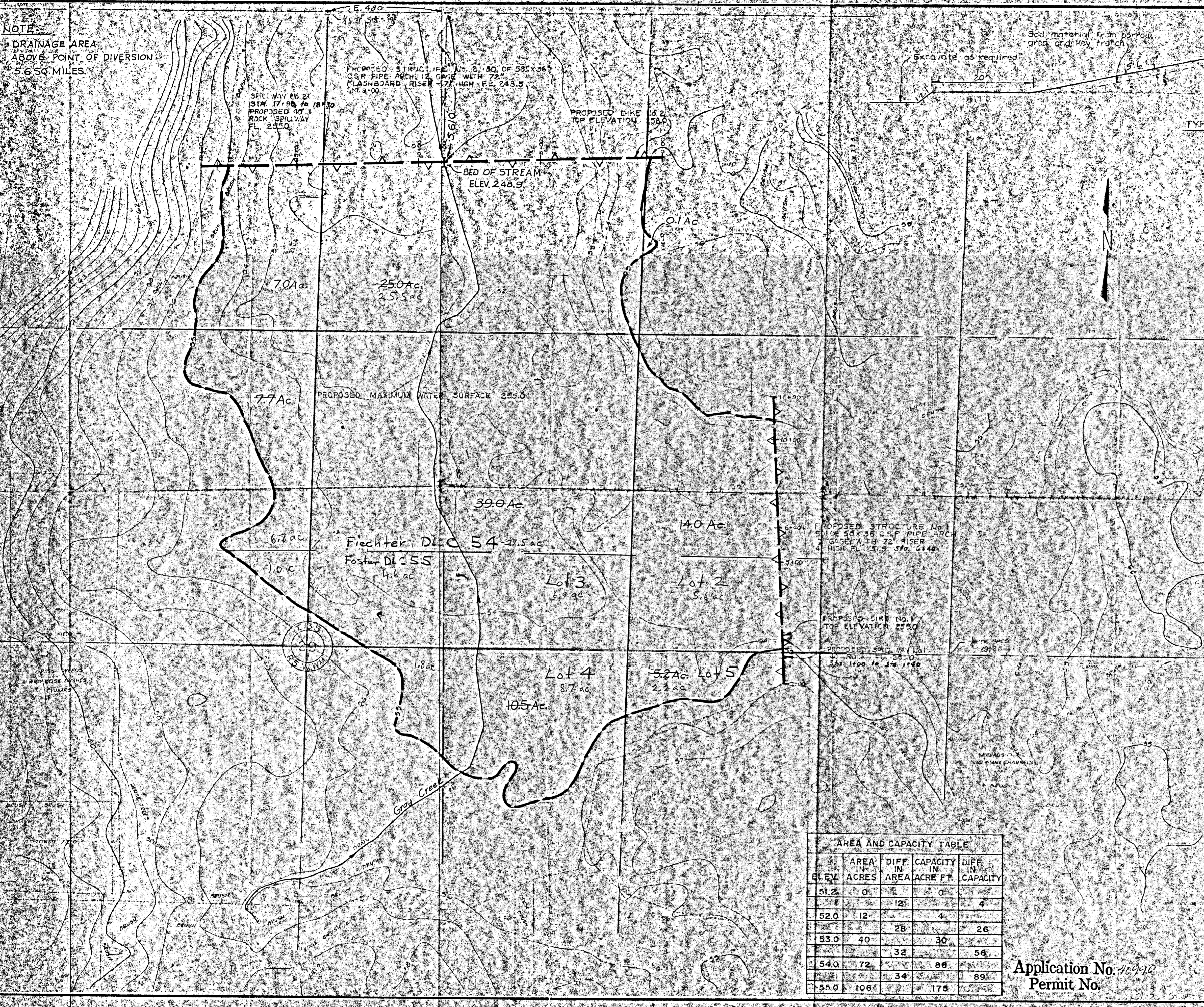


NOTE:
DRAINAGE AREA
ABOVE POINT OF DIVERSION
5.6 SQ. MILES.



Application No. 40990
Permit No. 30428

SCALE IN FEET

AREA AND CAPACITY TABLE

ELEV.	AREA IN ACRES	DIFF. IN AREA	CAPACITY IN ACRE FT.	DIFF. IN CAPACITY
51.2	0		0	
		12	4	4
52.0	12		4	
		28	26	26
53.0	40		30	
		32	56	56
54.0	72		86	
		34	89	89
55.0	106		175	

Application No. 40990
Permit No.

REVISIONS		DATE	BY
UNITED STATES DEPARTMENT OF THE INTERIOR FISH AND WILDLIFE SERVICE BUREAU OF SPORT FISHERIES AND WILDLIFE BRANCH OF ENGINEERING			
SUBMITTED <i>Allen</i> REGIONAL ENGR.	WILLAMETTE NATIONAL WILDLIFE REFUGE MUDDY CREEK UNIT PROPOSED		
REVIEWED <i>Thomas</i>	DEVELOPMENT OF CABELL MARSH		
RECOMMENDED <i>Allen</i> REGIONAL DIRECTOR	BENTON COUNTY, OREGON		
W. D. APPROVAL	DATE	SURVEYED: H.F.W. DESIGNED: E.R.J. DRAWN: C.A.H. CHECKED: <i>SA</i>	DATE
	6-10-65	PORTLAND OREGON	DRWG. NO. IN ORE 6708 010