

SIFI Main Farm

Tax Lots from ORMAP



Copyright 2011 ORMAP All rights reserved Tue Jun 10 2014 03:27:04 PM

RECEIVED BY OWRD

JUN 30 2014

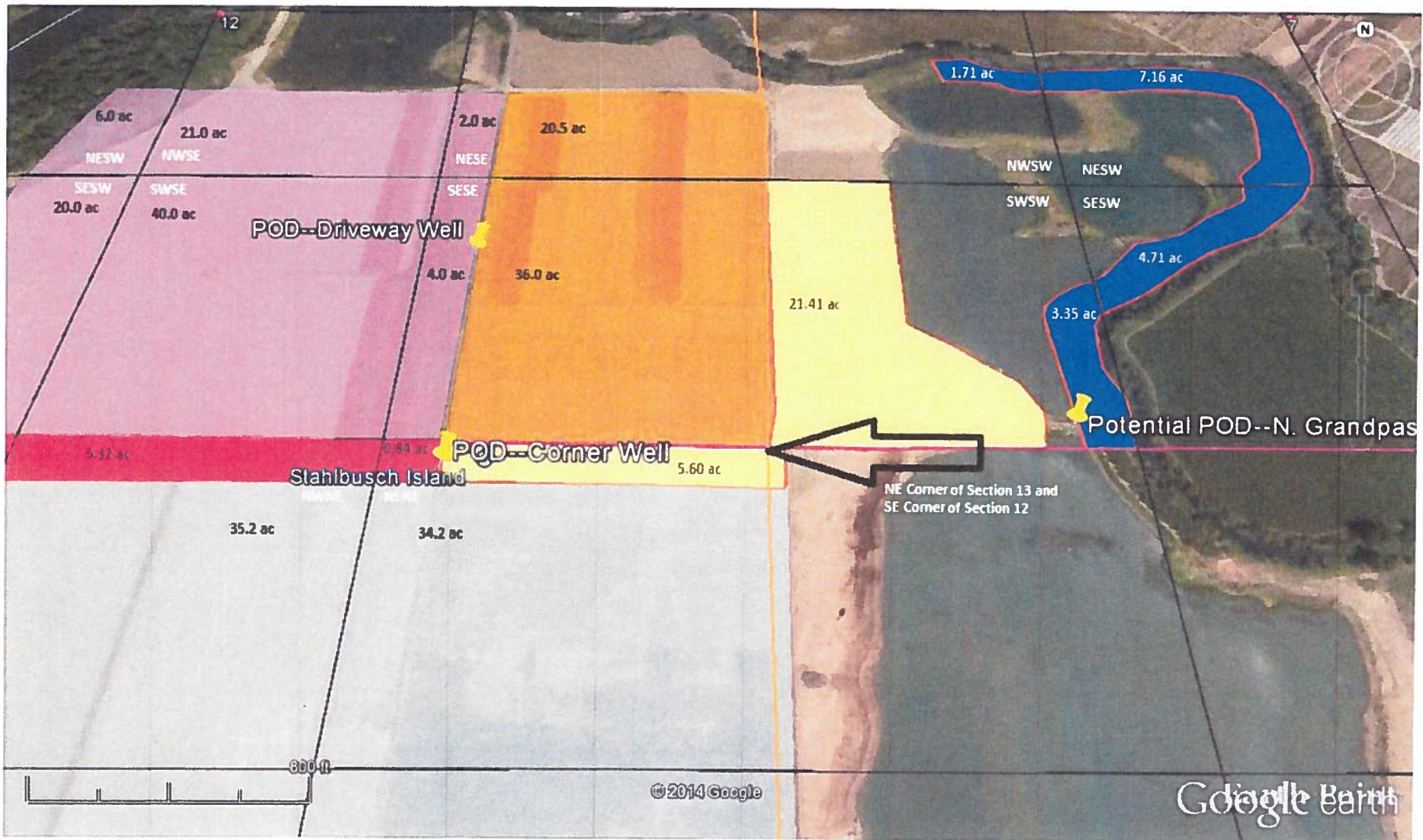
SALEM, OR

RECEIVED BY OWRD

JUL 31 2014

SALEM, OR

S 87999



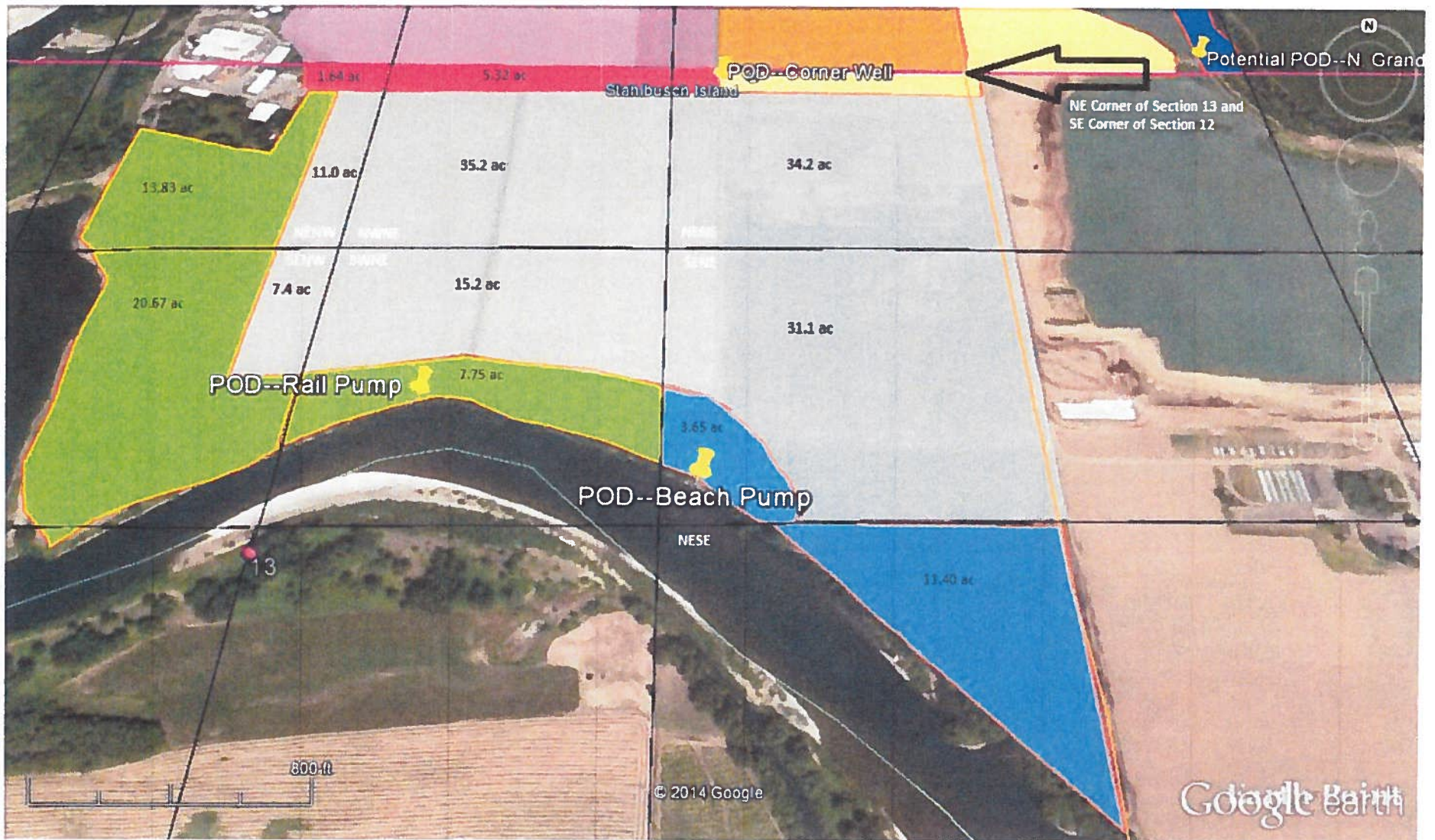
1" = 400'

RECEIVED

SEP 22 2014

WATER RESOURCES DEPT
SALEM, OREGON

- GREEN: Rail Pump: 2160 feet west and 1997 feet south from the NE corner of Section 13
- LIGHT BLUE: Beach Pump: 1151 feet west and 2353 feet south from the NE corner of Section 13
- DARK BLUE: Proposed N. Grandpa's POD: 1100 feet east and 91 feet north from the SW corner of Section 7
- HOT PINK: Corner Well: 1131 feet west and 168 feet south from the NE corner of Section 13
- YELLOW: Driveway Well: 1167 feet west and 970 feet north from the SE corner of Section 12
- TRANSPARENT PINK: GR 2727 where we are requesting supplemental irrigation
- TRANSPARENT ORANGE: GR 2732 where we are requesting supplemental irrigation
- TRANSPARENT WHITE: CERT 46117 where we are requesting supplemental irrigation



1" = 400'

RECEIVED

SEP 22 2014

WATER RESOURCES DEPT
SALEM, OREGON

- GREEN: Rail Pump: 2160 feet west and 1997 feet south from the NE corner of Section 13
- LIGHT BLUE: Beach Pump: 1151 feet west and 2353 feet south from the NE corner of Section 13
- DARK BLUE: Proposed N. Grandpa's POD: 1100 feet east and 91 feet north from the SW corner of Section 7
- HOT PINK: Corner Well: 1131 feet west and 168 feet south from the NE corner of Section 13
- YELLOW: Driveway Well: 1167 feet west and 970 feet north from the SE corner of Section 12
- TRANSPARENT PINK: GR 2727 where we are requesting supplemental irrigation
- TRANSPARENT ORANGE: GR 2732 where we are requesting supplemental irrigation
- TRANSPARENT WHITE: CERT 46117 where we are requesting supplemental irrigation

201405

RECEIVED BY OWRD

JUN 30 2014

RECEIVED BY OWRD

JUL 31 2014







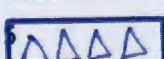
Google earth
Earth Point

Imagery Date: 7/9/2012 44°31'51.69" N 123°13'50.30" W elev: 217 ft eye alt: 6781 ft

6887 2999

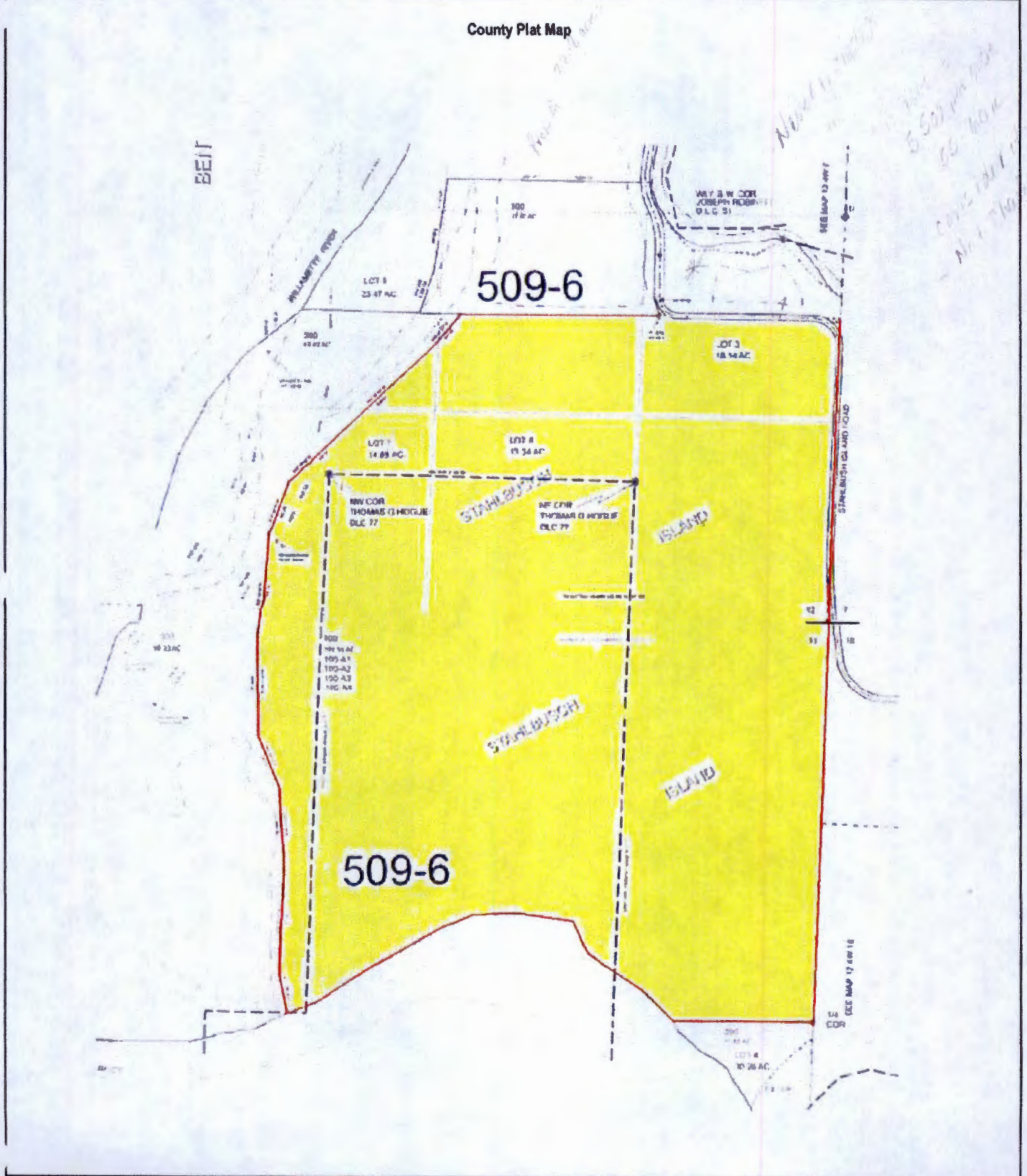


1" = 740'
Areas outlined in orange

-  Rail Pump: 2160 feet west and 1997 feet south from the NE corner of Section 13
-  Beach Pump: 1151 feet west and 2353 feet south from the NE corner of Section 13
-  Proposed N. Grandpa's POD: 1100 feet east and 91 feet north from the SW corner of Section 7
-  Corner Well: 1131 feet west and 168 feet south from the NE corner of Section 13
-  Driveway Well: 1167 feet west and 970 feet north from the SE corner of Section 12

RECEIVED BY OWRD
 JUL 31 2014
 SALEM, OR

County Plat Map



JUL 31 2014

SALEM, OR

S-07999