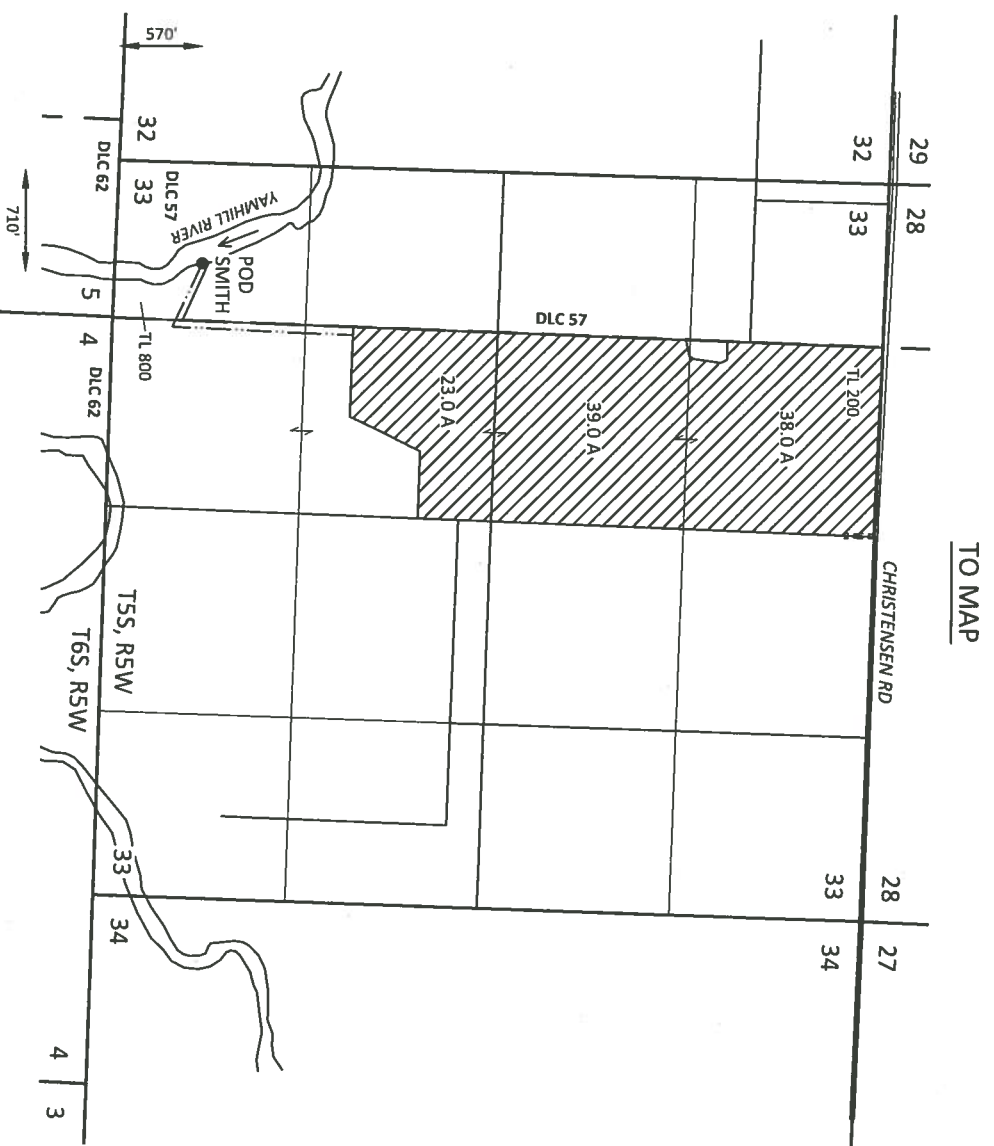
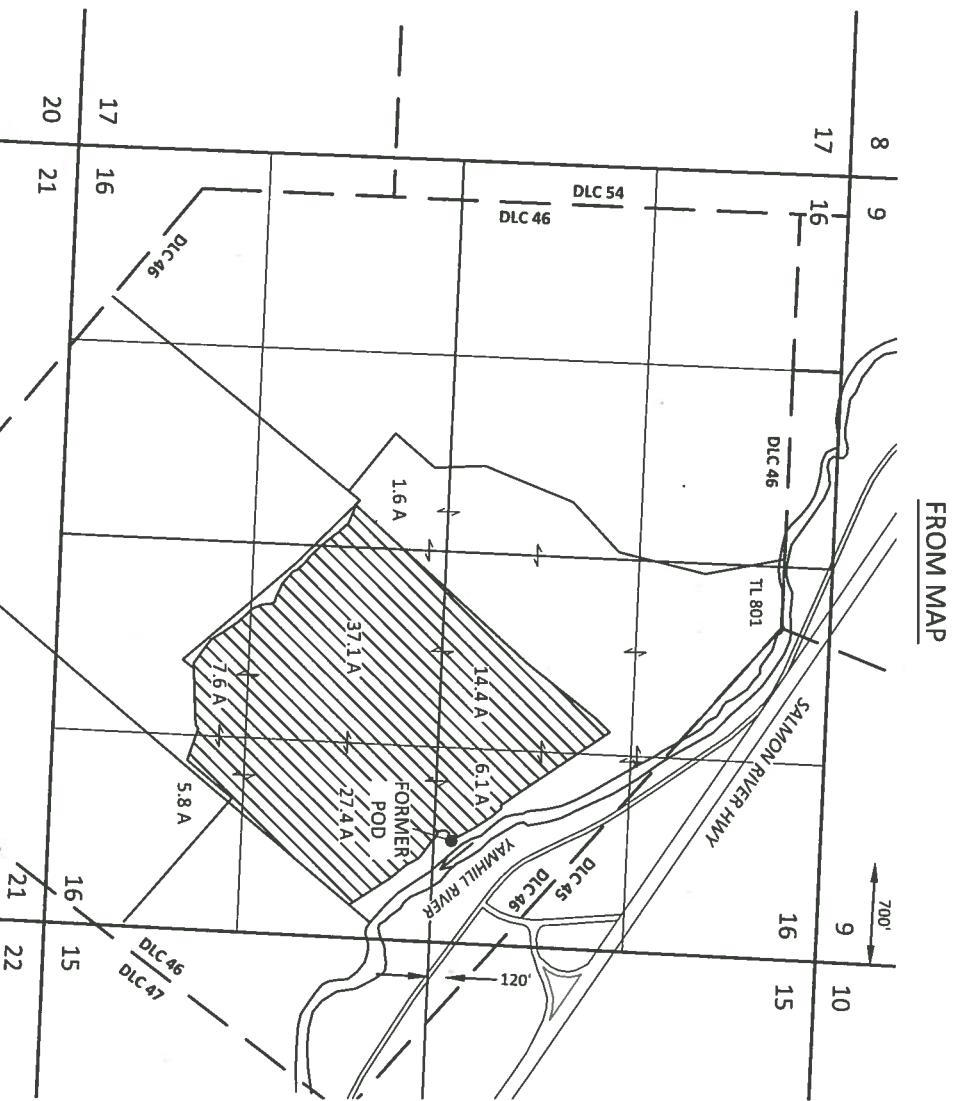
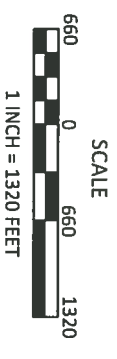
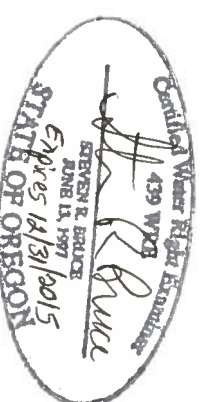


TRANSFER APPLICATION MAP
Certificate 62271
Section 16, T6S, R7W, W.M., Polk County
Section 33, T5S, R5W, W.M., Yamhill County
Zach Christensen



EXPLANATION

- FROM LANDS**
- CERTIFICATE 62271 (100.0 AC)
IRRIGATION - SOUTH YAMHILL RIVER
PRIORITY: 3/3/1978
- TO LANDS**
- CERTIFICATE 62271 (100.0 AC)
IRRIGATION - SOUTH YAMHILL RIVER
PRIORITY: 3/3/1978
 - POINT OF DIVERSION (POD)
 - PIPELINE



July 23, 2014

This map is not intended to provide legal dimensions or locations of property ownership lines

FIGURE 1



WATER ASSOCIATES INC

P.O. BOX 80174
 PORTLAND, OR 97280
 (503) 319-8926

RECEIVED

AUG 15 2014

WATER RESOURCES DEPT
 SALEM, OREGON

RECEIVED

AUG 15 2014

WATER RESOURCES DEPT
SALEM, OREGON