

Place of Use Map

In the Name of Osmin Ranch
Township 3 South, Range 26 East,
Sections 2, 11, 12 and 14

RECEIVED

JUN 29 2015

WATER RESOURCES DEPT
SALEM, OREGON

LEGEND

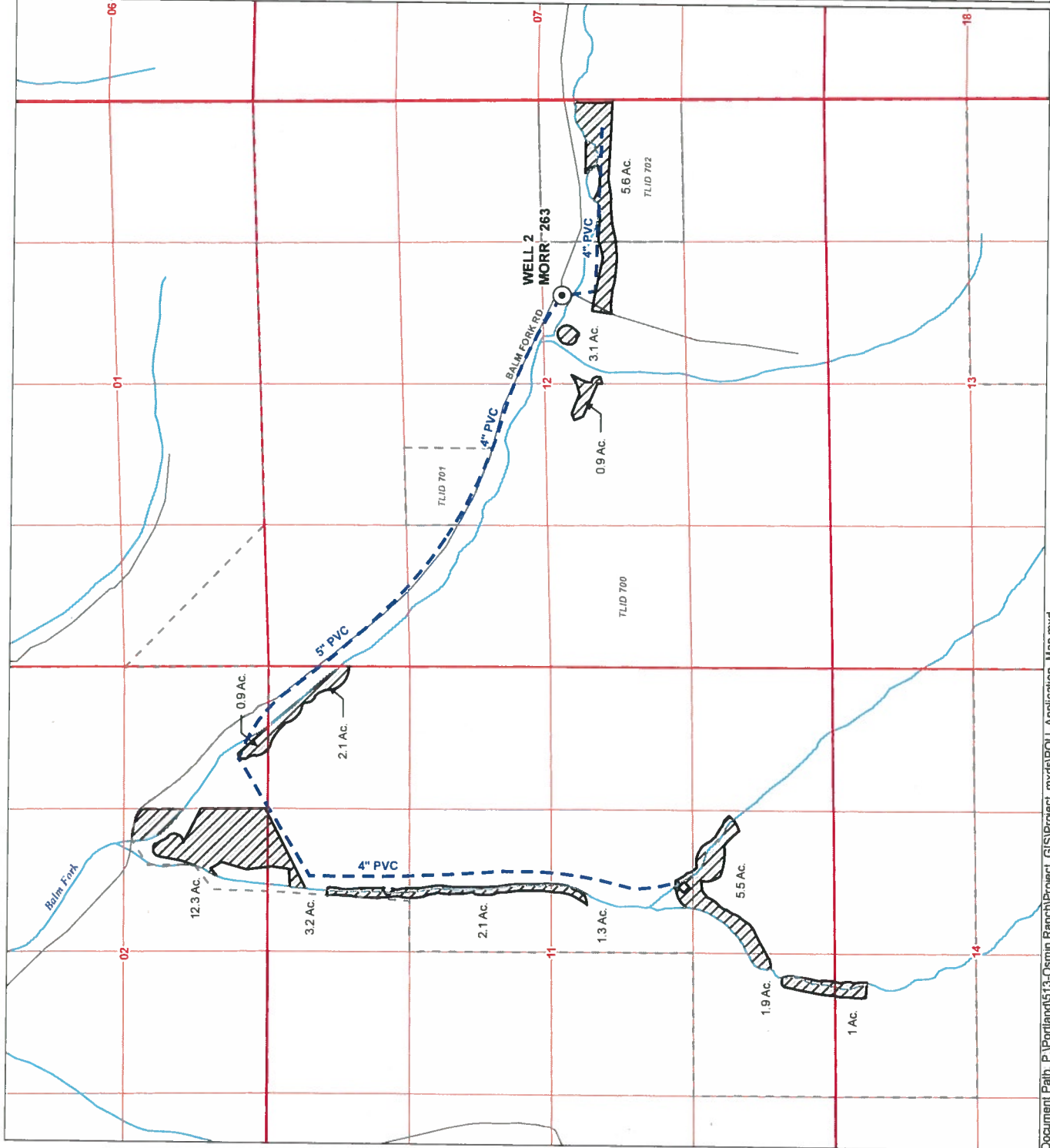
- Point of Appropriation (POA)
- Place of Use, 39.9 Ac.
- Pipeline, 11,815 ft
- Tax Lot
- Government Lot (GL)
- Street
- Watercourse

POA Location Description

Well 2 Located 2,740 feet South and 3,410 feet East from the Northwest corner of Section 12, Township 3, South, Range 26 East (W.M.)



MAP NOTES:
Date: June 29, 2015
Data Sources: OWRD, ESRI, USGS



Gr-17919



FIGURE 1

Osmin Ranch
Hephner, Oregon

LEGEND

- Mr. Osmin's Well
- City of Hephner Well
- Fault*, Bar and Ball on Downthrown Side

All Other Features

- Street
- Watercourse

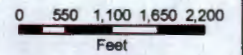
RECEIVED BY OWRD

SEP 04 2014

SALEM, OR

REFERENCE:

*Madin, I.P and Gietgey, R.P., 2007, Preliminary geologic map of the Umatilla Basin, Morrow and Umatilla Counties, Oregon: Oregon Department of Geology and Mineral Industries, Open-File Report O-07-15, scale 1:24,000.



MAP NOTES:

Date: August 5, 2014
Data Sources: OWRD, ESRI, USGS,
Air Photo taken by NAIP, 2006.



SEP 04 2014

2-17919-D

Observed Groundwater Elevation (2004 - 2014)

City of Heppner and Osmin Wells

SALEM, OR

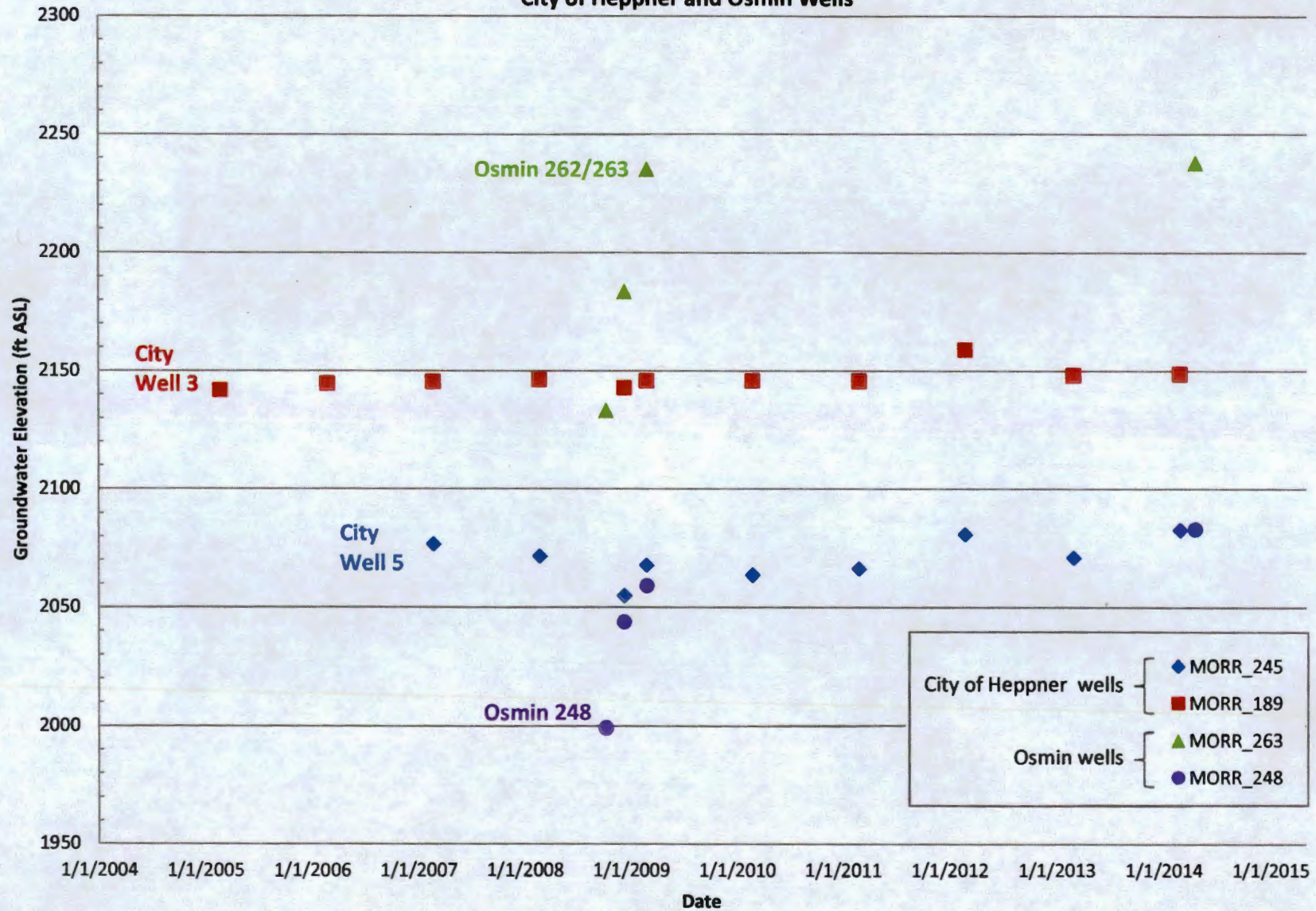


Figure 2
Groundwater Elevation

SUPERCEDED

0127-9

Place of Use Map

In the Name of Osmin Ranch
Township 3 South, Range 26 East,
Sections 2, 11, 12 and 14

RECEIVED BY OWRD

SEP 04 2014

SALEM, OR

LEGEND

- Point of Diversions (POD)
- Place of Use, 39.8 AC.
- Pipeline, 11,815 ft
- Tax Lot
- Government Lot (GL)
- Street
- Watercourse

POD Location Description
Well 2 Located 2,600 feet South and 3,300 feet East from the Northwest corner of Section 12, Township 3 South, Range 26 East (W.M.)



MAP NOTES:
Date: August 27, 2014
Data Source: OWRD, ESRI, USGS

