

THIS MAP WAS PREPARED FOR ASSESSMENT PURPOSE ONLY

SECTION 19 T5S R4W W.M. YAMHILL COUNTY

5 4 19

1" = 400'

SEE MAP 5 4 18

CANCELLED 2000 REF

RECEIVED

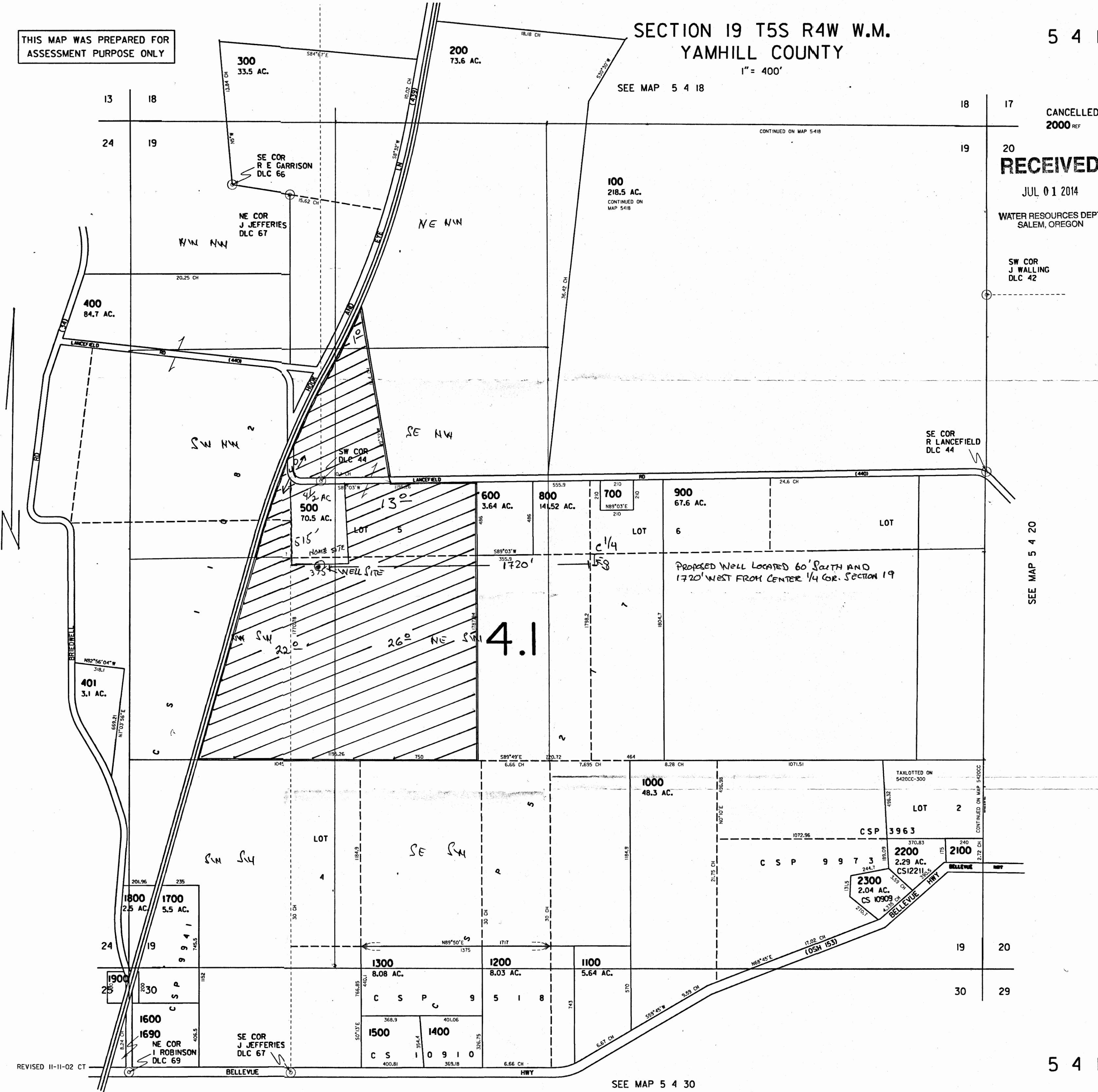
JUL 01 2014

WATER RESOURCES DEPT SALEM, OREGON

SW COR J WALLING DLC 42

SE COR R LANCEFIELD DLC 44

SEE MAP 5 4 20



REVISED 11-11-02 CT

SEE MAP 5 4 30

5 4 19